

Portronics POR-653

Portronics Timeout Smart Countdown Timer Cube (Model POR-653) Instruction Manual

1. INTRODUCTION

This manual provides comprehensive instructions for the setup, operation, and maintenance of your Portronics Timeout Smart Countdown Timer Cube. Please read this manual carefully to ensure proper use and to maximize the functionality of your device.

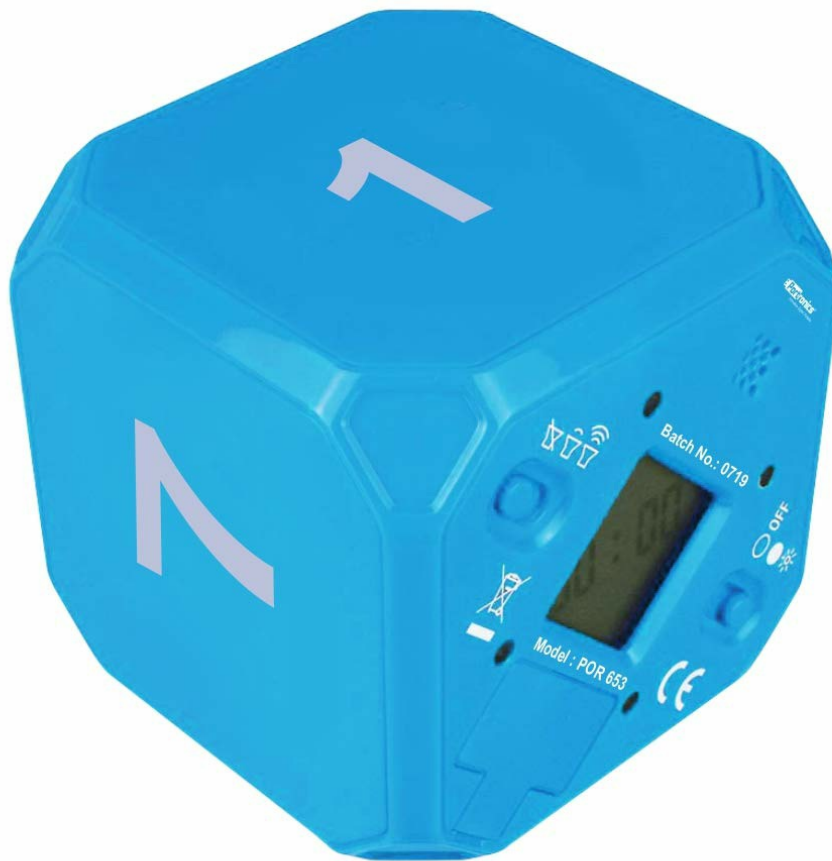


Figure 1: Portronics Timeout Smart Countdown Timer Cube. A blue, hexagonal timer cube with numbers '1' and '7' visible on two faces, and a small LCD display on another face showing '00:00'.

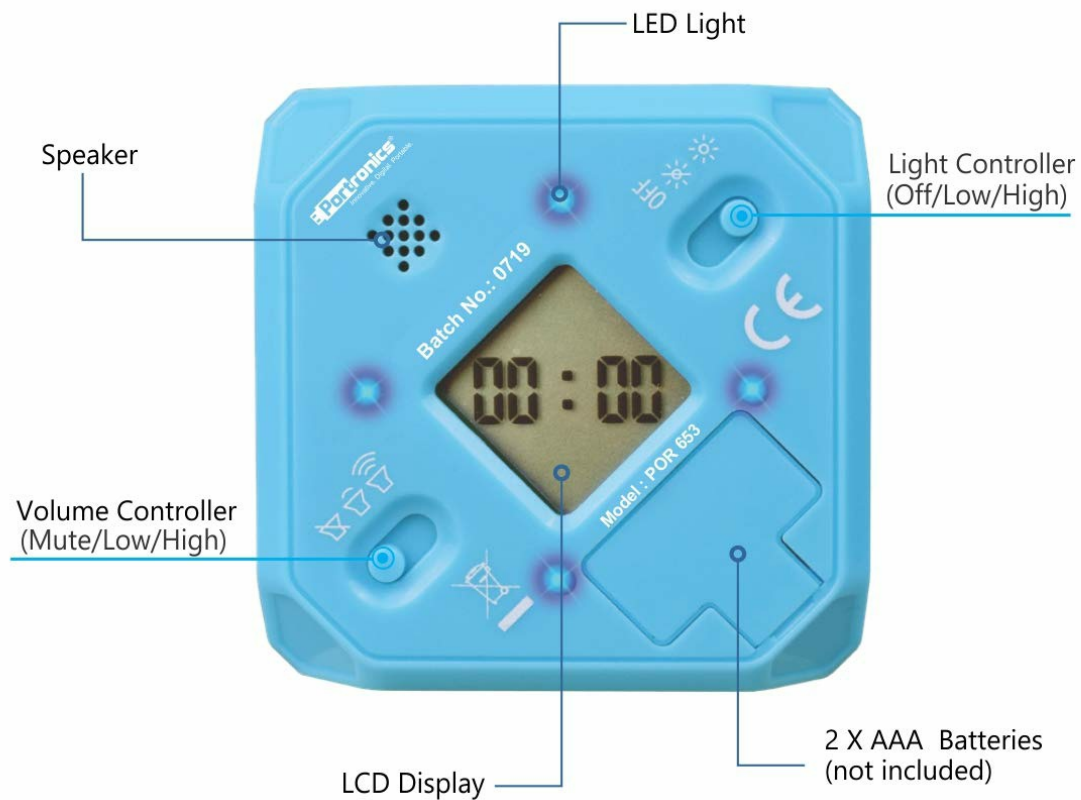
2. PRODUCT OVERVIEW

The Portronics Timeout is a smart countdown timer cube designed for efficient time management. It features a unique flip-to-start mechanism and offers both audio and visual alarm options. The timer is ideal for various activities including kitchen tasks, study sessions, games, workouts, meditation, and yoga.

Key Features:

- **Fixed Countdown Durations:** Offers four preset countdown times: 1, 3, 5, and 7 minutes.
- **Audio Alarm Options:** Three adjustable volume levels: High, Medium, and Mute.
- **Visual Alarm Options:** Inbuilt LED light with three settings: High, Medium, and Off.
- **Simple Operation:** No programming required; simply flip the desired minute side up to start the countdown.
- **Dynamic Display:** The LCD display automatically rotates to remain upright regardless of the cube's orientation.

Features & Functions



Four Fixed Time Duration Countdown

1 **3** **5** **7** minutes

Figure 2: Features and Functions. An annotated diagram of the timer cube's bottom face, highlighting the speaker, LED light, light controller (Off/Low/High), volume controller (Mute/Low/High), LCD display, and battery compartment for 2 AAA batteries. It also indicates the four fixed time durations: 1, 3, 5, 7 minutes.

3. PACKAGE CONTENTS

- 1 x Portronics Timeout Smart Countdown Timer Cube (Model POR-653)

4. SETUP

Battery Installation:

1. Locate the battery compartment cover on the bottom face of the timer cube.
2. Gently slide or unclip the cover to open the compartment.
3. Insert 2 x AAA batteries, ensuring correct polarity (+/-) as indicated inside the compartment.
4. Replace the battery compartment cover securely.

5. OPERATING INSTRUCTIONS

The Portronics Timeout timer cube is designed for intuitive operation without complex settings.

Starting a Countdown:

1. Ensure batteries are installed.
2. Identify the desired countdown duration (1, 3, 5, or 7 minutes) on one of the cube's faces.
3. Place the cube with the desired minute value facing upwards. The countdown will begin automatically.
4. The LCD display will show the remaining time.

Pausing and Resuming:

- To pause the timer, flip the cube so that a blank (non-numbered) side is facing upwards. The display will show 'PAUSE'.
- To resume the timer, flip the cube back to the numbered side that was previously counting down. The timer will continue from where it left off.

Stopping the Timer:

- When the countdown reaches zero, the alarm (audio and/or visual) will activate.
- To stop the alarm, flip the cube so that a blank (non-numbered) side is facing upwards.

Easy to Start, Pause & Stop Operations

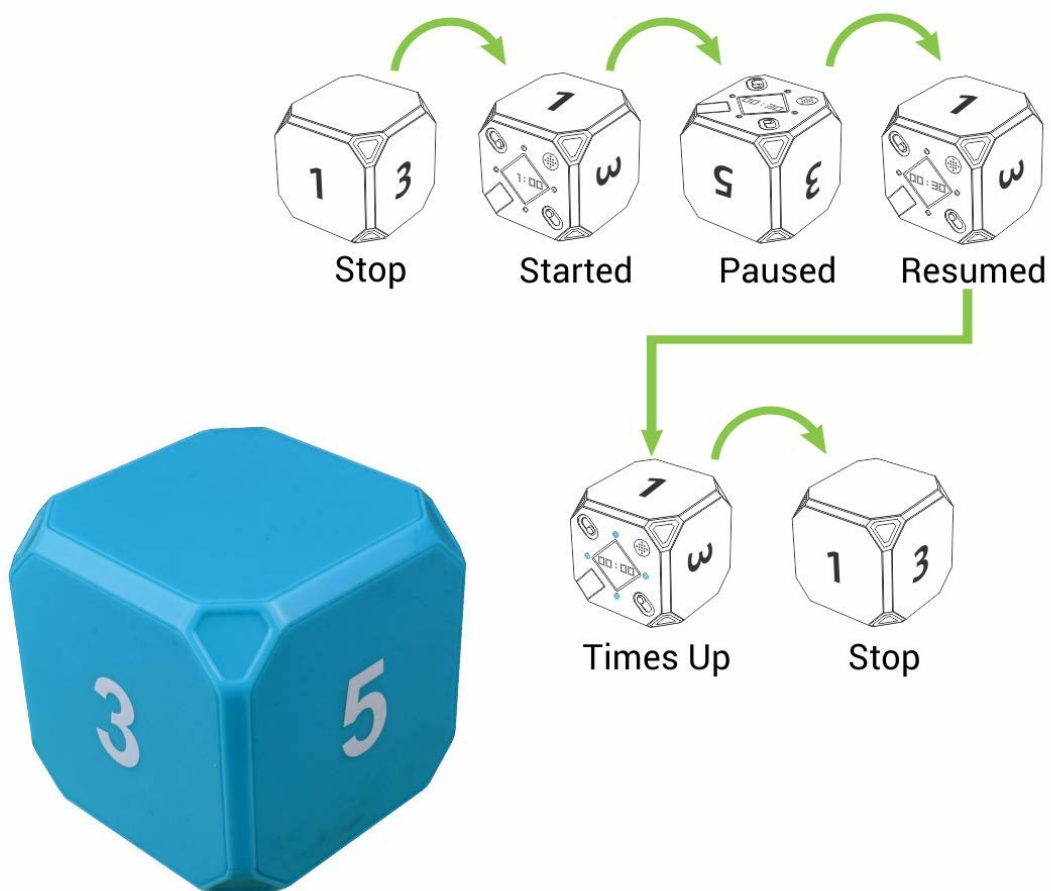


Figure 3: Easy Start, Pause, and Stop Operations. A sequence of illustrations demonstrating the timer's operation: placing a numbered side up to start, flipping to a blank side to pause, flipping back to resume, and the 'Times Up' notification followed by flipping to a blank side to stop the alarm.

Dynamic Display Feature:

The LCD display is designed to automatically adjust its orientation, ensuring that the time is always shown upright, regardless of how the cube is positioned.

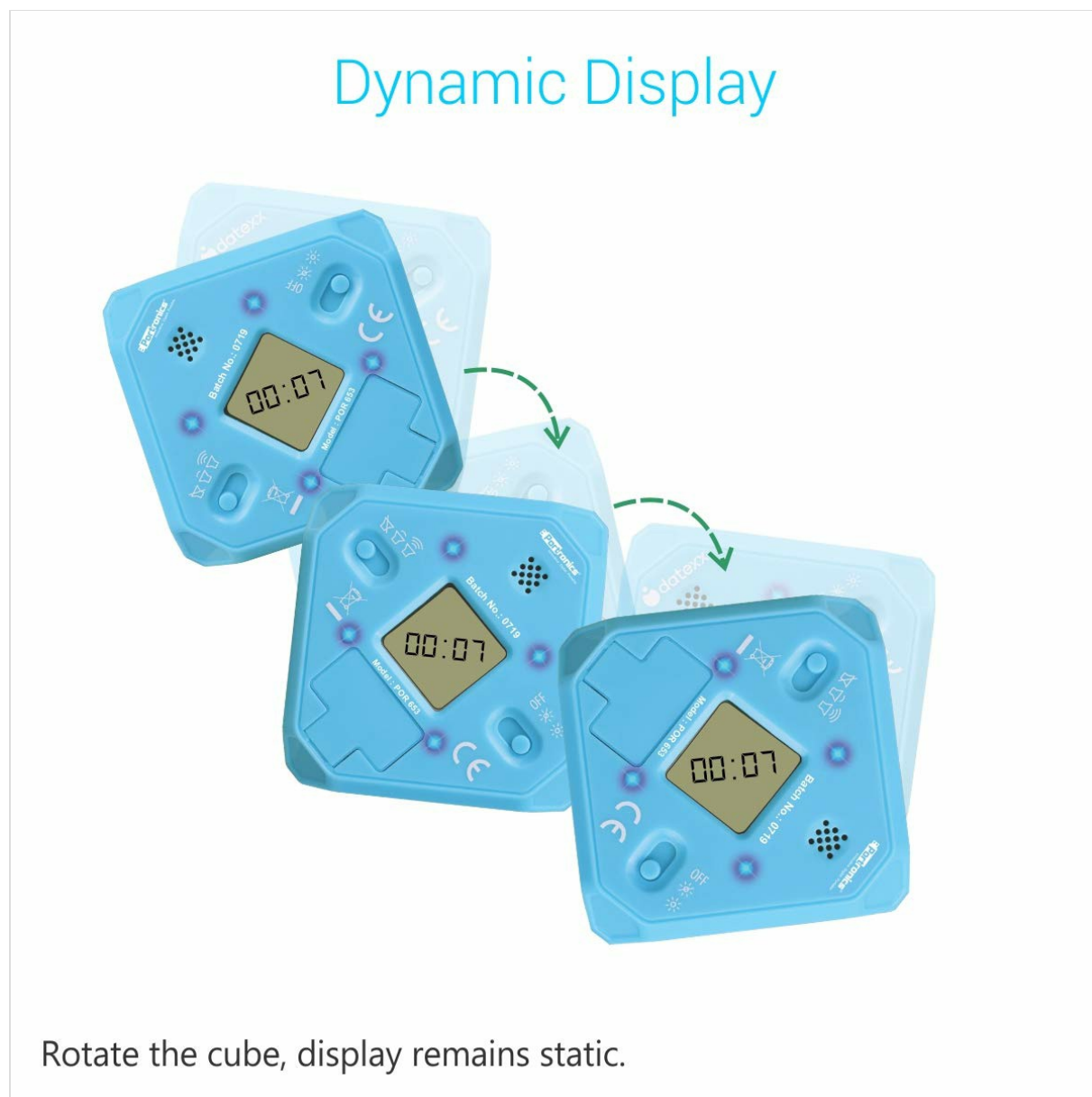


Figure 4: Dynamic Display. Three images of the timer cube rotated at different angles, all showing the LCD display remaining static and readable, indicating that the display adjusts to the cube's orientation.

6. ALARM SETTINGS

The Portronics Timeout offers customizable audio and visual alarm options to suit your environment and preferences.

Audio Alarm Control:

On the bottom face of the cube, locate the volume controller. You can select from three settings:

- **High:** Loudest audio alarm.

- **Medium:** Moderate audio alarm.
- **Mute:** No audio alarm.

Visual Alarm (LED Light) Control:

Also on the bottom face, locate the light controller. You can select from three settings for the inbuilt LED light:

- **High:** Brightest LED light.
- **Medium:** Moderate LED light.
- **Off:** No LED light.



- ✓ High Sound (low, medium or no light)
- ✓ Medium Sound (low, medium or no light)
- ✓ Mute (low light, high light)

Figure 5: Multiple Alarm Options. The timer cube on a desk next to a laptop, with text listing the multiple alarm options: High Sound (low, medium or no light), Medium Sound (low, medium or no light), and Mute (low light, high light).

7. MAINTENANCE

Cleaning:

- Wipe the timer cube with a soft, dry cloth.
- Do not use abrasive cleaners or solvents, as these may damage the surface.

Battery Replacement:

- Replace batteries when the display becomes dim or the timer functions inconsistently.
- Always use fresh AAA batteries.
- Dispose of old batteries responsibly according to local regulations.

Storage:

- Store the timer in a cool, dry place away from direct sunlight and extreme temperatures.
- If storing for an extended period, remove the batteries to prevent leakage.

8. TROUBLESHOOTING

Problem	Possible Cause	Solution
Timer does not start.	Batteries are low or incorrectly installed.	Check battery polarity or replace with new AAA batteries.
No audio alarm.	Audio alarm is set to 'Mute'.	Adjust the volume controller to 'Low' or 'High'.
No visual alarm (LED light).	LED light is set to 'Off'.	Adjust the light controller to 'Low' or 'High'.
Display is dim or flickering.	Low battery power.	Replace batteries with new AAA batteries.
Timer stops unexpectedly.	Cube was accidentally flipped to a blank side (pause).	Ensure the numbered side remains facing upwards during countdown.

9. SPECIFICATIONS

Feature	Detail
Brand	Portronics
Model Number	POR-653
Colour	Blue
Material	ABS Plastic
Product Dimensions	6D x 6W x 6H Centimeters
Item Weight	47 Grams
Number of Settings (Durations)	4 (1, 3, 5, 7 minutes)
Power Source	2 x AAA Batteries (not included)

Compact & Light Weight



Figure 6: Compact and Lightweight Design. A hand holding the timer cube, illustrating its compact size (6cm x 6cm x 6cm) and light weight (47 grams).

10. WARRANTY AND SUPPORT

Warranty Information:

The Portronics Timeout Smart Countdown Timer Cube comes with a 1-year limited warranty from the date of purchase. This warranty covers manufacturing defects and workmanship under normal use. It does not cover damage caused by misuse, accidents, unauthorized modifications, or normal wear and tear.

Customer Support:

For technical assistance, warranty claims, or any product-related inquiries, please contact Portronics customer support. Refer to the official Portronics website or your purchase documentation for the most current contact information.








Figure 7: Versatile Usage. A collage depicting the timer cube being used in different environments: an office setting, a kitchen while cooking, during a workout, and during meditation, highlighting its versatility.

Related Documents - POR-653



[Portronics Dash POR-1360: TWS Portable Speaker with Karaoke Mic User Manual](#)

Comprehensive user manual for the Portronics Dash POR-1360 TWS portable speaker with karaoke microphone. Details features, specifications, remote control functions, operational diagrams, and FCC compliance.

	<p>Portronics Adapte 62 POR-1062 USB Wall Adapter User Manual</p> <p>User manual for the Portronics Adapte 62 POR-1062, a 2.4A fast-charging single USB wall adapter. Features intelligent protection, wide compatibility, and portable design for iOS and Android devices.</p>
	<p>Portronics POR-1360 Dash TWS Portable Speaker with Karaoke Mic User Manual</p> <p>User manual for the Portronics POR-1360 Dash TWS portable speaker, detailing its features, specifications, operation, and connectivity options for enhanced audio experience with a karaoke microphone.</p>
	<p>Portronics LUXCELL B 20K 20000mAh Power Bank User Manual</p> <p>User manual for the Portronics LUXCELL B 20K 20000mAh Power Bank. Learn about package contents, charging your devices, charging the power bank, LED indicators, and technical specifications.</p>
	<p>Portronics AUTO 10 Smart Audio Connector & 3.4A Car Charger User Manual</p> <p>User manual for the Portronics AUTO 10, a smart audio connector and 3.4A car charger featuring Bluetooth FM transmission, hands-free calling, USB charging, and music playback from various sources.</p>
	<p>Portronics Harmonics Z11 Wireless Stereo Headset: User Manual & Specifications</p> <p>Comprehensive user manual for the Portronics Harmonics Z11 Wireless Stereo Headset. Learn about package contents, product features, Bluetooth connectivity, charging, specifications, and important cautions.</p>