

[Manuals.plus](#) /

› [EasyGold](#) /

› EasyGold Professional 5-Piece Hair Styling Comb Set Instruction Manual

EasyGold YJS00060

EasyGold Professional 5-Piece Hair Styling Comb Set Instruction Manual

Model: YJS00060

1. INTRODUCTION

This manual provides comprehensive instructions for the proper use and care of your EasyGold Professional 5-Piece Hair Styling Comb Set. Please read this manual thoroughly before using the combs to ensure optimal results and product longevity. This set is designed for various hair styling needs for men and boys.

2. PRODUCT OVERVIEW

The EasyGold 5-Piece Hair Styling Comb Set includes five distinct combs, each crafted from durable PP plastic, designed to assist in creating a variety of hairstyles. The smooth finish ensures comfortable handling and prevents scalp irritation.



Image 2.1: The complete EastyGold 5-piece hair styling comb set, showcasing all five unique comb designs.

Comb Types and Their Uses:

- **Double-sided Small Comb:** Ideal for creating precise side part lines for styles such as the oil head, back head, and aircraft head.
- **Short Handle Wide Tooth Comb:** Suitable for building volume and shaping styles like the side oil head, back head, aircraft head, and Mohawk.
- **Afro Pick Up Hair Comb:** Designed for creating simple, clean gradients, side-split oil heads, and side-cut split line oil head back styles.
- **Long Handle Wide Tooth Comb:** Excellent for crafting side oil heads, side-cut line oil heads, back heads, aircraft heads, and Mohawk styles.
- **Curved Hair Comb:** Perfect for achieving fluffy oil heads, Pompadour oil heads, big back heads, and short hair oil head styles.

The Details

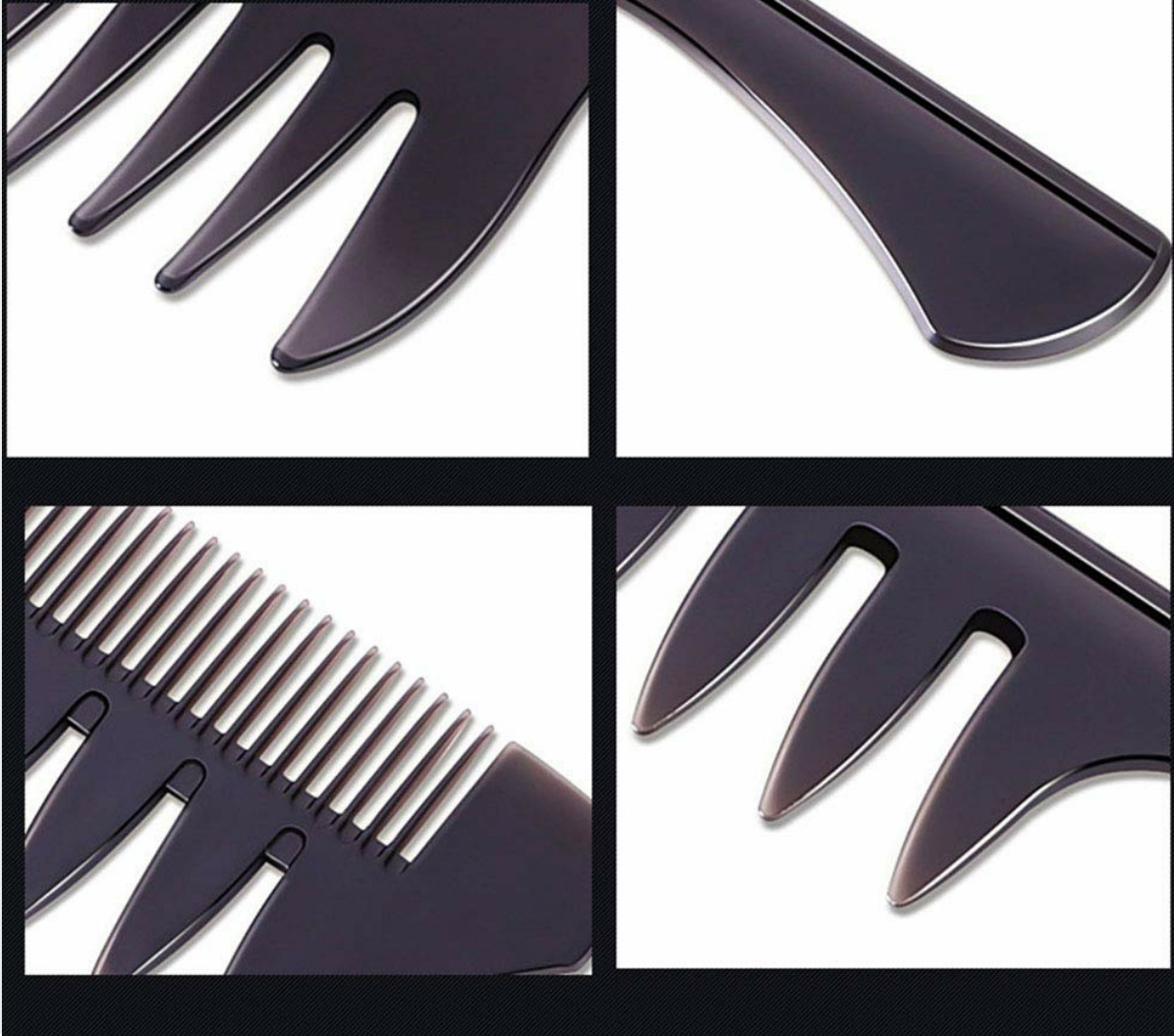


Image 2.2: Detailed view of the comb teeth and handle designs, highlighting the smooth finish and sturdy construction.

3. SETUP

The EastyGold Hair Styling Comb Set requires no assembly. Simply remove the combs from their packaging. It is recommended to wash the combs with mild soap and water before first use to ensure hygiene.

4. OPERATING INSTRUCTIONS

Select the appropriate comb based on your desired hairstyle and hair type. The combs are designed for use on dry or damp hair, with or without styling products.

1. **Preparation:** Ensure hair is clean and detangled. Apply any desired styling products (e.g., pomade, gel, mousse) evenly through the hair.
2. **Comb Selection:** Refer to the "Product Overview" section to choose the comb best suited for your intended style.
3. **Styling:**
 - For creating defined lines or parts, use the **Double-sided Small Comb** or **Long Handle Wide Tooth Comb**.
 - For adding volume or shaping, utilize the **Short Handle Wide Tooth Comb** or **Curved Hair Comb**.

- For lifting and shaping textured hair or creating gradients, the **Afro Pick Up Hair Comb** is effective.

4. **Finishing:** Once the desired style is achieved, use hairspray or other finishing products to hold the style in place, if necessary.



Image 4.1: Visual guide demonstrating the application of different comb types for various hair textures and styles.

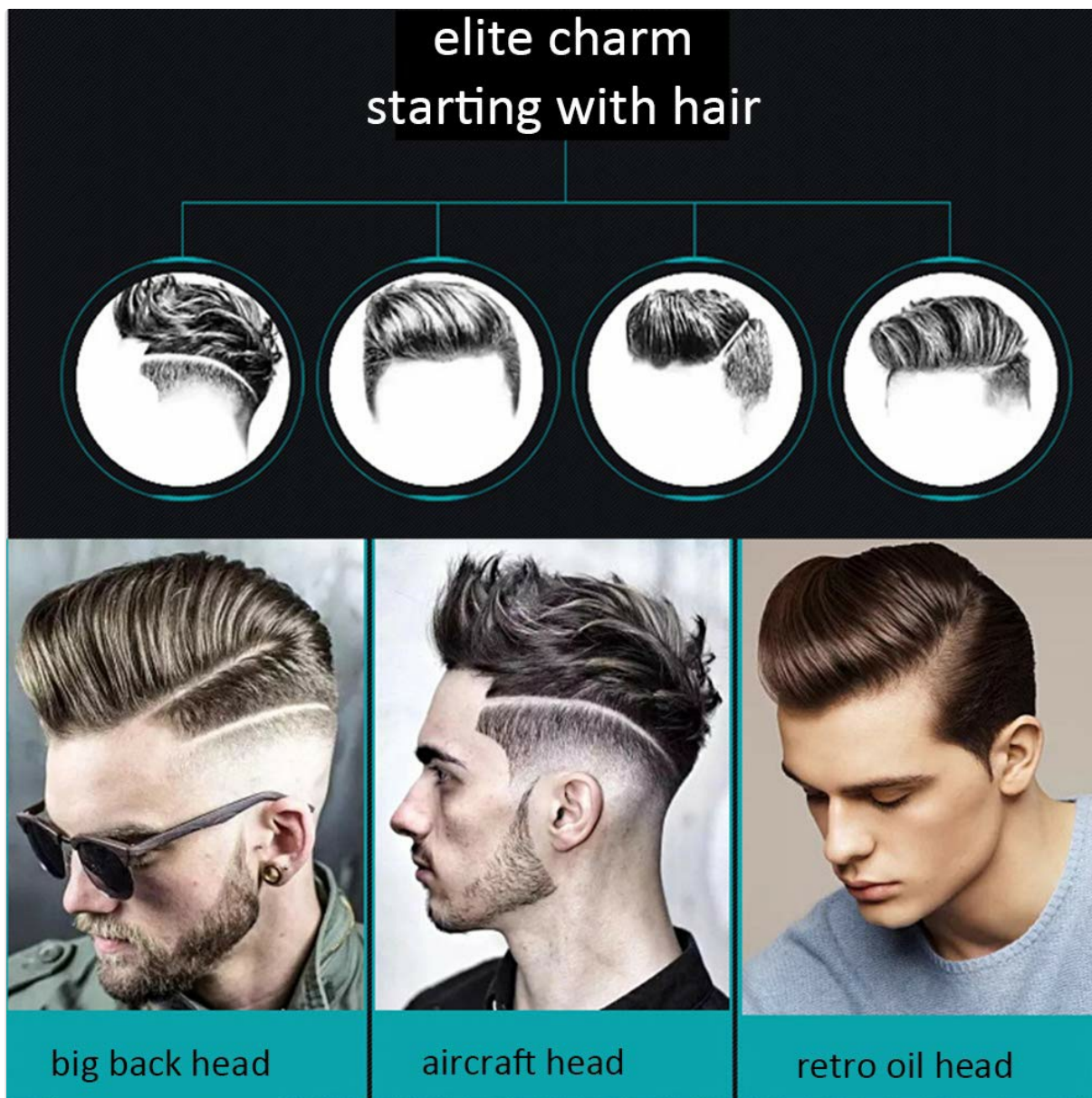


Image 4.2: Examples of popular men's hairstyles that can be achieved with the comb set, including big back head, aircraft head, and retro oil head.

5. MAINTENANCE

Regular cleaning of your combs will ensure hygiene and extend their lifespan.

- After each use, remove any trapped hair from the comb teeth.
- Wash the combs with warm water and a mild soap or shampoo.
- Rinse thoroughly to remove all soap residue.
- Allow the combs to air dry completely before storing.
- Store combs in a clean, dry place to prevent damage.

6. TROUBLESHOOTING

Problem	Possible Cause	Solution
---------	----------------	----------

Problem	Possible Cause	Solution
Comb teeth feel rough or snag hair.	Accumulation of hair product residue or dirt.	Clean the comb thoroughly as described in the Maintenance section. Ensure all residue is removed.
Comb breaks easily.	Excessive force during use or improper storage.	Avoid applying excessive pressure when combing. Store combs in a protective manner to prevent bending or snapping. While made from durable plastic, extreme force can cause breakage.
Difficulty achieving desired style.	Incorrect comb selection or technique.	Review the "Product Overview" and "Operating Instructions" sections to ensure the correct comb is being used for the specific style. Experiment with different techniques and styling products.

7. SPECIFICATIONS

Model Number	YJS00060
Material	PP Plastic
Number of Items	5
Power Source	Manual
Package Dimensions	7.64 x 2.87 x 2.09 inches
Item Weight	3.17 ounces



Image 7.1: Diagram illustrating the dimensions of each comb within the set.

8. WARRANTY AND SUPPORT

This product is designed for durability and performance. For any questions regarding product use, maintenance, or potential issues, please refer to the contact information provided by your retailer or the manufacturer, EastyGold. Specific warranty details may vary by region and retailer.