

Philips Audio HTL3325/10

Philips HTL3325/10 Soundbar System User Manual

1. INTRODUCTION

This user manual provides essential information for the safe and efficient operation of your Philips HTL3325/10 Soundbar System. Please read these instructions carefully before using the product and retain them for future reference. This system includes a soundbar and a wireless subwoofer, offering 3.1 channel audio with Bluetooth, Dolby Audio, HDMI ARC, and USB connectivity.

2. SAFETY INFORMATION

Important Safety Instructions:

- Read these instructions.
- Keep these instructions.
- Heed all warnings.
- Follow all instructions.
- Do not use this apparatus near water.
- Clean only with a dry cloth.
- Do not block any ventilation openings. Install in accordance with the manufacturer's instructions.
- Do not install near any heat sources such as radiators, heat registers, stoves, or other apparatus (including amplifiers) that produce heat.
- Protect the power cord from being walked on or pinched, particularly at plugs, convenience receptacles, and the point where they exit from the apparatus.
- Only use attachments/accessories specified by the manufacturer.
- Unplug this apparatus during lightning storms or when unused for long periods of time.
- Refer all servicing to qualified service personnel. Servicing is required when the apparatus has been damaged in any way, such as power-supply cord or plug is damaged, liquid has been spilled or objects have fallen into the apparatus, the apparatus has been exposed to rain or moisture, does not operate

normally, or has been dropped.

3. PACKAGE CONTENTS

Verify that all components are present in the package:

- Philips HTL3325/10 Soundbar
- Wireless Subwoofer
- Remote Control
- Battery for Remote Control
- Power Cord
- Quick Start Guide
- Global Warranty Certificate

4. PRODUCT OVERVIEW

4.1 Soundbar and Subwoofer

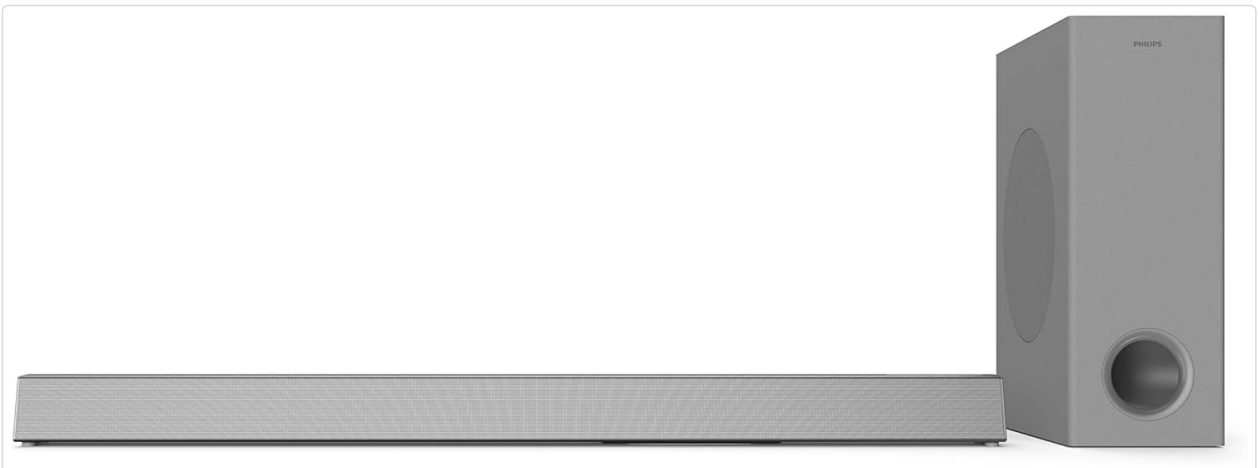


Figure 1: Front view of the Philips HTL3325/10 Soundbar and its accompanying wireless subwoofer.

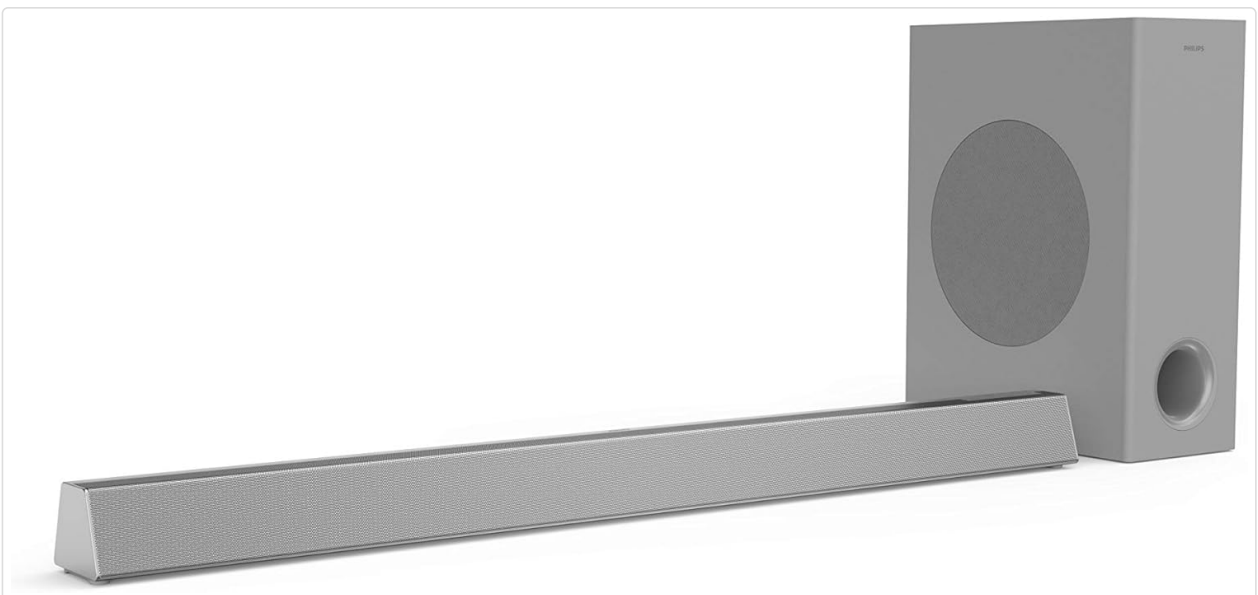


Figure 2: Angled view of the Philips HTL3325/10 Soundbar and wireless subwoofer, showcasing their design.

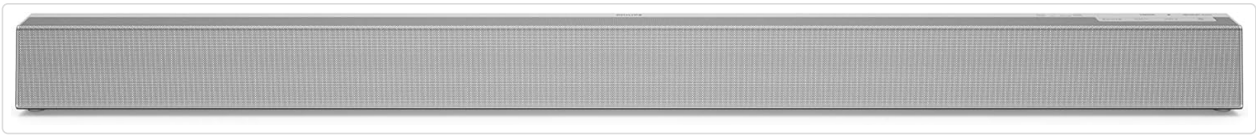


Figure 3: Detailed front view of the Philips HTL3325/10 Soundbar.



Figure 4: The wireless subwoofer component of the Philips HTL3325/10 system.

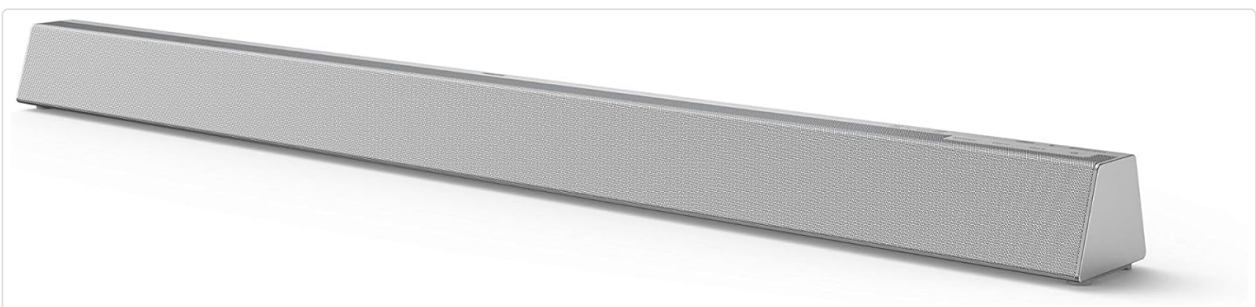


Figure 5: Angled view of the Philips HTL3325/10 Soundbar, highlighting its profile.

4.2 Top Panel Controls

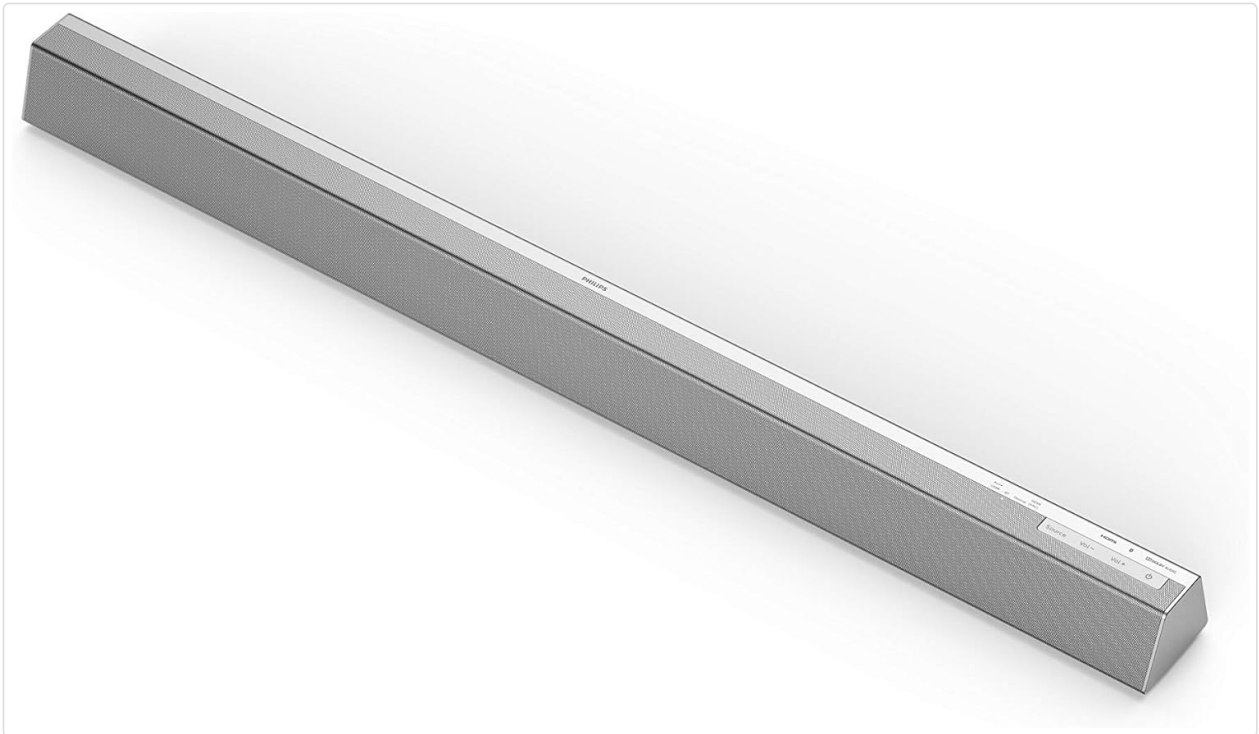


Figure 6: Close-up of the top panel controls on the Philips HTL3325/10 Soundbar, including power, volume, and input selection buttons.

The top panel of the soundbar features essential controls for power, volume adjustment, and input source selection. Refer to the quick start guide for detailed button functions.

5. SETUP

5.1 Placement

- **Soundbar:** Place the soundbar on a stable, flat surface directly in front of your TV, or mount it on the wall below your TV. Ensure there are no obstructions in front of the soundbar for optimal sound dispersion.
- **Wireless Subwoofer:** Position the wireless subwoofer on the floor, preferably in a corner or near a wall, to enhance bass response. Ensure it is within range of the soundbar for wireless connection.

5.2 Connections

Connect the soundbar to your TV and other devices using the appropriate cables.

- **HDMI ARC (Recommended):** Connect an HDMI cable from the HDMI ARC port on your soundbar to the HDMI ARC port on your TV. This allows audio from your TV to be sent to the soundbar and enables control of the soundbar volume with your TV remote.
- **Optical:** If your TV does not have an HDMI ARC port, connect an optical cable from the OPTICAL IN port on your soundbar to the optical output on your TV.
- **USB:** For playing audio from a USB storage device, insert the device into the USB port on the soundbar.
- **Power:** Connect the power cords to the soundbar and subwoofer, then plug them into a wall outlet.

5.3 Wireless Subwoofer Pairing

The wireless subwoofer should automatically pair with the soundbar when both are powered on. If the subwoofer does not connect, follow these steps:

1. Ensure both the soundbar and subwoofer are powered on.
2. Press the 'Pair' button on the back of the subwoofer (if available, refer to the quick start guide for exact location).
3. The indicator light on the subwoofer should flash, indicating pairing mode.
4. The subwoofer will automatically connect to the soundbar. The indicator light will turn solid when connected.

6. OPERATING

6.1 Power On/Off

Press the **Power** button on the soundbar's top panel or on the remote control to turn the system on or off.

6.2 Input Selection

Press the **Source** or **Input** button on the remote control or soundbar to cycle through available input sources: HDMI ARC, Optical, Bluetooth, USB.

6.3 Volume Control

Use the **Volume +** and **Volume -** buttons on the remote control or soundbar to adjust the volume level. If connected via HDMI ARC, your TV remote may also control the soundbar's volume.

6.4 Bluetooth Pairing

To connect a Bluetooth device:

1. Press the **Bluetooth** button on the remote control or soundbar to select Bluetooth input. The soundbar will enter pairing mode, indicated by a flashing LED.
2. On your mobile device, enable Bluetooth and search for available devices.
3. Select "Philips HTL3325/10" from the list of devices.
4. Once connected, the LED on the soundbar will stop flashing and remain solid. You can now play audio from your device through the soundbar.

7. MAINTENANCE

To ensure the longevity and optimal performance of your soundbar system, follow these maintenance guidelines:

- **Cleaning:** Use a soft, dry cloth to clean the surfaces of the soundbar and subwoofer. Do not use liquid cleaners, abrasive cleaners, or sprays, as these can damage the finish or internal components.
- **Ventilation:** Ensure that the ventilation openings on the soundbar and subwoofer are not blocked. Proper airflow prevents overheating.
- **Storage:** If storing the unit for an extended period, disconnect it from the power outlet and store it in a cool, dry place.

8. TROUBLESHOOTING

If you encounter issues with your Philips HTL3325/10 Soundbar System, refer to the following common problems and solutions:

- **No Power:**

- Ensure the power cords are securely connected to the soundbar, subwoofer, and a working power outlet.
- Check if the power outlet is functional by plugging in another device.

- **No Sound:**

- Verify that the correct input source is selected on the soundbar (e.g., HDMI ARC, Optical, Bluetooth).
- Increase the volume on both the soundbar and your connected device (TV, smartphone).
- Check all audio cables for secure connections.
- If using HDMI ARC, ensure your TV's HDMI ARC feature is enabled in its settings.

- **Subwoofer Not Connecting:**

- Ensure both the soundbar and subwoofer are powered on.
- Try manually re-pairing the subwoofer as described in Section 5.3.
- Ensure the subwoofer is within close proximity to the soundbar and there are no major obstructions.



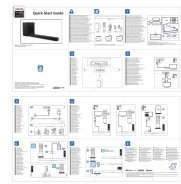


- **Bluetooth Pairing Issues:**

- Ensure the soundbar is in Bluetooth pairing mode (flashing LED).
- Make sure your mobile device's Bluetooth is enabled and it is searching for devices.
- Move your mobile device closer to the soundbar.
- If previously paired, try unpairing and re-pairing the device.

If the problem persists after trying these solutions, contact customer support for further assistance.

9. SPECIFICATIONS

Feature	Specification
Brand	Philips Audio
Model Name	HTL3325/10
Item Model Number	HTL3325/10
Surround Sound Channel Configuration	3.1
Power Output	300 Watts
Max Speaker Output Power	300 Watts
Connectivity Technology	Bluetooth, HDMI, USB
Wireless Communication Technology	Bluetooth
Connections	HDMI, Bluetooth, USB
Special Features	Bluetooth, Dolby Audio
Audio Output Mode	Surround
Speaker Type	Subwoofer

	<p>Philips Audio Moving Sound: 80s Retro Portable Audio Returns with Modern Tech</p> <p>Philips Audio announces the return of its iconic Moving Sound range, blending 80s retro design with modern features like Bluetooth 5.5, Auracast, and Spatial Audio. Featuring new models: The Tube, The Roller, The Buds, and The Bingo.</p>
	<p>Philips Soundbar 2.1 TAB6309: Immersive Audio and Sleek Design</p> <p>Experience room-filling audio with the Philips Soundbar 2.1 (TAB6309/10). Featuring Dolby Atmos, DTS Virtual:X, 320W power, Bluetooth 5.3, and HDMI ARC for enhanced home entertainment.</p>
	<p>Philips TAB7305 Soundbar Quick Start Guide</p> <p>Concise guide to setting up and using the Philips TAB7305 Soundbar, covering connections, remote control, sound modes, and Bluetooth pairing.</p>
	<p>Philips Soundbar 8000 Series TAB8805 User Manual</p> <p>Comprehensive user manual for the Philips Soundbar 8000 Series TAB8805, covering setup, connections, features, troubleshooting, and product specifications. Learn how to connect, operate, and maintain your soundbar for an optimal audio experience.</p>
	<p>Philips TAB5706/37 Soundbar 2.1: Powerful TV Audio with Built-in Subwoofer</p> <p>Enhance your home entertainment with the Philips TAB5706/37 Soundbar 2.1. Featuring 200W max power, a built-in subwoofer for deep bass, Dolby Digital Plus for immersive sound, and HDMI ARC for simplified control. Enjoy easy connectivity via Bluetooth, Optical, and USB, all within a distinctive geometric design.</p>