

FTUBET Q1-8FT-YT-V4CC-20

FTUBET 8FT LED Shop Light Fixture User Manual

Model: Q1-8FT-YT-V4CC-20

1. INTRODUCTION

Thank you for choosing the FTUBET 8FT LED Shop Light Fixture. This manual provides essential information for the safe and efficient installation, operation, and maintenance of your new lighting system. Please read this manual thoroughly before installation and keep it for future reference.

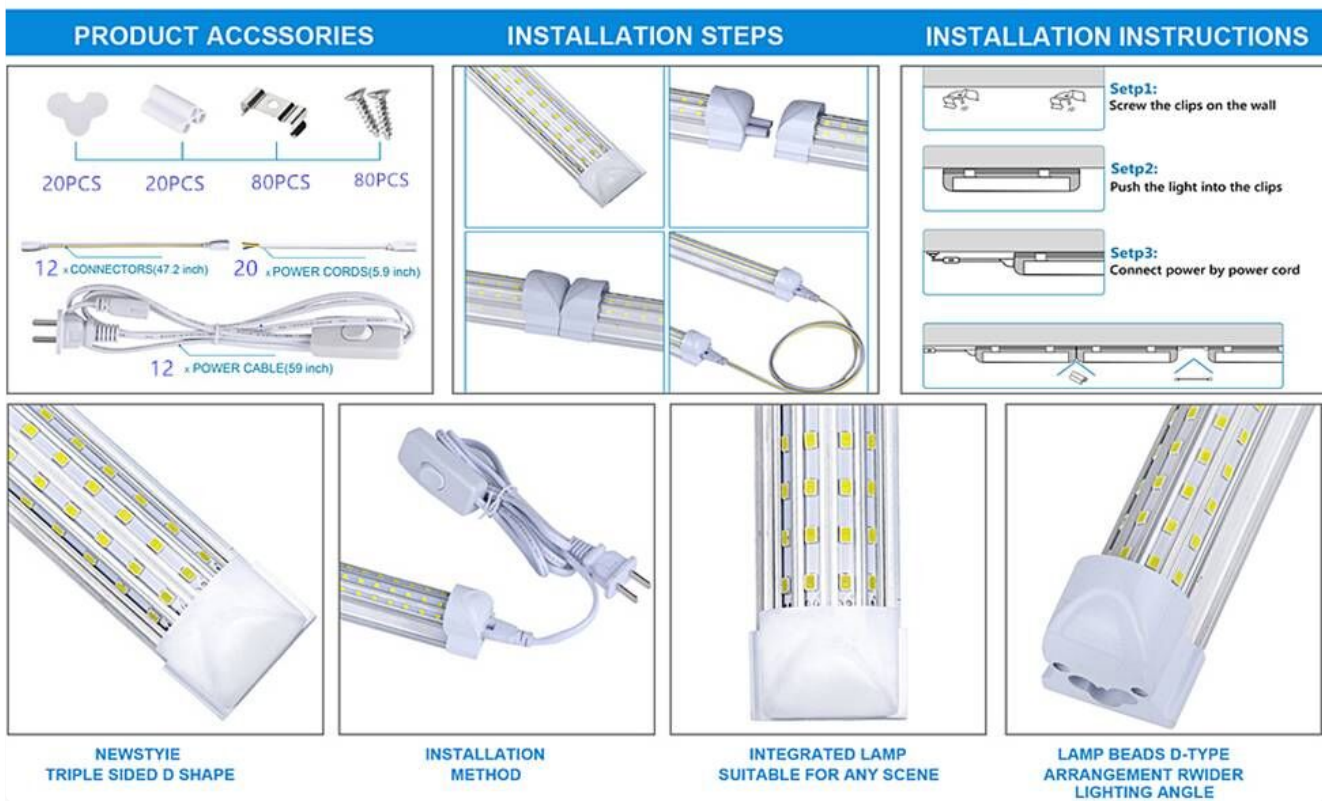
2. SAFETY INFORMATION

Always follow basic safety precautions when installing and operating electrical products to reduce the risk of fire, electric shock, and personal injury.

- **Disconnect Power:** Always disconnect power at the circuit breaker or fuse box before installation, maintenance, or servicing.
- **Qualified Electrician:** Installation should be performed by a qualified electrician or a person with adequate knowledge of electrical systems.
- **Indoor Use Only:** This product is designed for indoor use only. Do not expose to water or moisture.
- **Voltage Compatibility:** Ensure the power supply voltage (110V) matches the fixture's requirements.
- **Secure Mounting:** Mount fixtures securely to prevent them from falling.
- **Not Dimmable:** This fixture is not dimmable. Do not attempt to connect it to a dimmer switch.
- **Avoid Direct Eye Exposure:** Do not stare directly into the LED light source when illuminated, as it can cause eye strain.

3. PACKAGE CONTENTS

Verify that all components are present and undamaged before beginning installation. If any parts are missing or damaged, contact customer support.



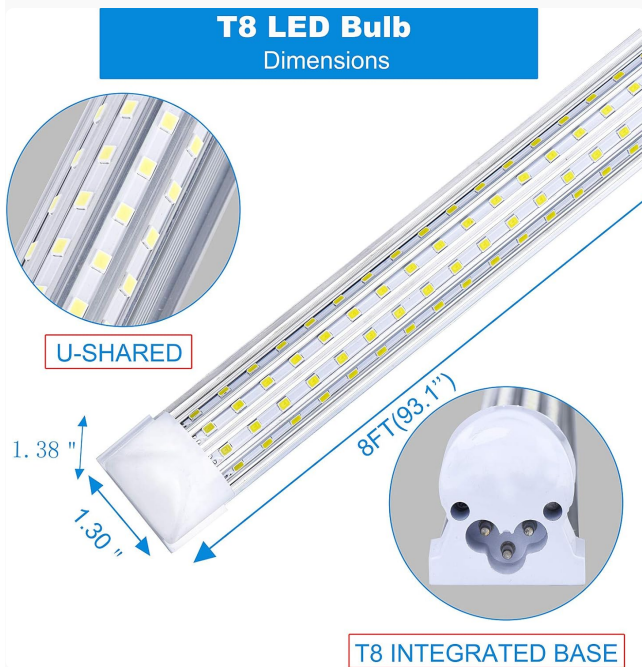
This image illustrates the complete set of accessories provided with your FTUBET LED Shop Light Fixture. It includes the main light tubes, mounting hardware, and various cables for power and linking.

- 20 x 8FT LED Shop Light Fixtures
- 40 x Mounting Clips (2 per fixture)
- 80 x Mounting Screws
- 80 x Wall Anchors
- 20 x Power Cords with On/Off Switch (59 inches each)
- 12 x Linkable Connectors (47.2 inches each)
- 12 x Power Cables (59 inches each, for direct power without switch)

4. SPECIFICATIONS

Feature	Specification
Model Number	Q1-8FT-YT-V4CC-20
Light Type	LED Shop Light Fixture
Length	8 Feet (93.1 inches)
Shape	U-Shaped T8 Tube
Wattage	144 Watts
Luminous Flux	15500 Lumens
Color Temperature	6000K Cool White
Voltage	110 Volts

Lifespan	Up to 50,000 Hours
Material	Aluminum (Al)
Indoor/Outdoor Usage	Indoor Use Only
Dimmable	No

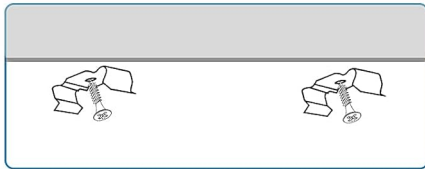


This diagram provides detailed dimensions of the T8 LED bulb, including its 8-foot length and U-shaped profile, essential for planning installation space.

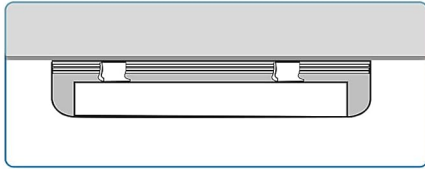
5. INSTALLATION

Follow these steps carefully for proper installation. Ensure power is disconnected before starting.

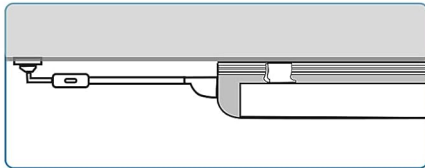
INSTALLATION INSTRUCTIONS



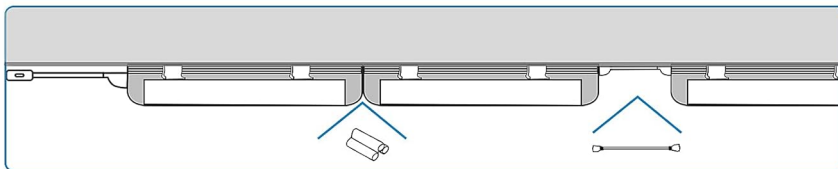
Step 1:
Screw the clips on the wall



Step 2:
Push the light into the clips



Step 3:
Connect power by power cord



This image illustrates the three primary steps for installing the LED shop light: securing the mounting clips, attaching the light fixture, and connecting the power source.

1. Step 1: Mark and Screw the Clips

Determine the desired location for your light fixture. Use the provided mounting clips as a template to mark the screw positions on the wall or ceiling. Drill pilot holes if necessary, then secure the clips using the provided screws and wall anchors. Ensure clips are spaced appropriately for the 8FT fixture.

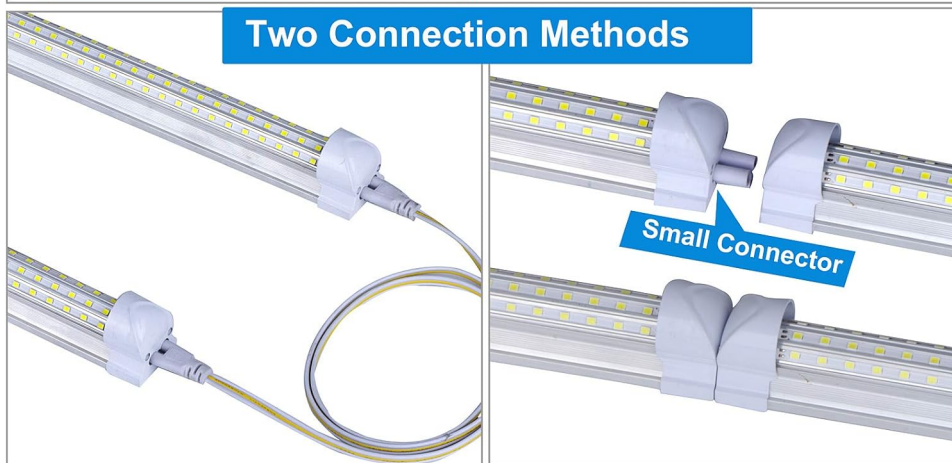
2. Step 2: Push the Light into the Clips

Carefully align the LED shop light fixture with the installed mounting clips. Gently push the fixture into the clips until it snaps securely into place. Ensure both ends of the fixture are firmly seated.

3. Step 3: Connect Power

Choose your preferred connection method:

- **Individual Power:** Connect one end of the provided 59-inch power cord with the on/off switch to the fixture. Plug the other end into a standard 110V AC outlet.
- **Linkable Connection (Daisy Chain):** For connecting multiple fixtures, use the provided 47.2-inch linkable connectors or the 59-inch power cables. Connect one end of a connector/cable to the output end of the first fixture and the other end to the input end of the next fixture. *Note: A maximum of 4 lights can be safely connected in series.*

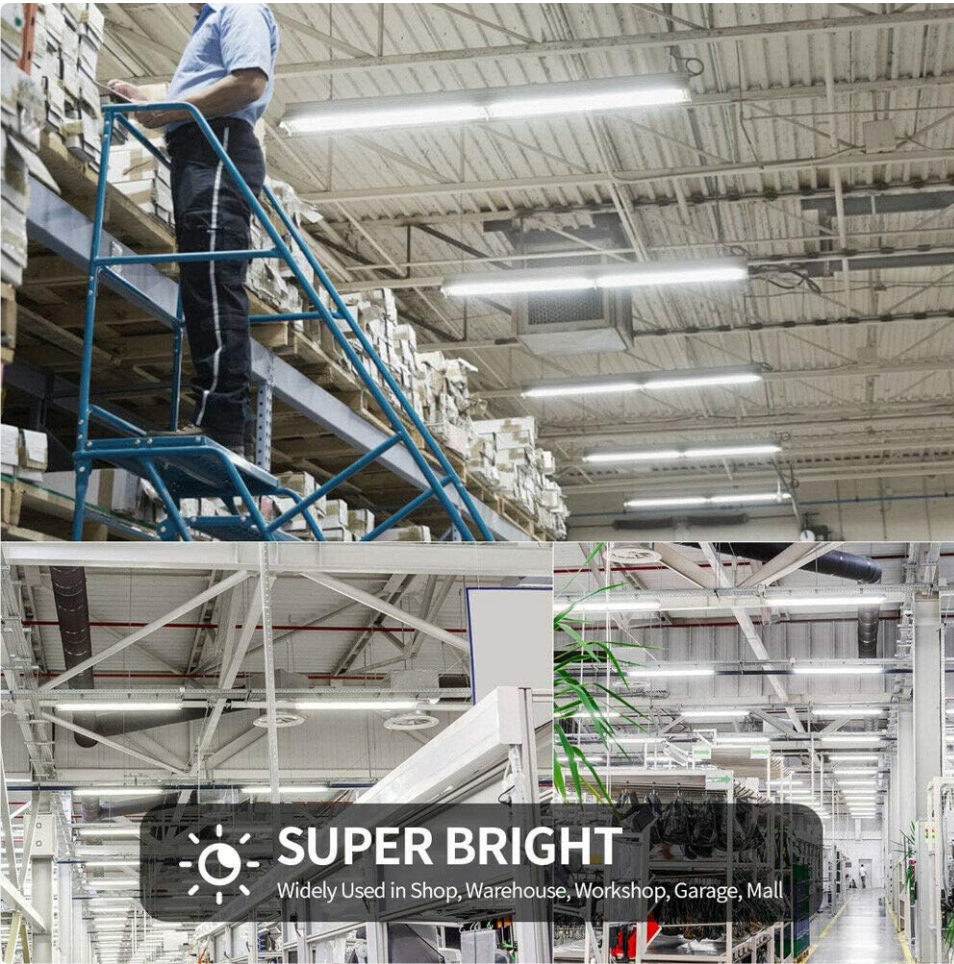


This image illustrates the two primary ways to connect the lights: using the plug-and-play power cord for individual operation, or using the small connectors to link multiple fixtures in a series.

6. OPERATING INSTRUCTIONS

Once installed and connected to power, operating the FTUBET LED Shop Light Fixture is straightforward.

- **Power On/Off:** If using the power cord with an on/off switch, simply toggle the switch to turn the light on or off.
- **Continuous Power:** If connected directly via a power cable or hardwired, the light will illuminate when power is supplied to the circuit. Control can be managed via a wall switch connected to the circuit.



This image displays the FTUBET LED shop lights effectively illuminating a large commercial environment, showcasing their high output and suitability for various applications.

LED

T8 Tubes Light

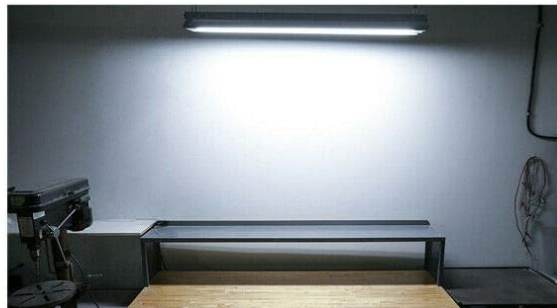
Garage lighting



Warehouse lighting



Workbench lighting



This visual guide demonstrates the versatility of the LED T8 tube lights, showing their effective use in garage, warehouse, and workbench settings.

7. MAINTENANCE

The FTUBET LED Shop Light Fixture requires minimal maintenance due to its long lifespan and durable construction.

- **Cleaning:** Periodically wipe the fixture with a soft, dry cloth to remove dust and debris. Do not use abrasive cleaners or solvents. Ensure the fixture is cool and power is disconnected before cleaning.
- **Inspection:** Regularly inspect the power cords, connectors, and mounting clips for any signs of wear, damage, or loose connections. Address any issues promptly.
- **No User-Serviceable Parts:** The LED components are integrated and not user-serviceable. Do not attempt to open or repair the fixture.

8. TROUBLESHOOTING

If you encounter issues with your FTUBET LED Shop Light Fixture, refer to the following common problems and solutions:

Problem	Possible Cause	Solution
---------	----------------	----------

Light does not turn on	No power supply Loose connection Faulty switch/outlet	Check circuit breaker/fuse. Ensure power cord is securely plugged in. Verify connections between linked fixtures. Test outlet with another device.
Light flickers	Unstable power supply Loose connection Overloaded circuit	Ensure stable power source. Check all connections for tightness. Reduce the number of lights on the circuit if overloaded.
Only some linked lights work	Faulty connector Exceeded maximum linked lights (4) Damaged fixture in the chain	Check the connector between the last working light and the first non-working light. Ensure no more than 4 lights are linked in series. Isolate the faulty fixture by removing it from the chain.
Light is dim	Dust accumulation Voltage drop (for long runs)	Clean the fixture surface. Ensure adequate voltage supply, especially for longer linked runs.

If the problem persists after attempting these solutions, please contact FTUBET customer support.

9. WARRANTY AND SUPPORT

FTUBET products are manufactured to high-quality standards and are backed by a limited warranty. For specific warranty terms and conditions, please refer to the product packaging or contact FTUBET customer support.

Customer Support:

For technical assistance, troubleshooting not covered in this manual, or warranty claims, please contact FTUBET customer support through the following channels:

- **Online:** Visit the official FTUBET store on Amazon: [FTUBET Store](#)
- **Email:** Refer to your product packaging for direct email support.

Please have your product model number (Q1-8FT-YT-V4CC-20) and purchase date ready when contacting support.