

## Weber 7661

# Weber Handle Grill 'N Go Light (Model 7661) Instruction Manual

Your comprehensive guide to setting up, operating, and maintaining your Weber Handle Grill 'N Go Light.

## INTRODUCTION

Thank you for choosing the Weber Handle Grill 'N Go Light. This multifunctional grill light is designed to enhance your grilling experience by providing illumination where you need it most. It easily attaches to your grill handle and features a motion sensor for convenient operation. This manual provides detailed instructions to ensure proper use and longevity of your product.

## SETUP

### 1. Battery Installation

The Grill 'N Go Light requires 3 AAA batteries, which are included. To install or replace batteries:

1. Locate the battery compartment on the underside of the light unit.
2. Using a small Phillips head screwdriver, carefully remove the screws securing the battery cover.
3. Insert the 3 AAA batteries, ensuring correct polarity (+/-).
4. Replace the battery cover and tighten the screws.

### 2. Attaching to Grill Handle

The light is designed to securely attach to the handle of compatible Weber grills (Spirit, Genesis, and Summit models).

1. Align the clamp mechanism of the light with your grill's handle.
2. Gently press the light onto the handle until it clicks securely into place. Ensure it is firmly attached and does not wobble.
3. The light can be slid along the handle to adjust its position for optimal illumination.



Image: The Weber Handle Grill 'N Go Light securely attached to a grill handle.

## OPERATING INSTRUCTIONS

### 1. Powering On/Off

- **Manual On/Off:** The light features a small button on its side. Press this button to manually turn the light on or off.
- **Motion Sensor Activation:** For automatic operation, ensure the light is switched to the 'On' position. The integrated motion sensor will automatically turn the light on when the grill lid is lifted and turn it off when the lid is closed. This feature helps conserve battery life.



Image: The LED light of the Grill 'N Go Light illuminated.

### 2. Detachable Functionality

The Grill 'N Go Light can be easily detached from the handle to provide extra light wherever needed. Simply slide the light off the clamp mechanism to use it as a portable light source.



Image: A hand holding the Weber Handle Grill 'N Go Light after detaching it from the grill handle.



Image: A Weber grill with food cooking, brightly illuminated by the attached Grill 'N Go Light during nighttime.

## MAINTENANCE

### Cleaning

Wipe the light with a damp cloth to remove any grease or debris. Do not submerge the unit in water or use abrasive cleaners.

## Battery Care

Replace batteries when the light dims or stops functioning. Remove batteries if the unit will not be used for an extended period to prevent leakage.

## Storage

Store the Grill 'N Go Light in a dry place when not in use, especially during adverse weather conditions, to prolong its lifespan.

## TROUBLESHOOTING

Problem	Possible Cause	Solution
Light does not turn on.	Dead or incorrectly installed batteries.	Check battery polarity and replace if necessary.
Light does not turn on automatically.	Motion sensor is off or obstructed.	Ensure the manual switch is in the 'On' position. Clear any obstructions from the sensor area.
Light remains on when grill lid is closed.	Motion sensor malfunction or obstruction.	Check for debris near the sensor. If the issue persists, try resetting the light by removing and reinserting batteries.

## SPECIFICATIONS

- **Model:** 7661
- **Color:** Gray
- **Material:** Tough glass-reinforced nylon
- **Light Source Type:** Light Emitting Diode (LED)
- **Power Source:** Battery Powered (3 AAA batteries required, included)
- **Voltage:** 4.5 Volts
- **Brightness:** 300 Lumens
- **Mounting Type:** Handle Mount
- **Bulb Features:** Motion sensor with on/off switch
- **Product Dimensions:** 4.6"L x 2.5"W x 3"H
- **Compatibility:** Fits Current Spirit, Genesis, and Summit grills

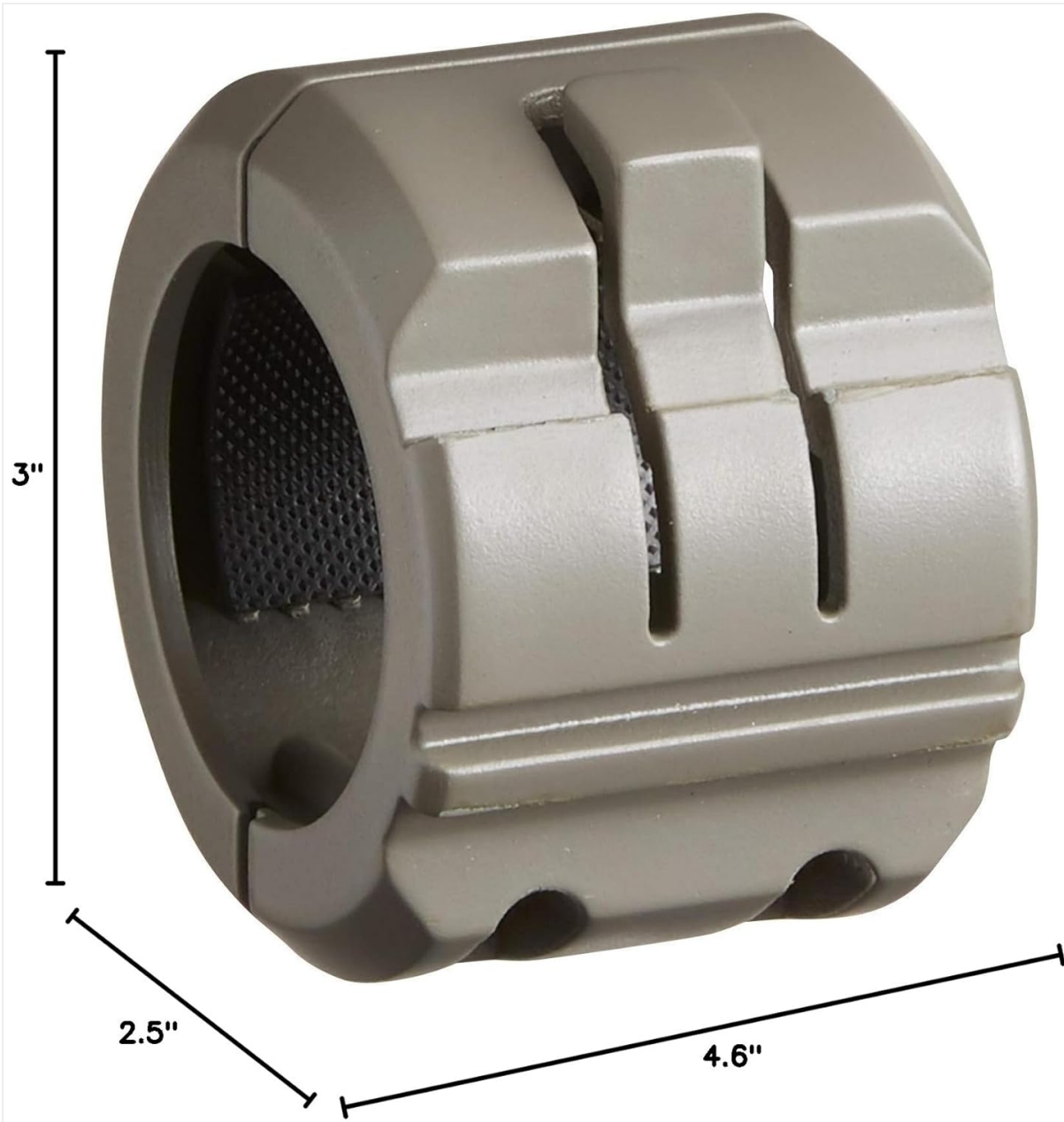


Image: Diagram showing the dimensions of the Weber Handle Grill 'N Go Light.

## WARRANTY AND SUPPORT

For information regarding product warranty, please refer to the warranty card included with your purchase or visit the official Weber website. For further assistance or support, please contact Weber customer service.

- **Website:** [www.weber.com](http://www.weber.com)
- **Customer Service:** Refer to your product packaging or the Weber website for regional contact information.