

## Manuals+

[Q & A](#) | [Deep Search](#) | [Upload](#)

[manuals.plus](#) /

› [WOSODA](#) /

› [WOSODA Trail Camera G200 Series User Manual](#)

## WOSODA G200 2Pack

# WOSODA Trail Camera G200 Series User Manual

Model: G200 2Pack

## INTRODUCTION

Thank you for choosing the WOSODA Trail Camera G200 Series. This manual provides detailed instructions for setting up, operating, and maintaining your trail camera. Designed for wildlife monitoring, outdoor scouting, and security, this camera captures high-resolution photos and videos with advanced night vision capabilities.

## PACKAGE CONTENTS

Please verify that all items listed below are included in your package:

- WOSODA Trail Camera (x2)
- AA Batteries (x16, 8 per camera)
- Wall Mount (x2)
- USB Cable (x2)
- SD Cards (x2, 32GB each)
- Mounting Belt (x2)
- Screws (x4)
- User's Manual (x1)



Figure 1: Included accessories and components.

## KEY FEATURES

- **High-Resolution Imaging:** Captures 30 MP crystal-clear images and full HD 1080P videos, providing detailed visuals during the day and clear black and white shots at night.
- **Fast Trigger Speed:** Activates in 0.3 seconds upon detecting movement, ensuring no critical moments are missed. Detection distance up to 60 feet.
- **Advanced Night Vision:** Equipped with upgraded infrared LEDs (850nm Low Glow IR technology) for super clear night vision without a bright flash, minimizing disturbance to wildlife.
- **Waterproof Design:** Built to withstand various outdoor conditions with an IP54 international protection rating.
- **Concealed Design:** Mimetic appearance blends with natural environments, and includes mounting straps and stand mount support for easy, discreet installation.
- **Versatile Recording Modes:** Features include Time Switch, Timer, and Time Stamp functions, suitable for various monitoring needs and optimizing power/storage.

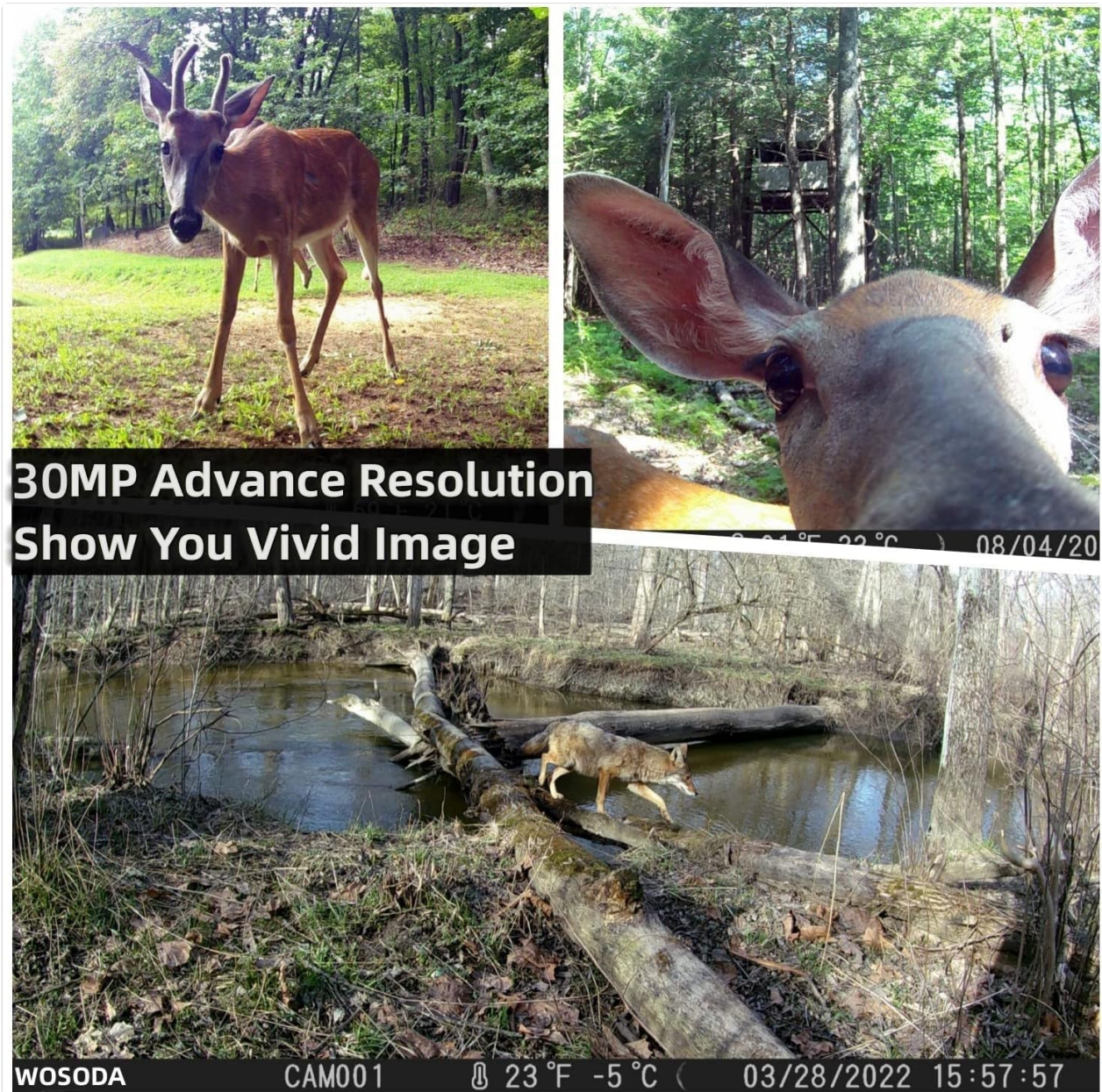


Figure 2: Examples of 30MP daytime image quality.



**Advanced Night Vision  
42pcs 850nm infrared lights**



Figure 3: Examples of night vision capabilities.

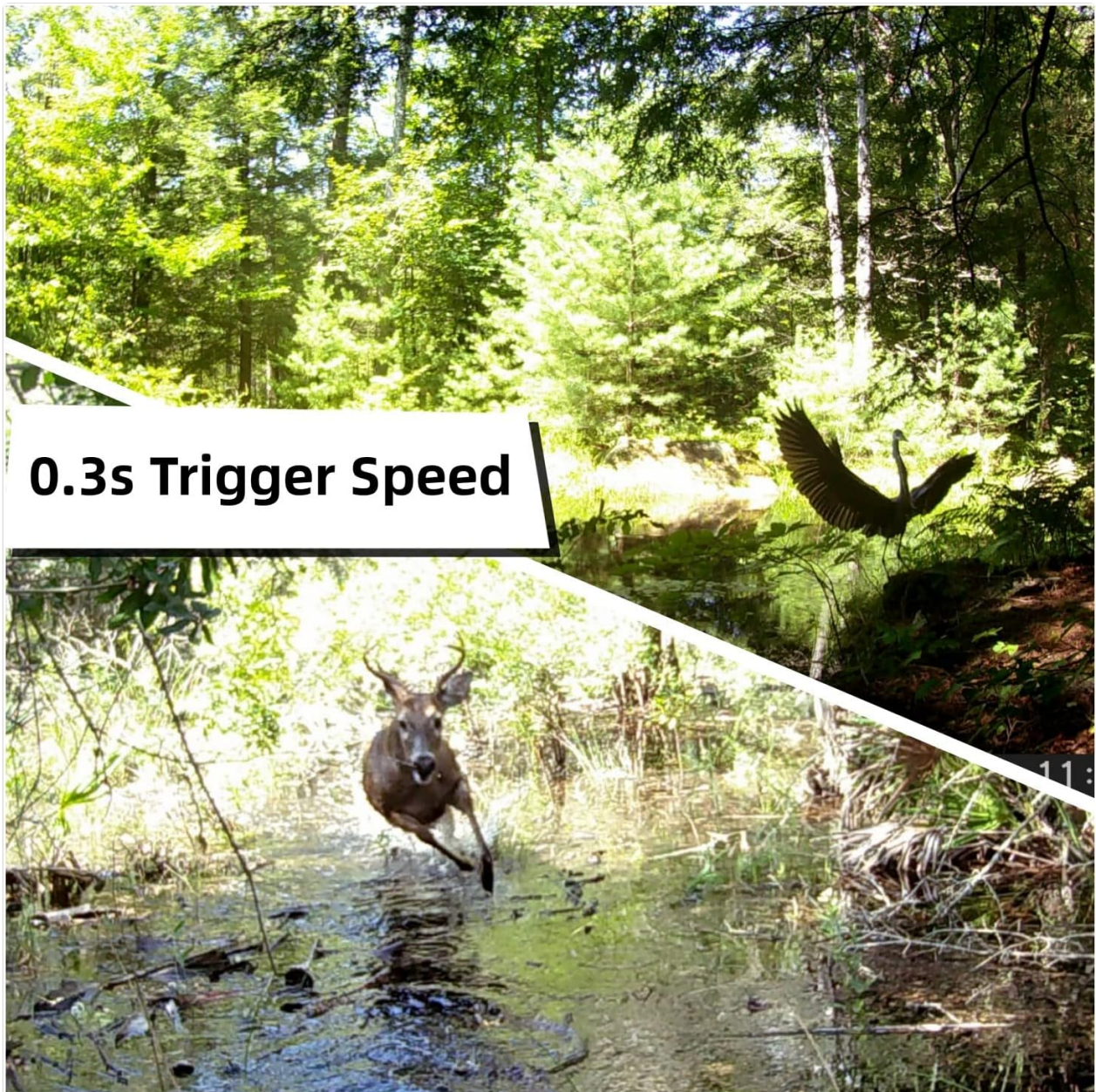


Figure 4: Demonstration of fast trigger speed.

## SETUP GUIDE

### 1. Battery Installation

The WOSODA Trail Camera requires 8 AA batteries for operation. Ensure correct polarity when inserting batteries.

1. Open the camera's latch to access the battery compartment.
2. Slide out the battery box.
3. Insert 8 AA batteries, matching the positive (+) and negative (-) terminals as indicated inside the compartment.
4. Slide the battery box back into the camera until it clicks securely into place.
5. Close the camera latch firmly to ensure waterproof sealing.

### 2. SD Card Installation

A 32GB SD card is included with each camera. The camera supports standard SD cards.

1. Locate the SD card slot on the side of the camera.
2. Insert the SD card with the metal contacts facing down until it clicks into place.
3. To remove, gently push the SD card in until it springs out.



Figure 5: Camera components for setup.

### 3. Mounting the Camera

The camera can be mounted using the included mounting belt or wall mount.

- **Using the Mounting Belt:** Thread the belt through the slots on the back of the camera and secure it around a tree or pole.
- **Using the Wall Mount:** Attach the wall mount to a flat surface using the provided screws. Then, secure the camera to the mount. Adjust the camera angle as needed.



Figure 6: Camera mounted on a tree.

# OPERATING INSTRUCTIONS

## 1. Powering On/Off

Locate the power switch inside the camera. Slide it to the "ON" position to power on the camera. Slide it to "OFF" to power off.

## 2. Mode Selection

The camera typically has different modes (e.g., Photo, Video, Photo+Video). Use the mode switch or menu buttons to select your desired operating mode.

## 3. Menu Settings

Access the camera's menu to configure various settings. Use the navigation buttons to scroll through options and the OK/Enter button to confirm selections.

### Common Menu Settings

Setting	Description	Typical Options
Mode	Selects the camera's primary function.	Photo, Video, Photo+Video
Photo Resolution	Sets the resolution for still images.	30MP, 16MP, 12MP, etc.
Video Resolution	Sets the resolution for video recordings.	1080P, 720P, etc.
PIR Sensitivity	Adjusts the sensitivity of the motion sensor.	High, Medium, Low
Trigger Interval	Sets the delay between consecutive triggers.	5s, 10s, 30s, 1 min, etc.
Time Stamp	Enables/disables date and time overlay on images/videos.	On/Off
Format SD Card	Erases all data on the SD card and prepares it for use.	Yes/No

## 4. Data Transfer

You can retrieve captured photos and videos using two methods:

- **Via USB Cable:** Connect the camera to your computer using the provided USB cable. The camera will appear as a removable disk, allowing you to copy files directly.
- **Using an SD Card Reader:** Remove the SD card from the camera and insert it into an SD card reader connected to your computer. This method is generally faster for large volumes of data.



Figure 7: Methods for viewing captured media.

## MAINTENANCE

- **Cleaning:** Use a soft, dry cloth to clean the camera lens and PIR sensor window. Avoid abrasive cleaners or solvents.
- **Battery Replacement:** Replace all 8 AA batteries when the low battery indicator appears or when performance degrades. Do not mix old and new batteries or different battery types.
- **SD Card Management:** Regularly format the SD card in the camera to ensure optimal performance and prevent data corruption. Back up important files before formatting.
- **Storage:** When not in use for extended periods, remove batteries and store the camera in a cool, dry place.
- **Waterproof Seal:** Periodically inspect the rubber gasket around the camera's casing to ensure it is clean and free of debris, maintaining its waterproof integrity.

## TROUBLESHOOTING

Problem	Possible Cause	Solution
Camera not powering on.	Low or dead batteries; incorrect battery polarity.	Replace all batteries with new ones; ensure correct +/- orientation.
No photos/videos captured.	SD card full or corrupted; incorrect mode setting; PIR sensitivity too low; camera not armed.	Format or replace SD card; check mode (Photo/Video); increase PIR sensitivity; ensure camera is in "ON" mode.
Poor night vision quality.	IR LEDs obstructed; low battery power affecting IR performance.	Clear any obstructions from IR LEDs; replace batteries.
False triggers.	PIR sensitivity too high; camera facing moving branches or heat sources.	Decrease PIR sensitivity; reposition camera to avoid environmental triggers.

Problem	Possible Cause	Solution
Water inside camera.	Latch not properly closed; damaged waterproof gasket.	Ensure latch is firmly closed; inspect and clean gasket, contact support if damaged.

## SPECIFICATIONS

Feature	Detail
Model	G200 2Pack
Still Image Resolution	Up to 30 MP (Effective Still Resolution: 16 MP)
Video Resolution	1080P HD (AVI format)
Trigger Speed	0.3 seconds
Detection Distance	Up to 60 feet
Night Vision	850nm Low Glow IR LEDs
Water Resistance	IP54 Waterproof
Power Source	8 x AA Batteries (per camera)
Storage	SD Card (up to 32GB included)
Dimensions (L x W x H)	2.36 x 1.57 x 1.18 inches
Weight	2.23 pounds (total for 2 cameras)
Connectivity	USB 2.0

## WARRANTY AND SUPPORT

WOSODA products are designed for reliability and performance. For warranty information, technical support, or any inquiries regarding your trail camera, please refer to the contact details provided on the product packaging or the official WOSODA website.

For common issues, please consult the Troubleshooting section of this manual.