

## Manuals+

[Q & A](#) | [Deep Search](#) | [Upload](#)

[manuals.plus](#) /

› [BONTEC](#) /

› [User Manual for BONTEC Universal TV Stand Base \(Model ST13\)](#)

## BONTEC ST13



# BONTEC Universal TV Stand Base

**MODEL: ST13**

Instruction Manual

## Introduction

---

Thank you for choosing the BONTEC Universal TV Stand Base. This stand is designed to provide a stable and adjustable platform for your television, enhancing your viewing experience. This manual provides detailed instructions for assembly, operation, maintenance, and troubleshooting to ensure safe and proper use of your new TV stand.

Please read this manual thoroughly before beginning installation and retain it for future reference. If you have any questions or encounter issues, refer to the troubleshooting section or contact customer support.

## Product Overview and Components

---

The BONTEC Universal TV Stand Base (Model ST13) is compatible with most 32-65 inch LCD, LED, and OLED TVs. It features a robust design with a tempered glass base and adjustable height settings.



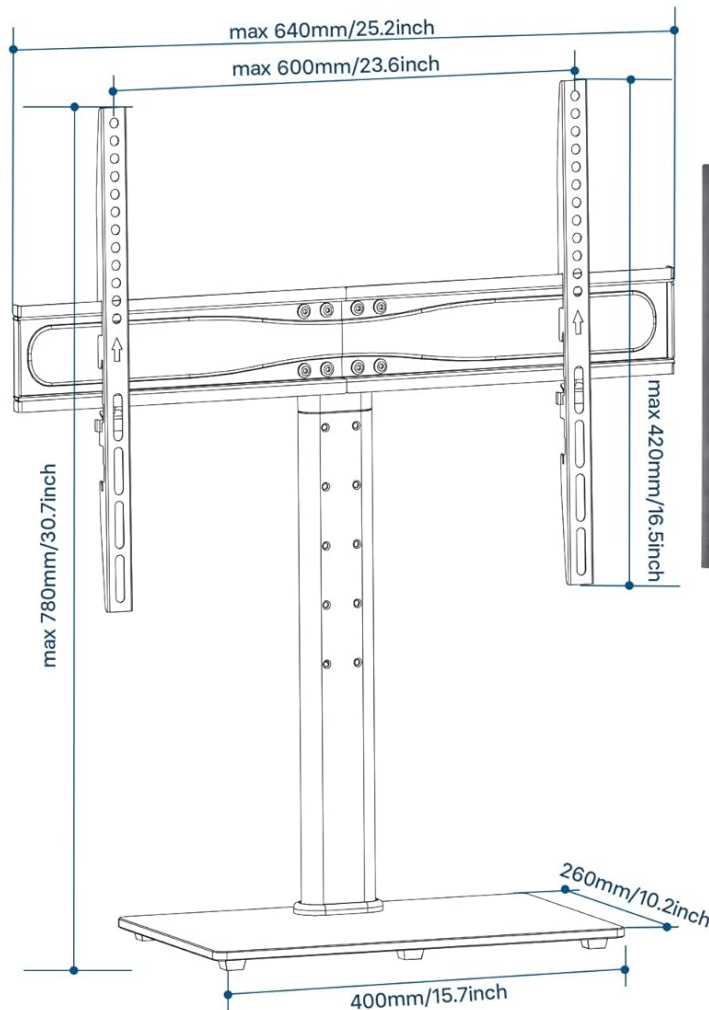
Figure 1: BONTEC Universal TV Stand Base (Model ST13)

### Compatibility:

- Fits most 32-65 inch TVs.
- **VESA Patterns Supported:** 100x100mm, 200x100mm, 200x200mm, 300x200mm, 300x300mm, 400x200mm, 400x300mm, 400x400mm, 600x400mm.
- Maximum TV weight capacity: 99 lbs (45 kg).

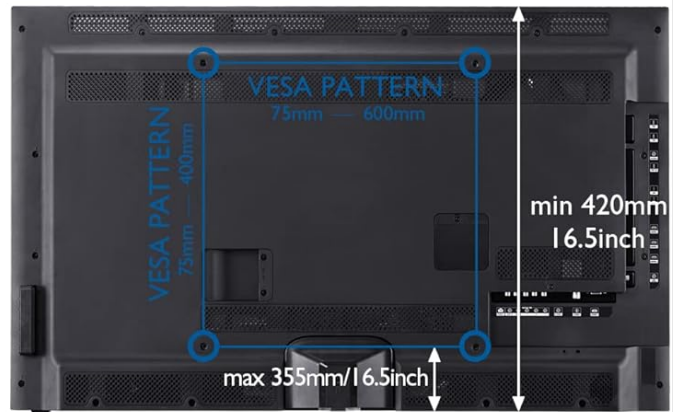
# ◆ Compatible with 32" -65" Screens

## OVERALL DIMENSIONS



## NEED YOUR ATTENTION

1. If your TV screen is less than 640mm x 420mm, the TV mounting arms will protrude from behind the TV.



2. For TVs with VESA size of 600x400mm, the distance from the lowest mounting hole of your TV to the glass base must be less than 355mm.

## VESA PATTERNS

75×75	100×100	200×100
200×200	300×200	300×300
400×300	400×400	600×400

Figure 2: Overall Dimensions and VESA Compatibility

### Important Note on VESA Compatibility:

- If your TV screen is less than 640mm x 420mm, the TV mounting arms may protrude from behind the TV.
- For TVs with a VESA size of 600x400mm, ensure the distance from the lowest mounting hole of your TV to the glass base is less than 355mm.

### Included Components:

Verify all parts are present before assembly. Refer to the diagram below for identification.

# ◆ Product Fitting Details

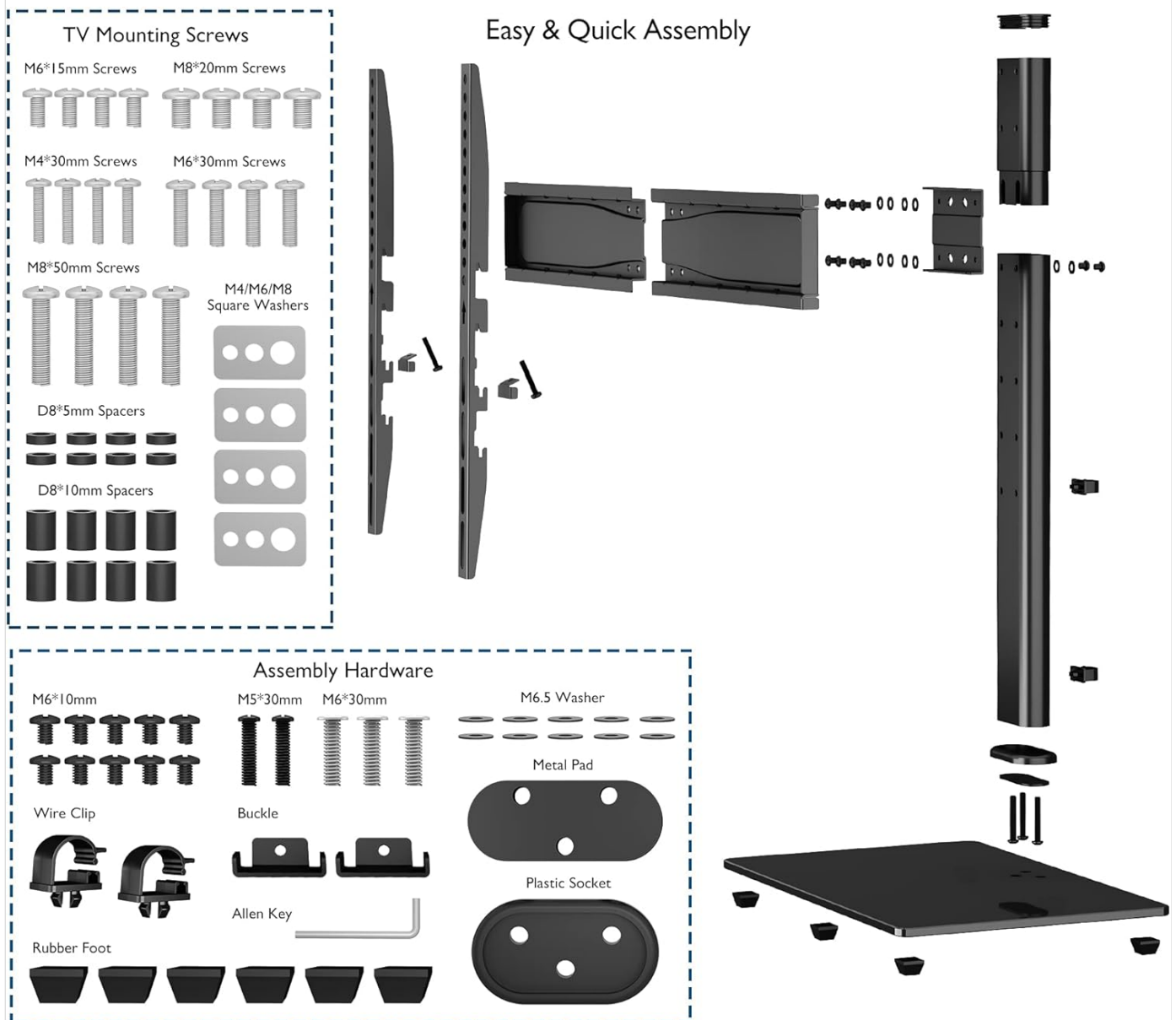


Figure 3: Detailed View of All Included Hardware and Components

The package includes various screws (M4, M6, M8), spacers, washers, wire clips, buckles, an Allen key, metal pads, plastic sockets, and rubber feet, along with the main stand components (tempered glass base, central column, mounting plate, and TV mounting arms).

## Setup and Installation

Follow these steps carefully to assemble your BONTEC Universal TV Stand Base.

Your browser does not support the video tag.

Video 1: Installation Guide for BONTEC Universal TV Stand Base (Model ST13). This video demonstrates the assembly process from start to finish, including attaching the TV.

### 1. Step 1: Assemble the Base and Column.

Attach the central column to the tempered glass base using the provided screws and fixings. Ensure all connections are secure.

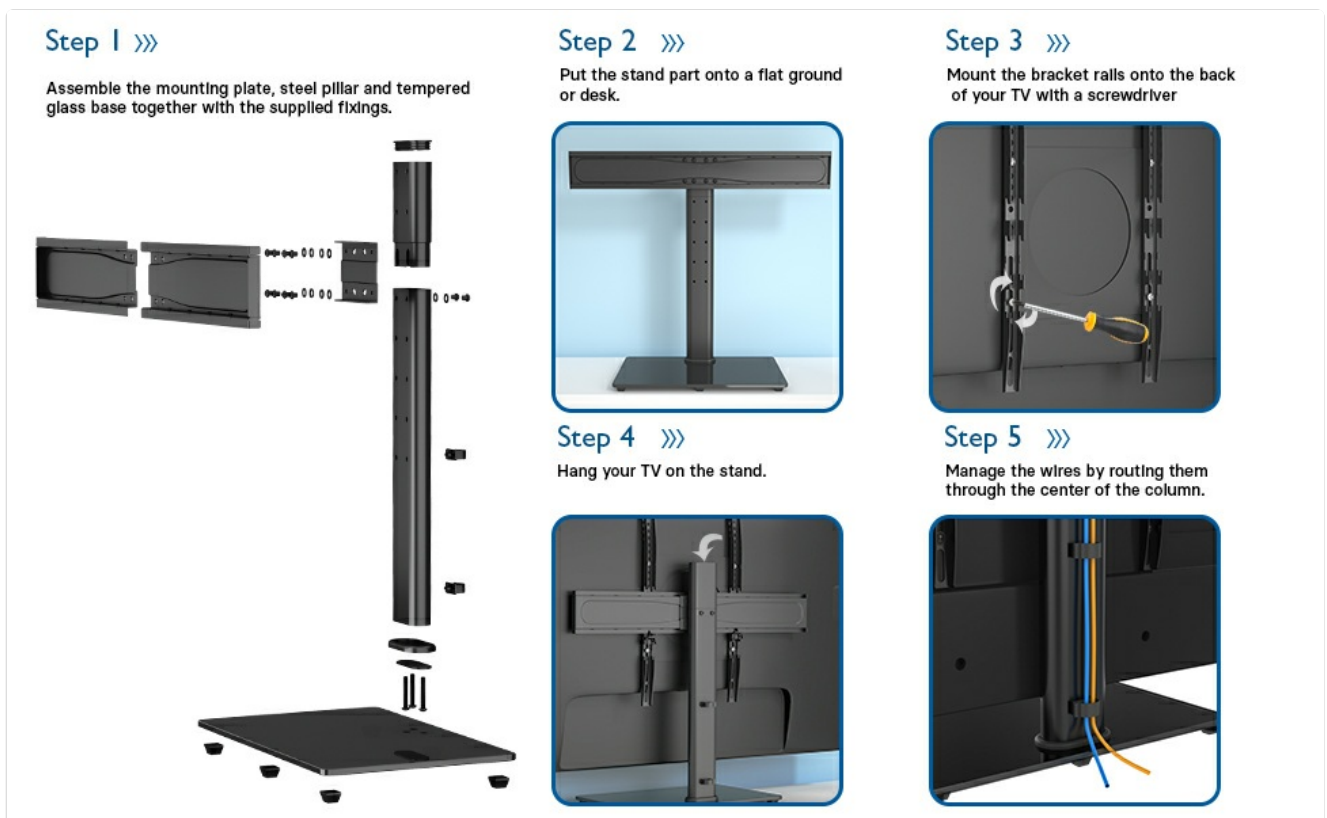


Figure 4: Initial assembly of the stand base and column.

## 2. Step 2: Prepare the Stand.

Place the assembled stand part onto a flat and stable surface, such as a desk or entertainment unit, where you intend to position your TV.

## 3. Step 3: Mount the Bracket Rails to Your TV.

Attach the TV mounting arms (bracket rails) to the back of your TV using the appropriate VESA screws and spacers. Use a screwdriver to securely fasten them. Ensure the arms are level and correctly aligned with your TV's VESA mounting holes.



Figure 5: Detail of the bracket fixing mechanism.

## 4. Step 4: Hang Your TV on the Stand.

Carefully lift your TV and hook the mounted bracket rails onto the main mounting plate of the stand. Ensure the TV is securely seated on the stand.

## 5. Step 5: Cable Management.

Utilize the integrated cable management clips to route and hide unsightly cables through the center of the column. This helps maintain a neat and tidy appearance for your entertainment setup.

## ◆ Multiple Functions to Meet Your Special Needs

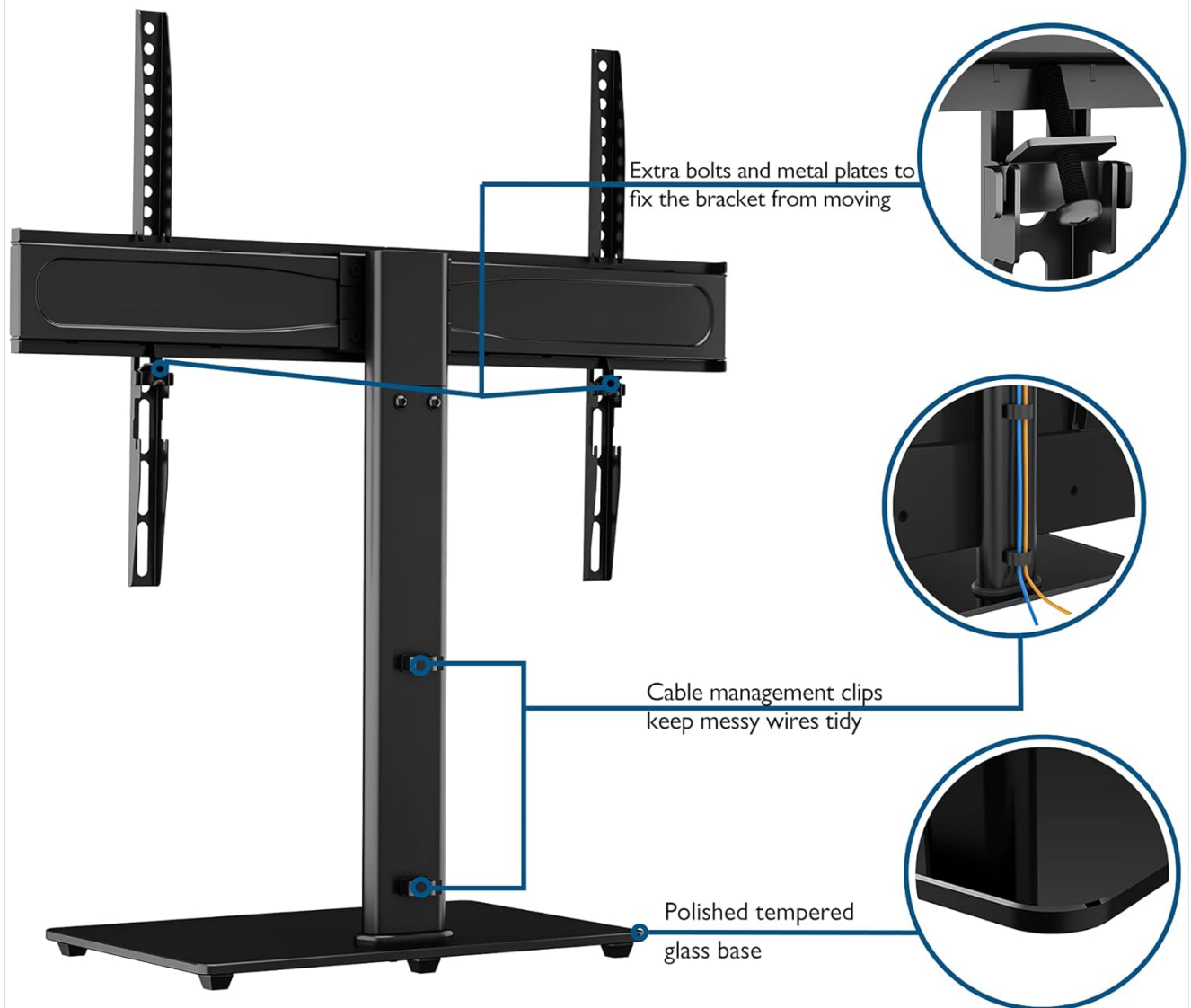


Figure 6: Cable management system and polished tempered glass base.

## Operating Instructions

### Height Adjustment:

The BONTEC TV stand offers multiple levels of height adjustment for optimal viewing angles.

- The main mount plate features 6 levels of height adjustment, with each level providing a 50mm (approx. 2 inches) change.
- The TV mounting arms can also be adjusted at 2 height levels, each by 60mm (approx. 2.6 inches), allowing for fine-tuning of the TV's vertical position.

## ◆ Height Adjustable

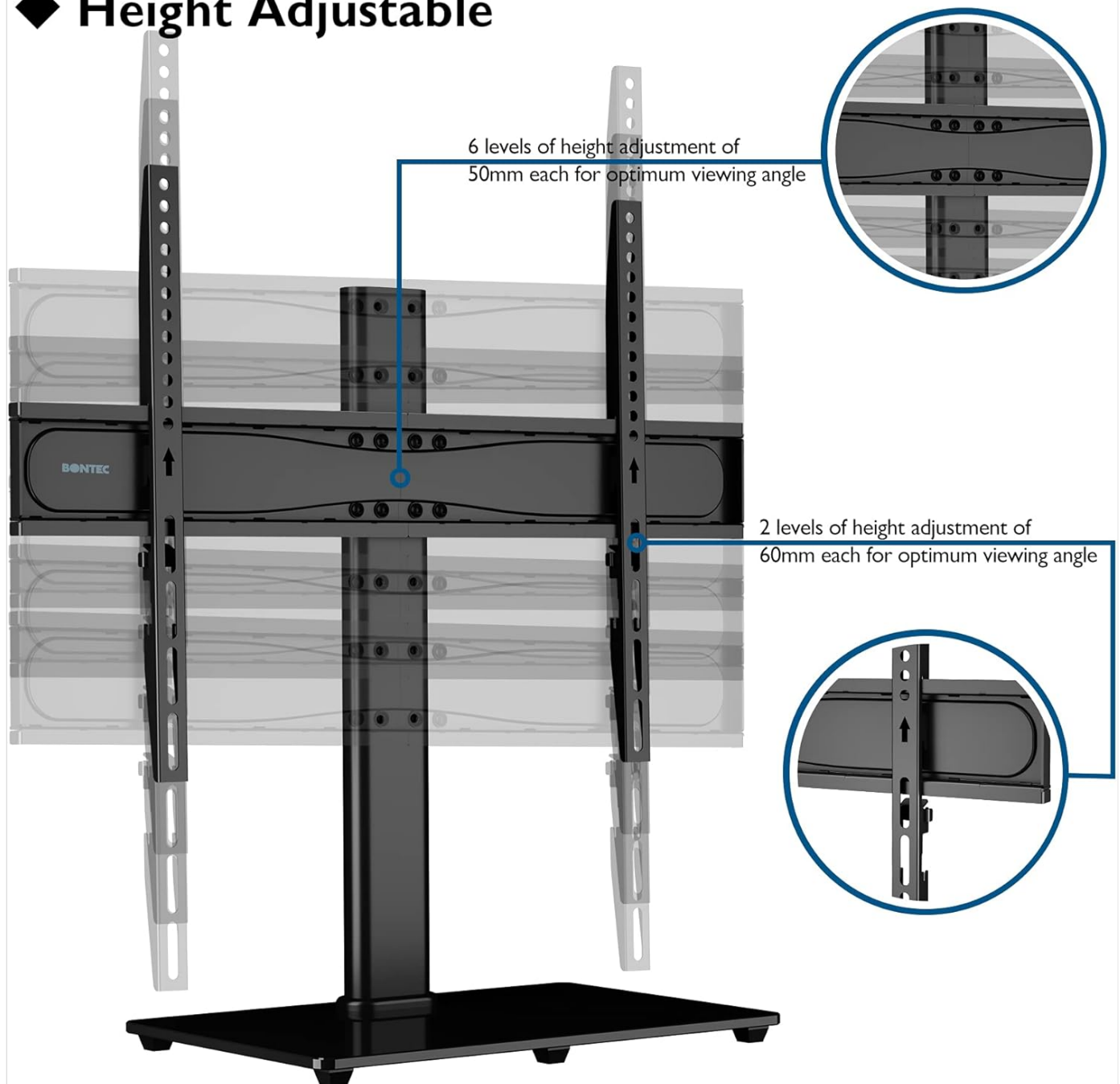


Figure 7: Illustration of height adjustment options.

To adjust the height, carefully loosen the securing screws on the mounting plate or arms, slide the TV to the desired height, and then re-tighten all screws firmly to ensure stability.

### Safety Features:

- **Security Wire:** A security wire is included to prevent the TV from tipping over, especially important in households with children. Ensure this wire is properly installed and secured to a wall stud or furniture.
- **Anti-slip Rubber Feet:** The tempered glass base is equipped with anti-slip rubber feet to protect your furniture from scratches and provide maximum stability for the stand.



## ◆ Quality Materials

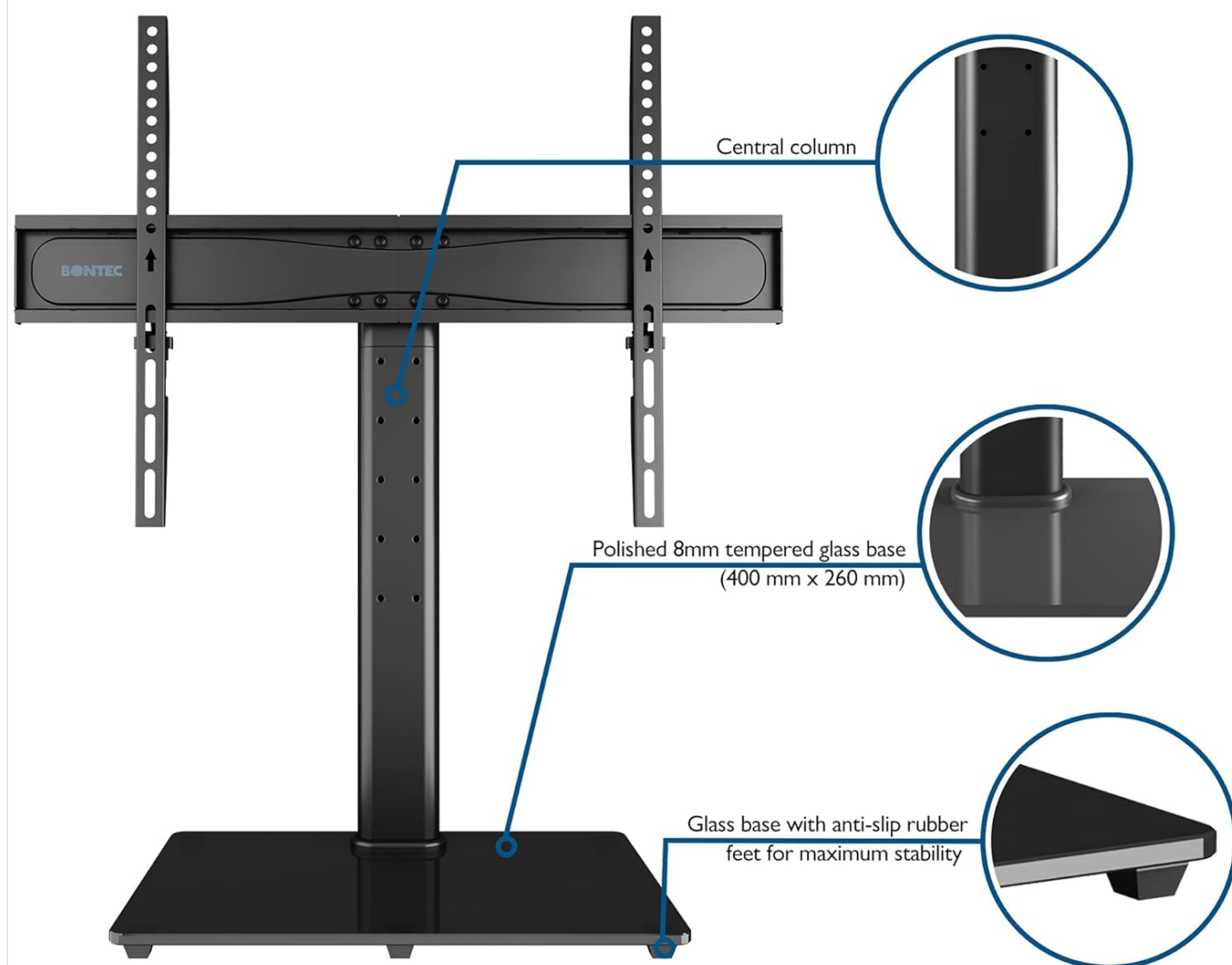


Figure 8: Details on the central column, tempered glass base, and anti-slip feet.

## Maintenance

Proper maintenance will ensure the longevity and continued performance of your TV stand.

- **Cleaning:** Use a soft, damp cloth to clean the metal and glass surfaces. Avoid abrasive cleaners or harsh chemicals that could damage the finish or glass.
- **Inspections:** Periodically check all screws and connections to ensure they remain tight. Over time, vibrations or movement can cause screws to loosen. Re-tighten as necessary.
- **Glass Care:** While the tempered glass base is durable, avoid placing excessively heavy or sharp objects on it to prevent scratches or damage.

## Troubleshooting

If you encounter any issues with your TV stand, refer to the common problems and solutions below.

Problem	Possible Cause	Solution
---------	----------------	----------



Problem	Possible Cause	Solution
Stand feels unstable or wobbly.	Loose connections; uneven surface; TV too heavy for stand.	Ensure all screws are tightened securely. Place the stand on a flat, level surface. Verify your TV's weight does not exceed the 99 lbs (45 kg) capacity.
TV mounting arms protrude from behind the TV.	TV screen size is smaller than 640mm x 420mm.	This is a known characteristic for smaller TVs. It does not affect functionality or stability. Ensure VESA compatibility is met.
Cables are messy despite using clips.	Too many cables; improper routing.	Ensure cables are routed neatly through the central column's clips. Consider using additional cable ties for very thick bundles.
TV is not at desired height.	Incorrect height adjustment.	Refer to the "Height Adjustment" section and re-adjust the mounting plate and/or TV arms to your preferred viewing height.

## Specifications

Feature	Detail
Model Number	ST13
Compatible TV Sizes	32-65 inches
Max Load Capacity	99 lbs (45 kg)
VESA Compatibility	100x100, 200x100, 200x200, 300x200, 300x300, 400x200, 400x300, 400x400, 600x400mm
Height Adjustment (Mount Plate)	6 levels, 50mm each
Height Adjustment (Mounting Arms)	2 levels, 60mm each
Base Material	8mm Tempered Glass (400mm x 260mm)
Column Material	Alloy Steel
Item Weight	11.6 pounds

## Warranty and Support

BONTEC products are manufactured with quality and reliability in mind. For specific warranty details, please refer to the warranty information provided with your purchase or visit the official BONTEC website.

For customer support, technical assistance, or to report any issues, please contact BONTEC customer service through the retailer where you purchased the product or via the contact information available on the official BONTEC website.

An additional installation manual in PDF format can be found [here](#).