



Manuals.plus /

› **Sunluway /**

› Sunluway MG21103 Front Axle Tube Seal Kit Instruction Manual

Sunluway MG21103

Sunluway MG21103 Front Axle Tube Seal Kit Instruction Manual

Model: MG21103

INTRODUCTION

This manual provides detailed instructions for the installation, maintenance, and general information regarding the Sunluway MG21103 Front Axle Tube Seal Kit. This kit is designed to protect your vehicle's front axle tubes from contaminants, ensuring optimal performance and longevity of your axle components. Please read these instructions thoroughly before proceeding with installation.

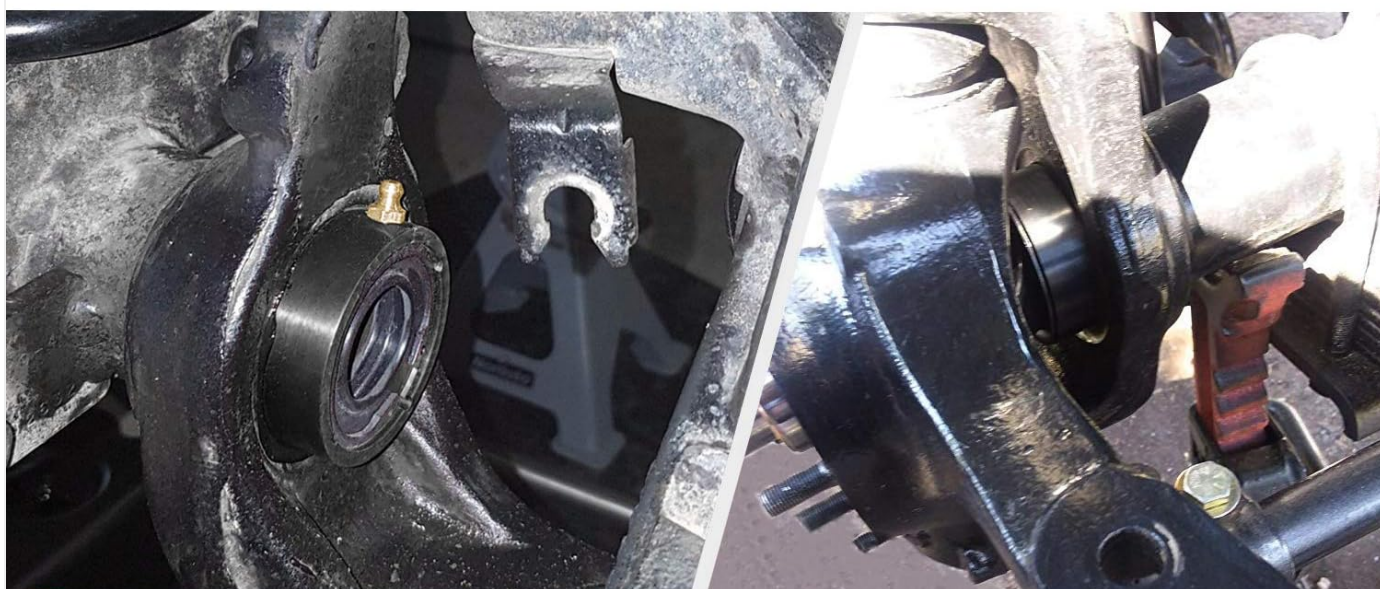


Image: Sunluway MG21103 Front Axle Tube Seal Kit and an example of installation.

PRODUCT OVERVIEW

The Sunluway MG21103 Front Axle Tube Seal Kit is engineered for durability and effective sealing. It is compatible with various Jeep models equipped with Dana 30 and Dana 44 front axles.

Material and Construction

Each seal is constructed from high-quality Billet Aluminum, featuring an anti-corrosion coating for enhanced durability. The design incorporates three O-ring seals on the outer perimeter and two inner washer seals to provide a robust barrier against external elements.



Safe & Secure

MATERIAL

Made from high quality Billet Aluminum with anti-corrosion coating, it comes with 3 o-ring seals on the outer and 2 inner washer seals.

PERFORMANCE

Helps to keep mud and debris out of your front axle tubes. Rebuilding these seals is easy and quick. Easy access Zerk fitting is located on the side to inject grease.



Image: Detailed view of the axle tube seal, showing its robust construction and sealing components.

Functionality

These seals are designed to prevent mud, water, dust, and other debris from entering the front axle tubes. This protection is crucial for maintaining the cleanliness and operational integrity of the inner axle components. The seals feature an easily accessible Zerk fitting on the side, allowing for convenient grease injection to maintain lubrication and sealing effectiveness.

Compatibility

The MG21103 Front Axle Tube Seal Kit is compatible with the following Jeep models and axle types:

- Jeep XJ (1984-2001 Cherokee)
- Jeep YJ (1987-1995 Wrangler)
- Jeep TJ (1997-2006 Wrangler)
- Jeep JK (1997-2018 Wrangler)
- Equipped with Dana 30 or Dana 44 front axles.



MG21103 Front Axle Tube Seal Kit



High quality



Easy to install



Durable



Secure

Compatible Models

Fit for Jeep XJ, YJ, TJ and JK front axles. (1984-2001 Cherokee / 1984-2001 Grand Cherokee / 1997-2006 TJ / 1987-1995 Wrangler / 1997-2018 Wrangler)



Image: Product features and a list of compatible Jeep models.

PACKAGE CONTENTS

Upon opening the package, verify that all components are present and undamaged.

- 2 x Sunluway MG21103 Front Axle Tube Seals



Package Content

2 PCS Front Axle Tube Seals



Image: Contents of the MG21103 Front Axle Tube Seal Kit.

SETUP AND INSTALLATION

Proper installation is critical for the effective performance of the axle tube seals. If you are not confident in performing this installation, it is recommended to seek assistance from a qualified automotive technician.

Required Tools and Materials (Not Included):

- Basic hand tools (wrenches, sockets)
- Wire brush or similar cleaning tool
- Brake cleaner or degreaser
- High-temperature grease
- Grease gun
- Rubber mallet or soft-faced hammer
- Block of wood or appropriate installation driver

- RTV sealant (optional, for outer seal perimeter)

Installation Steps:

1. **Prepare the Vehicle:** Safely lift and support the front of the vehicle using jack stands. Remove the wheels, brake calipers, rotors, and hub assemblies to gain access to the axle shafts.
2. **Remove Axle Shafts:** Carefully remove the front axle shafts from the axle tubes.
3. **Clean Axle Tubes:** Thoroughly clean the inside of the axle tubes where the seals will be seated. Remove any rust, dirt, or debris using a wire brush and degreaser. Ensure the surface is smooth and free of imperfections that could compromise the seal.
4. **Prepare Seals:** Apply a thin layer of high-temperature grease to the O-rings and inner washer seals of the MG21103 axle tube seals.
5. **Install Seals:**
 - Carefully insert the prepared axle tube seals into the cleaned axle tubes.
 - Using a block of wood and a rubber mallet, gently tap the seals into place until they are fully seated. Ensure they are installed squarely and evenly.
 - Some users may opt to apply a thin bead of RTV sealant around the outer perimeter of the seal before installation for an extra layer of protection against contaminants.
6. **Grease Before Axle Insertion:** Apply a generous amount of high-temperature grease to the inside of the newly installed axle tube seals before re-inserting the axle shafts. This aids in smooth installation and initial lubrication.



Grease the tubes before inserting them and grease tubes after installing the axle shafts.

Image: Greasing the axle tube seals prior to axle shaft installation.

7. **Reinstall Axle Shafts:** Carefully slide the axle shafts back into the axle tubes, ensuring they pass through the new seals without damage.
8. **Reassemble Components:** Reinstall the hub assemblies, rotors, brake calipers, and wheels. Torque all fasteners to manufacturer specifications.
9. **Final Greasing:** After the axle shafts are fully installed and the hub assembly is in place, use a grease gun to inject additional high-temperature grease into the Zerk fittings on the axle tube seals until resistance is felt. This ensures the seals are adequately lubricated and creates a positive pressure barrier.

MAINTENANCE

Regular maintenance of your Sunluway MG21103 Front Axle Tube Seals will extend their lifespan and ensure continued protection for your axle components.

- **Grease Injection:** Periodically (e.g., during oil changes or before/after off-road excursions), inject high-temperature grease into the Zerk fittings on each axle tube seal using a grease gun. This replenishes lubrication and helps flush out any minor contaminants that may have bypassed the outer seals.
- **Visual Inspection:** Regularly inspect the seals for any signs of damage, cracking, or excessive wear. Address any

issues promptly to prevent axle contamination.

TROUBLESHOOTING

If you encounter issues after installing the axle tube seals, consider the following:

- **Difficulty Seating Seals:** Ensure the axle tubes are thoroughly cleaned and free of burrs or rust. A proper installation driver or a block of wood with a rubber mallet should be used to apply even pressure. Do not force the seals, as this can damage them.
- **Axle Shaft Not Sliding Through:** Verify that the axle tubes and seals are properly aligned. Ensure the seals are seated correctly and not cocked. Apply ample grease to the seals and axle shaft splines.
- **Continued Contamination/Leaks:**
 - Recheck the installation to ensure the seals are fully and evenly seated.
 - Confirm that the correct seals were purchased for your specific Dana axle type (Dana 30 vs. Dana 44).
 - Ensure regular greasing through the Zerk fittings is performed.
 - Inspect the axle shafts themselves for any damage or wear that might compromise the seal's effectiveness.
- **Zerk Fitting Issues:** If a Zerk fitting is cross-threaded or damaged, it may need to be replaced. Ensure proper tools are used when greasing.

If problems persist, it is advisable to consult with a professional mechanic.

SPECIFICATIONS

Feature	Detail
Model Number	MG21103 (Manufacturer Part Number: SY0073)
Brand	Sunluway
Material	Billet Aluminum with anti-corrosion coating
Seal Type	3 outer O-rings, 2 inner washer seals
Grease Fitting	Integrated Zerk fitting
Compatibility	Jeep XJ, YJ, TJ, JK with Dana 30 & Dana 44 front axles
Item Weight	13.4 ounces (per kit)
Package Dimensions	6.02 x 2.91 x 2.8 inches



Product Size

Meet or Exceed OEM Specifications



Image: Product dimensions for reference.

WARRANTY AND SUPPORT

For specific warranty information or technical support regarding your Sunluway MG21103 Front Axle Tube Seal Kit, please refer to the product packaging or contact Sunluway customer service directly. Contact details can typically be found on the manufacturer's official website or through your point of purchase.

