

JOYIN 10954

JOYIN Mini Claw Machine (Model 10954) Instruction Manual

Your guide to setting up, operating, and maintaining your electronic arcade game.

INTRODUCTION

Thank you for choosing the JOYIN Mini Claw Machine. This electronic arcade game is designed to provide engaging entertainment with its lights, sounds, and interactive claw mechanism. This manual provides essential information for safe and effective use, including setup, operation, and maintenance guidelines.



Image: The JOYIN Mini Claw Machine, showcasing the main unit, 10 plush characters, 12 coins, 8 prize capsules, and a USB power cable.

SETUP

- Unboxing:** Carefully remove all components from the packaging. Ensure you have the claw machine unit, 10 plush characters, 12 coins, 8 prize capsules, and 1 USB power cable.
- Powering the Machine:** The machine can be powered via the included USB cable or by inserting 3 'D' batteries (not included) into the battery compartment located on the bottom of the unit. Use a small screwdriver to open the battery compartment.
- Adding Prizes:**
 - To use the prize capsules, snap the clear and solid halves together. You can place small candies or other tiny prizes inside.
 - Open the top lid of the claw machine.
 - Carefully place the plush characters and filled prize capsules into the play area. Do not overfill to ensure proper claw operation.

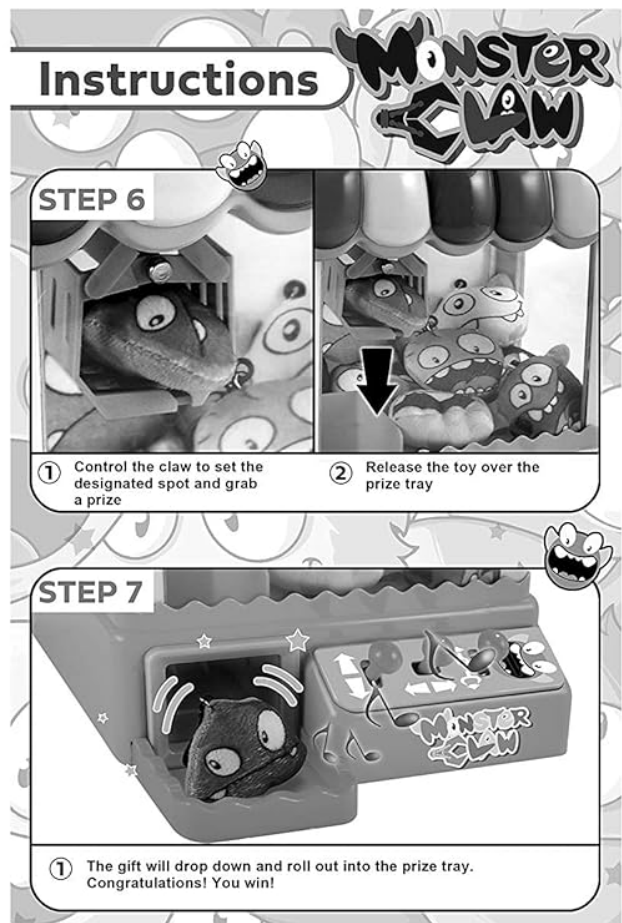
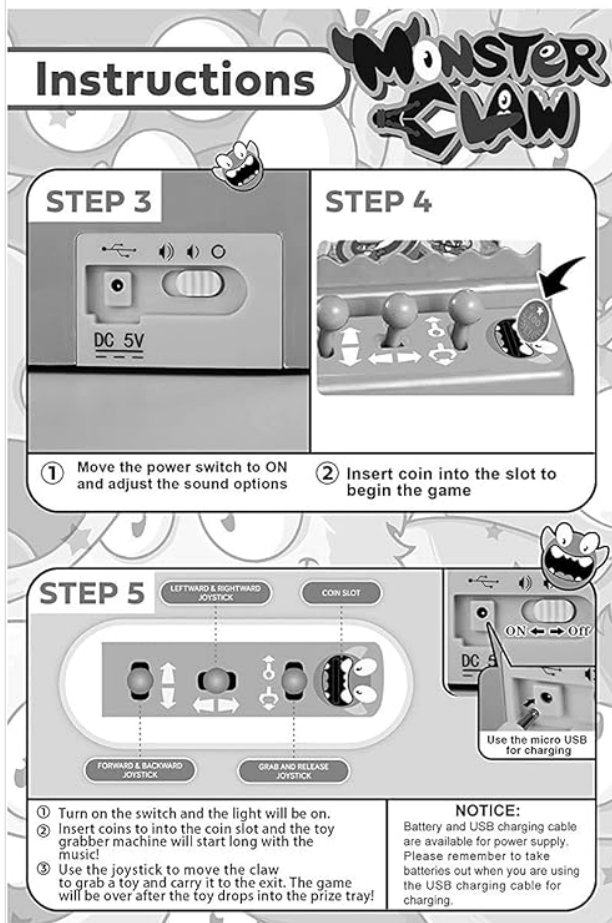
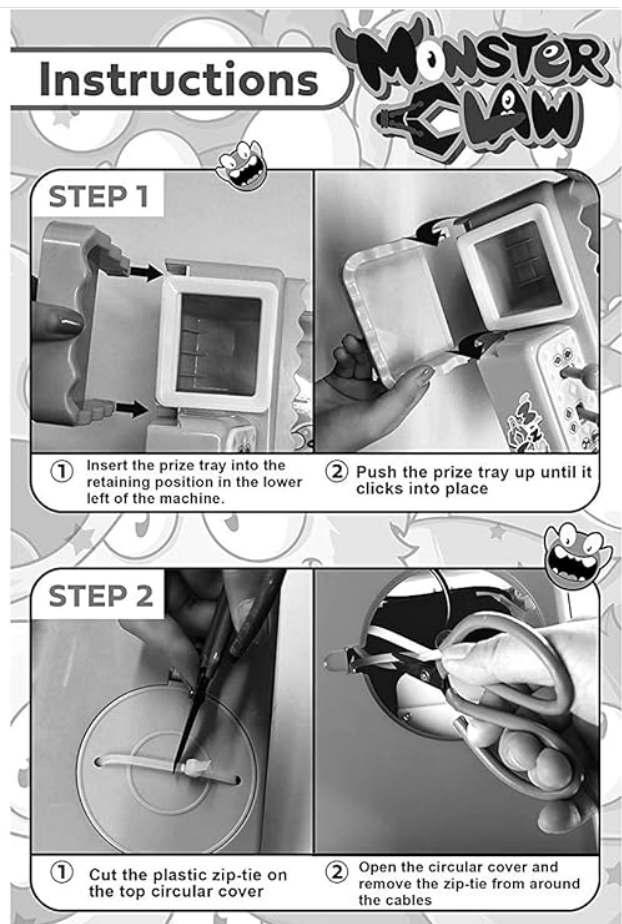
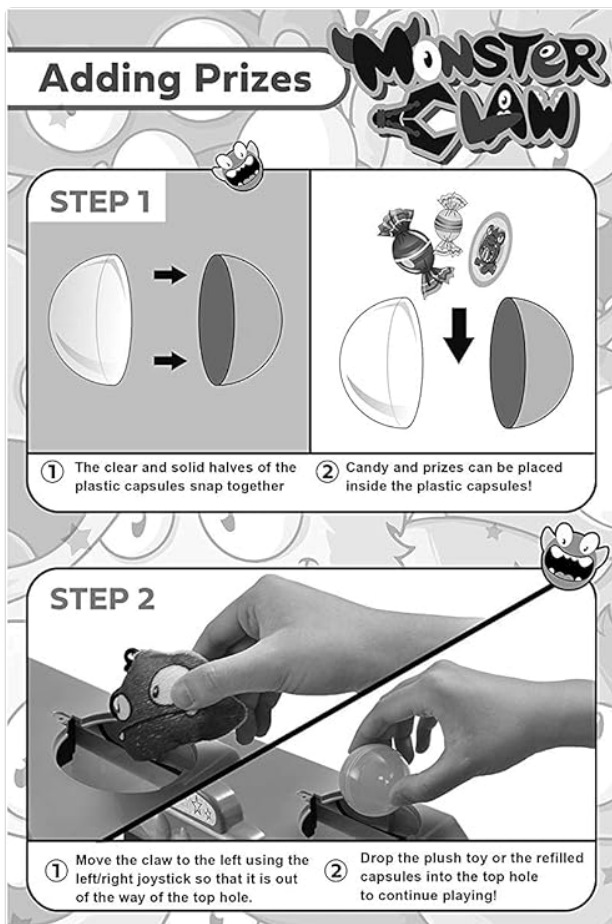


Image: A visual guide demonstrating how to assemble prize capsules, load plush toys and capsules into the machine, and prepare the claw mechanism by removing plastic ties.

1. **Power On:** Locate the power switch (usually on the back or side) and turn the machine ON. Adjust the sound options as desired.
2. **Insert Coin:** Insert one of the included coins into the coin slot. This will activate the game, initiating music and a countdown timer.
3. **Control the Claw:** Use the joysticks to move the claw:
 - One joystick controls forward/backward movement.
 - Another joystick controls left/right movement.
 - A button or third joystick controls the claw's descent and grab action.
4. **Grab a Prize:** Position the claw directly over your desired prize. Press the grab button to lower the claw. If successful, the claw will grab the prize and move it towards the prize chute.
5. **Collect Prize:** Once the prize drops into the chute, retrieve it from the collection area.
6. **Game End:** The game ends when the timer runs out or a prize is successfully retrieved. Insert another coin to play again.



Image: Two children engaged in playing the JOYIN Mini Claw Machine, highlighting the interactive nature and skill-building aspects of the game.



Image: A display of the 10 unique plush monster characters, each with a keychain hook, that come with the JOYIN Mini Claw Machine.

MAINTENANCE

- **Cleaning:** Wipe the exterior of the machine with a soft, dry cloth. Avoid using abrasive cleaners or solvents.
- **Prize Management:** Regularly check the prize area to ensure prizes are not jammed and the claw can move freely. Replenish prizes as needed.
- **Battery Replacement:** If using batteries, replace them when the machine's performance diminishes or lights dim. Ensure correct polarity when inserting new batteries.

TROUBLESHOOTING

- **Machine Not Turning On:** Check if the USB cable is securely connected or if the batteries are correctly inserted and not depleted.
- **Claw Not Moving:** Ensure a coin has been inserted and the game is active. Check for any obstructions preventing claw movement.

- **Prizes Not Being Grabbed:** Ensure the prize area is not overfilled. The claw may struggle with prizes that are too heavy or oddly shaped.
- **Sound Issues:** Verify the sound options are adjusted to your preference.

SPECIFICATIONS

- **Model:** 10954
- **Dimensions:** 15.75 x 10.51 x 8.25 inches
- **Item Weight:** 4.72 pounds
- **Power Source:** USB cable (included) or 3 'D' batteries (not included)
- **Included Accessories:** 10 plush characters, 12 coins, 8 prize capsules, 1 USB power cable
- **Recommended Age:** 3 years and up



Image: The JOYIN Mini Claw Machine with key dimensions labeled: 15.5 inches in height, 10.2 inches in width, and 8 inches in depth.

WARRANTY

JOYIN products are manufactured with quality and safety in mind. For specific warranty information, please refer to the product packaging or contact JOYIN customer service directly. Keep your purchase receipt for warranty claims.

SUPPORT

Should you encounter any issues or have questions regarding your JOYIN Mini Claw Machine, please contact

our customer support team. Contact details can typically be found on the product packaging or our official website. Please have your model number (10954) and purchase details ready when contacting support.