



Manuals.plus /

- › GARAGE STOP /
- › GARAGE STOP G3T-BX/G3T-R 3-Button Remote Instruction Manual

GARAGE STOP 56151-597

GARAGE STOP G3T-BX/G3T-R 3-Button Remote Instruction Manual

Brand: GARAGE STOP | Model: 56151-597

1. INTRODUCTION AND OVERVIEW

The GARAGE STOP G3T-BX/G3T-R 3-Button Remote is a high-quality replacement garage door opener remote designed for convenient and secure access to your garage. This remote is engineered to be compatible with a wide range of Genie IntelliCode and Overhead Door CodeDodger systems, offering a reliable and cost-effective solution for your garage access needs.



Image: Two GARAGE STOP G3T-BX/G3T-R 3-Button Remotes, showing their compact design and three black control buttons on a grey casing.

2. PRODUCT FEATURES

- **Broad Compatibility:** Works with all Overhead Door CodeDodger and Genie IntelliCode garage door opener remotes (1997 to present). Note: Not compatible with dip switches.
- **Advanced Security:** Features CodeDodger technology with auto-seek capabilities, responding to both 315 MHz and 390 MHz frequencies to mitigate interference.
- **Multi-Door Control:** Capable of operating up to 3 individual garage door openers.
- **Extended Range:** Offers a long-distance operating range of up to 120 feet for convenient access.
- **User-Friendly Design:** Sleek, compact device equipped with large, easy-to-access buttons.
- **Convenient Portability:** Includes a visor clip for easy attachment to your car's sun visor, allowing for quick access from the driver's seat.
- **Ready to Use:** Comes with a pre-installed CR2032 lithium battery.



Image: An infographic highlighting the key features of the remote, including broad compatibility, multi-door control, advanced security, and long-range operation.

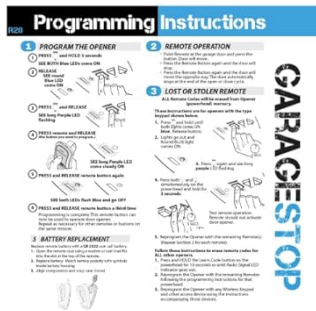
3. PACKAGE CONTENTS

Your GARAGE STOP remote package includes the following items:

- 2 x GARAGE STOP G3T-BX/G3T-R 3-Button Remotes
- 2 x CR2032 Lithium Batteries (pre-installed in remotes)
- 2 x Visor Clips
- 1 x Programming Guide (printed instructions)

Included with Purchase

Remote Control



Program Guide

Visor Clip

Batteries

Image: A visual representation of the package contents, including the two remotes, visor clips, and batteries.

4. COMPATIBILITY

This remote is designed for compatibility with specific garage door opener systems. Please verify your opener's compatibility before proceeding with programming.

- **Compatible with:** All Overhead Door CodeDodger and Genie IntelliCode garage door opener remotes manufactured from 1997 to present.
- **Specifically Compatible Models:** G3T-BX, G3T-R, G3T-A, G1T-BX, G1T-A, O1T-BX, O1T-A, GITR-3, GIT-1, GIT-2, GIT-3, O3T-BX, OCDTR-3, OCDT-1, OCDT-2, OCDT-3.
- **Important Note:** This remote is NOT compatible with garage door openers that use dip switches for programming.

Garage Stop Provides premium protection for your garage door. Our garage remotes come with codes that automatically switch every time a cycle completes, making it challenging for an intruder to enter the garage.

Replacement for Part Numbers:

Genie: G3T-BX G3T-R G1T-BX GITR-3 GIT-1 GIT-2 GIT-3

Compatible with:

Overhead Door: O1T-BX O3T-BX OCDTR-3 OCDT-1 OCDT-2 OCDT-3

Features:

- Auto-Seek Dual Frequency 315/390MHz
- Controls up to 3 Garage Doors
- Includes visor clip and battery
- Number of buttons: 3



Image: A visual guide illustrating the broad compatibility of the remote with Genie IntelliCode and Overhead Door systems.

5. SETUP AND PROGRAMMING

Follow these instructions carefully to program your GARAGE STOP remote to your garage door opener. There are two primary methods depending on your opener's button type.

Video Guide: How to Program Garage Stop G3T-BX

Your browser does not support the video tag.

Video: A step-by-step guide demonstrating how to program the Garage Stop G3T-BX remote to a compatible garage door opener.

Programming with Learn Button (1995 to present)

1. **Step 1:** Press and then release the "Learn Code" button on the OPENER unit hanging in your garage. The LED on the opener will blink rapidly.
2. **Step 2:** Press the button you wish to program on the remote transmitter. The LED on the opener will stop blinking.
3. **Step 3:** Press the same button on the remote transmitter again. The LED on the opener will go out.
4. **Step 4:** Press the same button on the remote one more time. The garage door should open, indicating successful programming.

Programming with Program/Set Button (2010 to present)

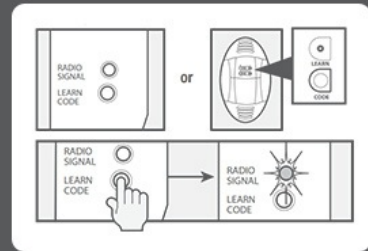
1. **Step 1:** Locate the Program/Set Button and the Indicator LED on the OPENER unit hanging in your garage.
2. **Step 2:** Hold the Program/Set Button until the LED turns blue, then release. The LED will then blink purple.
3. **Step 3:** Press the button you wish to program on the remote transmitter. The LED will stop blinking.
4. **Step 4:** Press the same button on the remote transmitter again. The LEDs will turn off after blinking blue.
5. **Step 5:** Press the same button on the remote one more time. The garage door should open, indicating successful programming.

***Repeat the steps above if you wish to program multiple remotes or a multi-button remote to multiple doors. If a remote*

loses its "program", repeat the steps above.

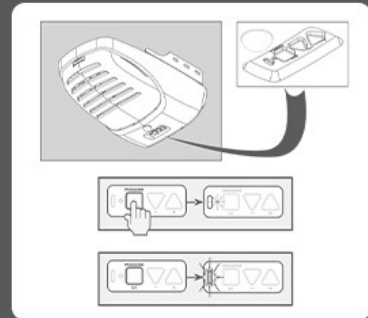
Openers with Learn Button (1995 to present)

- 1 Press then release the "Learn Code" button on the OPENER hanging in your garage (LED will blink rapidly).
- 2 Press then release the button you wish to program on the remote transmitter (LED will stop blinking).
- 3 Press then release the same button on the remote transmitter (the LED will go out).
- 4 Press the same button on the remote one more time. The garage door will open indicating successful programming.



Openers with Program/Set Button (2010 to present)

- 1 Locate the Program/Set Button and the indicator LED on the OPENER hanging in your garage.
- 2 Hold the Program/Set Button until the LED turns blue and then release. The LED will then blink purple.
- 3 Press then release the button you wish to program on the remote transmitter (the LED will stop blinking).
- 4 Press the release the same button on the remote transmitter (LEDs will turn off after blinking blue).
- 5 Press the same button on the remote one more time. The garage door will open indicating successful programming.



**Repeat the steps above if you wish to program multiple remotes (or a multi-button remote to multiple doors). If a remote loses its "program" repeat the steps above.

Image: A visual guide detailing the programming steps for both 'Learn Button' and 'Program/Set Button' garage door openers.

6. OPERATING INSTRUCTIONS

Once programmed, operating your GARAGE STOP remote is straightforward:

- **Opening/Closing Garage Door:** Press the desired programmed button on the remote to activate your garage door opener. The door will open or close accordingly.
- **Multiple Doors:** If you have programmed multiple buttons for different garage doors, simply press the corresponding button for the door you wish to operate.
- **Range:** For optimal performance, ensure you are within the 120-foot operating range of your garage door opener.

7. MAINTENANCE

Battery Replacement

The remote uses a CR2032 lithium battery. If the remote's indicator light does not illuminate or its range decreases significantly, it may be time to replace the battery.

1. **Step 1:** Open the remote case using a small coin or flat-head screwdriver. Insert it into the slot at the top of the remote and gently pry it open.
2. **Step 2:** Remove the old CR2032 battery. Note the polarity (+/-) before removal.
3. **Step 3:** Insert a new CR2032 lithium battery, ensuring the correct polarity.
4. **Step 4:** Align the components and snap the case closed until it clicks securely.

1 PROGRAM THE OPENER

1. **PRESS**  and **HOLD 5 seconds**
SEE BOTH Blue LEDs come ON
2. **RELEASE**
SEE round Blue LED come ON
3. **PRESS**  and **RELEASE**
SEE long Purple LED flashing
4. **PRESS remote and RELEASE** (the button you want to program.)
 SEE long Purple LED come steady ON
5. **PRESS and RELEASE remote button again**
 SEE both LEDs flash Blue and go OFF
6. **PRESS and RELEASE remote button a third time**
Programming is complete. This remote button can now be used to operate door opener. Repeat as necessary for other remotes or buttons on the same remote.

5 BATTERY REPLACEMENT

Replace remote battery with a CR 2032 coin cell battery.

1. Open the remote case using a washer or coin that fits into the slot at the top of the remote.
2. Replace battery. Match battery polarity with symbols inside battery housing.
3. Align components and snap case closed.



Image: A diagram illustrating the steps for replacing the battery in the remote control.

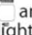


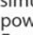
2 REMOTE OPERATION

- Point Remote at the garage door and press the button. Door will move.
- Press the Remote Button again and the door will stop.
- Press the Remote Button again and the door will move the opposite way. The door automatically stops at the end of the open or close cycle.

3 LOST OR STOLEN REMOTE

ALL Remote Codes will be erased from Opener (powerhead) memory.

These instructions are for openers with the type keypad shown below.

1. Press  and hold until both lights come ON blue. Release button.
2. Lights go out and Round BLUE light comes ON.
3. Press  again and see long purple LED flashing.
4. Press both  and  simultaneously on the powerhead and hold for 5 seconds.
5. Reprogram the Opener with the remaining Remote(s) (Repeat Section 2 for each remote).

Test remote operation. Remote should not activate door opener.

- Follow these instructions to erase remote codes for ALL other openers.
1. Press and HOLD the Learn Code button on the powerhead for 10 seconds or until Radio Signal LED indicator goes out.
 2. Reprogram the Opener with the remaining Remotes following the programming instructions for that powerhead.
 3. Reprogram the Opener with any Wireless Keypad and other access device using the instructions accompanying those devices.

GARAGE STOP

8. TROUBLESHOOTING

If you encounter issues with your GARAGE STOP remote, consider the following common solutions:

• Remote Not Programming:

- Ensure your garage door opener is compatible with the remote (check compatibility list in Section 4).
- Verify that you are pressing the correct "Learn" or "Program/Set" button on your garage door opener.
- Confirm that the remote's battery is properly installed and has sufficient charge.
- Ensure you are following the programming steps precisely as outlined in Section 5.

• Remote Not Activating Door:

- Check the remote's battery (see Section 7 for replacement).
- Ensure you are within the effective operating range (approximately 120 feet).
- Confirm that the remote is properly programmed to your opener. If unsure, re-program the remote (see Section 5).
- Check for any obstructions or interference between the remote and the garage door opener.

- **Erasing All Remotes from Opener Memory (Lost or Stolen Remote):**

To erase all remote codes from your opener's memory (useful if a remote is lost or stolen), follow these steps:

1. **Step 1:** Press and hold the Learn Code button on the opener for 10 seconds or until the Radio Signal LED indicator goes out. This will erase all previously programmed remotes.
2. **Step 2:** Reprogram any remaining remotes you wish to use by following the programming instructions in Section 5.

9. SPECIFICATIONS

Brand	GARAGE STOP
Model Number	56151-597
Package Dimensions	4.17 x 3.11 x 0.79 inches
Item Weight	2.89 ounces
Batteries	1 Lithium Metal battery required (CR2032, included)
Max Number of Supported Devices	3
Compatible Devices	Genie IntelliCode and Overhead Door CodeDodger Garage Door Openers (1997+)
Special Feature	Ergonomic

10. WARRANTY AND CUSTOMER SUPPORT

At GARAGE STOP, customer satisfaction is our primary focus. We are committed to providing high-quality, budget-friendly alternatives to OEM products. Each product undergoes thorough testing to ensure optimal quality and reliability.

If you are not entirely satisfied with your purchase or require assistance with programming, troubleshooting, or any other product-related inquiry, please do not hesitate to contact our customer support team for immediate assistance. We are here to help ensure your complete satisfaction.

For support, please visit the GARAGE STOP Store on Amazon or refer to the contact information provided with your product packaging.