



[Manuals.plus](#) /

> [PARLOS](#) /

> PARLOS Waterfall Widespread Bathroom Faucet 2 Handles with Metal Pop Up Drain & cUPC Faucet Supply Lines, Brushed Nickel, Demeter 1431802 1.2GPM Brushed Nickel

## PARLOS 1431802

# PARLOS Waterfall Widespread Bathroom Faucet Instruction Manual

Model: Demeter 1431802

## INTRODUCTION

This manual provides comprehensive instructions for the installation, operation, and maintenance of your PARLOS Waterfall Widespread Bathroom Faucet, Model Demeter 1431802. This 2-handle faucet features a brushed nickel finish, a waterfall spout design, and includes a metal pop-up drain and cUPC certified supply lines for a complete installation solution.

Designed for 3-hole widespread installations, this faucet offers precise control over water temperature and flow, ensuring a reliable and aesthetically pleasing addition to your bathroom.



Image: Complete PARLOS Waterfall Widespread Bathroom Faucet assembly, including the main spout, two handles, metal pop-up drain, and flexible supply lines.

## SAFETY INFORMATION

- Always turn off the main water supply before beginning any installation or maintenance work on the faucet.
- Wear appropriate personal protective equipment, such as safety glasses, during installation.
- Ensure all connections are secure and leak-free before restoring water supply.
- If you are unsure about any part of the installation process, consult a qualified plumber.
- Do not use harsh chemicals or abrasive cleaners on the faucet finish, as this may cause damage.

## PACKAGE CONTENTS

Verify that all components are present before beginning installation:

## Package Includes

- |                        |                                      |                                    |
|------------------------|--------------------------------------|------------------------------------|
| 1 Bathroom Sink Faucet | 2 Metal Pop up Drain (With Overflow) | 3 Spare Hot and Cold Indicator Dot |
| 4 Allen Key            | 5 Installation Manual                | 6 Quick-connect Hose               |
| 7 Faucet Supply Lines  |                                      |                                    |



Image: An exploded view diagram illustrating all parts included in the faucet package, such as the faucet body, handles, drain assembly, hoses, and tools.

1. Bathroom Sink Faucet (Spout and two handles)
2. Metal Pop-up Drain (with Overflow)
3. Spare Hot and Cold Indicator Dots
4. Allen Key
5. Installation Manual (PDF)
6. Quick-connect Hose
7. Faucet Supply Lines (2)

**INCLUDE**

**Metal POP-UP DRAIN & cUPC Certified Supply Lines**

**Detachable  
Anti-clogging  
Brass Strainer**

**For Sink  
With Overflow Hole**

**304 Stainless Steel**

Liability  
Insurance Coverage

Nylon Braided  
Exterior Protects  
Against Chemical  
Corrosion

PEX Tubing  
Safe For Drinking  
Water

cUPC Certified

Image: Detailed view of the metal pop-up drain with its detachable anti-clogging brass strainer and the cUPC certified nylon braided exterior supply lines.

**SPECIFICATIONS**

# DIMENSION

**Overall Height: 5.00 Inch (127mm)**  
**Spout Height: 3.70 Inch (94mm)**  
**Spout Reach: 4.60 Inch (117mm)**



Image: Technical drawing displaying the overall height, spout height, spout reach, and other critical dimensions of the faucet and drain assembly, along with recommended hole sizes and distances for installation.

Feature	Detail
Brand	PARLOS
Model Name	Demeter
Item Model Number	1431802
Recommended Uses	Bathroom
Mounting Type	Deck Mount
Installation Type	Widespread (3-Hole)
Hole Size Requirement	32-35mm (1.25-1.37 inches)

<b>Feature</b>	<b>Detail</b>
Finish Type	Brushed Nickel
Material	Metal (Solid Brass Construction)
Number of Handles	2
Spout Design	Waterfall
Special Feature	Metal Pop Up Drain
Maximum Flow Rate	1.2 Gallons Per Minute (GPM)
Spout Height	3.70 Inches (94mm)
Spout Reach	4.60 Inches (117mm)
Overall Height	5.00 Inches (127mm)
Item Weight	4.82 pounds
Certification	NSF Certification, cUPC Certified

**Max. Flow rate: 1.5GPM (5.6L/min at 60PSI)**



### Waterfall Spout Design

Delivers a smooth waterfall ambiance without splashing.

### Solid Brass Construction

Resist corrosion, Lead-free, Ensure long-lasting performance.



**HENT Cartridge** Rigorously tested to ensure leak-free performance.

Image: Visual representation of key features including the 1.2 GPM flow rate, NSF, Pb-Free, and cUPC certifications, solid brass construction, waterfall spout design, and HENT cartridge for leak-free performance.

## INSTALLATION

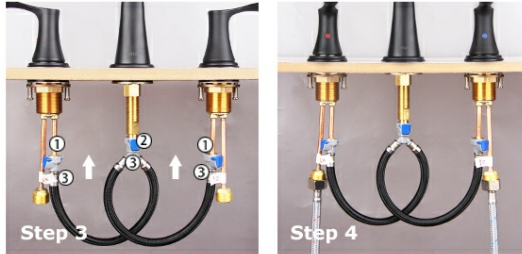
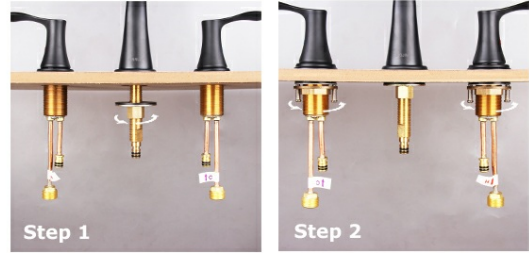
For detailed step-by-step instructions, please refer to the official Installation Manual PDF [Download Installation Manual \(PDF\)](#).

Below is a summary of the quick connection process:

## Quick Connection by the Innovated Hose.

**Step 1:** Place the Spout in center hole of sink.  
Secure it with washers and lock nut.

**Step 2:** Attach each handle with a washer and a threaded ring.  
(Ensure the handles are in the OFF position Align the handles as shown.)



**Step 3:** Align tabs ① and tabs ② on quick connects ③. Push quick connects firmly upward and snap onto receiving tube tab ①.

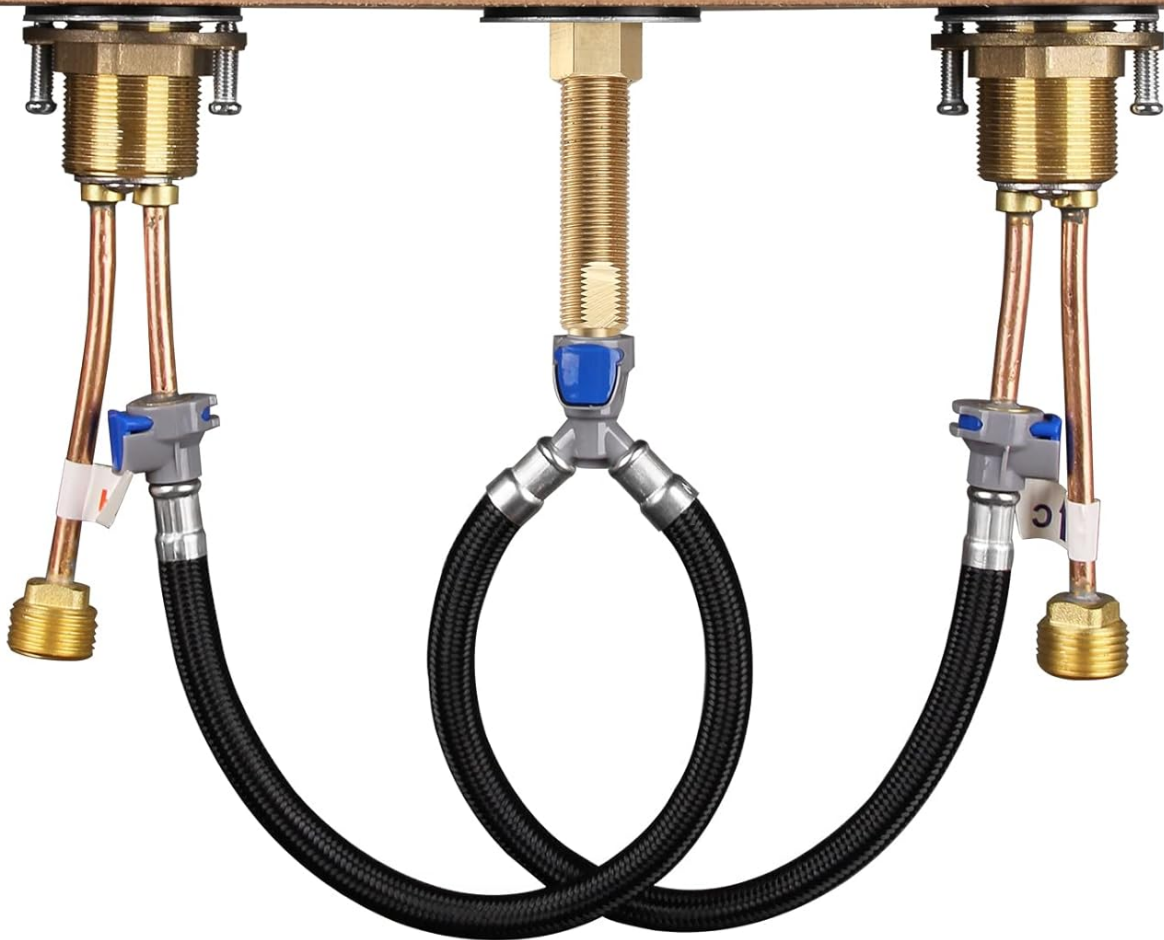
**Step 4:** Connect To Water Supplies.  
Check all connections for leaks.

Image: Step-by-step visual guide for connecting the faucet components using the quick-connect hose system.

1. **Step 1: Place the Spout.** Insert the faucet spout into the center hole of your sink. Secure it from underneath with the provided washers and lock nut.
2. **Step 2: Attach Handles.** Attach each handle to its respective side hole. Secure each handle with a washer and a threaded ring from underneath. Ensure the handles are in the OFF position and aligned correctly as shown in the diagram.
3. **Step 3: Align Quick Connects.** Align the tabs on the quick-connect hose with the receiving tube tabs on the faucet components. Push the quick connects firmly upward until they snap securely into place.
4. **Step 4: Connect to Water Supplies.** Connect the faucet supply lines to your hot and cold water supply valves. Ensure all connections are tightened securely to prevent leaks. After connecting, slowly turn on the water supply and check all connections for any signs of leakage.

## COMES WITH Y MIXER HOSE

High density nylon braided exterior for durability



**Design for Quick Connection  
Easy to install without a plumber**

Image: Close-up view of the high-density nylon braided Y mixer hose designed for quick and easy connection, facilitating installation without specialized plumbing tools.

### OPERATION

The PARLOS Waterfall Widespread Bathroom Faucet features two distinct handles for controlling water flow and temperature:

- The **left handle** controls the hot water supply. Rotate it to increase or decrease the hot water flow.
- The **right handle** controls the cold water supply. Rotate it to increase or decrease the cold water flow.
- Adjust both handles simultaneously to achieve your desired water temperature and flow rate.
- The waterfall spout design provides a smooth, laminar flow of water, minimizing splashing.
- The metal pop-up drain is operated by pressing down on the top cap to close the drain and pressing again to open it.

### MAINTENANCE

Proper care and maintenance will ensure the longevity and appearance of your PARLOS faucet:

- **Cleaning:** Clean the faucet regularly with a soft, damp cloth. For stubborn spots, use a mild soap and water solution. Rinse thoroughly with clean water and dry with a soft cloth to prevent water spots.
- **Avoid Harsh Cleaners:** Do not use abrasive cleaners, harsh chemicals, ammonia-based products, or scouring pads, as these can damage the brushed nickel finish and internal components.
- **Drain Maintenance:** Periodically remove the detachable anti-clogging brass strainer from the pop-up drain to clean any accumulated debris.
- **Aerator (if applicable):** While this faucet features a waterfall spout, if any flow issues arise, ensure the spout opening is clear of mineral deposits.

## TROUBLESHOOTING

Problem	Possible Cause	Solution
<b>Low Water Flow</b>	Partially closed supply valves; debris in supply lines or spout.	Ensure supply valves are fully open. Check supply lines for kinks. Clean any debris from the spout opening.
<b>Leaks at Connections</b>	Loose connections; damaged washers/seals.	Tighten all connections. If leaks persist, check and replace washers or seals as needed. Ensure quick-connects are fully seated.
<b>Water Temperature Issues</b>	Incorrect hot/cold supply connections; issues with water heater.	Verify hot and cold supply lines are connected correctly. Check your water heater settings.
<b>Drain Not Sealing</b>	Debris preventing seal; improper installation of drain.	Clean any debris from the drain stopper and basin. Re-check drain installation to ensure proper seating and sealing.

If troubleshooting steps do not resolve the issue, please contact PARLOS customer support.

## WARRANTY INFORMATION

The PARLOS Waterfall Widespread Bathroom Faucet (Model 1431802) comes with a limited warranty. For specific terms and conditions of the warranty, please refer to the complete installation manual or contact PARLOS customer support directly.

This warranty typically covers manufacturing defects in materials and workmanship under normal use and service. Proof of purchase may be required for warranty claims.

## CUSTOMER SUPPORT

For further assistance, technical support, or warranty inquiries, please contact PARLOS customer service.

**Manufacturer:** PARLOS HOME FURNISHING CO.,LTD

**Online Store:** Visit the official PARLOS Store on Amazon for more products and information:[PARLOS Amazon Store](#)

**Installation Manual:** For a comprehensive guide, download the PDF manual:[Installation Manual PDF](#)

