

QFX BT-41-FL

QFX BT-41-Flamingo Bluetooth Speaker User Manual

Model: BT-41-FL

1. INTRODUCTION

Thank you for purchasing the QFX BT-41-Flamingo Bluetooth Speaker. This portable speaker offers high-quality audio streaming, True Wireless System (TWS) functionality for stereo sound, hands-free calling, and multiple playback options including Bluetooth, USB, TF card, and FM radio. Please read this manual carefully to ensure proper use and to maximize your enjoyment of the product.

2. PACKAGE CONTENTS

Please check the box for the following items:

- QFX BT-41-Flamingo Bluetooth Speaker
- USB Charging Cable
- AUX Cable
- User Manual (this document)

3. PRODUCT OVERVIEW

Familiarize yourself with the speaker's components and controls.

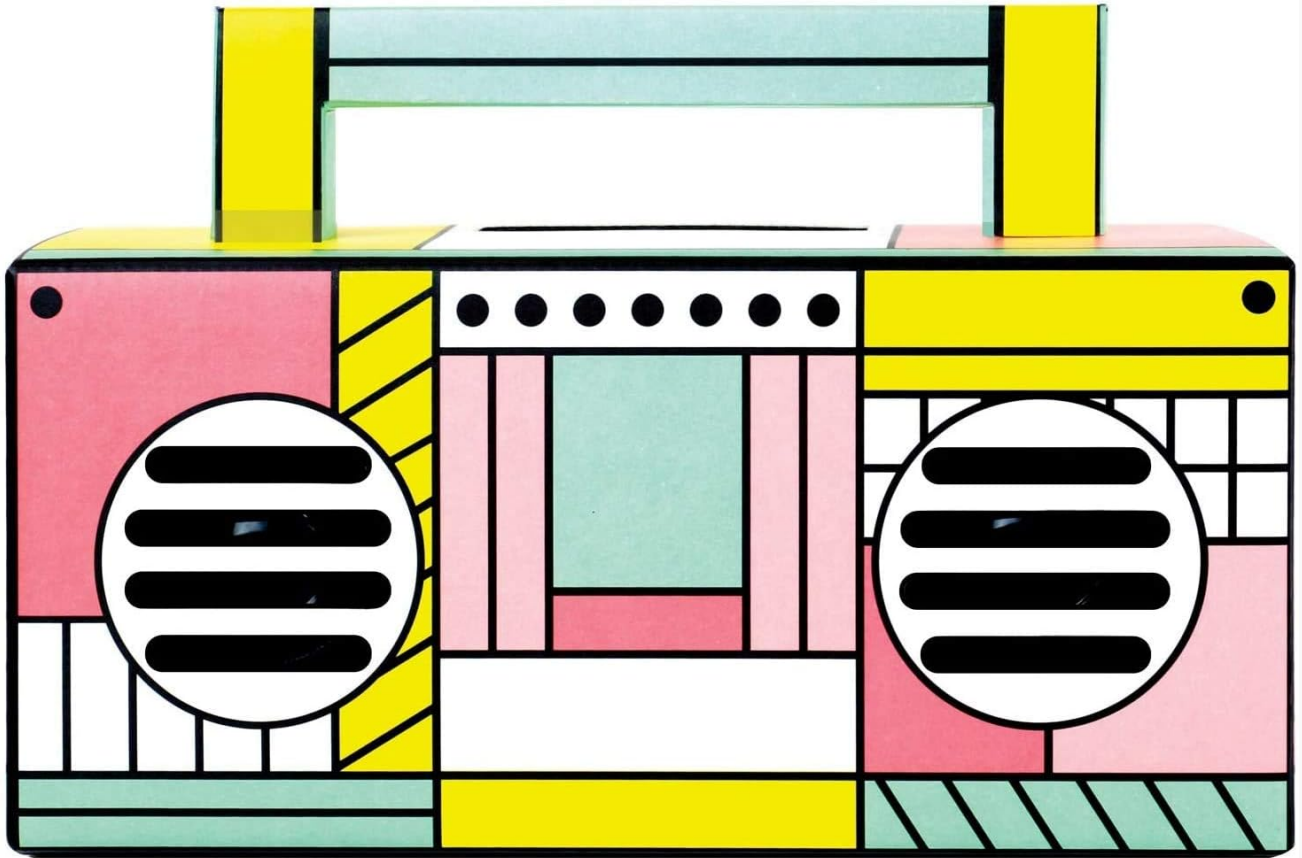


Figure 3.1: Front View - This image displays the front of the QFX BT-41-Flamingo speaker, highlighting its distinctive pink, yellow, green, and blue geometric pattern. The two circular speaker grilles are prominent on either side, and a handle is visible at the top.



Figure 3.2: Angled Top View - This image provides an angled view of the speaker from the top-front, revealing the control panel located on the top surface. The carry handle is also clearly visible, extending across the top.



Figure 3.3: Rear Port Panel - This image focuses on the rear of the speaker, detailing the various input ports. From left to right, these include the DC 5V charging port, a USB port for media playback, a TF (Micro-SD) card slot, and an AUX input jack.

4. SETUP

4.1 Charging the Speaker

1. Connect the supplied USB charging cable to the DC 5V port on the back of the speaker.
2. Connect the other end of the USB cable to a USB power adapter (not included) or a computer's USB port.
3. The charging indicator light will illuminate. Once fully charged, the light may change color or turn off, depending on the unit.
4. A full charge provides several hours of playback.

4.2 Powering On/Off

- To power on, press and hold the Power button (usually located on the top panel) until the speaker activates.
- To power off, press and hold the Power button again until the speaker shuts down.

5. OPERATING INSTRUCTIONS

5.1 Bluetooth Pairing

1. Power on the speaker. It will automatically enter Bluetooth pairing mode, indicated by a flashing LED light and an audible prompt.
2. Enable Bluetooth on your smartphone or other Bluetooth-enabled device.
3. Search for available Bluetooth devices. Select "QFX BT-41" from the list.
4. Once paired, the speaker will emit an audible confirmation, and the LED light will stop flashing.
5. You can now play audio from your device through the speaker.

5.2 True Wireless System (TWS) Pairing

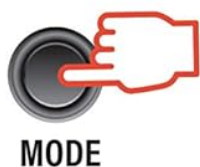
TWS allows two BT-41 speakers to connect wirelessly for a stereo sound experience. You will need two QFX BT-41 speakers for this feature.



CONNECT 2

PAIR 2 BT-41

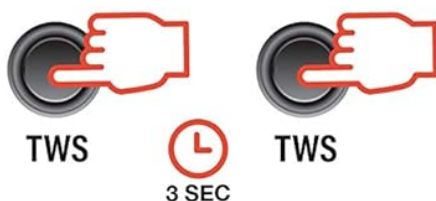
STEP 1



BLUETOOTH

Push the Mode Button on both speakers until speakers are in Bluetooth Mode. Screen will display the word "Blue"

STEP 2



When both speakers are in Bluetooth mode, push and hold the TWS button for 3 seconds. You will hear a beep. Next time you put both speakers in Bluetooth mode at the same time, speakers will connect automatically.

STEP 3

On your device, turn your Bluetooth settings "ON", you will then select "QFX BT-41". Enjoy TWS (True Wireless Stereo) sound from your phone via Bluetooth!



Figure 5.1: TWS Pairing Guide - This diagram visually explains the three steps to connect two BT-41 speakers in True Wireless Stereo mode. It shows pressing the Mode button to enter Bluetooth, then holding the TWS button on both speakers, and finally connecting via a smartphone's Bluetooth settings.

1. **Step 1:** Power on both BT-41 speakers. Press the **Mode** button on each speaker until they are both in Bluetooth mode. The display on each speaker should show "Blue".
2. **Step 2:** With both speakers in Bluetooth mode, press and hold the **TWS** button on *one* of the speakers for approximately 3 seconds. You will hear a beep. Then, press and hold the **TWS** button on the *second* speaker for 3 seconds. The speakers will automatically connect to each other.
3. **Step 3:** On your Bluetooth-enabled device, go to your Bluetooth settings. Search for and select "QFX BT-41". Once connected, you will enjoy True Wireless Stereo sound from your device.

5.3 USB/TF Card Playback

1. Insert a USB flash drive or TF (Micro-SD) card into the corresponding port on the speaker.
2. The speaker will automatically detect the storage device and begin playing audio files.
3. Use the playback controls (Play/Pause, Next/Previous Track) on the speaker to manage your music.

5.4 FM Radio

1. Press the **Mode** button to switch to FM radio mode.
2. Press and hold the Play/Pause button to automatically scan and save available FM stations.
3. Use the Next/Previous Track buttons to navigate between saved stations.

5.5 AUX Input

1. Connect one end of the supplied AUX cable to the AUX input port on the speaker.
2. Connect the other end of the AUX cable to the headphone jack or audio output of your external audio device.
3. Press the **Mode** button to switch to AUX input mode.
4. Control playback and volume from your external device.

5.6 Hands-Free Calling

When connected via Bluetooth to a smartphone:

- To answer an incoming call, press the Play/Pause button.
- To end a call, press the Play/Pause button again.
- The built-in microphone allows for clear communication.

6. MAINTENANCE

6.1 Cleaning

- Ensure the speaker is powered off and disconnected from any power source before cleaning.
- Use a soft, dry, lint-free cloth to wipe the exterior surfaces of the speaker.
- Do not use abrasive cleaners, waxes, or solvents as they may damage the finish.
- Avoid getting moisture into any openings.

6.2 Storage

- Store the speaker in a cool, dry place away from direct sunlight and extreme temperatures.
- If storing for an extended period, charge the battery periodically (e.g., every 3-6 months) to maintain battery health.

7. TROUBLESHOOTING

If you encounter issues with your speaker, refer to the following common problems and solutions:

- **No Power:**

Ensure the speaker is fully charged. Connect the USB charging cable and allow it to charge for at least 30 minutes before attempting to power on again.

- **No Sound:**

Check the volume level on both the speaker and your connected device. Ensure the correct input mode (Bluetooth, AUX, USB/TF, FM) is selected. If using Bluetooth, ensure the device is properly paired.

- **Bluetooth Not Connecting:**

Make sure the speaker is in Bluetooth pairing mode. Turn off Bluetooth on your device and then turn it back on. Forget "QFX BT-41" from your device's Bluetooth list and attempt to re-pair. Ensure no other devices are currently connected to the speaker.

- **TWS Pairing Fails:**

Ensure both speakers are in Bluetooth mode before attempting TWS pairing. Make sure you are pressing and holding the TWS button on both speakers as instructed. Try powering both speakers off and on again, then repeat the TWS pairing steps.

- **Poor FM Reception:**

Relocate the speaker to an area with better signal. Extend the AUX cable (if connected) as it can sometimes act as an antenna.

8. SPECIFICATIONS

Feature	Specification
Model Name	QFX
Item Model Number	BT-41-FL
Speaker Type	Multimedia
Special Feature	Radio
Recommended Uses	Music
Compatible Devices	Smartphone
Subwoofer Diameter	2 Inches
Surround Sound Channel Configuration	2.0
Color	Pink Flamingo
Product Dimensions (D x W x H)	7.83" x 3.5" x 3.66"
Item Weight	1.4 Pounds (approximately 0.63 kg)
Waterproof	No
Number of Items	1
Speaker Size	2 Inches
Power Source	Battery Powered
Battery Type	1 Lithium Ion battery (included)
UPC	606540039236
Manufacturer	QFX
Speaker Maximum Output Power	10 Watts
Connectivity Technology	Bluetooth, USB
Audio Output Mode	Stereo
Mounting Type	Freestanding, Plug Mount

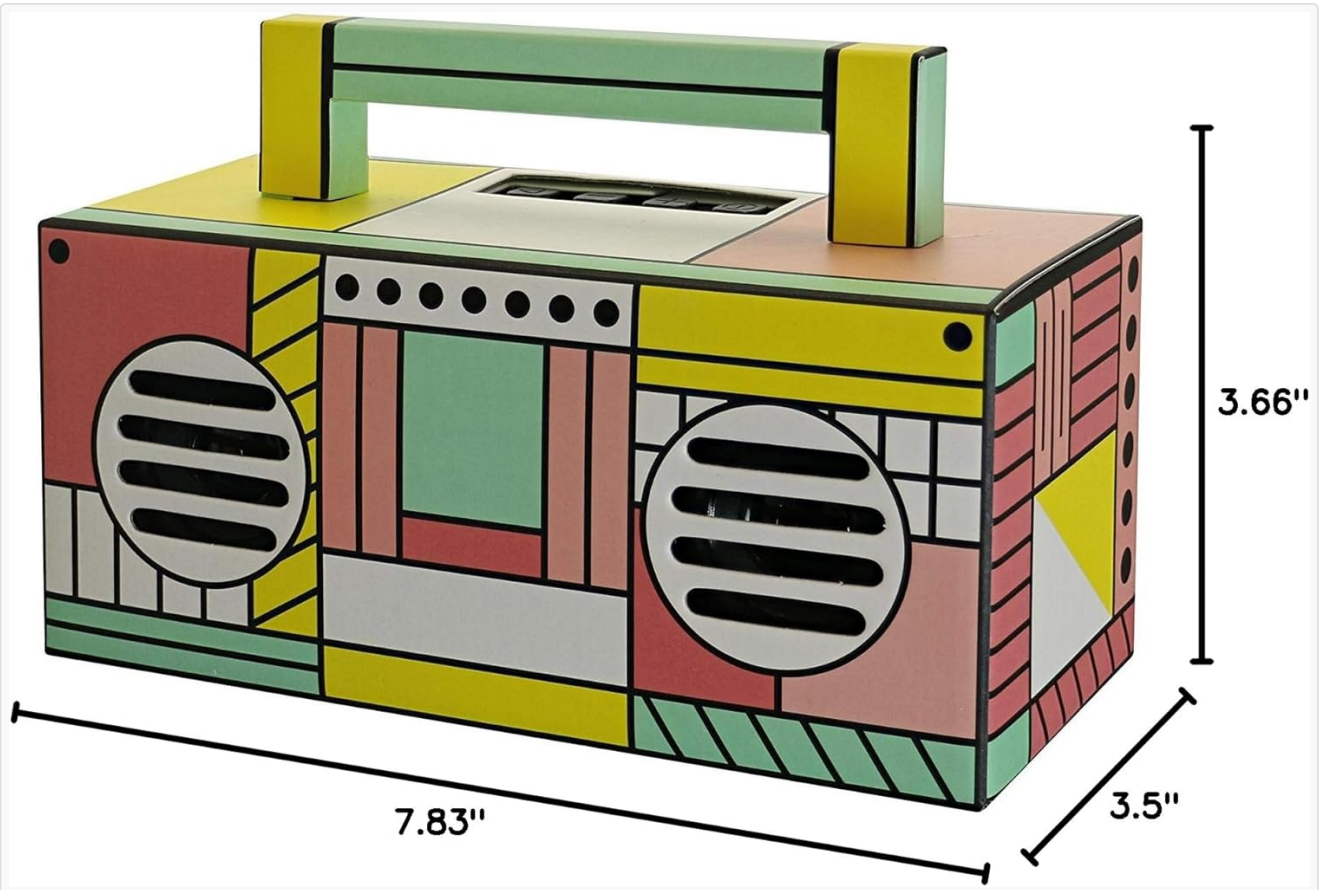


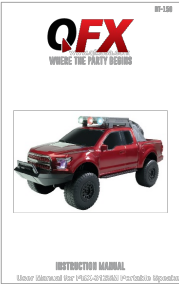


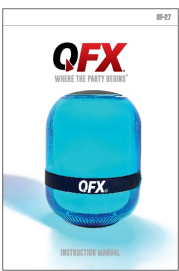

Figure 8.1: Product Dimensions - This image provides a clear visual representation of the speaker's physical dimensions, indicating a depth of 7.83 inches, a width of 3.5 inches, and a height of 3.66 inches.

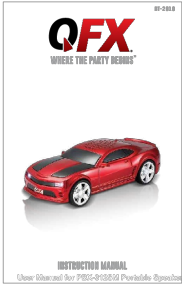
9. WARRANTY AND SUPPORT

For warranty information and customer support, please refer to the warranty card included with your product or visit the official QFX website. Keep your purchase receipt as proof of purchase for any warranty claims.

© 2024 QFX. All rights reserved.

Related Documents - BT-41-FL

 <p>The image shows the cover of the instruction manual for the QFX BT-150 Bluetooth speaker. It features the QFX logo at the top, the slogan 'WHERE THE PARTY BEGINS', and a photograph of a red pickup truck. Below the photo, it says 'INSTRUCTION MANUAL' and 'User Manual for QFX BT-150 Bluetooth Speaker'.</p>	<p>QFX BT-150 Bluetooth Speaker: Instruction Manual & Features</p> <p>Get detailed instructions for your QFX BT-150 Bluetooth speaker, including control panel functions, TWS pairing, Bluetooth connectivity, safety warnings, and warranty information.</p>
 <p>The image shows the cover of the instruction manual for the QFX BT-ZX35 portable Bluetooth speaker. It features the QFX logo, the slogan 'WHERE THE PARTY BEGINS', and a photograph of the speaker with colorful LED lights. Below the photo, it says 'INSTRUCTION MANUAL'.</p>	<p>QFX BT-ZX35 Portable Bluetooth Speaker: Instruction Manual & Warranty</p> <p>Comprehensive instruction manual and limited warranty policy for the QFX BT-ZX35 portable Bluetooth speaker. Learn how to use controls, pair devices, utilize TWS, FM, and AUX modes, and understand warranty terms.</p>
 <p>The image shows the cover of the instruction manual for the QFX BT-14 portable Bluetooth speaker. It features the QFX logo, the slogan 'WHERE THE PARTY BEGINS', and a photograph of the speaker. Below the photo, it says 'INSTRUCTION MANUAL' and 'User Manual for QFX BT-14 Portable Speaker'.</p>	<p>QFX BT-14 Portable Bluetooth Speaker: Instruction Manual, Features, and Warranty</p> <p>Comprehensive instruction manual for the QFX BT-14 portable Bluetooth speaker. Learn about controls, TWS pairing, Bluetooth, FM radio, safety, and warranty information from QFX.</p>
 <p>The image shows the cover of the instruction manual for the QFX BT-27 portable Bluetooth speaker. It features the QFX logo, the slogan 'WHERE THE PARTY BEGINS', and a photograph of the blue speaker. Below the photo, it says 'INSTRUCTION MANUAL'.</p>	<p>QFX BT-27 Portable Bluetooth Speaker Instruction Manual and Warranty</p> <p>Comprehensive instruction manual for the QFX BT-27 portable Bluetooth speaker. Learn how to set up, use Bluetooth, FM radio, USB playback, True Wireless Stereo (TWS), charging, and LED lights. Includes important safety warnings and the QFX limited product warranty policy.</p>
 <p>The image shows the cover of the user manual for the QFX BT-89 portable speaker. It features the QFX logo, the website 'www.qfxusa.com', and a photograph of the speaker. Below the photo, it says 'BT-89' and 'User Manual for BT-89 Portable Speaker'.</p>	<p>QFX BT-89 Portable Speaker User Manual</p> <p>User manual for the QFX BT-89 Portable Speaker, detailing control panel functions, power source, charging, volume, playback, mode selection, and Bluetooth/TWS pairing.</p>



[QFX BT-2010 Portable Bluetooth Speaker: Instruction Manual and Warranty](#)

User guide for the QFX BT-2010 retro car portable Bluetooth speaker. Includes setup, features like TWS and FM radio, charging instructions, safety precautions, and detailed warranty information from QFX.