

Rugged Radios RM60-V-BLK

Rugged Radios RM60-V Mobile VHF Two-Way Radio

Model: RM60-V-BLK | Brand: Rugged Radios

INTRODUCTION

This manual provides comprehensive instructions for the proper installation, operation, and maintenance of your Rugged Radios RM60-V 60-watt VHF mobile two-way radio. Please read this manual thoroughly before using the device to ensure safe and optimal performance. Keep this manual for future reference.

SAFETY INFORMATION

- **Power Supply:** Use only the specified power supply for this radio. Incorrect voltage can damage the unit and void the warranty.
- **Antenna:** Connect a properly tuned antenna before transmitting. Transmitting without an antenna or with a poorly matched antenna can damage the radio's final amplifier.
- **Hearing Protection:** Prolonged exposure to loud audio from the radio may cause hearing damage. Adjust the volume to a comfortable level.
- **Installation:** Ensure the radio is securely mounted in a stable location, away from excessive heat, dust, and moisture.
- **Vehicle Operation:** Do not operate the radio in a way that distracts you from driving. Prioritize safe vehicle operation.

PACKAGE CONTENTS

Verify that all items listed below are included in your package:

- Rugged Radios RM60-V Mobile VHF Radio Unit
- Hand Microphone
- Mounting Bracket
- Mounting Hardware (screws, washers, nuts)

- 6-foot Power Cable with In-line Fuse



Image 1: The Rugged Radios RM60-V mobile VHF radio unit with its attached hand microphone. The radio features a digital display and various control buttons and knobs.

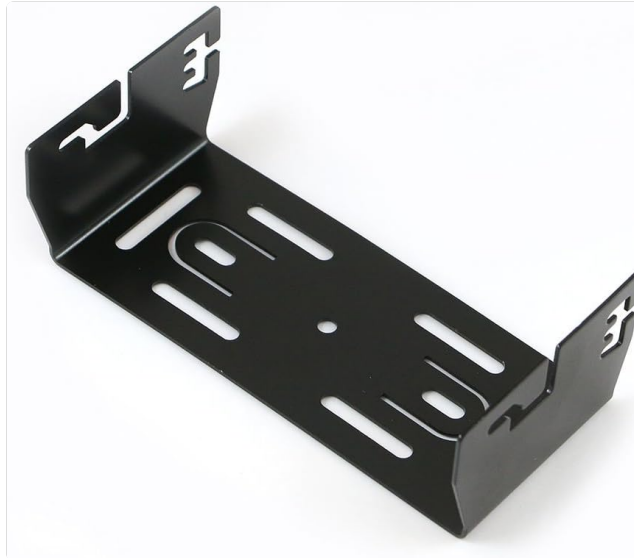


Image 2: A black metal mounting bracket designed for securing the radio unit. It features multiple slots and holes for versatile installation.



Image 3: A collection of screws, washers, nuts, and two glass fuses, which are included for mounting the radio and for power connection.

PRODUCT OVERVIEW

The RM60-V is a robust 60-watt VHF mobile radio designed for clear and reliable communication over distances of 20 to 30 miles. It features a user-friendly interface with a clear display and intuitive controls.

Main Components:

- **Radio Unit:** The main transceiver body, housing the display, controls, and internal circuitry.
- **Hand Microphone:** Used for transmitting and receiving audio, typically with a push-to-talk (PTT) button.
- **Mounting Bracket:** For secure installation in a vehicle or other desired location.
- **Power Cable:** Connects the radio to a 12V DC power source.

Refer to *Image 1* for a visual representation of the radio unit and hand microphone.

SETUP

1. Installation

1. Choose a suitable, secure location for mounting the radio, ensuring it does not obstruct airbags or driver visibility.
2. Use the provided mounting bracket (*Image 2*) and hardware (*Image 3*) to firmly attach the radio unit.
3. Connect your VHF antenna (sold separately) to the antenna port on the rear of the radio. Ensure a good connection.

2. Power Connection

1. Connect the red wire of the 6-foot power cable to the positive (+) terminal of your vehicle's 12V DC power source.
2. Connect the black wire of the power cable to the negative (-) terminal or a suitable ground point.
3. Ensure the in-line fuse is properly installed in the power cable for circuit protection.
4. Plug the power cable connector into the radio's power input port.

OPERATING

1. Basic Operation

- **Power On/Off:** Press and hold the power button (or rotate the volume knob, depending on model variation) to turn the radio on or off.
- **Volume Control:** Rotate the volume knob to adjust the audio output level.
- **Channel Selection:** Use the channel up/down buttons or knob to select one of the 16 available channels.
- **Transmitting:** Press and hold the Push-To-Talk (PTT) button on the hand microphone to transmit. Release to receive.

2. Advanced Features

- **Channel Scan:** Activate the channel scan function to automatically cycle through active channels. Refer to your radio's specific button layout for scan activation.
- **Adjustable Squelch:** The squelch function mutes the speaker when no signal is present, eliminating background noise. Adjust the squelch level to your preference to block out weak signals or noise.
- **Adjustable Power Level:** The radio supports adjustable power output. You can select between high and low power settings to conserve battery life or extend range as needed.

- **Tone Code Scan (DCS/CTCSS):** The radio is compatible with DCS (Digital Coded Squelch) and CTCSS (Continuous Tone-Coded Squelch System) tone codes. Use this feature to filter out unwanted conversations or to access repeaters that require a specific tone. The radio can scan for active tone codes.

MAINTENANCE

- **Cleaning:** Use a soft, damp cloth to clean the radio's exterior. Do not use harsh chemicals or abrasive cleaners.
- **Connections:** Periodically check all cable connections (power, antenna, microphone) to ensure they are secure and free from corrosion.
- **Fuse Replacement:** If the radio does not power on, check the in-line fuse in the power cable. Replace it with a fuse of the same rating if blown (refer to *Image 3* for fuse type).
- **Storage:** When not in use for extended periods, store the radio in a cool, dry place, away from direct sunlight and extreme temperatures.

TROUBLESHOOTING

Problem	Possible Cause	Solution
Radio does not power on.	No power connection; Blown fuse; Faulty power cable.	Check power cable connection; Replace in-line fuse; Test power cable.
No audio or distorted audio.	Volume too low; Squelch set too high; Loose microphone connection; Speaker issue.	Increase volume; Adjust squelch level; Reconnect microphone; Check speaker.
Cannot transmit or receive.	Incorrect channel/frequency; Antenna not connected or faulty; PTT button issue; Radio fault.	Verify channel; Check antenna connection; Test PTT button; Contact support if issue persists.
Poor range or intermittent signal.	Antenna issue; Low power setting; Obstructions; Environmental factors.	Check antenna tuning/placement; Set power to high; Move to clear area; Consider external factors.

SPECIFICATIONS

Feature	Detail
Brand	Rugged Radios
Model Number	RM60-V-BLK
Manufacturer	Rugged Radios
Tuner Technology	VHF
Color	Black
Channel Quantity	16
Maximum Talk Range	30 Miles

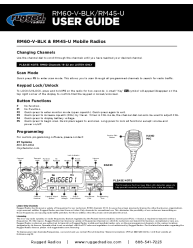


Feature	Detail
Batteries Included	No
Batteries Required	No
Package Dimensions	35.6 x 7.2 x 3.3 cm; 1.82 kg
ASIN	B07XWQLQJ1
First Available Date	November 24, 2019

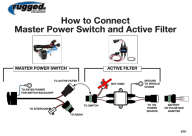

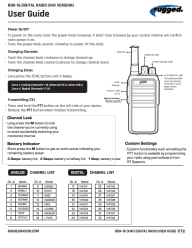
WARRANTY AND SUPPORT

For detailed warranty information, please refer to the documentation included with your purchase or visit the official Rugged Radios website. If you encounter any issues not covered in this manual or require further assistance, please contact Rugged Radios customer support. You can typically find support contact information on the manufacturer's website or through your point of purchase.

© 2023 Rugged Radios. All rights reserved.

Related Documents - RM60-V-BLK

	<p>Rugged Radios RM60-V-BLK/RM45-U Mobile Radios User Guide</p> <p>Comprehensive user guide for Rugged Radios RM60-V-BLK and RM45-U mobile radios, covering channel selection, scan mode, keypad lock, button functions, programming, and licensing information.</p>
	<p>Rugged Radios RH-5R and RH5X 5-Watt Handheld Radios Common Channels</p> <p>Reference guide for common channels, frequencies, and tones for Rugged Radios RH-5R and RH5X 5-Watt Handheld Radios. Includes channel names and associated frequencies for various uses.</p>
	<p>RH-5R 5-Watt Radio User Guide - Rugged Radios</p> <p>User guide for the Rugged Radios RH-5R 5-Watt Radio (P.N. RH5R-V2), covering channel management, frequency entry, dual display, keypad lock, FM radio, and tone codes.</p>

 <p>How to Connect Master Power Switch and Active Filter</p>	<p>How to Connect Rugged Radios Master Power Switch and Active Filter</p> <p>Installation guide for connecting the Rugged Radios Master Power Switch and Active Filter, detailing wiring for intercom, radio, power source, and battery adapter.</p>
 <p>GMR45 USER MANUAL</p>	<p>Rugged Radios GMR45 User Manual: Installation, Operation, and Specifications</p> <p>Comprehensive user manual for the Rugged Radios GMR45 mobile GMRS radio. Covers installation, operation, features, troubleshooting, and technical specifications.</p>
 <p>RDH-16 DIGITAL RADIO (VHF VERSION) User Guide</p>	<p>Rugged Radios RDH-16 Digital Radio (VHF Version) User Guide</p> <p>User guide for the Rugged Radios RDH-16 Digital Radio (VHF Version), covering power on/off, channel and zone changing, transmitting, channel lock, battery indicator, and custom settings.</p>