



Manuals.plus /

› **LELO** /

› LELO SONA 2 Cruise Clitoral Vibrator Instruction Manual

## LELO SONA 2 Cruise

# LELO SONA 2 Cruise Instruction Manual

Model: SONA 2 Cruise

## INTRODUCTION

---

The LELO SONA 2 Cruise is an innovative clitoral vibrator designed to provide unique pleasure through sonic waves. This manual will guide you through the setup, operation, maintenance, and troubleshooting of your device, ensuring you get the most out of its advanced features.

## WHAT'S IN THE BOX

---

Your LELO SONA 2 Cruise package includes the following items:

- LELO SONA 2 Cruise device
- USB charging cable
- Satin storage pouch
- Warranty registration card
- Detailed instruction manual (this document)
- Personal Moisturizer sachet (5 ml / 0.17 fl. oz.)

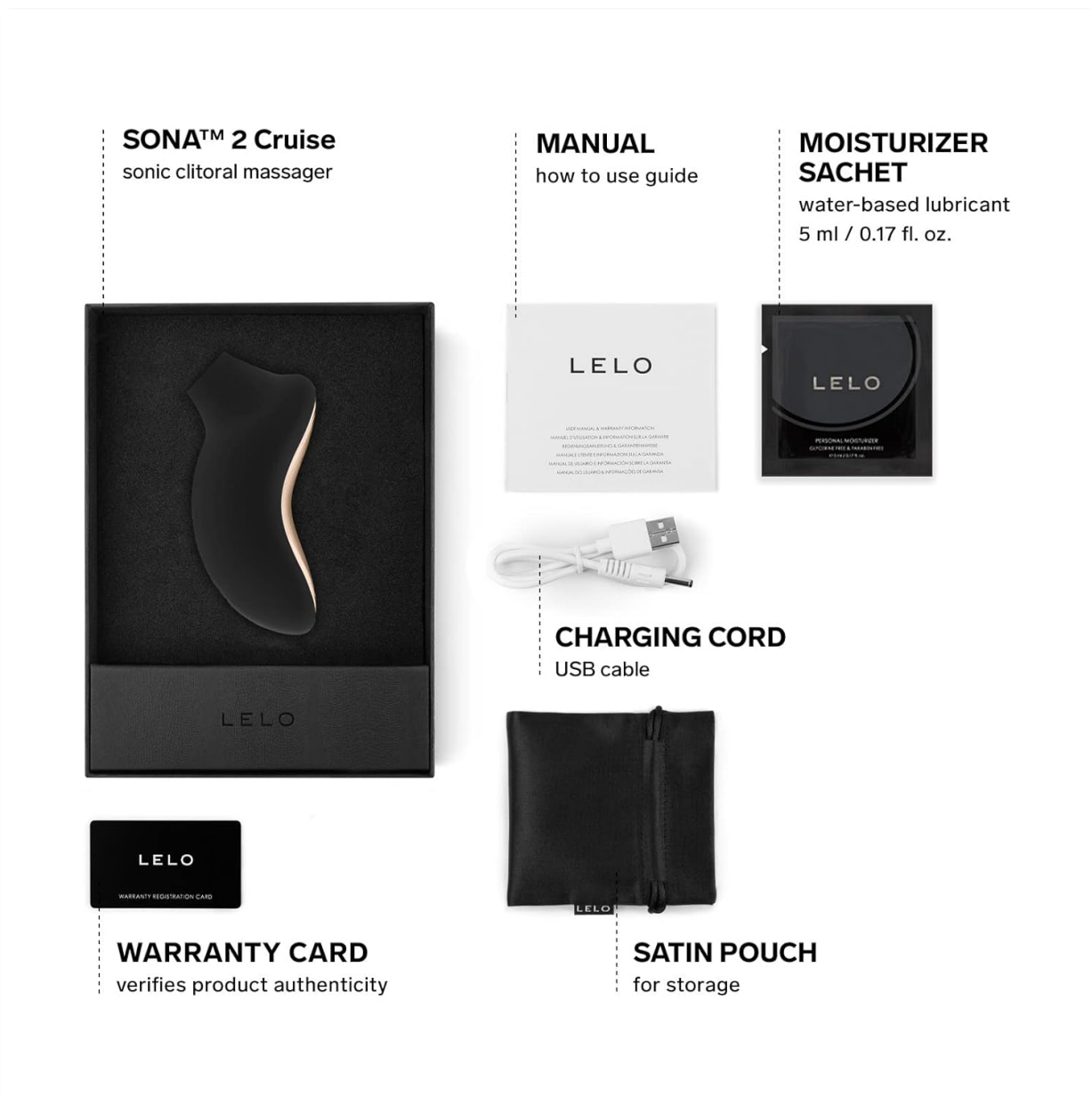
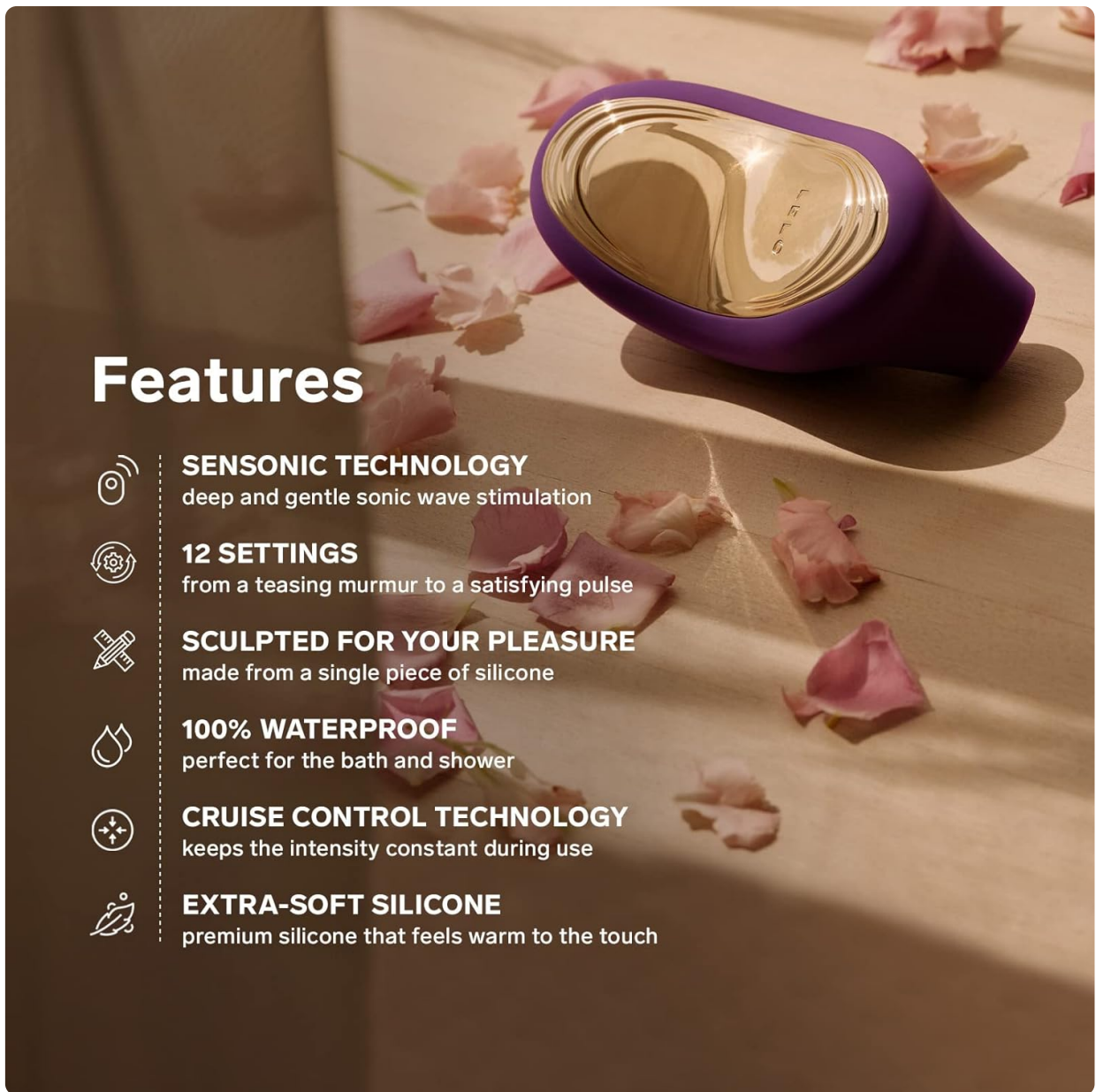


Image: The LELO SONA 2 Cruise device, USB charging cable, satin pouch, warranty card, and instruction manual, along with a moisturizer sachet, laid out from the product box.

## FEATURES

The LELO SONA 2 Cruise is equipped with advanced features for an unparalleled experience:

- **Sonic Wave Clitoral Vibrator:** Caresses your clitoris with gentle sonic waves without direct touch, offering a new sensation.
- **Cruise Control Option:** Maintains consistent intensity even when pressed firmly against the body.
- **Discreet & Compact:** Designed with a broader surface area for comprehensive stimulation and easy handling.
- **12 Settings:** Offers a wide range of intensities to find your preferred stimulation.
- **Waterproof & USB Rechargeable:** IPX7 certified for safe use in water and convenient recharging.
- **Extra-Soft Silicone:** Premium silicone material that feels warm and comfortable to the touch.



# Features



**SENSONIC TECHNOLOGY**  
deep and gentle sonic wave stimulation



**12 SETTINGS**  
from a teasing murmur to a satisfying pulse



**SCULPTED FOR YOUR PLEASURE**  
made from a single piece of silicone



**100% WATERPROOF**  
perfect for the bath and shower



**CRUISE CONTROL TECHNOLOGY**  
keeps the intensity constant during use



**EXTRA-SOFT SILICONE**  
premium silicone that feels warm to the touch

Image: A visual representation highlighting the key features of the LELO SONA 2 Cruise, including Sensonic Technology, 12 settings, sculpted design, 100% waterproof, Cruise Control Technology, and extra-soft silicone.

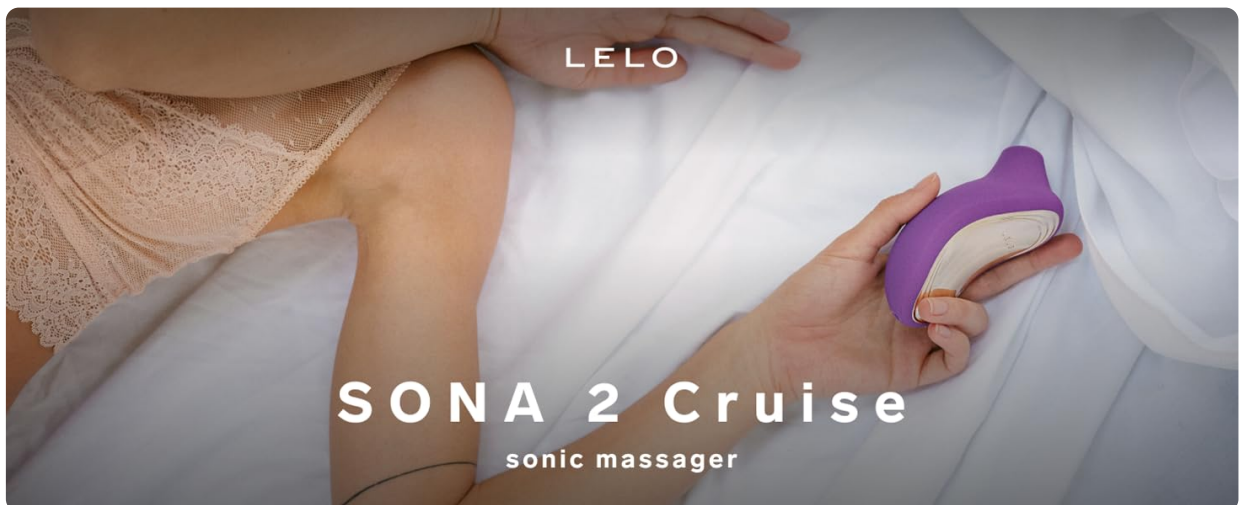


Image: An infographic detailing the long-lasting design, 12 settings, sculpted fit, waterproof design, extra long-lasting charge, extra-soft silicone, and size/weight specifications of the LELO SONA 2 Cruise.

## SETUP & CHARGING

Before first use, ensure your LELO SONA 2 Cruise is fully charged.

1. Locate the USB charging cable included in your package.
2. Connect the cable to the charging port on your device.
3. Plug the USB end into any standard USB port (e.g., laptop, wall adapter).
4. The light on your device will turn on and constantly blink until fully charged. A full charge typically takes around 2 hours.

#### **Important Charging Information:**

- To avoid damaging the battery, never leave your device charging overnight or use it while it's plugged in.
- Always disconnect the charging cable before powering on the device.
- Use only the LELO charging cable to avoid damaging your device.
- As all LELO SONA devices are fully waterproof, always ensure that the charging port is dry before plugging it in. The port is vacuum-sealed, so you don't have to worry about water damaging your device.

Your browser does not support the video tag.

Video: LELO SONA Highlights. This short video demonstrates the unboxing, charging, and basic operation of the LELO SONA device, including its travel lock and different models.

Your browser does not support the video tag.

Video: SONA by LELO - Instructional video. A comprehensive instructional video covering unboxing, charging, unlocking, operating modes, intensity adjustment, cleaning, and storage for the LELO SONA device.

## **OPERATING (MODES & INTENSITIES)**

---

Your LELO SONA 2 Cruise offers a variety of settings for personalized pleasure:

1. **Before First Use:** Charge your device for 2 hours.
2. **To Turn It On:** Press the '+' button. The LED lights will blink to indicate the battery level.
3. **To Switch Between 12 Modes:** Press the '()' button (middle button).
4. **To Decrease or Increase the Intensity:** Use the '+' and '-' buttons.
5. **To Turn It Off:** Press and hold the '-' button.
6. **Travel Lock:** To unlock, press and hold the '+' and '-' buttons for 5 seconds. Repeat the same procedure for locking the device when you travel.



## How to use

### **BEFORE FIRST USE**

charge your device for 2 hours

### **TO TURN IT ON**

press the + button

### **THE LED LIGHTS WILL BLINK**

to indicate the battery level

### **TO SWITCH BETWEEN 12 MODES**

press the () button

### **TO DECREASE OR INCREASE THE INTENSITY**

use the + and the - buttons

### **TO TURN IT OFF**

press and hold the - button

Image: A visual guide on how to use the LELO SONA 2 Cruise, detailing steps for turning on, switching modes, adjusting intensity, and turning off the device.

## USAGE TIPS

For the best experience with your LELO SONA 2 Cruise, follow these serving suggestions:

### **1. Step 1: Prep**

Add a liberal amount of LELO Personal Moisturizer to your toy and body for the smoothest experience.

## ticking all the boxes



### FOR YEARS TO COME

made for long-term enjoyment



### 12 SETTINGS

everyone can find the right intensity



### SCULPTED TO FIT YOUR PLEASURE

made from a single piece of silicone



### WATERPROOF DESIGN

perfect for the bath and shower



### EXTRA LONG-LASTING CHARGE

longer time for pleasure



### EXTRA-SOFT SILICONE

premium silicone that feels warm to the touch



### SIZE AND WEIGHT

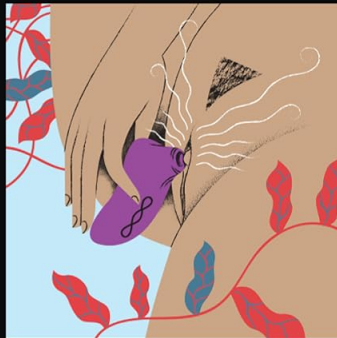
112 x 55 x 51 mm / 4.4 x 2.1 x 2 in

125 g / 4.4 oz

Image: Illustration showing the application of lubricant as the first step for using the device.

## 2. Step 2: Engage

Place the mouth of the device on your outer pleasure spot or next to it if direct contact is too intense. Feel free to take a break if the intensity becomes too great.



STEP 2

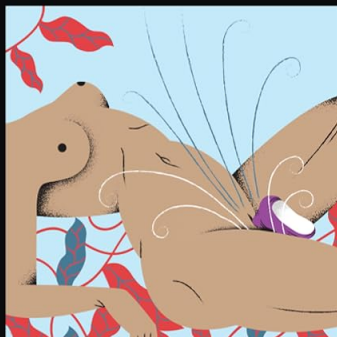
### Engage

Place the mouth of the device on your outer pleasure spot or next to it if the direct contact is too intense. Feel free to take a break if the intensity becomes too great.

Image: Illustration demonstrating how to position the device for optimal engagement.

## 3. Step 3: Indulge

Find what feels the best, explore different settings, and enjoy the upcoming climax. Feel free to add more LELO Personal Moisturizer for an even smoother experience.



STEP 3

### Indulge

Find what feels the best, explore different settings, and enjoy the upcoming climax. Feel free to add more LELO Personal Moisturizer for an even smoother experience.

Image: Illustration depicting the exploration of different settings for a fulfilling experience.

## CLEANING & STORAGE (MAINTENANCE)

Proper cleaning and storage will prolong the life of your LELO SONA 2 Cruise.

1. After each use, thoroughly clean your device. The safest way is by using LELO Premium Cleaning Spray (anti-bacterial, silicone-free).
2. Just spray it on, leave for 5 seconds, then gently wipe away.
3. If the spray is not available, wash your device with lukewarm water and gentle soap. Avoid using silicone-based soaps as they may damage the device.
4. Pay close attention when cleaning the mouth of the device. Spray the cleaning spray or soap inside, then wash it with warm water and wipe or pat dry. There's no need to apply any force or scrub as this can easily damage the opening.
5. Once your SONA 2 Cruise is clean and dry, store it away in the satin pouch that came with the device.
6. Make sure to keep it in a dry and safe place without exposure to any heat or direct sunlight.



Image: The LELO SONA 2 Cruise device shown wet on grass, illustrating its waterproof capability for easy cleaning.

## TROUBLESHOOTING

---

If you encounter any issues with your LELO SONA 2 Cruise, consider the following:

- **Device Not Turning On:** Ensure the device is fully charged. If the light doesn't turn on when you connect the USB charger, your battery might be completely empty; it may take a few minutes to start

charging. Also, check if the travel lock is activated (see Operating section for unlocking instructions).

- **Reduced Intensity/Functionality:** Ensure the device is fully charged. If the motor seems weak or non-responsive, and charging doesn't resolve it, the device may require servicing.
- **Water Damage Concerns:** While the device is waterproof, ensure the charging port is completely dry before plugging it in. Water in the charging port can cause issues.
- **Warranty Claims:** If you experience persistent issues, refer to the Warranty & Support section for information on how to proceed with a warranty claim. Note that product registration is often required for warranty claims.

## SPECIFICATIONS

<b>Brand</b>	LELO
<b>Model</b>	SONA 2 Cruise (Item model number: 7932)
<b>Color</b>	Black
<b>Material</b>	Acrylonitrile Butadiene Styrene (ABS)
<b>Product Dimensions</b>	3.9 x 3.46 x 2.2 inches
<b>Item Weight</b>	4.76 ounces
<b>Battery</b>	1 Lithium Polymer battery required
<b>Waterproof Rating</b>	IPX7 Certified

## WARRANTY & SUPPORT

LELO stands by the quality of its products. Your LELO SONA 2 Cruise comes with:

- A **1-year warranty** for manufacturing defects.
- A **10-year quality guarantee**, offering a discount code for replacement in case of product failure outside the warranty period.

To claim your warranty, you typically need to register your product. Please refer to the warranty registration card included in your package for specific instructions and contact information.

For further assistance or questions, you can visit the official LELO website or contact their customer support. LELO's commitment is to ensure satisfaction and provide new sensations through patented pleasure technologies, as part of a self-care movement.