

Phomemo M110

Phomemo M110 Label Printer User Manual

Your Guide to Efficient Labeling

1. INTRODUCTION

The Phomemo M110 is a versatile and portable thermal label printer designed for a wide range of applications, from small business needs to home organization. This manual provides detailed instructions to help you set up, operate, and maintain your M110 label printer, ensuring optimal performance and longevity.



The Phomemo M110 label printer, shown in white, accompanied by various sample labels including address, thank you, and decorative designs.

2. WHAT'S IN THE BOX

Upon unboxing your Phomemo M110 Label Printer, please verify that all the following components are included:

- Phomemo M110 Label Printer
- Labels (one roll included)
- User Manual
- USB Type-C Cable (for charging and PC connection)

3. SAFETY INFORMATION

To ensure safe and proper operation of your Phomemo M110 Label Printer, please observe the following safety guidelines:

- Always charge the device when the battery level is below 20% to maintain battery health and performance.
- Do not expose the printer to extreme temperatures, direct sunlight, or high humidity.
- Avoid dropping or subjecting the printer to strong impacts.
- Keep out of reach of children.
- Use only Phomemo-approved labels and accessories.

4. SETUP GUIDE

4.1. Loading Labels

1. **Open Top Cover:** Gently press the release button on the side of the printer and lift the top cover.
2. **Attach Paper Roll:** Place the label roll onto the holder, ensuring the labels feed smoothly from the bottom.
3. **Close Cover:** Close the top cover firmly until it clicks into place. Ensure the labels are aligned with the print head.

Powerful compatibility

Perfectly compatible with mobile phones, tablets and laptops.

Print Master
Connect via Bluetooth

Download on the App Store
GET IT ON Google Play





Labelife
Connect via USB

Macos Windows Chrome Linux





Visual guide for opening the top cover, attaching the paper roll, and closing the cover.

4.2. Software Installation & Connection

The Phomemo M110 offers versatile connectivity options for both mobile devices and computers.

For Mobile Devices (Bluetooth)

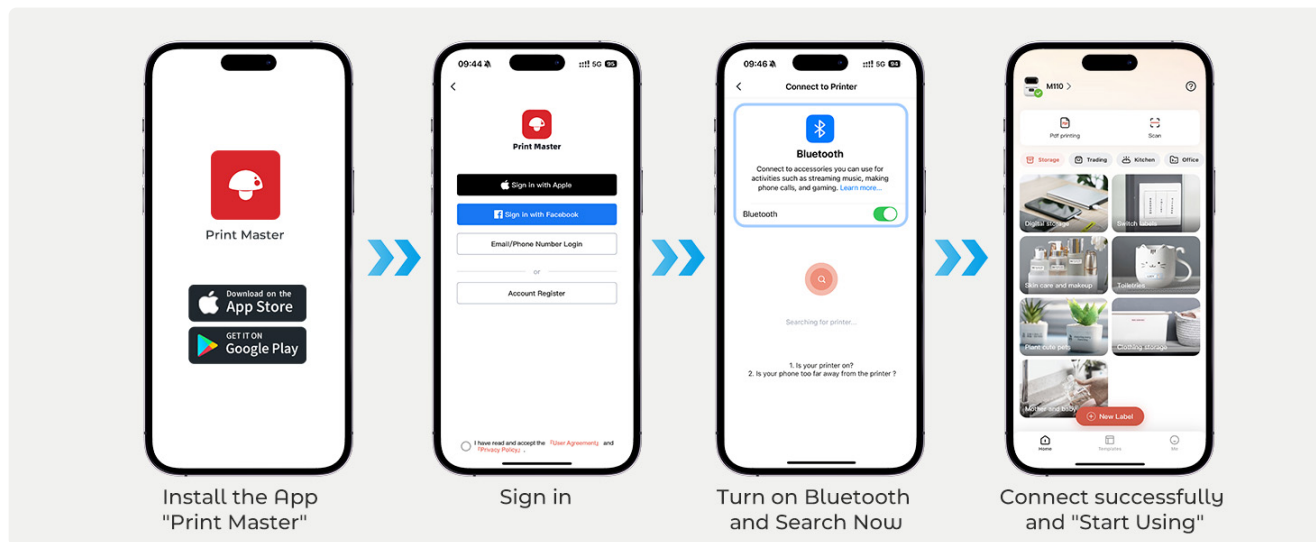
1. **Install the App:** Download the "Print Master" app from the App Store (iOS) or Google Play Store (Android).
2. **Sign In/Register:** Open the app and sign in or register for an account.
3. **Turn on Bluetooth:** Ensure Bluetooth is enabled on your mobile device.
4. **Connect to Printer:** In the Print Master app, search for your printer (identified by its ID, e.g., Q009E07T0073) and connect.



Flowchart showing the steps to install the Print Master app, sign in, enable Bluetooth, and connect to the printer.

For Computers (USB)

1. **Turn on Device:** Press and hold the power button for three seconds to turn on the printer.
2. **Connect USB:** Connect the USB cable from the printer to your computer.
3. **Download Labelife:** Download the Labelife software compatible with Windows 7 and above, Mac OS 10 and above, or Chrome OS.
4. **Edit & Print:** Use Labelife to edit templates and print labels directly from your computer.



Instructions for connecting the M110 to a computer via USB and using the Labelife software for printing.

Note: Bluetooth and USB connections cannot be used simultaneously.

5. OPERATING INSTRUCTIONS

5.1. Creating and Printing Labels

The Print Master app provides a user-friendly interface for designing and printing labels.

- **Template Selection:** Choose from over 300+ pre-designed label templates for various uses (clothing, food, jewelry, etc.).
- **Customization:** Utilize over 80+ fonts and 1000+ icons to personalize your labels. You can also create your own templates.
- **Text & Image Input:** Add text, images, barcodes, QR codes, and tables to your labels.
- **OCR Function:** The Optical Character Recognition (OCR) feature allows you to convert text from images directly into editable text within the app.
- **Batch Printing:** Improve efficiency by using the Excel batch printing feature for multiple labels.

Powerful Compatibility

Perfectly compatible with mobile
phones, tablets and laptops



Bluetooth and USB can't be connected at the same time

A user interacting with the Phomemo M110 printer and its companion app on a smartphone, demonstrating ease of use for home organization.



A display of the wide variety of template fonts and icons available for selection within the Print Master application.

5.2. Understanding the LED Display

The Phomemo M110 is equipped with an LED display screen that provides important status indicators:

- **Battery Display:** Shows the current battery level, prompting you when to recharge.
- **Operation Prompt:** Provides visual cues for various operations or status changes.
- **Assisted Connection:** Indicates the connection status (e.g., Bluetooth connected).



Close-up view of the Phomemo M110's LED display, highlighting the battery indicator, operation prompts, and assisted connection status.

6. MAINTENANCE

Regular maintenance ensures the longevity and optimal performance of your Phomemo M110 Label Printer.

6.1. Cleaning the Print Head

To maintain print quality, periodically clean the thermal print head:

1. Turn off the printer and disconnect it from any power source.
2. Open the top cover to access the print head.
3. Gently wipe the print head with a cotton swab lightly dampened with isopropyl alcohol.
4. Allow the print head to dry completely before closing the cover and turning on the printer.

6.2. Battery Care

The M110 uses a Lithium Polymer battery. Follow these guidelines for optimal battery life:

- Charge the printer when the battery indicator shows low power (below 20%).
- Avoid completely draining the battery frequently.
- If storing the printer for an extended period, charge it to about 50% and store in a cool, dry place.

7. TROUBLESHOOTING

If you encounter issues with your Phomemo M110, refer to the following common problems and solutions:

Problem	Possible Cause	Solution
Printer not turning on	Low battery; Power button not pressed long enough	Charge the printer; Press and hold the power button for 3 seconds
Cannot connect via Bluetooth	Bluetooth off; App not open; Printer too far; Incorrect printer selected	Ensure Bluetooth is on; Open Print Master app; Move closer to printer; Select correct printer ID
Poor print quality	Dirty print head; Low battery; Incorrect label type; Labels loaded incorrectly	Clean print head (see Section 6.1); Charge printer; Ensure correct thermal labels are used; Reload labels correctly
Paper jam	Labels misaligned; Debris in paper path	Open cover, remove labels, clear any debris, reload labels correctly
Printer not responding	System error	Restart the printer; If issue persists, contact support

For further assistance, please refer to the in-app technical support or visit the official Phomemo website.

8. SPECIFICATIONS

Detailed technical specifications for the Phomemo M110 Label Printer:

Feature	Specification
Model Name	M110

Feature	Specification
Brand	Phomemo
Printing Technology	Thermal
Connectivity Technology	USB Type-C, Bluetooth
Printer Output	Monochrome
Maximum Media Size	50mm
Print Media	Labels
Max Input Sheet Capacity	30
Compatible Devices	Windows 7 and above, Chrome OS, iOS, Mac OS 10 and above, Android
Control Method	App
Item Weight	9 ounces (255 Grams)
Product Dimensions	1.18 x 5.91 x 3.54 inches (4.48"D x 2.44"W x 3.43"H)
Battery	1 Lithium Polymer battery required
UPC	789371385861
Country of Origin	China

9. WARRANTY AND SUPPORT


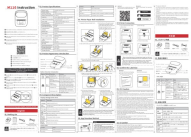




Phomemo products are manufactured with high-quality standards. For warranty information and technical support, please refer to the official Phomemo website or contact their customer service directly.

Manufacturer: Zhuhai Quin Technology Co., LTD.

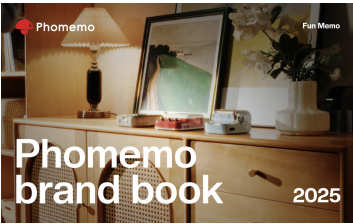
Email: support@phomemo.com

Website: www.phomemo.com

For the most up-to-date support resources, including FAQs and driver downloads, please visit the official Phomemo website.

<div><div>Instruction</div><div>M110</div><div>Product Instruction</div></div> <div></div> <div><small>Please read this instruction book carefully before operating the product.</small></div>	<p>M110 Portable Label Printer Instruction Manual</p> <p>Comprehensive instruction manual for the M110 portable label printer, covering product specifications, setup, app download, printer connection, label size confirmation, printing guides, troubleshooting, and warranty information. Learn how to operate and maintain your M110 thermal label printer.</p>
<div></div>	<p>M110 Portable Thermal Label Printer Instruction Manual</p> <p>Comprehensive instruction manual for the M110 portable thermal label printer, covering product specifications, setup, app download, connection, and troubleshooting. Learn how to install paper rolls, configure settings, and maintain your M110 label printer for efficient use.</p>
<div><div>Instruction</div><div>M110</div><div>Product Instruction</div></div> <div></div> <div><small>Please read this instruction book carefully before operating the product.</small></div>	<p>M110 Label Maker Product Instruction Manual</p> <p>Comprehensive instruction manual for the M110 Label Maker, covering product specifications, setup, app connection, printing guides, troubleshooting common issues, and warranty information. Learn how to install paper rolls, connect via Bluetooth, and customize labels using the Print Master app for efficient thermal printing.</p>
<div></div>	<p>M110 Portable Label Printer Instruction Manual</p> <p>The M110 Portable Label Printer instruction manual provides comprehensive details on product specifications, setup, operation, and troubleshooting. Learn how to install paper rolls, connect to the 'Print Master' app via Bluetooth, and understand button functions. This guide covers technical specifications, display settings, and regulatory compliance (FCC, IC) for efficient and reliable label printing.</p>
<div><div>User Guide</div><div>M110</div></div> <div></div> <div>English</div>	<p>Phomemo M110 Label Maker User Guide</p> <p>Comprehensive user guide for the Phomemo M110 label maker, covering product introduction, setup, app usage, paper replacement, PC application installation, safety instructions, cleaning, maintenance, and regulatory information.</p>
<div><div>Instruction</div><div>M220</div><div>Product Instruction</div></div> <div></div> <div><small>Please read this instruction book carefully before operating the product.</small></div>	<p>Phomemo M220 Label Maker User Manual</p> <p>Comprehensive guide for the Phomemo M220 label maker, covering packing list, product specifications, appearance introduction, component description, paper roll installation, app download and connection, label size confirmation, printing guide, troubleshooting, and warranty information.</p>

Documents - Phomemo – M110



[Phomemo Brand Book 2025: Fun Memo](#)

Explore the Phomemo brand book for 2025, detailing the Phomemo story, products, and media presence. Discover the company's journey, its innovative printing solutions, and its vibrant community.

lang:en score:28 filesize: 5.61 M page_count: 39 document date: 2025-01-22



[\[pdf\]](#)

5907085521633 m110 pl M110 Instrukcja obsługi Max Elektrourządzenia radiowego Mini drukarka jest zgodny z dyrektywą files innpro phomemo Adres producenta Building 2 No 1 gproxymaxeлектро storage file pimcore import 2025 4 9 0967345a62091304c3d14aa09e7670a1 etykiet instrukcja obsługi |||

M110 Instrukcja obsługi Przed uyciem produktu należy uwanie przeczyta niniejsz instrukcj i odpowiednio j przechowywa. Wicej szczegolowych informacji mona znale na oficjalnej stronie internetowej: www.phomemo.com Moesz zeskanowa kod QR, aby wywietli wicej samouczkw, filmw instruktaowych i czsto zadawan...

lang:pl **score:26** filesize: 3.63 M page_count: 11 document date: 2024-10-16

User Guide

M110

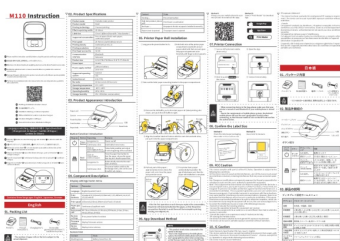


[Phomemo M110 Label Maker User Guide](#)

Comprehensive user guide for the Phomemo M110 label maker, covering product introduction, setup, app usage, paper replacement, PC application installation, safety instructions, cleaning, maintenance, and regulatory information.

lang:en **score:22** filesize: 2.97 M page_count: 23 document date: 2025-02-19

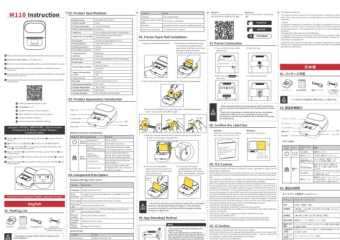
English



[M110 Portable Label Printer Instruction Manual](#)

The M110 Portable Label Printer instruction manual provides comprehensive details on product specifications, setup, operation, and troubleshooting. Learn how to install paper rolls, connect to the 'Print Master' app via Bluetooth, and understand button functions. This guide covers technical specifications, display settings, and regulatory compliance (FCC, IC) for efficient and reliable label printing.

lang:en **score:21** filesize: 7.92 M page_count: 2 document date: 2023-06-28



[M110 Portable Thermal Label Printer Instruction Manual](#)

Comprehensive instruction manual for the M110 portable thermal label printer, covering product specifications, setup, app download, connection, and troubleshooting. Learn how to install paper rolls, configure settings, and maintain your M110 label printer for efficient use.

lang:en **score:17** filesize: 7.92 M page_count: 2 document date: 2023-06-29

Instruction

M110 Product
Instruction

From Label online



Please read this instruction book carefully before operating the product.

[Labelonline M110 Label Maker Instruction Manual](#)

A comprehensive instruction manual for the Labelonline M110 Label Maker, detailing product specifications, setup, paper installation, app usage, printing guides, troubleshooting common issues, and warranty information.

lang:en score:17 filesize: 5.07 M page_count: 17 document date: 2022-05-27

Instruction

M110 Product
Instruction



Please read this instruction book carefully before operating the product.

[M110 Label Maker Product Instruction Manual](#)

Comprehensive instruction manual for the M110 Label Maker, covering product specifications, setup, app connection, printing guides, troubleshooting common issues, and warranty information. Learn how to install paper rolls, connect via Bluetooth, and customize labels using the Print Master app for efficient thermal printing.

lang:en score:17 filesize: 5.06 M page_count: 17 document date: 2023-03-01

Instruction

M110 Product
Instruction



Please read this instruction book carefully before operating the product.

[M110 Portable Label Printer Instruction Manual](#)

Comprehensive instruction manual for the M110 portable label printer, covering product specifications, setup, app download, printer connection, label size confirmation, printing guides, troubleshooting, and warranty information. Learn how to operate and maintain your M110 thermal label printer.

lang:en score:16 filesize: 4.94 M page_count: 17 document date: 2021-12-17

Instruction

M200 Product Instruction



Please read this instruction book carefully before operating the product.

[M200 Portable Label Printer User Manual & Setup Guide](#)

Comprehensive user manual for the M200 portable label printer, covering setup, specifications, app connectivity, printing instructions, troubleshooting, and warranty information.

lang:en score:16 filesize: 4.97 M page_count: 16 document date: 2022-01-24

Instruction

M200 Product Instruction



Please read this instruction book carefully before operating the product.

[\[pdf\] Guide Label](#)

M200 20220124 Phomemo M200 Label Makers 3 Inch 2024 Upgrade M110 Barcode Printer Computer Bluetooth Thermal for Android iOS Windows MAC OS Shipping Labeling QR Code Type C Charger PinkM220 PK User Guide Pink B0CGTRXR1NC190 q72AcLm media amazon images I C190 q72AcL |||

...

lang:en score:15 filesize: 4.97 M page_count: 16 document date: 2022-01-24

Instruction

M110 Product Instruction



Please read this instruction book carefully before operating the product.

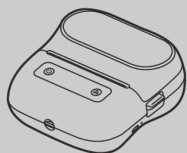
[M110 Label Maker Instruction Manual](#)

Comprehensive instruction manual for the M110 Label Maker, covering product specifications, appearance, button functions, paper roll installation, app download, device connection, label size confirmation, printing guides, editing functions, troubleshooting common issues, warranty information, and FCC compliance. Optimize your label printing experience with this detailed guide.

lang:en score:15 filesize: 5.06 M page_count: 17 document date: 2022-06-01

User Guide

M220



1. Product Introduction

1.1 Packing List



Printer
x1



Quick Start Guide
x1



Type-C Cable
x1



Paper Roll Spindle
x1



100-Pc 40*30 mm
Paper Roll x1

Ⓢ The Paper Roll and Paper Roll Spindle have been installed in the printer. However, if you have purchased a bundle printer package, it does not include a 40*30mm 100pc Paper Roll.

1.2 Printer Parts Instruction

Decorative Panel

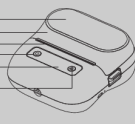
Top Cover

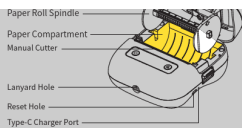
Paper Exit

Power/Menu Button

Display

Feed/Select Button





2. Getting Started

2.1 Downloading the App

Method 1
Search for the "Print Master" app on App Store® or Google Play™ to download and install it.



Method 2
Scan the QR code to download the app.



2.2 User Guide

01 Remove the protective film.



Ⓢ This step is required for first use.

02 Open the "Print Master" app.



02 Long press the Power Button for 3 seconds until the Display lights up.



04 Tap [Auto Connect].



05 Grant permissions.



Ⓢ For more information about app permissions, see § 1.2.3. (Permissions) in this guide.

06 Grant permissions.



Ⓢ There is also a button for manual connection on [Home]. For detailed instructions, see § 1.1.1. (Manual Connection) in this guide.

07 Connected.



08 Edit your first label, and tap [Print] after you finish editing.



09 Printing is completed.



10 Tear off the label along the Paper Exit.



11 Remove the liner.



12 Attach the label to a dry, flat surface.



3. Replacing the Paper Roll

01 Long press the Power Button for 3 seconds until the Display lights up.



02 Open the "Print Master" app.



03 Tap [⌵] at the top right corner for connection.



04 Wait for the printer to be connected.



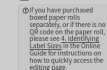
05 Connected.



06 Go to "Home" and tap [Scan].



07 Take out the unused paper roll from the printer.



Ⓢ If you have purchased boxed paper rolls, regardless of whether there is no QR code on the paper roll, please see § 1.2.3. (QR Code) in the User Guide for instructions on how to quickly access the editing page.



The QR code is for demonstration only. Please scan the actual QR code on your paper roll.

08 Scanning frame aligned with QR code on paper roll protection sticker.



09 The label size is identified.



10 Press down the Cover Open Lever and take out the Paper Roll Spindle.



11 Remove the Movable Damper.



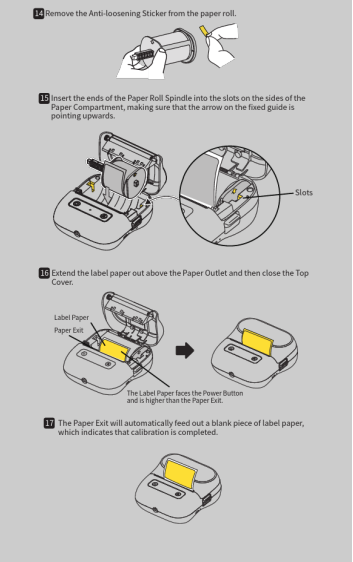
Ⓢ Please remove the existing paper roll from the Paper Roll Spindle before loading a new paper roll.

12 Place the paper roll.

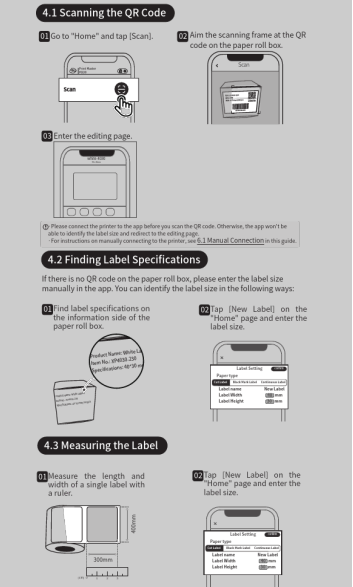


13 Reinstall the Movable Damper and push it to the edge of the paper roll.

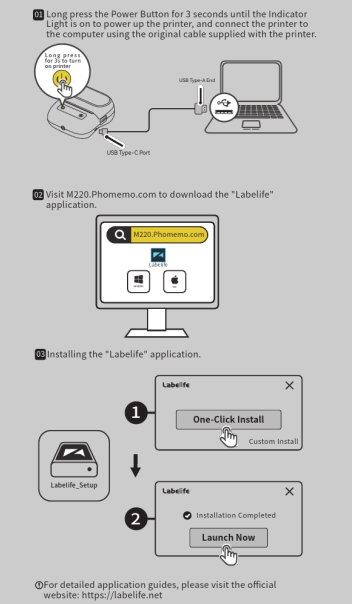




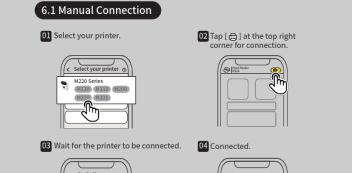
4. Identifying Label Sizes



5. Downloading and Installing the PC Application



6.App User Guide



[\[pdf\]](#) User Manual Quick Start Guide Installation Guide Guide Label

M220 ZX V1 240315 CP Visit Phomemo to the Labelife application Installing M110 Select your printer 01 02 Tap at top right corner for C1esGQJ KcLm media amazon images I C1esGQJ KcL ref dp product quick view |||

User Guide M220 1. Product Introduction 1.1 Packing List Printer 1 Quick Start Guide 1 Type-C Ca ... pp User Guide 6.1 Manual Connection 01 Select your printer. Select your printer M220 Series M120 **M110** M220 M221 M200 02 Tap at the top right corner for connection. Print Master M220 03 Wait ...

lang:en score:13 filesize: 6.09 M page_count: 1 document date: 2024-03-28



6.2 Permission Description

For iOS users:

The app requires access to the Internet

The app requires Bluetooth permission



For Android users:

The app requires Bluetooth permission



The app requires permission to search for nearby Bluetooth devices



For Android 12 and above, the app requires permission to search for nearby Bluetooth devices, for systems below Android 12, the app requires GPS permission in order to search for nearby Bluetooth devices.

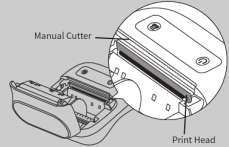
Bluetooth Pairing Request



You can simply tap "Pair" without checking "Allow access to your contacts and call history".

7. Safety Instructions

7.1 Manual Cutter and Print Head Instructions



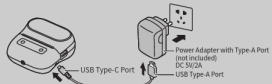
Manual Cutter Warning: This cutter has sharp edges. Do not touch the edges of the cutter.

Print Head Warning: The component can be HOT! Touching it when it is hot can cause burns to your fingers. Before you touch the Print Head, please wait for at least 30 minutes after turning off the printer.

7.2 Charging Instructions

- Please prepare your own power adapter (DC 5V/2A) with a Type-A port.
- Insert the Type-C end (flat end) of the USB cable into the Type-C port of the power adapter.
- After connecting the printer to an outlet via the power adapter, check the Display for the following indication: When the printer is off, "Charging" will be displayed. When the printer is on, a "Charging" icon will appear in the top right corner of the Display.
- To ensure quick usage, please charge the printer for at least 20 minutes. For a complete charge, wait for 2-3 hours or until the display indicates "Charge Complete".
- As the printer may heat up during charging, avoid placing it on materials such as cotton or linen while charging.
- Once the battery is fully charged, please unplug it promptly.

Using the printer while charging will slow down the charging speed. To preserve battery life, it is not advisable to print while charging.

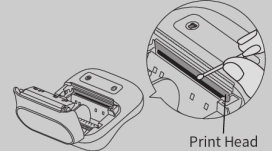


8. Cleaning and Maintenance

Please make sure the printer is turned off before performing any cleaning or maintenance.

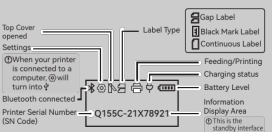
If you encounter issues such as blank lines, blurry print, or missing characters, it may be caused by dirt on the Print Head. Please follow these steps:

- If you have just finished printing, wait for at least 30 minutes for the Print Head to cool down completely.
- Use a cotton swab dipped in alcohol or a print head cleaning pen (purchased separately) to gently wipe the surface of the Print Head about 5 times to remove any dust and stains.
- Wait 5-10 minutes for the alcohol to evaporate completely. Thus, the cleaning is done, and you can continue using the printer.



9. Operator Panel Instructions

9.1 Display Instructions



9.2 Button Instructions

Button Type	Operation	Function
Power Button	Long press for 3s	Power on/off
	Press once	When in standby mode, access main menu for selection
	Press once	When in standby mode, feed out paper
Feed Button	Press once	After selecting an option in a sub-menu, the system will automatically revert to that standby interface if there is no further activity for 10 seconds

9.3 Menu Instructions

Main Menu	Sub-menu	Explanation
Language	Simplified Chinese, English	Choose language
Print Density	1 (lightest), 2, 3, 4 (lightest), 5, 6 (darkest), 7, 8, 9, 10 (darkest)	Choose print density

Special Notes

The company takes full responsibility for the revision and explanation of this manual, with utmost care taken to ensure its accuracy. However, please note that any technical improvements to the product may not be separately notified, and that the images of the product, accessories, software interfaces, etc. in this manual are for illustrative purposes and reference only. Due to product updates and upgrades, the actual product may be slightly different from the images. Please rely on the actual product for all details.

10. FCC INFORMATION (U.S.A.)

FCC Compliance Statement :
This device complies with Part 15 of the FCC Rules. Operation is subject to the following two conditions: (1) This device may not cause harmful interference, and (2) this device must accept any interference received, including interference that may cause undesired operation.

This equipment has been tested and found to comply with the limits for a Class B digital device, pursuant to Part 15 of the FCC Rules. These limits are designed to provide reasonable protection against harmful interference in a residential installation. This equipment generates, uses and can radiate radio frequency energy and, if not installed and used in accordance with the instructions, may cause harmful interference to radio communications. However, there is no guarantee that interference will not occur in a particular installation. If this equipment does cause harmful interference to radio or television reception, which can be determined by turning the equipment off and on, the user is encouraged to try to correct the interference by one of the following measures:

- Any changes or modifications not expressly approved by the party responsible for compliance could void the user's authority to operate this equipment.

- This product satisfies FCC regulations when shielded cables and connectors are used to connect the unit to other equipment. To prevent electromagnetic interference with electric appliances, such as radios and televisions, use shielded cables and connectors for connections.

This equipment complies with FCC radiation exposure limits set forth for an uncontrolled environment. This equipment should be installed and operated so there is at least 8 inches (20 cm) between the radiator and your body. This device and its antenna(s) must not be co-located or operated in conjunction with any other antenna or transmitter.

This device contains licence-exempt transmitter(s)/receiver(s) that comply with Innovation, Science and Economic Development Canada's licence-exempt RSS(s). Operation is subject to the following two conditions: 1. This device may not cause interference. 2. This device must accept any interference, including interference that may cause undesired operation of the device.

This equipment complies with ISED radiation exposure limits set forth for an uncontrolled environment and meets RSS-102 of the ISED radio frequency (RF) Exposure rules. This equipment should be installed and operated keeping the radiator at least 20cm or more away from person's body.

Cet appareil contient un émetteur (S) / récepteur (S) exempté (S) de licence d'innovation, Science et développement économique Canada. Le fonctionnement est soumis aux deux conditions suivantes: 1. Cet appareil ne peut pas causer d'interférences. 2. Cet appareil doit accepter toute interférence, y compris les interférences qui peuvent causer un fonctionnement indésirable de l'appareil.

Cet équipement est conforme aux limites d'exposition aux rayonnements ionisants fixées pour un environnement non contrôlé et répond à RSS-102 des règles d'exposition aux rayonnements ionisants (RF). Cet équipement devrait être installé et utilisé en gardant le radiateur au moins 20cm ou plus loin du corps de la personne.

lang:en score:12 filesize: 1.5 M page count: 1 document date: 2024-06-11



[Phomemo M110 Series Ink-less Label Maker](#)

Discover the Phomemo M110 Series Label Maker, an ink-less, speedy, and reliable thermal label printer. Features include a lithium battery, support for 20-50mm paper, and compact white design. Ideal for home or office labeling needs.

lang:en score:10 filesize: 397.48 K page_count: 1 document date: 2024-10-25