



[Manuals.plus](#) /

› [ZOKOP](#) /

› ZOKOP ZB-1 4L Countertop Water Distiller Machine User Manual

## ZOKOP ZB-1

# ZOKOP ZB-1 4L Countertop Water Distiller Machine User Manual

Model: ZB-1

[Components](#)   [Setup](#)   [Introduction](#)   [Operation](#)   [Safety Instructions](#)   [Maintenance](#)   [Troubleshooting](#)   [Package Contents](#)   [Specifications](#)   [Product](#)   [Warranty & Support](#)

## 1. INTRODUCTION

This manual provides comprehensive instructions for the safe and efficient operation, setup, and maintenance of your ZOKOP ZB-1 4L Countertop Water Distiller Machine. Please read this manual thoroughly before using the appliance and retain it for future reference. This distiller is designed to produce purified water for various household needs.



Image: The ZOKOP ZB-1 Water Distiller positioned on a kitchen countertop, demonstrating its compact size and aesthetic integration into a home environment. A collection bottle is placed next to the distiller, ready to collect purified water.

## 2. IMPORTANT SAFETY INSTRUCTIONS

To reduce the risk of fire, electric shock, or injury, always follow these basic safety precautions:

- Read all instructions before using the appliance.
- Do not immerse the distiller base, cord, or plug in water or other liquids.
- Always unplug the distiller from the outlet when not in use, before putting on or taking off parts, and before cleaning.
- Do not operate any appliance with a damaged cord or plug, or after the appliance malfunctions or has been damaged in any manner.
- The appliance is for household use only. Do not use outdoors.
- Do not let the cord hang over the edge of a table or counter, or touch hot surfaces.
- Do not place on or near a hot gas or electric burner, or in a heated oven.
- Always ensure the discharge cap is properly installed before operation.

- Use only distilled water for drinking or other intended purposes. Do not distill other liquids.
- Keep children away from the appliance during operation due to hot surfaces and steam.
- Ensure proper ventilation around the unit during operation.
- The distiller will auto-off when the temperature exceeds 320°F (160°C).

### **3. PACKAGE CONTENTS**

---

Carefully unpack all components and check against the list below. If any items are missing or damaged, contact customer support.

- 1 x Distiller Unit
- 1 x Water Collection Bottle
- 1 x Discharge Cap
- 1 x Bottle Cap
- 1 x Filter (includes activated carbon sachet)
- 1 x Main Power Cord
- 1 x Chamber Cleaning Powder
- 1 x Water Outlet Soft Catheter (Food Grade)
- 3 x Activated Charcoal Sachets
- 1 x Instruction Manual



Image: An overhead view displaying all items included in the ZOKOP ZB-1 Water Distiller package. This includes the distiller unit, water collection bottle, power cord, cleaning powder, and multiple activated charcoal sachets, providing a clear visual of what to expect upon unboxing.

## 4. PRODUCT COMPONENTS OVERVIEW

---

Familiarize yourself with the various parts of your ZOKOP ZB-1 Water Distiller:

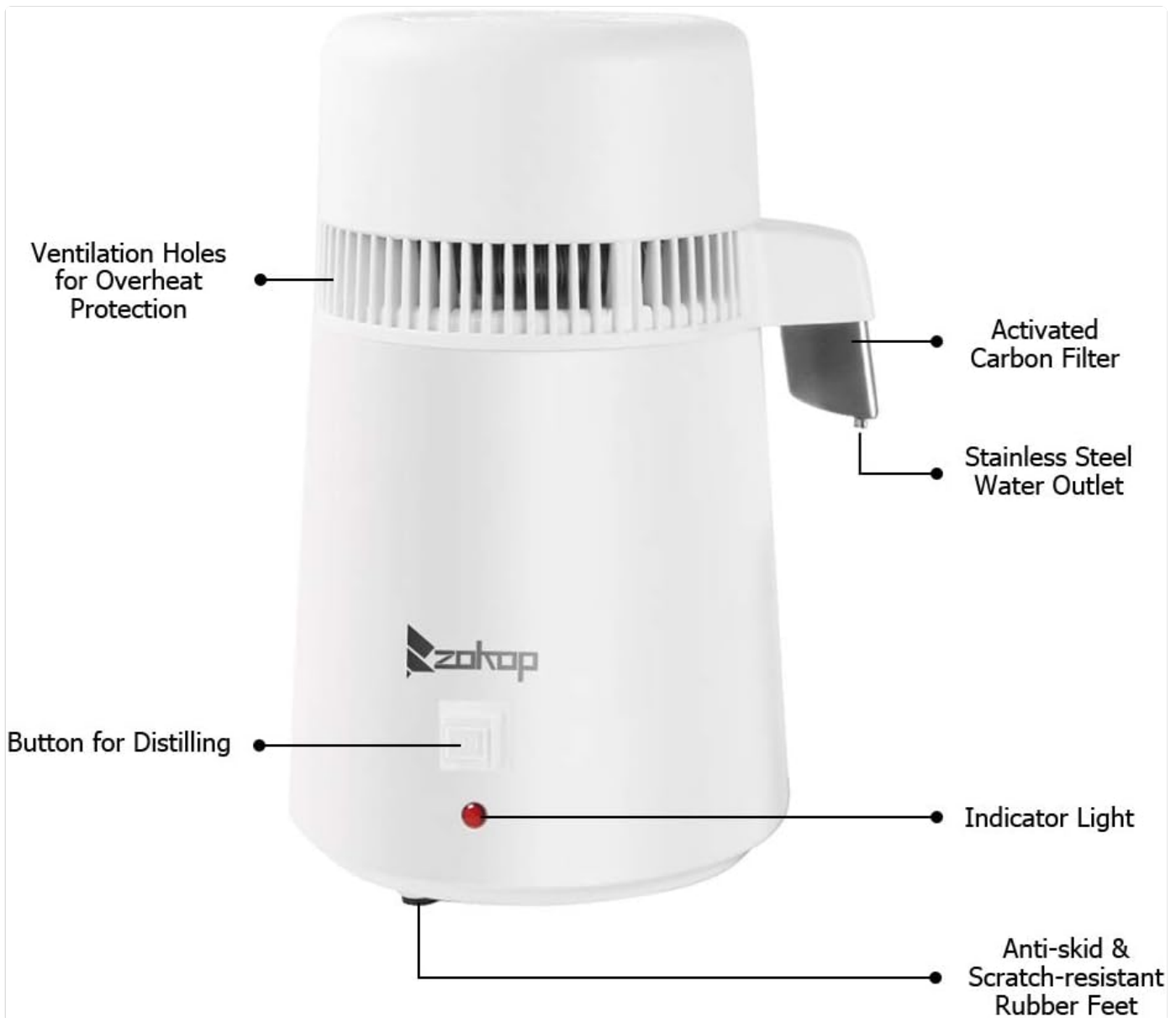


Image: A detailed diagram of the ZOKOP ZB-1 Water Distiller with key components labeled. These include the ventilation holes for overheat protection, the activated carbon filter housing, the stainless steel water outlet, the power button for distilling, the indicator light, and the anti-skid and scratch-resistant rubber feet at the base.

- **Ventilation Holes:** Located on the top and sides, these ensure proper airflow and prevent overheating.
- **Activated Carbon Filter:** Houses the activated charcoal sachet for final water purification.
- **Stainless Steel Water Outlet:** Where the distilled water exits the unit.
- **Distilling Button:** Initiates the distillation process.
- **Indicator Light:** Illuminates when the unit is operating.
- **Anti-skid & Scratch-resistant Rubber Feet:** Provides stability and protects surfaces.
- **Integrated Fan Condenser:** Located at the top, cools the steam back into liquid water.

## 5. SETUP INSTRUCTIONS

Follow these steps for the initial setup of your water distiller:

1. **Unpack:** Remove all packaging materials and ensure all components listed in Section 3 are present.
2. **Placement:** Place the distiller on a stable, flat, heat-resistant surface with adequate ventilation. Ensure it is away from direct sunlight and heat sources.
3. **Install Discharge Cap:** Attach the discharge cap to the water outlet.

4. **Prepare Filter:** Open one activated charcoal sachet and place it inside the filter housing. Insert the filter into the discharge cap.
5. **Position Collection Bottle:** Place the water collection bottle directly under the water outlet.
6. **Initial Cleaning:** Before first use, fill the distiller chamber with water and run one distillation cycle without consuming the water. This cleans the internal components. Discard this first batch of distilled water.

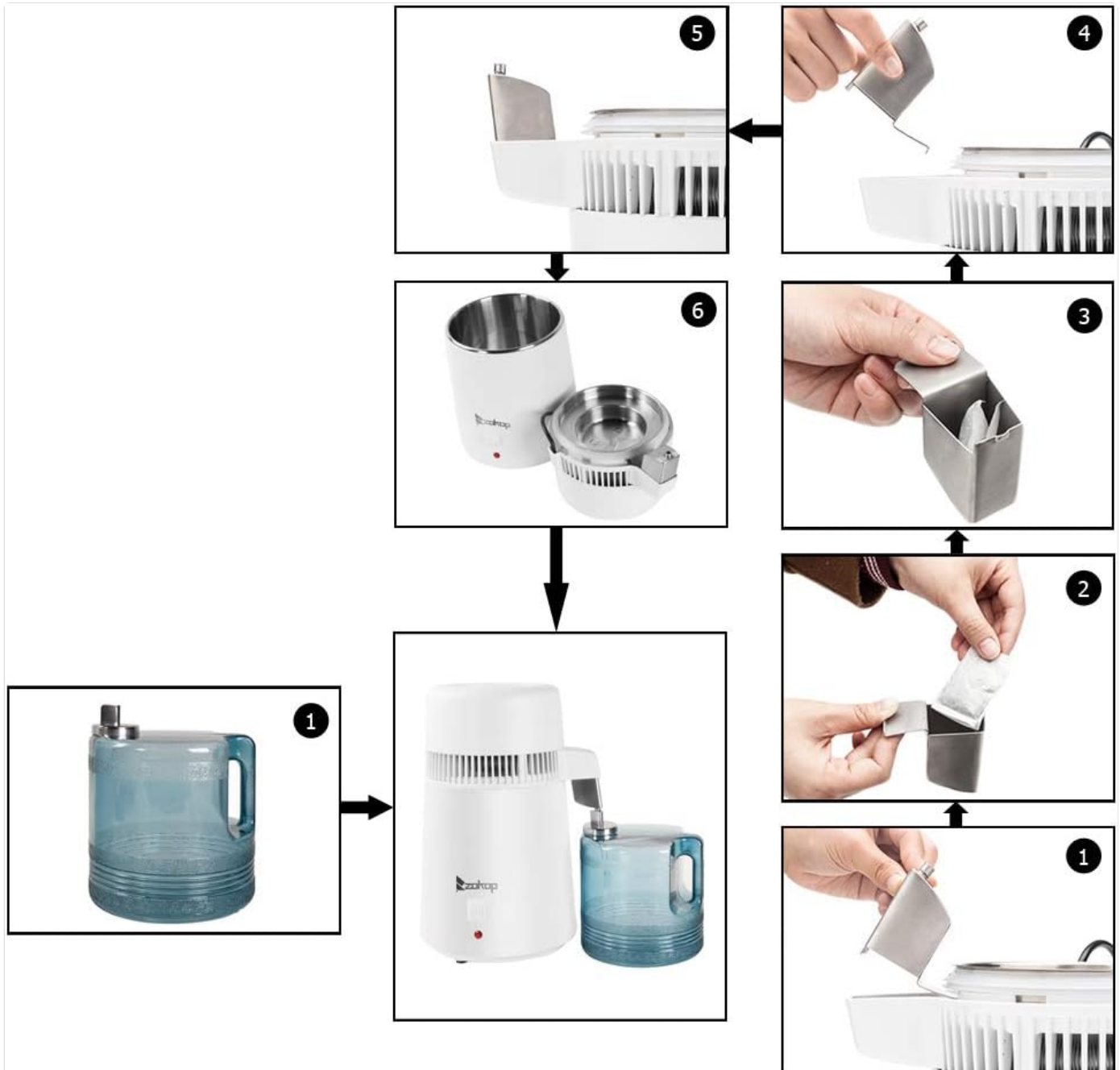


Image: A visual guide illustrating the assembly process for the ZOKOP ZB-1 Water Distiller. It shows the water collection bottle (1), the insertion of an activated charcoal sachet into the filter (2, 3), and the attachment of the filter and discharge cap to the distiller unit (4, 5). An exploded view of the distiller's internal components is also shown (6), alongside the fully assembled unit with the collection bottle.

## 6. OPERATING INSTRUCTIONS

Follow these steps to distill water:

1. **Fill the Chamber:** Open the lid of the distiller and fill the stainless steel boiling chamber with tap water up to the MAX fill line. Do not overfill.
2. **Close Lid:** Securely close the lid of the distiller.
3. **Connect Power:** Plug the main power cord into the distiller and then into a standard 110V AC electrical outlet.

4. **Start Distillation:** Press the "Distilling Button" on the front of the unit. The indicator light will illuminate, indicating that the distillation process has begun.
5. **Collection:** Distilled water will begin to drip into the collection bottle after some time. The distillation process for 4 liters typically takes 3-4 hours.
6. **Automatic Shut-off:** The distiller will automatically shut off when the water in the boiling chamber has evaporated, or if the internal temperature exceeds 320°F (160°C). The indicator light will turn off.
7. **Cool Down:** Allow the unit to cool down for at least 30 minutes before attempting to open the lid or clean the chamber.
8. **Empty Collection Bottle:** Once cooled, remove the collection bottle and cap it for storage.
9. **Refill (Optional):** If more distilled water is needed, repeat the process after the unit has cooled.

## 7. CLEANING AND MAINTENANCE

---

Regular cleaning and maintenance ensure the longevity and efficiency of your distiller.

### 7.1 Daily Cleaning

- After each use, unplug the unit and allow it to cool completely.
- Empty any remaining water from the boiling chamber.
- Wipe the interior of the boiling chamber with a soft, damp cloth.
- Rinse the collection bottle and discharge cap with clean water.
- Do not use abrasive cleaners or scouring pads on any part of the distiller.

### 7.2 Descaling the Boiling Chamber

Mineral deposits (scale) will accumulate in the boiling chamber over time. Descale the chamber regularly (e.g., weekly or bi-weekly, depending on water hardness) using the provided cleaning powder or white vinegar.

1. Ensure the unit is unplugged and cooled.
2. Pour approximately 1 liter of water into the boiling chamber.
3. Add one packet of cleaning powder (or 1 cup of white vinegar) to the water.
4. Close the lid and let it soak for 30 minutes to 1 hour. For heavy scale, you may need to heat the solution for a short period (e.g., 10-15 minutes) by turning the unit on, then unplugging and letting it soak.
5. Carefully pour out the solution. Use a soft brush or cloth to scrub away any remaining scale.
6. Rinse the chamber thoroughly with clean water multiple times to remove all cleaning residue.

### 7.3 Activated Carbon Filter Replacement

Replace the activated charcoal sachet approximately every 2-3 months, or after 30-50 gallons of distilled water, to maintain optimal water quality.

- Remove the old sachet from the filter housing and discard it.
- Insert a new activated charcoal sachet into the filter housing.
- Ensure the filter is securely placed in the discharge cap.

## 8. TROUBLESHOOTING GUIDE

---

Refer to this guide for common issues and their solutions.

Problem	Possible Cause	Solution
---------	----------------	----------

Problem	Possible Cause	Solution
Distiller does not turn on.	No power supply. Unit overheated and shut off.	Check power cord connection and wall outlet. Allow unit to cool down completely before restarting.
No water or very little water is distilling.	Insufficient water in boiling chamber. Discharge cap or outlet blocked.	Ensure water level is above the minimum line. Check for blockages and clean if necessary.
Distilled water has an odor or taste.	Activated carbon filter needs replacement. Unit needs descaling.	Replace the activated charcoal sachet. Perform descaling procedure as per Section 7.2.
Unit leaks water.	Lid not properly sealed. Discharge cap not properly installed.	Ensure the lid is securely closed. Re-install the discharge cap firmly.

## 9. PRODUCT SPECIFICATIONS

Technical details for the ZOKOP ZB-1 Water Distiller:

- **Model:** ZB-1
- **Power:** 750W
- **Voltage:** 110V, 50/60Hz
- **Inner Container Volume:** 4 Liters (1.1 Gallons)
- **Degree of Evaporation:** 1 Liter/Hour
- **Fan Material:** Aluminum
- **Distiller Material:** Food-grade 304 Stainless Steel
- **Container Material:** Food-grade BPA-Free Plastic
- **Over-temperature Safety:** Auto-off when temperature is over 320°F (160°C)
- **Weight:** 4.8 kg (10.6 lbs)
- **Chamber Size:** 9.1" (Diameter) x 15.3" (Height) / 23 cm (Diameter) x 39 cm (Height)
- **Water Bottle Size:** 7.1" (Diameter) x 6.7" (Height) / 18 cm (Diameter) x 17 cm (Height)



Image: A visual representation of the ZOKOP ZB-1 Water Distiller and its accompanying collection bottle, with key dimensions indicated. The distiller unit measures 9.1 inches in width and 15.3 inches in height, while the collection bottle measures 7.1 inches in width and 6.7 inches in height.

## 10. WARRANTY AND CUSTOMER SUPPORT

ZOKOP products are manufactured to high-quality standards. For specific warranty information, please refer to the warranty card included with your purchase or visit the official ZOKOP website. If you encounter any issues or have questions regarding your ZB-1 Water Distiller, please contact our customer support team for assistance.

**Customer Support Contact:** Please refer to your purchase documentation or the ZOKOP official website for the most current contact information.



