

Baxi Duo-tec Compact E 24 A7722082

Baxi Duo-tec Compact E 24 Condensing Boiler User Manual

Model: A7722082

1. INTRODUCTION

This manual provides essential information for the safe and efficient operation, installation, and maintenance of your Baxi Duo-tec Compact E 24 condensing boiler (Model A7722082). Please read this manual thoroughly before attempting any installation, operation, or maintenance procedures. Retain this document for future reference.

2. SAFETY INFORMATION

Your Baxi Duo-tec Compact E 24 boiler is a gas appliance and must be installed, commissioned, serviced, and repaired by a qualified and competent professional in accordance with all local and national regulations. Failure to comply with these instructions can result in serious injury, property damage, or death.

- **Professional Installation:** Installation and initial setup must be performed by a certified technician.
- **Gas Safety:** If you smell gas, immediately shut off the gas supply, open windows, and contact emergency services. Do not operate any electrical switches.
- **Electrical Safety:** Ensure the boiler is properly earthed. Do not touch electrical components with wet hands.
- **Ventilation:** Ensure adequate ventilation as required by local regulations for gas appliances.
- **Children and Pets:** Keep children and pets away from the boiler during operation and maintenance.
- **Modifications:** Do not modify the boiler or its components. Use only genuine Baxi spare parts.

3. PRODUCT OVERVIEW

The Baxi Duo-tec Compact E 24 is a high-efficiency condensing boiler designed for central heating and domestic hot water production. It features a compact design, making it suitable for various installation environments, and operates on natural gas.



Figure 3.1: Front view of the Baxi Duo-tec Compact E 24 boiler. The digital display shows '43.0', indicating a temperature setting or current temperature. Below the display are several control buttons.



Figure 3.2: Angled view of the Baxi Duo-tec Compact E 24 boiler, highlighting its sleek, compact design and the integrated control panel.

Key Features:

- Condensing technology for high energy efficiency.
- 24 kW heating output, suitable for residential applications.
- Operates on natural gas.
- Compact dimensions for flexible installation.
- Includes a flue kit for exhaust gas management.
- Equipped with an electronic anti-freeze system for outdoor installations.

4. SETUP AND INSTALLATION

The Baxi Duo-tec Compact E 24 boiler is designed for wall-mounted installation. Due to its advanced features and gas connection requirements, installation must be carried out by a qualified and certified heating engineer.

4.1 Wall Mounting

The boiler is designed to be securely mounted on a suitable wall. The installation location should allow for proper ventilation, access for servicing, and connection to gas, water, and flue systems.

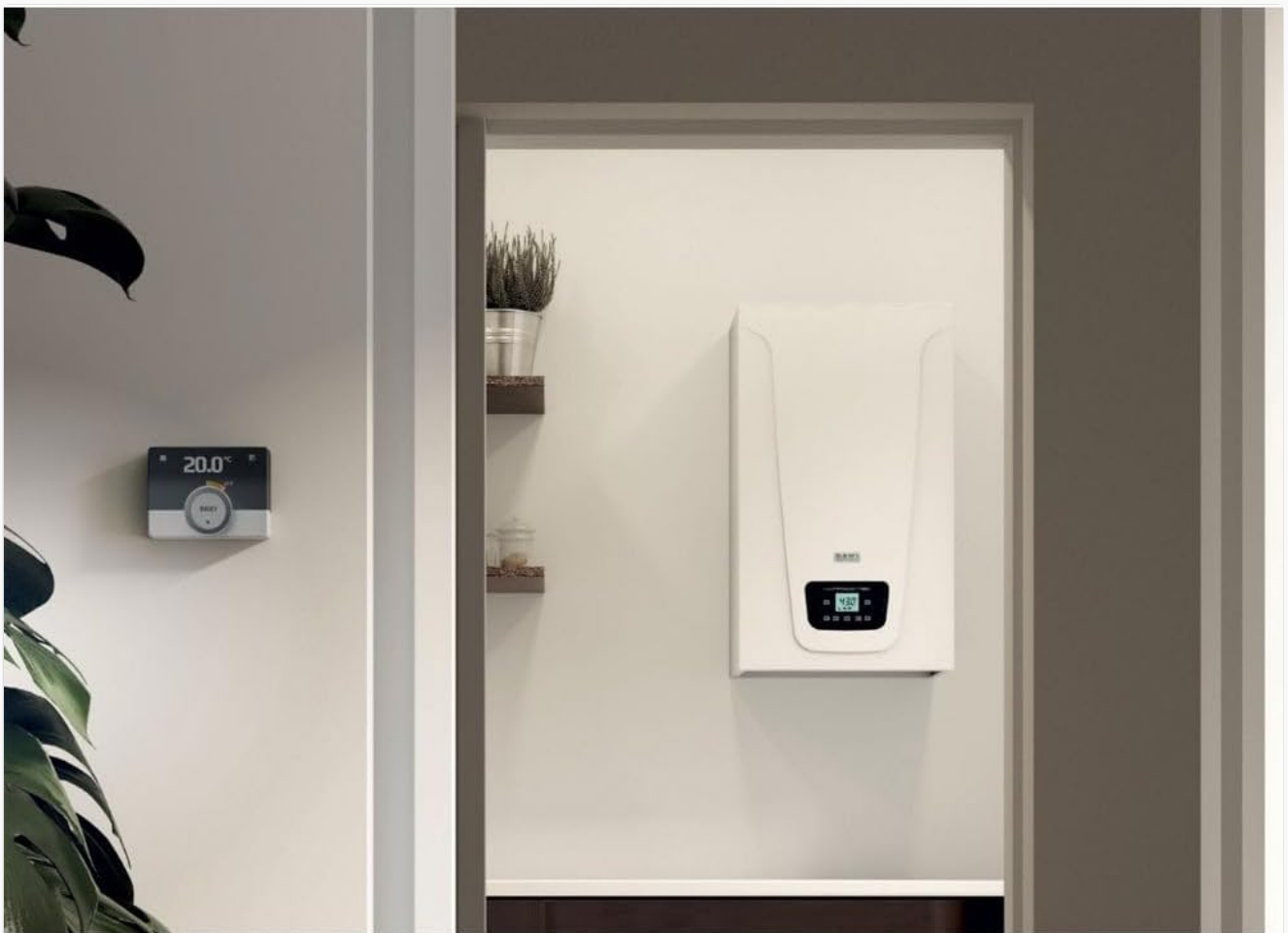


Figure 4.1: The Baxi Duo-tec Compact E 24 boiler installed on a wall, demonstrating a typical indoor setup. A room thermostat is visible nearby for temperature control.

4.2 Outdoor Installation

The Duo-tec Compact E boilers can be installed outdoors in partially protected areas. This is facilitated by a new upper cover kit and an optional lower closure kit. The boiler range is equipped as standard with an electronic anti-

freeze system that guarantees operation down to -5 °C. Furthermore, IPX5D protection safeguards electrical parts from water jets that may come from any direction.

Le caldaie **Duo-tec Compact E** possono essere installate all'esterno in **luoghi parzialmente protetti** grazie al nuovo kit di copertura superiore e al kit di chiusura inferiore (disponibili come accessori).

La gamma Duo-tec Compact E, infatti, è **dotata DI SERIE di un sistema antigelo elettronico** che garantisce il funzionamento fino alla temperatura di -5 °C: la protezione **IPX5D**, inoltre, tutela le parti elettriche da getti d'acqua che possono provenire da tutte le direzioni.



Figure 4.2: Exploded diagram illustrating the components for outdoor installation, including the new outdoor cover kit (comprising flue discharge kit and outdoor rosette) and the lower closure kit. An example of an outdoor installation on a balcony is also shown.

4.3 Flue System

The boiler includes a flue kit for the safe discharge of combustion gases. The flue system must be installed according to manufacturer instructions and local building codes to ensure proper and safe operation.

5. OPERATING INSTRUCTIONS

Once installed and commissioned by a qualified technician, your Baxi Duo-tec Compact E 24 boiler is ready for operation. The control panel allows you to adjust heating and domestic hot water settings.

5.1 Power On/Off

To power on the boiler, ensure the main electrical supply switch is in the 'ON' position. The boiler will typically perform a self-check. To power off, switch off the main electrical supply.

5.2 Temperature Adjustment

Use the control buttons on the front panel to adjust the desired temperature for central heating and domestic hot water. Refer to the specific icons on the control panel for heating and hot water functions. The digital display will show the current settings or operating temperatures.

5.3 Display Indicators

The digital display provides information on the boiler's status, current temperatures, and any error codes. Consult the full technical manual (provided by your installer) for a detailed explanation of all display indicators and error codes.

6. MAINTENANCE

Regular maintenance is crucial for the longevity, efficiency, and safe operation of your Baxi Duo-tec Compact E 24 boiler. All maintenance work, especially involving internal components, must be performed by a qualified service technician.

- **Annual Servicing:** It is recommended to have your boiler serviced annually by a Gas Safe registered engineer (or equivalent local certification).
- **Pressure Check:** Periodically check the system pressure gauge (usually located on or near the boiler). The pressure should typically be between 1 and 1.5 bar when the system is cold. If the pressure is consistently too low or too high, contact a technician.
- **Cleaning:** Keep the exterior of the boiler clean and free from obstructions. Do not use abrasive cleaners.
- **Ventilation:** Ensure that all ventilation openings are clear and unobstructed.



Figure 6.1: The boiler installed in a utility room, demonstrating how its compact size allows for integration into various household spaces, including those with other appliances.



Figure 6.2: The boiler discreetly installed within a kitchen cabinet, showcasing its ability to blend into modern living spaces due to its compact dimensions.

7. TROUBLESHOOTING

This section provides basic troubleshooting steps for common issues. For complex problems or if you are unsure, always contact a qualified service technician.

Common Issues and Solutions:

- **No Heat/Hot Water:**
 - Check if the boiler is powered on.
 - Verify the gas supply is open.
 - Check the system pressure; repressurize if too low (refer to your installer's instructions or the full technical manual).
 - Ensure the thermostat is set correctly and calling for heat.
- **Error Codes on Display:**
 - Note down the error code displayed.
 - Consult the full technical manual for the meaning of the code and recommended actions.
 - If the issue persists after basic troubleshooting, contact a qualified technician, providing them with the error code.
- **Unusual Noises:**

- Minor operational noises are normal.
- Loud or unusual banging, whistling, or grinding noises may indicate a problem. Contact a technician.

8. SPECIFICATIONS

Detailed technical specifications for the Baxi Duo-tec Compact E 24 boiler (Model A7722082).

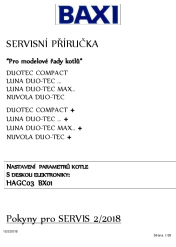
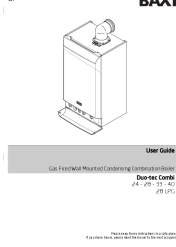

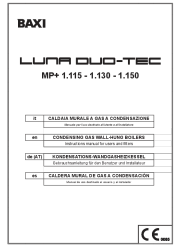
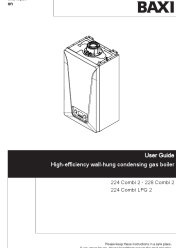
Specification	Detail
Manufacturer	Baxi
Model Number	A7722082
Dimensions (Package)	82 x 48 x 33 cm
Weight (Item)	34 kg
Color	White
Energy Source	Natural Gas
Power Output	24 kW
Mounting Type	Wall
Efficiency Rating	A
Special Features	Condensing boiler, Electronic anti-freeze system, IPX5D protection
First Available	February 21, 2020

9. WARRANTY AND SUPPORT

For warranty information, please refer to the documentation provided at the time of purchase or contact your installer. Baxi provides support through its authorized service network. In case of technical issues or service requests, please contact a qualified Baxi service partner.

© 2023 Baxi. All rights reserved. Information in this manual is subject to change without notice.

Related Documents - Duo-tec Compact E 24 A7722082

 <p>BAXI</p> <p>SERVISNÍ PŘÍRUČKA</p> <p>"Pro modelové řady built"</p> <p>DUOTEC COMPACT LUNA DUO-TEC LUNA DUO-TEC MAX NIVOLA DUO-TEC DUOTEC COMPACT + LUNA DUO-TEC - + LUNA DUO-TEC MAX - + NIVOLA DUO-TEC - +</p> <p>Нормативное наименование в сервисной документации НАЗОВИТЕ БИКСИ</p> <p>Polymy pro SERVIS 2/2018</p>	<p>Baxi Duotec Compact Service Manual</p> <p>This service manual provides detailed instructions for the maintenance, troubleshooting, and parameter settings of Baxi Duotec Compact boilers. It covers topics such as changing parameters, diagnosing faults, connecting relay boards, and replacing electronic components.</p>
 <p>BAXI</p> <p>User Guide</p> <p>Gas Fired Wall Mounted Condensing Combination Boiler</p> <p>Duo-tec Combi</p> <p>24 - 28 - 33 - 40 (28 LPG)</p>	<p>Baxi Duo-tec Combi User Guide: Installation, Operation, and Troubleshooting</p> <p>Comprehensive user guide for the Baxi Duo-tec Combi gas-fired wall-mounted condensing combination boiler, covering installation, operation, troubleshooting, warranty, and technical specifications. Includes model details for 24, 28, 33, 40, and 28 LPG variants.</p>
 <p>BAXI</p> <p>7 YEAR 10 YEAR 5 YEAR 2 YEAR</p> <p>Baxi range guide</p>	<p>Baxi Boiler Range Guide: Boilers, Specifications, and Installer Information</p> <p>Comprehensive guide to Baxi boilers, including the Baxi 200, 400, 600, and 800 series. Features, specifications, flue solutions, installer training, and support information.</p>
 <p>BAXI</p> <p>LUNA DUO-TEC</p> <p>MP+ 1.115 - 1.130 - 1.150</p> <p>CE</p>	<p>Baxi Luna Duo-tec MP+ Condensing Gas Wall-Hung Boiler User and Installer Manual</p> <p>Comprehensive user and installer manual for the Baxi Luna Duo-tec MP+ series condensing gas wall-hung boilers (models 1.115, 1.130, 1.150). Covers installation, operation, maintenance, safety, technical specifications, and troubleshooting.</p>
 <p>BAXI</p> <p>User Guide</p> <p>High-efficiency wall-hung condensing gas boiler</p> <p>224 Combi 2 - 228 Combi 2 224 Combi 2 LPG 2</p>	<p>Baxi 224/228 Combi 2 High-Efficiency Wall-Hung Condensing Gas Boiler User Guide</p> <p>Comprehensive user guide for Baxi 224 Combi 2, 228 Combi 2, and 224 Combi LPG 2 high-efficiency wall-hung condensing gas boilers, covering installation, operation, maintenance, troubleshooting, and warranty information.</p>



[Baxi Boiler Quick Start Guide: Operation, Warranty, and Troubleshooting](#)

A comprehensive quick start guide for Baxi boilers, covering operation, energy-saving tips, warranty registration and terms, annual servicing importance, system maintenance, troubleshooting common issues, and contact information.