

## BIGLIGHT B1830IR-AC

# BIGLIGHT LED Track Light B1830IR-AC Instruction Manual

Model: B1830IR-AC

## 1. PRODUCT OVERVIEW

---

The BIGLIGHT LED Track Light is a versatile accent lighting solution featuring three rotatable light heads, dimmable brightness, and remote control operation. Designed for various indoor applications, it provides warm white illumination with energy-efficient LED technology.



Figure 1: BIGLIGHT LED Track Light with included accessories.

## 2. KEY FEATURES

- **Remote Controlled & Dimmable:** Easily adjust brightness from 5% to 100% and control on/off functions with the included remote control (up to 20ft range).
- **Timer Function:** Set the spotlight to automatically turn off after 15, 30, 60, or 120 minutes for energy efficiency.
- **Adjustable Lighting Direction:** Three light heads can slide left to right along the track and rotate 310°, and swivel 180° to direct light precisely where needed.
- **Warm White Illumination:** Provides 500 lumens of 3000K warm white light.
- **Easy Installation:** Offers two mounting options: screw mounting or magnetic mounting with adhesive tapes.
- **AC Adapter Powered:** Operates via an AC adapter with a 6 ft power cord.



Figure 2: Overview of product specifications and control methods.

### 3. SPECIFICATIONS

<b>Brand</b>	BIGLIGHT
<b>Model Name</b>	Track Light (B1830IR-AC)
<b>Wattage</b>	5.5W
<b>Lumens</b>	500LM
<b>Color Temperature</b>	3000K Warm White
<b>Lifespan</b>	30,000 Hours
<b>Power Supply Input</b>	100-240V AC
<b>Power Supply Output</b>	5V DC 1.2A
<b>Product Dimensions</b>	15.75"L x 2.54"W x 2.52"H

<b>Item Weight</b>	1.15 Pounds
<b>Control Method</b>	Push Button, Remote Control (Infrared)
<b>Special Features</b>	Dimmable, Remote Controlled, Timer
<b>Material</b>	Plastic
<b>Indoor/Outdoor Usage</b>	Indoor

## SIZE

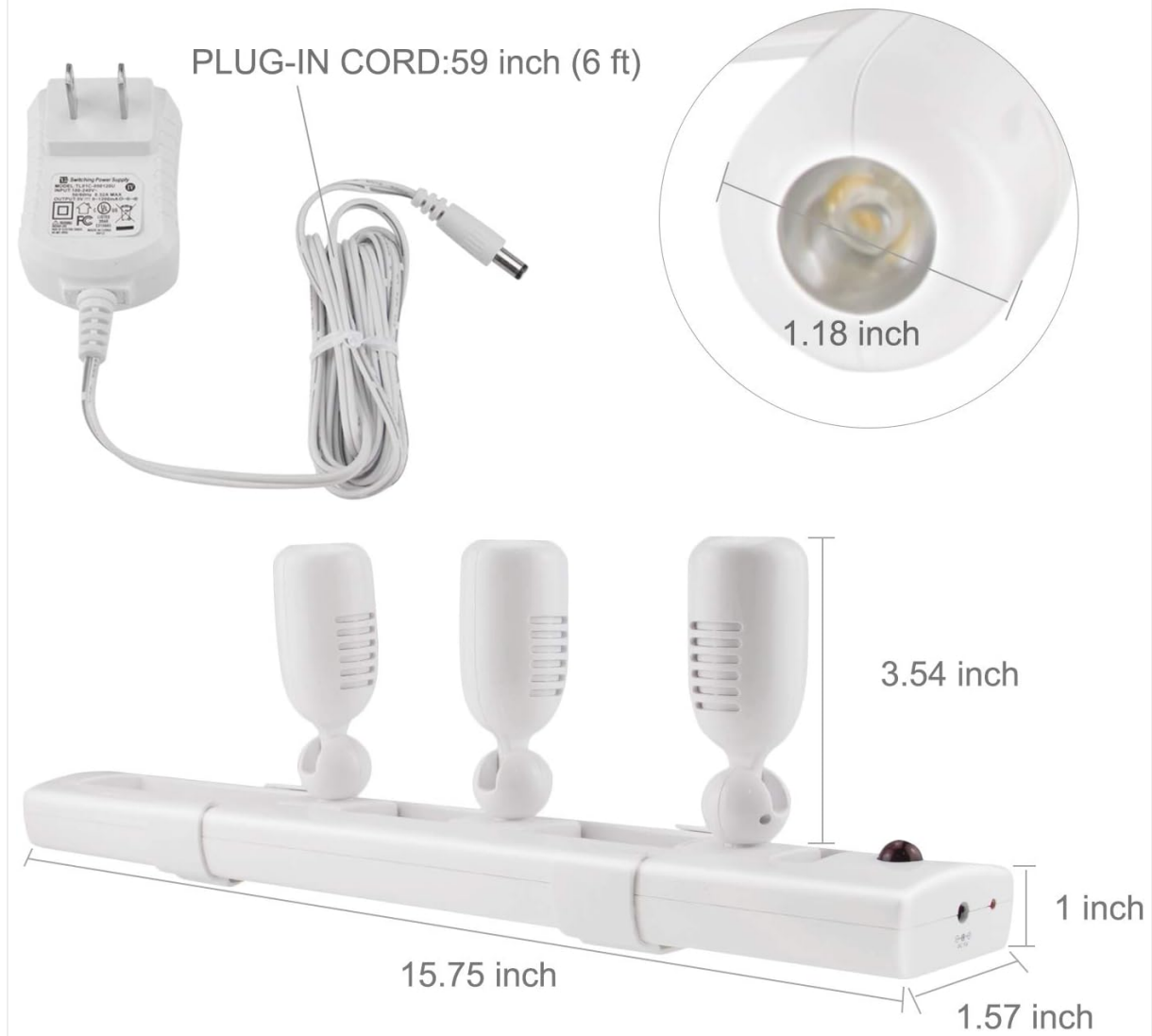


Figure 3: Product dimensions and power cord length.

## 4. WHAT'S IN THE BOX

- BIGLIGHT LED Track Light (Model B1830IR-AC)
- Remote Control
- AC Power Adapter (6 ft cord)
- Mounting Brackets
- Screws
- Double-sided Adhesive Tapes
- Metal Mounting Plates

## 5. SETUP AND INSTALLATION

---

The BIGLIGHT LED Track Light offers two primary installation methods: screw mounting for a permanent fixture or magnetic mounting for flexible placement.

### 5.1. Screw Mounting

1. Identify the desired mounting location. Ensure the surface is suitable for drilling.
2. Position the mounting brackets on the surface and mark the screw holes.
3. Drill pilot holes if necessary.
4. Secure the mounting brackets using the provided screws.
5. Snap the track light into the secured mounting brackets.

### 5.2. Magnetic Mounting

1. Clean the desired mounting surface thoroughly to ensure proper adhesion.
2. Attach the double-sided adhesive tapes to the metal mounting plates.
3. Adhere the metal mounting plates to the cleaned surface at the desired locations.
4. The track light has built-in magnets. Align these magnets with the attached metal plates to secure the light.

**Note:** For optimal magnetic adhesion, ensure the surface is flat and clean. For heavier or frequently moved applications, screw mounting is recommended.



Figure 4: Illustration of magnetic and screw mounting options.

# INSTALLATION METHODS

## Option 1 - Magnetic Mounting

## Option 2 - Screw Mounting

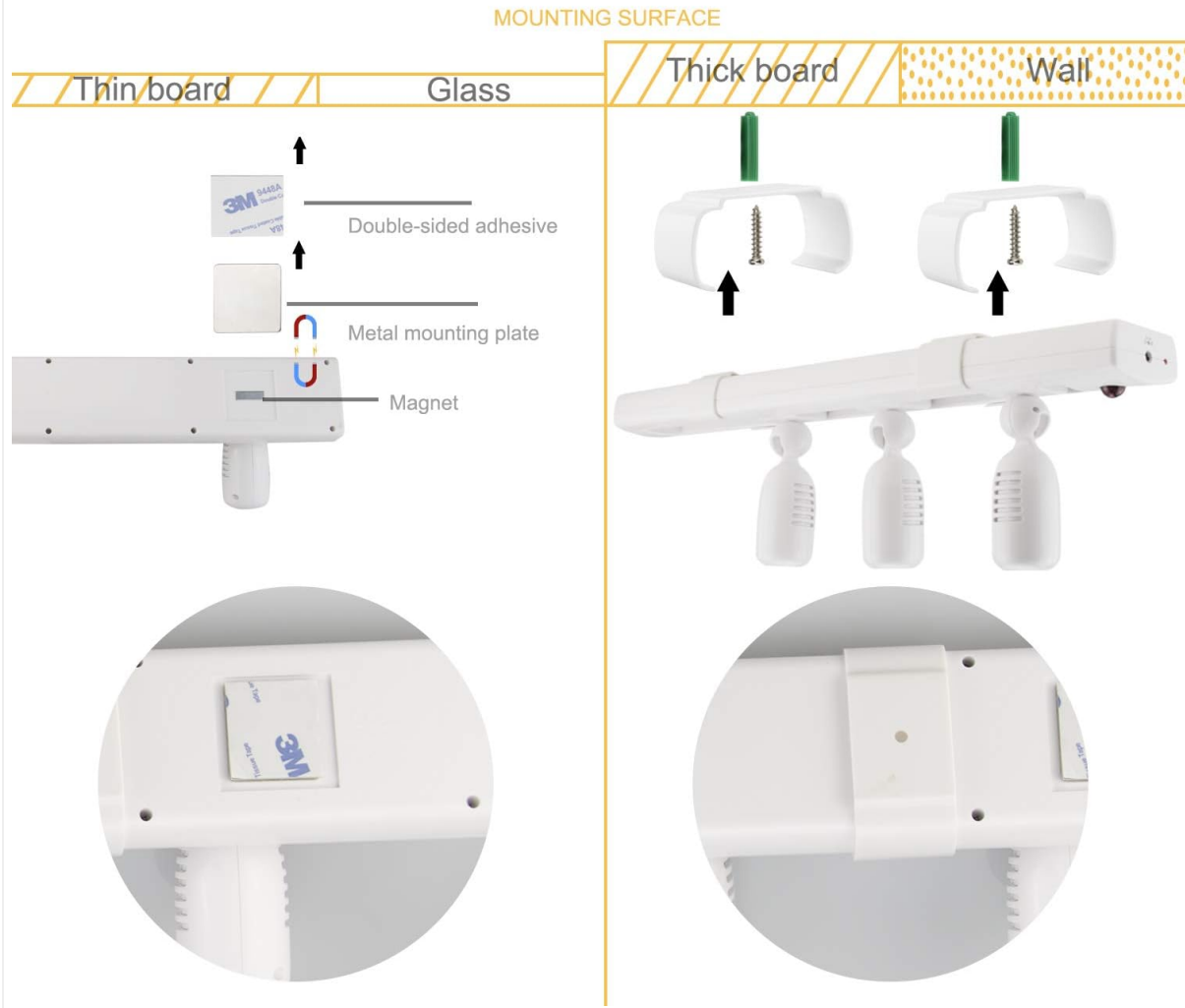


Figure 5: Detailed view of track light components and adjustability.

### 5.3. Power Connection

Once mounted, connect the AC power adapter to the DC 5V input port on the track light. Plug the adapter into a standard 100-240V AC outlet. A small red LED indicator next to the power port will illuminate to confirm power is supplied.

## 6. OPERATING INSTRUCTIONS

The BIGLIGHT LED Track Light can be operated using the integrated push-button switch or the included remote control.

### 6.1. Manual Operation (Push Button)

- Locate the push-button switch on the track light, adjacent to the power jack.
- Press the button once to turn the lights ON.
- Press the button again to turn the lights OFF.

### 6.2. Remote Control Operation

The remote control provides full functionality, including on/off, dimming, and timer settings.

- **Power ON/OFF:** Press the **ON** button to turn the lights on, and the **OFF** button to turn them off.

- **Brightness Adjustment:**
  - Press + to increase brightness.
  - Press - to decrease brightness.
  - Use the **50%** or **100%** buttons for instant brightness levels.
- **Timer Function:** Press the **15, 30, 60,** or **120** minute buttons to set an automatic shut-off timer. The lights will flash briefly to confirm the timer is set.
- **Memory Function:** The remote control remembers the last brightness setting when turned off and on via the remote.



Figure 6: Control options for the track light.

### 6.3. Adjusting Light Heads

The three light heads can be adjusted to direct illumination as needed:

- **Slide Adjustment:** The light heads can slide horizontally along the track to adjust their spacing.
- **Rotation:** Each light head can rotate 310° to point in various directions.
- **Swivel:** Each light head can swivel 180° vertically.

## 7. MAINTENANCE

## 7.1. Cleaning

To clean the track light, ensure it is unplugged from the power source. Use a soft, dry cloth to wipe down the surface. Avoid using abrasive cleaners or solvents, as these may damage the finish.

## 7.2. Remote Control Battery Replacement

If the remote control stops responding, the battery may need replacement. It uses one CR2025 button cell battery. To replace:

1. Locate the battery compartment on the back of the remote control.
2. Open the compartment.
3. Remove the old CR2025 battery.
4. Insert a new CR2025 battery, ensuring correct polarity (+ side up).
5. Close the battery compartment securely.

## 8. TROUBLESHOOTING

Problem	Possible Cause	Solution
Lights do not turn on.	No power supply; loose connection; remote control battery depleted.	Ensure the AC adapter is securely plugged into the track light and a working power outlet. Check if the power outlet is functional. Replace the remote control battery (CR2025) if using the remote. Try using the manual push-button switch on the track light.
Remote control is not working.	Remote control battery depleted; obstruction between remote and light; remote out of range.	Replace the CR2025 battery in the remote control. Ensure there are no objects blocking the line of sight between the remote and the track light's IR receiver. Move closer to the track light (within 20ft range).
Lights are dim or flickering.	Brightness setting too low; power supply issue; product malfunction.	Increase brightness using the remote control's '+' button or the 100% button. Ensure the power adapter is providing stable power. If the issue persists, contact customer support.
Magnetic mounting is not holding securely.	Surface not clean; uneven surface; excessive weight/movement.	Clean the mounting surface thoroughly before applying adhesive plates. Ensure the surface is flat and smooth. For more secure installation, consider using the screw mounting method.

## 9. WARRANTY AND SUPPORT

---

For warranty information or technical support, please refer to the contact details provided with your purchase or visit the official BIGLIGHT website. Please retain your proof of purchase for any warranty claims.