

Manuals+

[Q & A](#) | [Deep Search](#) | [Upload](#)

Manuals.plus /

› [Dragonhawk](#) /

› DRAGONHAWK Atom M1 Rotary Tattoo Pen Kit User Manual

Dragonhawk JCTS1

DRAGONHAWK Atom M1 Rotary Tattoo Pen Kit User Manual

Model: JCTS1

1. PRODUCT OVERVIEW

The DRAGONHAWK Atom M1 Rotary Tattoo Pen Kit is designed for both beginners and experienced artists, offering a complete solution for tattooing. This kit includes a rotary tattoo pen, power supply, cartridge needles, and essential accessories to facilitate various tattoo art styles.



Image 1.1: Complete DRAGONHAWK Atom M1 Tattoo Pen Kit components.

Kit Contents:

- 1x DRAGONHAWK Atom M1 Rotary Tattoo Pen with RCA cord
- 1x Power Supply with cable
- 20x Cartridge Needles (various configurations)
- 1x Foot Pedal
- 1x Bandage
- Additional items may include stencil paper, practice skin, and black ink (5ml).



Image 1.2: Detailed view of the DRAGONHAWK tattoo kit contents, including the pen, power supply, foot pedal, ink, and needles.

2. SAFETY INFORMATION

Operating tattoo equipment requires strict adherence to safety and hygiene protocols to prevent infection and ensure user and client well-being. This kit is intended for professional use or for individuals undergoing professional training. Always consult with a qualified professional before performing any tattooing procedures.

- **Sterilization:** Ensure all equipment that comes into contact with skin or ink is properly sterilized before and after each use. Use new, individually packaged needles for every procedure.
- **Clean Environment:** Perform tattooing in a clean, sterile environment. Disinfect all surfaces and wear appropriate personal protective equipment (PPE), including gloves.
- **Skin Preparation:** The area to be tattooed must be thoroughly cleaned and shaved if necessary. Use an antibacterial soap for skin preparation.
- **Ink Quality:** While the kit includes ink, it is recommended to use high-quality, reputable tattoo inks for procedures on human skin. Some inks may cause allergic reactions.
- **Needle Depth:** Incorrect needle depth can cause skin damage or poor ink retention. Practice on synthetic skin

before tattooing on human skin.

- **Power Supply:** Use only the provided power supply and ensure all connections are secure to prevent electrical hazards.
- **Disposal:** Dispose of used needles and other contaminated materials in appropriate sharps containers and biohazard waste bags according to local regulations.
- **Health Considerations:** Do not tattoo individuals with compromised immune systems, skin conditions, or those who are pregnant or breastfeeding without professional medical advice.

3. SETUP INSTRUCTIONS

Follow these steps to correctly set up your DRAGONHAWK Atom M1 Tattoo Pen Kit:

1. **Prepare Your Workspace:** Ensure your workspace is clean, disinfected, and well-lit. Lay out all necessary sterile equipment.
2. **Connect the Power Supply:**
 - Connect the power supply cable to the power supply unit.
 - Plug the power supply into a suitable electrical outlet.
3. **Connect the Foot Pedal:**
 - Plug the foot pedal into the designated port on the power supply unit.
4. **Connect the Tattoo Pen:**
 - Attach the RCA cord to the RCA socket on the DRAGONHAWK Atom M1 rotary tattoo pen.
 - Connect the other end of the RCA cord to the power supply unit.

POWERFUL MOTOR

THE MOTOR IS HIDDEN WITHIN MACHINE

SUITABLE FOR VARIOUS TATTOO STYLES



Image 3.1: Close-up of the RCA socket on the tattoo pen, illustrating the connection point for the power cable.

5. Attach a Cartridge Needle:

- Carefully unpackage a sterile cartridge needle.
- Insert the cartridge needle into the front of the tattoo pen, twisting gently until it locks securely into place.

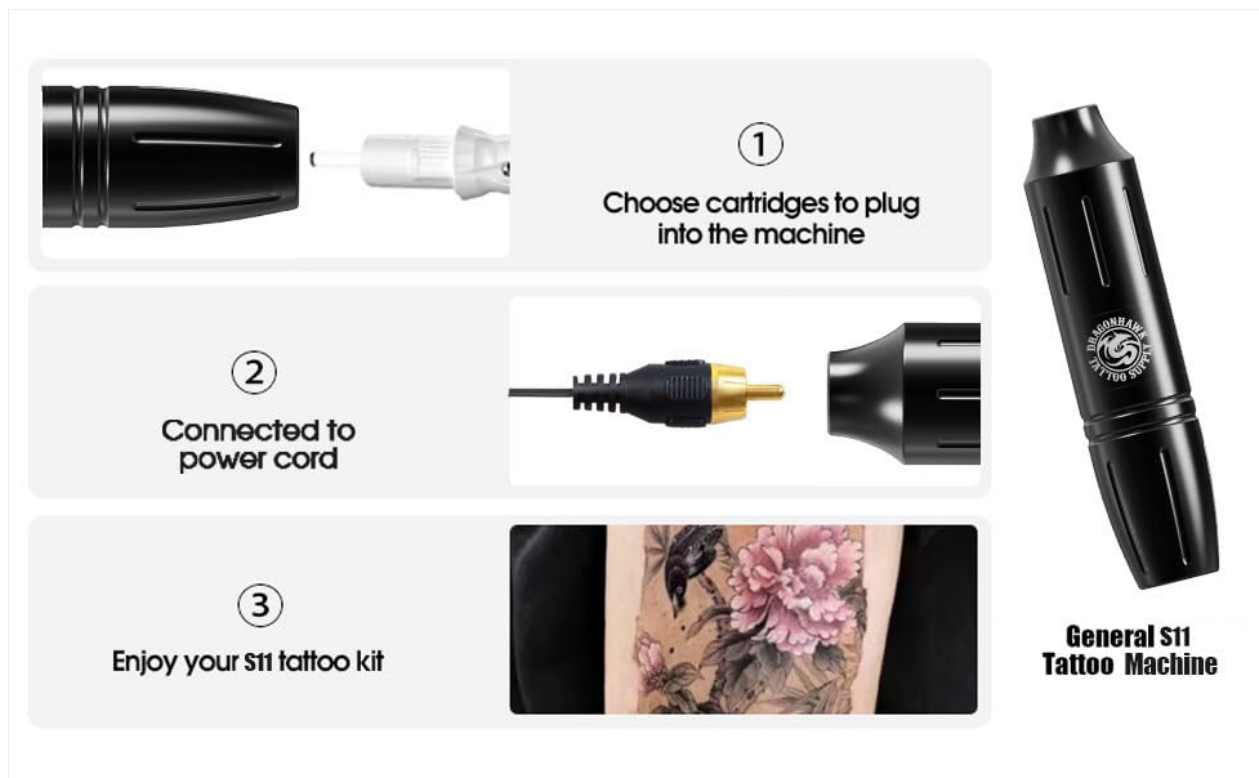


Image 3.2: Visual guide for connecting the cartridge, power cord, and preparing the tattoo pen for use.

6. Adjust Needle Length:

- Rotate the grip of the tattoo pen to adjust the needle protrusion (length) to your desired setting. The stroke length is fixed at 3.5mm, but needle depth can be adjusted.

PARAMETERS



Diameter&Length: 22mm*112mm 0.87inch*4.4inch

Weight: 148g

Stroke: 3.5mm

Speed: 8V/6500PRM

Connect cord: RCA

Image 3.3: Demonstrates rotating the pen grip to adjust the needle length for optimal tattooing.

4. OPERATING INSTRUCTIONS

Once the kit is set up, you can begin operating the tattoo pen:

1. **Power On:** Turn on the power supply unit. The display will show the current voltage.
2. **Adjust Voltage:** Use the controls on the power supply to set the desired working voltage. The recommended working voltage for the Atom M1 is typically between 6-8V.
3. **Dip Needle:** Dip the tip of the cartridge needle into your sterile tattoo ink cap, allowing the ink to be drawn into the cartridge reservoir.
4. **Begin Tattooing:** Press the foot pedal to activate the tattoo pen. The needle will begin to move. Release the foot pedal to stop the pen.
5. **Practice:** It is highly recommended to practice on synthetic skin or fruit before attempting to tattoo on human skin to familiarize yourself with the machine's feel, needle depth, and ink flow.



Image 4.1: Illustration of the powerful motor within the tattoo pen, operating at 8V/6500RPM for consistent performance.

Cartridge Needle Information:

The kit includes various cartridge needles designed for different tattooing purposes. These cartridges feature a medical-grade frame and thin-walled technology for optimal performance.



Perfect Membrane
Tension

Perfect Taper
Needles

Thin Profile
Mold Innovation

THIN -WALLED TECHNOLOGY

Needles and Tubes
Same Shape

Image 4.2: Close-up of cartridge needles featuring an LG PC medical frame, ensuring hygiene and precision.

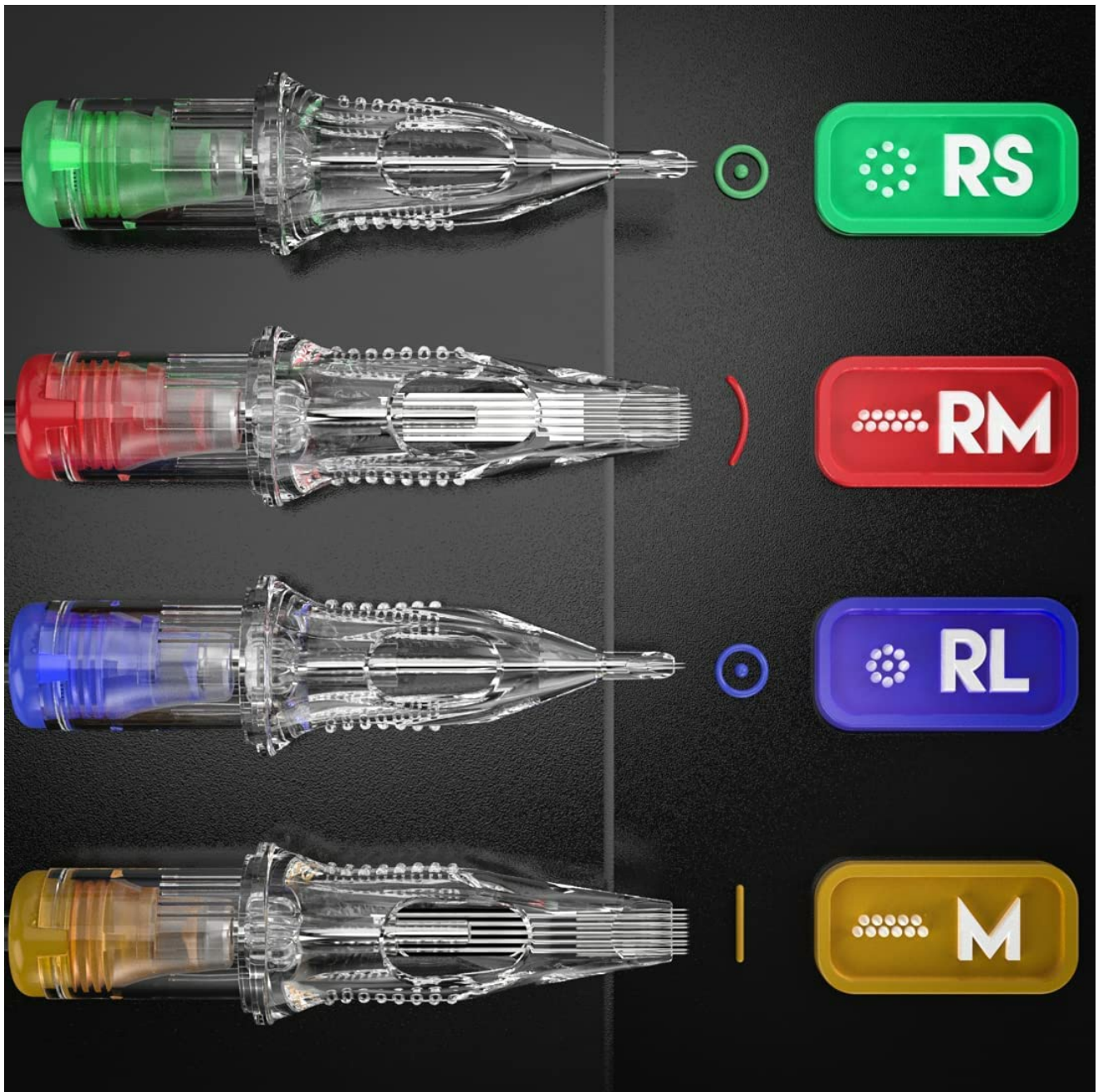


Image 4.3: Cartridge needles showcasing thin-walled technology and perfect membrane tension for consistent ink flow.

5. MAINTENANCE

Proper maintenance ensures the longevity and safe operation of your tattoo equipment.

- **Cleaning the Tattoo Pen:** After each use, disconnect the pen from the power supply. Wipe down the exterior of the pen with a disinfectant wipe. Do not submerge the pen in liquid.
- **Needle Disposal:** Always dispose of used cartridge needles immediately into a designated sharps container. Never reuse needles.
- **Power Supply and Cables:** Keep the power supply and cables clean and dry. Inspect cables regularly for any signs of wear or damage. Replace damaged cables immediately.
- **Storage:** Store all components of the kit in a clean, dry, and secure location away from dust and moisture.
- **Deep Cleaning/Service:** For detailed maintenance procedures or if you suspect an internal issue, refer to official DRAGONHAWK resources or contact customer support.

For additional video tutorials and maintenance tips, visit the official Dragonhawk YouTube channel:

[Youtube.com/@Dragonhawkofficial](https://www.youtube.com/@Dragonhawkofficial).

6. TROUBLESHOOTING

If you encounter issues with your DRAGONHAWK Atom M1 Tattoo Pen Kit, refer to the following common problems and solutions:

Problem	Possible Cause	Solution
Tattoo pen not turning on or inconsistent power.	Loose cable connection, faulty power supply, damaged RCA cord.	<ul style="list-style-type: none">◦ Check all cable connections (power supply to outlet, RCA to pen, RCA to power supply, foot pedal to power supply).◦ Ensure the power supply is switched on.◦ Inspect the RCA cord for any visible damage. If damaged, replace it.◦ Test with a different power outlet.
Needle not moving or weak operation.	Low voltage setting, improperly seated cartridge, motor issue.	<ul style="list-style-type: none">◦ Increase the voltage on the power supply.◦ Ensure the cartridge needle is fully and correctly seated in the pen.◦ Check if the motor sounds unusual or is struggling. If so, contact support.
Ink not flowing properly.	Clogged needle, insufficient ink in reservoir, incorrect needle depth.	<ul style="list-style-type: none">◦ Ensure the needle is properly dipped into the ink cap.◦ Replace the cartridge needle with a new one.◦ Adjust needle depth.

If the problem persists after attempting these solutions, please contact DRAGONHAWK customer support for further assistance.

7. SPECIFICATIONS

Key technical specifications for the DRAGONHAWK Atom M1 Rotary Tattoo Pen:

- **Model:** JCTS1 (Atom M1)
- **Pen Dimensions (Diameter & Length):** 22mm x 112mm (0.87 inches x 4.4 inches)
- **Pen Weight:** 148g (0.33 lbs)
- **Stroke Length:** 3.5mm
- **Working Voltage:** 6-8V (Recommended)
- **RPM:** 6500 RPM at 8V
- **Connection:** RCA Cord
- **Manufacturer:** DRAGONHAWK
- **Color:** Black
- **Water Resistance Level:** Water Resistant (Note: Not waterproof. Avoid submersion.)



LG PC MEDICAL FRAME

Needles and Tubes
Same Shape

Image 7.1: Visual representation of the DRAGONHAWK Atom M1 tattoo pen with its key parameters.

8. WARRANTY & SUPPORT

DRAGONHAWK provides warranty coverage for its products:

- **Tattoo Gun and Power Supply:** 12-month warranty from the date of purchase.
- **Tattoo RCA Cord and Foot Pedal:** 6-month warranty from the date of purchase.

Free replacement or repair is offered for items under warranty. For any inquiries, warranty claims, or technical support, please reach out through Amazon's messaging system. DRAGONHAWK's customer service team is available to assist with any issues.

