

CHACON 54670

Chacon Set of 2 Mini On/Off Type E Plugs - User Manual

Model: 54670

1. INTRODUCTION

Thank you for choosing the Chacon Set of 2 Mini On/Off Type E Plugs. This product allows you to wirelessly control your electrical appliances, such as lamps, fans, or other compatible devices, with a convenient remote control. Please read this manual carefully before installation and use to ensure proper operation and safety.



Image 1.1: The Chacon Set of 2 Mini On/Off Type E Plugs with its remote control.

2. SAFETY INSTRUCTIONS

- Do not exceed the maximum load of 2300W (10A) per plug.
- Ensure the plugs are used in dry indoor environments only. Avoid exposure to water or high humidity.
- Do not disassemble or modify the product. This may void the warranty and pose safety risks.
- Keep out of reach of children.
- Always unplug devices before cleaning the smart plug.
- If the product is damaged, discontinue use immediately and contact customer support.

3. PACKAGE CONTENTS

- 2 x Chacon Mini On/Off Type E Plugs
- 1 x Remote Control
- 1 x CR2032 Lithium-ion Battery (pre-installed in remote)
- 1 x User Manual (this document)

4. PRODUCT OVERVIEW

The Chacon mini plugs are designed for ease of use and discreet integration into your home. Each plug features a manual on/off button and an indicator LED. The remote control allows for individual or group control of up to 4 channels.



Image 4.1: Remote control and a single mini plug, illustrating their compact design.

4.1. Mini Plug Components

- **Type E Socket:** Front-facing socket for connecting your appliance.
- **Type E Plug:** Rear-facing plug for insertion into a wall outlet.
- **Pairing/Manual Button:** Small button on the side for pairing and manual on/off control.
- **LED Indicator:** Light to show power status and pairing mode.



Image 4.2: Front view of the mini plug, highlighting the Type E socket.



Image 4.3: Back view of the mini plug, showing the Type E pins for wall insertion.

4.2. Remote Control Components

- **ON/OFF Buttons:** Separate buttons for turning devices on and off.
- **Channel Buttons (1-4):** Buttons to select and control specific channels.
- **Group ON/OFF Button:** A single button to control all paired devices simultaneously (if applicable).
- **LED Indicator:** Light to confirm signal transmission.



Image 4.4: Detailed view of the remote control buttons and layout.

5. SETUP

5.1. Inserting/Replacing Remote Battery

The remote control comes with a pre-installed CR2032 Lithium-ion battery. If replacement is needed:

1. Locate the battery compartment on the back of the remote control.
2. Open the compartment cover.
3. Remove the old battery and insert a new CR2032 battery with the positive (+) side facing up.
4. Close the battery compartment securely.

5.2. Pairing the Plugs with the Remote Control

Each plug needs to be paired with the remote control to function wirelessly. You can assign each plug to a specific channel (1-4) on the remote.

1. Plug the Chacon mini plug into a wall outlet. The LED indicator on the plug will light up.
2. Press and hold the small pairing/manual button on the side of the plug for approximately 3 seconds until the LED indicator starts flashing rapidly.



Image 5.1: Location of the pairing/manual button on the side of the mini plug.

3. Within 10 seconds of the LED flashing, press the desired 'ON' button (e.g., '1 ON') on the remote control. The plug's LED will stop flashing and remain steadily lit, indicating successful pairing.
4. Repeat this process for the second plug, assigning it to a different channel (e.g., '2 ON') or the same channel if you wish to control both simultaneously with one button.
5. To pair additional plugs (if purchased separately), repeat the steps, assigning them to channels 3 or 4.

5.3. Connecting an Appliance

Once paired, plug your desired electrical appliance into the front socket of the Chacon mini plug. Ensure the appliance's power switch is in the 'ON' position if it has one, so it can be controlled by the smart plug.



Image 5.2: A Chacon mini plug installed in a wall outlet with an appliance connected.

6. OPERATING

6.1. Basic On/Off Control

- To turn on an appliance connected to a specific channel, press the corresponding 'ON' button (e.g., '1 ON') on the remote control.
- To turn off an appliance, press the corresponding 'OFF' button (e.g., '1 OFF') on the remote control.

6.2. Group Control

If you have multiple plugs paired to different channels, you can use the group ON/OFF button (often labeled with a master ON/OFF symbol or 'ALL ON/OFF') to control all paired plugs simultaneously.

6.3. Manual Control

Each mini plug has a manual button on its side. Pressing this button will toggle the power state of the connected appliance (ON/OFF) directly at the plug, independent of the remote control.

7. MAINTENANCE

7.1. Cleaning

To clean the plugs and remote control, use a soft, dry cloth. Do not use liquid cleaners, aerosols, or solvents, as these may damage the product or cause electrical hazards. Ensure the plugs are disconnected from power before cleaning.

7.2. Battery Replacement

Refer to Section 5.1 for instructions on replacing the remote control battery. Replace the battery when the remote's LED indicator no longer lights up or its range decreases significantly.

8. TROUBLESHOOTING

Problem	Possible Cause	Solution
---------	----------------	----------

Problem	Possible Cause	Solution
Appliance does not turn ON/OFF via remote.	Plug not paired with remote. Remote battery is low or dead. Appliance power switch is OFF. Plug is out of range.	Re-pair the plug (see Section 5.2). Replace the remote battery (see Section 5.1). Ensure the appliance's power switch is ON. Move the remote closer to the plug.
Plug LED does not light up.	No power to the wall outlet. Plug is faulty.	Check the wall outlet with another device. Contact customer support.
Remote LED does not light up when buttons are pressed.	Remote battery is low or dead.	Replace the remote battery (see Section 5.1).
Limited remote control range.	Obstructions (walls, furniture). Interference from other devices. Low remote battery.	Reduce obstructions between remote and plug. Move away from other electronic devices. Replace the remote battery (see Section 5.1).



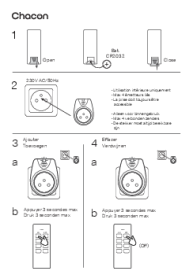

9. SPECIFICATIONS

- **Model Number:** 54670
- **Brand:** CHACON
- **Power Rating:** 2300 Watts maximum
- **Amperage:** 16 A
- **Plug Type:** Type E (2 pins, European standard)
- **Material:** Plastic
- **Color:** White
- **Dimensions (L x W x H):** 17 x 7 x 9.5 cm (product packaging); 240 grams (total weight)
- **Remote Battery:** 1 x CR2032 Lithium-ion (included)
- **Compatible Devices:** Lamps, Tablets, Clocks, Fans, MP3 Players, Smartphones, Laptops, and other small appliances within power limits.
- **Country of Origin:** China

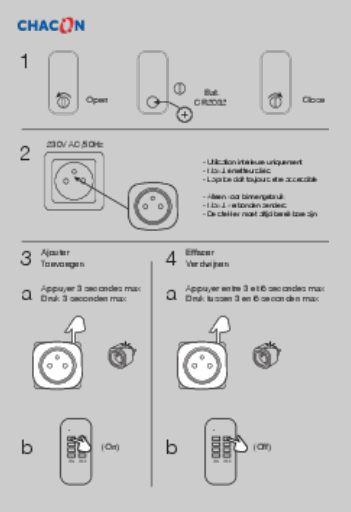
10. WARRANTY AND SUPPORT

Chacon products are designed for reliability and performance. For information regarding warranty terms, technical support, or spare parts availability, please refer to the official Chacon website or contact your retailer. Keep your proof of purchase for warranty claims.

Related Documents

	<p>Chacon Wi-Fi Timer User Manual (53022/53023)</p> <p>User manual for the Chacon Wi-Fi Timer plug (models 53022 and 53023), detailing setup, usage, troubleshooting, and technical specifications. Compatible with My Chacon and DiO one apps, and voice control via Google Home and Amazon Alexa.</p>
	<p>DiO 1.0 Wireless Switch Installation and User Manual Chacon</p> <p>Comprehensive guide for installing and using the DiO 1.0 wireless switch (model 54717-v2) by Chacon. Learn about pairing, battery replacement, troubleshooting, and technical specifications.</p>
	<p>Chacon Remote Control Socket User Manual and Specifications</p> <p>User manual and technical specifications for Chacon remote control sockets, including setup, usage, and safety information. Covers models 54661, 54662, 54663, and 54664.</p>
	<p>Chacon All-in-One Alarm System User Manual</p> <p>This user manual provides comprehensive guidance for the Chacon All-in-One Alarm System (Model 34045), covering installation, operation, troubleshooting, and technical specifications for effective home security.</p>

Documents - CHACON – 54670

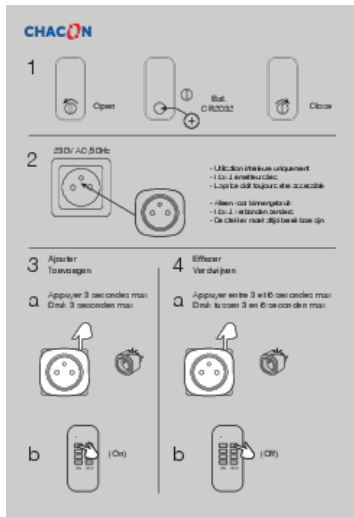


[\[pdf\]](#) User Manual Declaration of Conformity

54670 54671 ME 200207 user manual chacon datasharing doc

1 Open Bat. CR2032 Close 2 230V AC/50Hz - Utilisation intérieure uniquement - Max 4 metteurs lis ... des dispositions rglementaires. Le soussign, Chacon, dclare que l quipement radioelectrique du type **54670-54671** est conforme la Directive 2014/53/UE. Le texte complet de la dclaration UE de conformit...

lang:fr score:42 filesize: 413.49 K page_count: 2 document date: 2020-02-07



[pdf] Specifications

54670 54671 ME 200207 Bekijk de handleiding Chacon 2 draadloze stekkers met afstandsbediening

Type E penaaarde geschikt bol original media s x7LVrjM4MLj9 |||

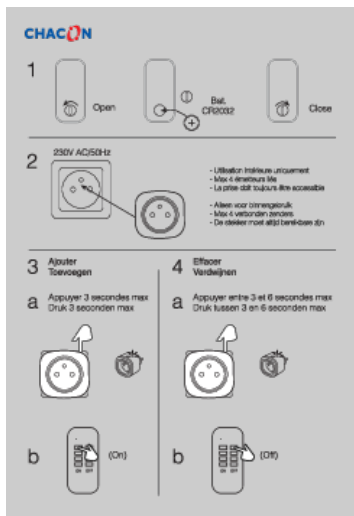
1 Open Bat. CR2032 Close 2 230V AC/50Hz - Utilisation intrieure uniquement - Max 4

metteurs lis ... des dispositions rglementaires. Le soussign, Chacon, dclare que l

quipement radioelectrique du type **54670-54671** est conforme la Directive 2014/53/UE.

Le texte complet de la dclaration UE de conformit...

lang:fr score:28 filesize: 85.74 K page_count: 2 document date: 2021-10-18



[pdf] User Manual Declaration of Conformity

54670 54671 ME 180920 user manual chacon datasharing doc

...

lang:fr score:26 filesize: 1.54 M page_count: 2 document date: 2018-10-02

