

manuals.plus /

› **EUHOMY** /

› **EUHOMY Mini Fridge with Freezer User Manual**

## EUHOMY CRF006-31

# EUHOMY Mini Fridge with Freezer

Model: CRF006-31

## 1. INTRODUCTION

---

Thank you for choosing the EUHOMY Mini Fridge with Freezer. This compact 3.2 Cu.Ft refrigerator is designed for versatile use in bedrooms, dorms, offices, or apartments, offering both refrigeration and freezing capabilities. Please read this manual thoroughly before operation to ensure proper use, maintenance, and safety.



Figure 1: EUHOMY 3.2 Cu.Ft Mini Fridge with Freezer (Silver)

## 2. SAFETY INFORMATION

---

To reduce the risk of fire, electric shock, or injury when using your refrigerator, follow these basic precautions:

- Read all instructions before using the appliance.
- Do not store explosive substances such as aerosol cans with a flammable propellant in this appliance.
- This appliance is intended for household use only.
- Keep ventilation openings, in the appliance enclosure or in the built-in structure, clear of obstruction.
- Do not use mechanical devices or other means to accelerate the defrosting process, other than those recommended by the manufacturer.
- Do not damage the refrigerant circuit.
- Do not use electrical appliances inside the food storage compartments of the appliance, unless they are of the type recommended by the manufacturer.
- Dispose of the refrigerator according to local regulations as it contains flammable refrigerant and gas.

### 3. PRODUCT OVERVIEW AND FEATURES

---

#### 3.1 Dual Zone Design

The EUHOMY mini fridge features a convenient two-door design, combining a freezer and a refrigerator compartment. This allows for simultaneous storage of frozen items and fresh produce.

- **Freezer Zone:** 0.96 Cu.Ft capacity, ideal for ice cream and frozen foods.
- **Fridge Zone:** 2.24 Cu.Ft capacity, perfect for fresh fruits, vegetables, and refrigerated drinks.

# 3.2<sup>CU.FT</sup>

Compact size but large capacity

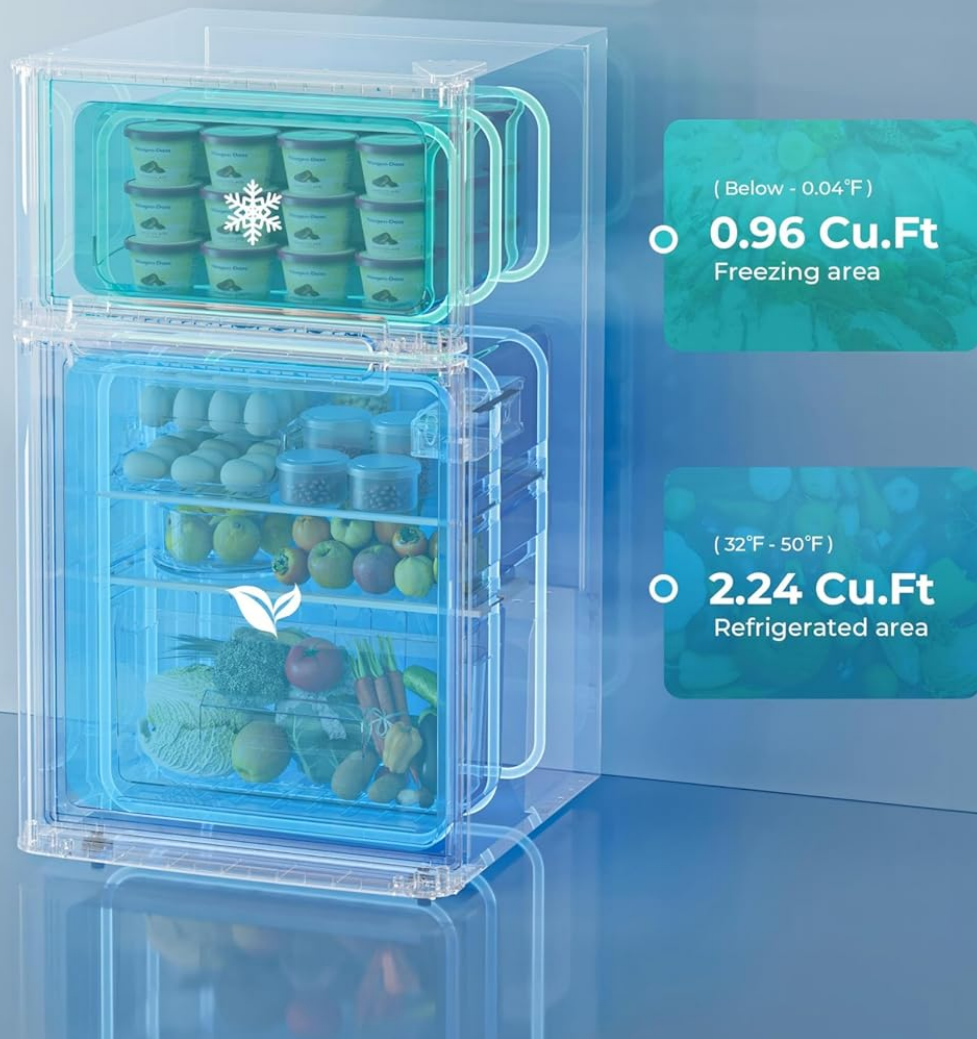
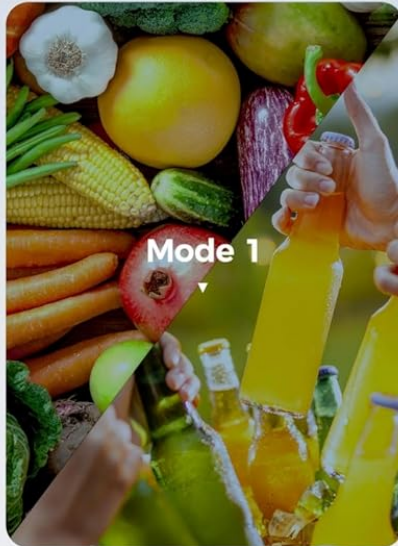


Figure 2: Capacity Breakdown (0.96 Cu.Ft Freezer, 2.24 Cu.Ft Refrigerator)

### 3.2 Temperature Control

Equipped with advanced 3D refrigeration technology, this mini refrigerator offers 3 temperature settings for precise cooling. A powerful compressor ensures efficient operation with minimal noise.

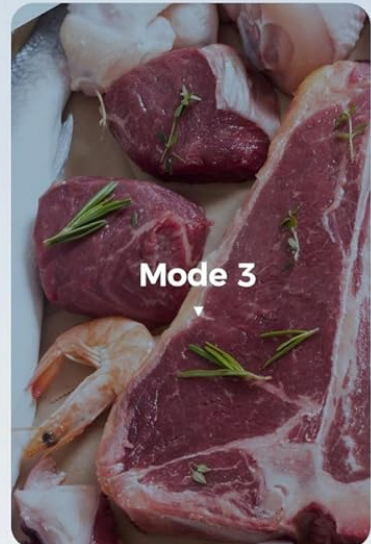
# 3 Stage Temperature Control



Fruits & Beverages



Yogurt & Ice cream



Meats & Seafood

( For Recommended )

MODE	1	2	3
COOLER	50°F (10°C)	45°F (7.4°C)	35°F (1.7°C)
FREEZER	15°F (-9.2°C)	6°F (-14.4°C)	-7.6°F (-22°C)

\* Temperature test results at room temperature of 66°F (18°C), for reference only.

Figure 3: 3-Level Temperature Adjustment Guide

## 3.3 Interior Features

The interior is designed for convenience and organization:

- **LED Lighting:** Illuminates the interior for easy visibility, even at night.
- **Adjustable Shelves:** Multi-layer shelves can be adjusted to accommodate various food types and sizes.
- **Crisper Drawer:** Helps preserve the freshness of fruits and vegetables and prevents odor transfer.



Figure 4: Included Components (Ice Tray, Fruit & Vegetable Box, Glass Partitions) and Dimensions

### 3.4 Design and Accessibility

- **Reversible Door:** The door can be configured to open from either the left or right, offering flexibility in placement.
- **Adjustable Feet:** Ensures the refrigerator can be placed horizontally and stably on uneven surfaces, also preventing moisture damage to the floor.
- **Low Noise Operation:** Designed to operate quietly, ensuring a peaceful environment.



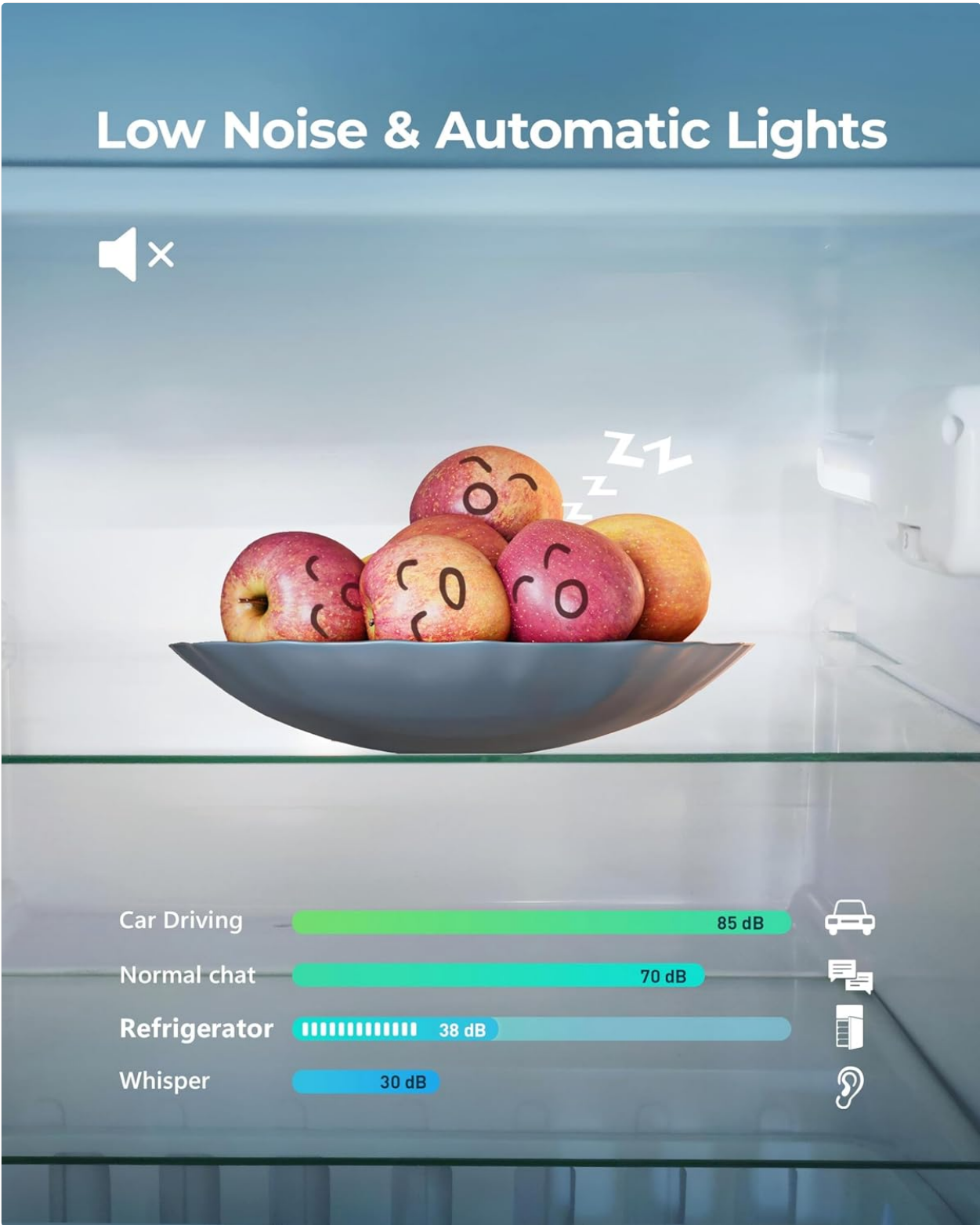


Figure 5: Low Noise and Automatic Lights Feature

### 3.5 Energy Efficiency

The EUHOMY mini fridge is UL energy certified, consuming approximately 0.98 kWh per day, contributing to energy savings.



Figure 6: Daily Energy Consumption

## 4. SETUP

Before initial use, it is recommended to place the mini fridge upright for at least 24 hours. This allows the refrigerant to settle properly, ensuring optimal performance.

1. Unpack the refrigerator and remove all packaging materials.
2. Choose a suitable location with adequate ventilation and away from direct sunlight or heat sources.
3. Ensure the refrigerator is level by adjusting the feet.
4. Allow the unit to stand upright for at least 24 hours before plugging it in.



5. Plug the refrigerator into a dedicated grounded electrical outlet.

## 5. OPERATING INSTRUCTIONS

### 5.1 Temperature Adjustment

The refrigerator features a temperature control dial located inside the unit. Adjust the dial to select your desired cooling level (refer to Figure 3 for guidance on settings for different food types).

### 5.2 Using the Compartments

- **Freezer:** Use the top compartment for freezing items like ice, ice cream, and other frozen foods.
- **Refrigerator:** The lower compartment is for general refrigeration. Utilize the adjustable glass shelves to customize storage space. The crisper drawer is best for fresh produce.

## 6. MAINTENANCE

### 6.1 Cleaning

Regular cleaning helps maintain the efficiency and appearance of your refrigerator. The stainless steel door material is designed for easy cleaning.

- Unplug the appliance before cleaning.
- Clean the interior and exterior surfaces with a soft cloth and mild detergent.
- Wipe dry thoroughly.
- The shelves and crisper drawer can be removed for easier cleaning.

### 6.2 Defrosting

This model features manual defrost. When frost accumulates to a thickness of about 1/4 inch (6mm), defrost the unit.

1. Unplug the refrigerator.
2. Remove all food items and place them in another cooler.
3. Leave the doors open to allow frost to melt naturally. You can place towels at the bottom to absorb water.
4. Once defrosted, clean and dry the interior before plugging it back in and returning food.

## 7. TROUBLESHOOTING

If you encounter issues with your refrigerator, please refer to the following common problems and solutions:

Problem	Possible Cause	Solution
Refrigerator does not operate	Not plugged in; Circuit breaker tripped; Temperature control set to OFF.	Ensure plug is secure; Reset circuit breaker; Adjust temperature control.
Temperature is too warm	Door opened too frequently; Large amount of warm food added; Poor ventilation; Temperature control set too low.	Minimize door openings; Allow food to cool before placing inside; Ensure proper clearance around unit; Adjust temperature control to a colder setting.

Problem	Possible Cause	Solution
Excessive frost buildup	Door not sealed properly; High humidity; Frequent door openings.	Check door gasket for proper seal; Reduce humidity if possible; Minimize door openings; Defrost manually.
Unusual noises	Unit not level; Objects vibrating against the unit; Compressor noise (normal).	Adjust leveling feet; Ensure nothing is touching the unit; Normal operation may produce some sound.

If the problem persists after attempting these solutions, please contact customer support.

## 8. SPECIFICATIONS

Feature	Specification
Brand Name	EUHOMY
Model Info	CRF006-31
Item Weight	45 pounds
Product Dimensions	19.4 x 18.1 x 33.5 inches (D x W x H)
Capacity	3.2 Cubic Feet
Annual Energy Consumption	356 Kilowatt Hours Per Year
Refrigerator Fresh Food Capacity	2.24 Cubic Feet
Freezer Capacity	0.96 Cubic Feet
Installation Type	Freestanding
Form Factor	Stand Alone
Special Features	Adjustable Shelves
Color	Silver
Voltage	115V
Racks	2
Crispers/Drawers	1
Defrost System	Manual
Door Hinges	Reversible
Door Material Type	Stainless Steel
Shelf Type	Glass
Shelves	2
Certification	UL

Feature	Specification
Number Of Doors	2

## 9. WHAT'S IN THE BOX

Your EUHOMY Mini Fridge package includes:


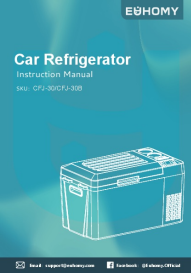

- 1 x Refrigerator Unit
- 1 x Crisper Drawer
- 2 x Adjustable Glass Shelves




## 10. WARRANTY AND SUPPORT

EUHOMY provides a 12-month product support for this mini fridge. If you experience any issues or require assistance, please contact our customer support team. Your satisfaction is our priority.

© 2023 EUHOMY. All rights reserved.

### Related Documents - CRF006-31

	<p><a href="#">Euhomy Car Refrigerator Instruction Manual</a></p> <p>Instruction manual for the Euhomy Car Refrigerator, model CFJ-30. Covers product functions, operation, troubleshooting, technical parameters, and safety notices.</p>
	<p><a href="#">Euhomy Car Refrigerator Instruction Manual (CFJ-30/CFJ-30B)</a></p> <p>Comprehensive instruction manual for the Euhomy CFJ-30 and CFJ-30B car refrigerators, covering operation, troubleshooting, technical specifications, and safety guidelines.</p>
	<p><a href="#">Euhomy Compact Refrigerator Instruction Manual</a></p> <p>Comprehensive instruction manual for Euhomy compact refrigerators (SKU: RF-H/RF-S), covering safety precautions, installation, operation, maintenance, troubleshooting, and warranty information.</p>

	<p><a href="#">Euhomy Car Refrigerator Instruction Manual - CFL-16/CFL-23</a></p> <p>Comprehensive instruction manual for the Euhomy CFL-16 and CFL-23 portable car refrigerators. Includes setup, operation, safety, troubleshooting, and app connection guides.</p>
<p><b>Car Refrigerator</b> Instruction Manual SKU: CFQ-18/CFQ-25</p> 	<p><a href="#">Euhomy Car Refrigerator Instruction Manual (CFQ-18/CFQ-25)</a></p> <p>Comprehensive instruction manual for the Euhomy Car Refrigerator models CFQ-18 and CFQ-25, covering operation, maintenance, troubleshooting, and warranty information.</p>
	<p><a href="#">Euhomy 3.2 cu FT Refrigerator Instruction Manual</a></p> <p>Comprehensive instruction manual for the Euhomy 3.2 cu FT Refrigerator (Model: RF-S). Covers safety precautions, parts and features, installation, operation, defrosting, food storage, cleaning, troubleshooting, and warranty information.</p>