

[Manuals.plus](#) /

> [LoraTap](#) /

> LoraTap WiFi Smart Blind Switch User Manual

LoraTap AK3-AT1-GL-M-X

LoraTap WiFi Smart Blind Switch User Manual

Model: AK3-AT1-GL-M-X

INTRODUCTION

Welcome to the user manual for your LoraTap WiFi Smart Blind Switch. This device allows you to control your roller shutters or blinds conveniently via a touch panel, an RF remote control, or through a smartphone app. It also supports voice control with popular smart home assistants, enhancing your home automation experience.

Key Features

- Integrated RF Remote Control for flexible operation.
- Smart Life App compatibility for remote control and scheduling.
- Timer function for automated opening and closing.
- Voice control support with Google Home and Amazon Alexa.

SAFETY INFORMATION

Important: Always disconnect power before installation or maintenance to prevent electric shock.

Professional Installation Recommended: If you are unsure about electrical wiring, consult a qualified electrician.

Compatibility: This switch is designed for motors with four wires (Live, Neutral, Up, Down). Ensure your motor is compatible before installation.

Power Rating: Do not exceed the maximum load capacity of 600W to avoid damage to the device or motor.

PACKAGE CONTENTS

Please verify that all items are present in your package:

- LoraTap WiFi Smart Blind Switch
- RF Remote Control
- Mounting Screws
- Small Screwdriver
- Additional Terminal for Neutral Conductor (if applicable)

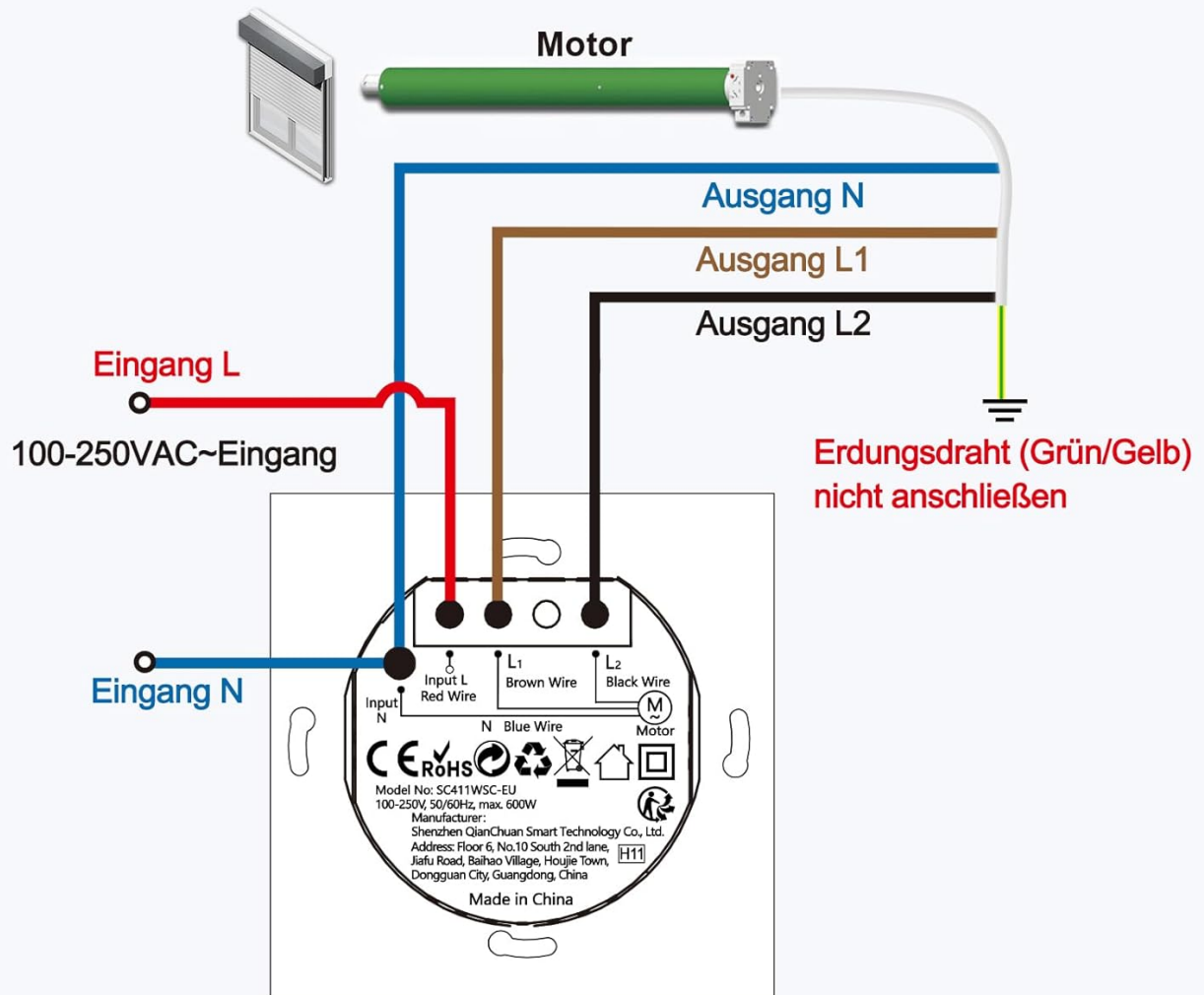
SETUP & INSTALLATION

Wiring Diagram

Ensure power is disconnected before proceeding. This switch requires a neutral wire. Confirm your motor has four wires (Blue=Neutral, Black=Up/Down, Brown=Down/Up, Green/Yellow=Ground).

Schaltplan

Bitte bestätigen Sie, dass Ihr Motor vier Drähte hat, da unser Rollladenschalter nur mit Motoren kompatibel ist, die vier Drähte haben.



Input L: Live wire (100-250VAC)

Input N: Neutral wire

Output N: Neutral output to motor

Output L1: Up/Down control wire to motor

Output L2: Down/Up control wire to motor

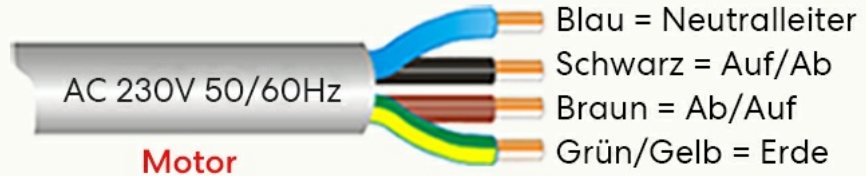
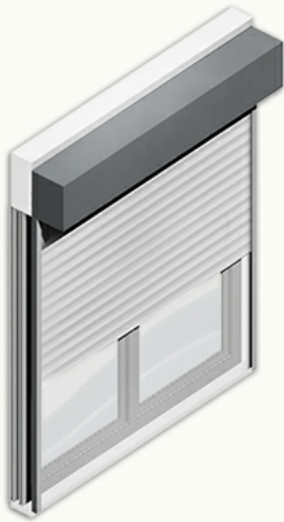
Ground Wire (Green/Yellow): Do not connect to the switch.

Motor Compatibility

This switch is compatible only with 4-wire motors. Please verify your motor's wiring configuration before installation.

Bitte beachten Sie die Kompatibilität

Ein Neutraleiter ist erforderlich. Bitte stellen Sie sicher, dass Ihr Motor vier Drähte hat (Blauer Draht, Brauner Draht, Schwarzer Draht, Grün/Gelber Draht). Unsere Produkte sind nur mit vieradrigen Motoren kompatibel.



Lastleistung: ≤600W

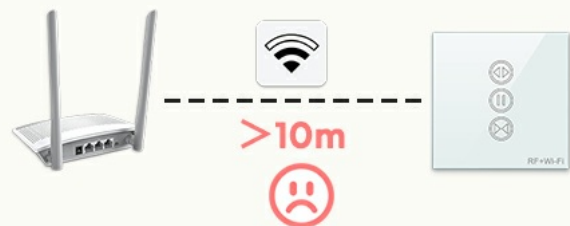
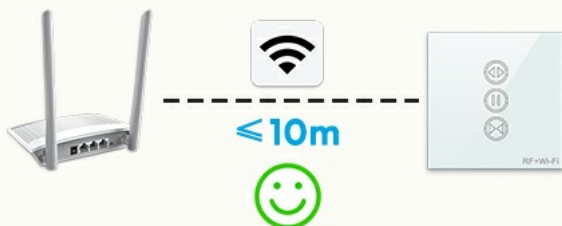
Blue: Neutral Conductor
Black: Up/Down
Brown: Down/Up
Green/Yellow: Earth
Max Load: ≤600W

WLAN Signal Confirmation

For optimal performance, the device should be installed within 10 meters of your WLAN router to ensure a strong and stable signal.

WLAN-Bestätigung

Der Installationsort des Geräts sollte innerhalb von 10 Metern des WLAN-Routers liegen, um ein gutes WLAN-Signal zu gewährleisten.



OPERATING INSTRUCTIONS

Control Methods

Your LoraTap Smart Blind Switch offers multiple ways to control your blinds:

Touch Panel Control

The switch features a touch-sensitive glass panel for direct control.

Sie können den Rollladen mit einem Touchpanel-Schalter oder einer Funkfernbedienung steuern



Touchpanel-Steuerung



Funkfernbedienung



- Touch the **Up** arrow to open the blinds.
- Touch the **Down** arrow to close the blinds.
- Touch the **Pause** button to stop the blinds at any position.

RF Remote Control

The included RF remote control allows for convenient operation from anywhere within your home.

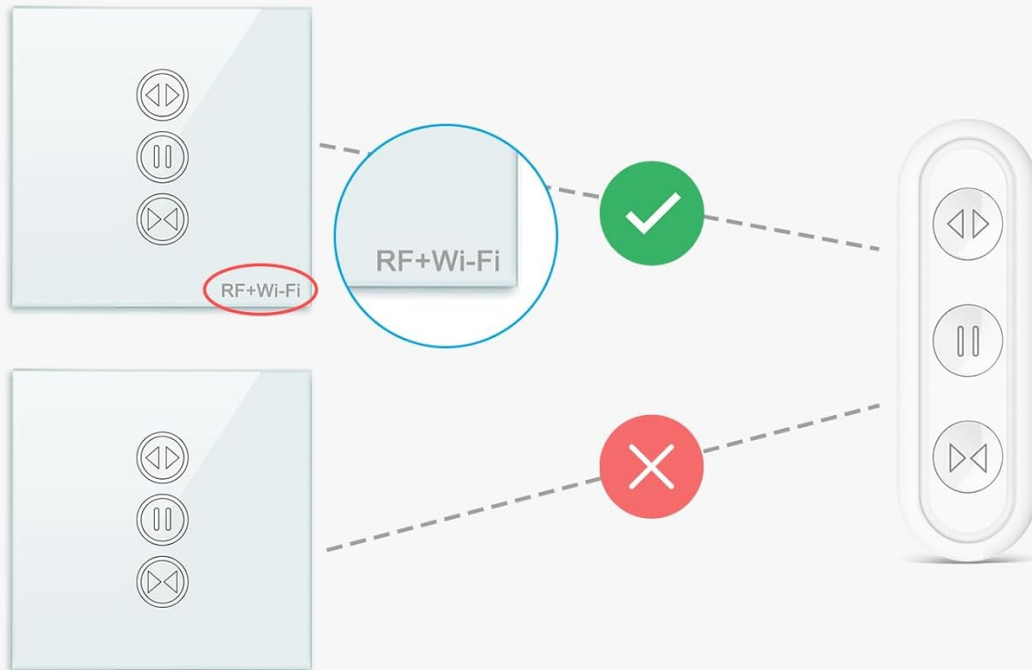
Einfach zu tragen

Bedienen Sie es jederzeit von überall in Ihrem Zuhause aus.



The remote control is pre-paired with the switch. Ensure your switch is marked with "RF+Wi-Fi" for compatibility.

Die Fernbedienung ist nur mit Rollladenschaltern kompatibel, die mit dem Symbol „RF+WiFi“ gekennzeichnet sind.



Smart Life App Control

Download the free Smart Life App (or Tuya App) on your smartphone or tablet to control your blinds remotely from anywhere.

Fernbedienung von Anwendungen

Bei Regen können Sie die Rollläden zu Hause über die mobile App aus der Ferne schließen.



- Open the app and select your device.
- Use the virtual buttons to open, close, or pause your blinds.
- Receive real-time status updates.

Timer Function

Set schedules within the Smart Life App to automatically open or close your blinds at specific times.

Timer-Funktion

Öffnen/schließen Sie den Rollladen automatisch zu einem geplanten Zeitpunkt



- In the Smart Life App, navigate to the device settings.
- Select "Schedule" or "Timer" to create new automation rules.
- Set desired times for opening and closing.

Voice Control

Integrate your LoraTap Smart Blind Switch with Google Home or Amazon Alexa for convenient voice commands.

Sprachsteuerung

"Alexa, open the roller shutter."

"OK!"



Compatible with
amazon alexa

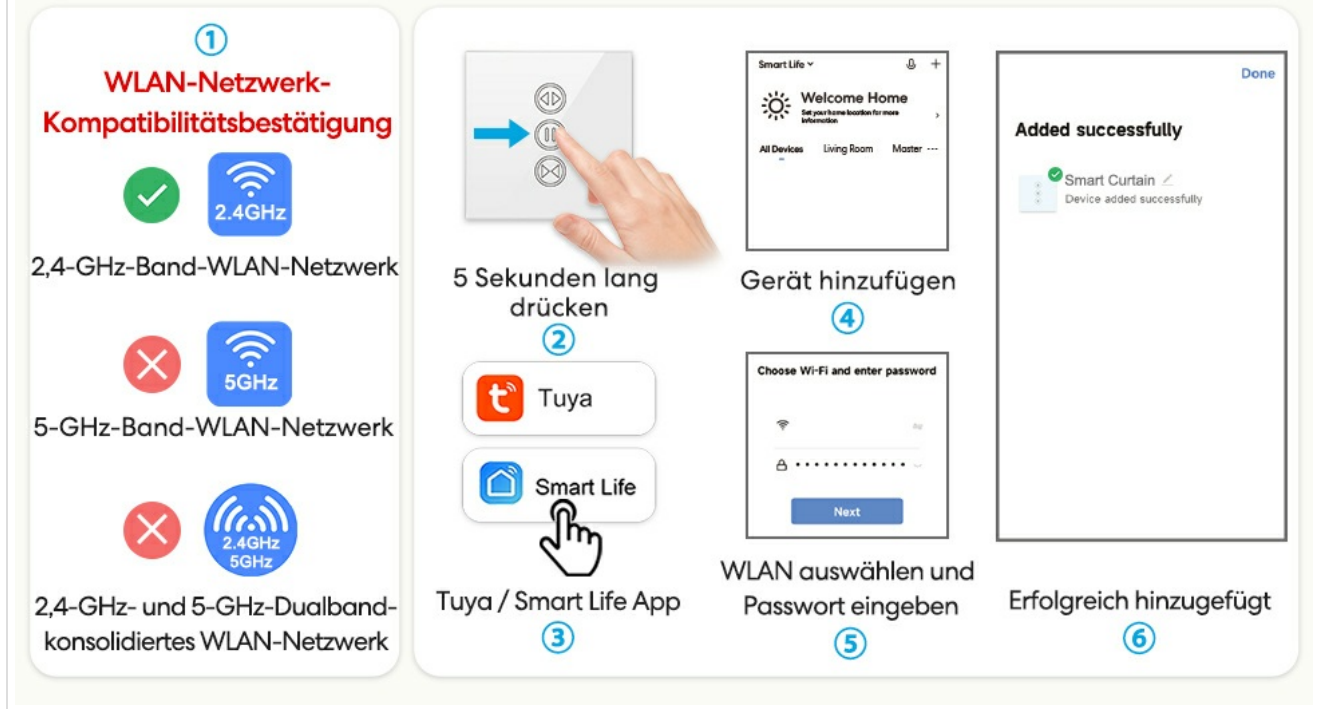
Google Assistant

- Ensure your Smart Life account is linked to your Google Home or Amazon Alexa app.
- Use commands like "Alexa, open the roller shutter" or "Hey Google, close the blinds."

PAIRING INSTRUCTIONS (SMART LIFE APP)

Follow these steps to pair your switch with the Smart Life or Tuya App:

Einfache Kopplung



- 1. WLAN Network Compatibility:** Ensure your Wi-Fi network is 2.4GHz. 5GHz networks or combined 2.4GHz/5GHz networks are not supported for initial pairing.
- 2. Enter Pairing Mode:** Press and hold the **Pause** button on the switch for 5 seconds until the indicator light flashes rapidly.
- 3. Open App:** Open the Smart Life or Tuya App on your smartphone.
- 4. Add Device:** Tap the "+" icon or "Add Device" to begin the pairing process.
- 5. Select Device Type:** Choose "Curtain Switch" or similar from the device list.
- 6. Connect to WLAN:** Select your 2.4GHz Wi-Fi network and enter the password.
- 7. Confirm Pairing:** The app will search for and connect to the device. Once successful, the device will be added to your app.

MAINTENANCE

To ensure the longevity and proper functioning of your LoraTap Smart Blind Switch, follow these simple maintenance guidelines:

- **Cleaning:** Wipe the glass panel with a soft, dry cloth. Avoid using abrasive cleaners or solvents that could damage the surface.
- **Power Cycle:** If the switch becomes unresponsive, try turning off the power at the circuit breaker for a few minutes, then restore power.
- **Firmware Updates:** Periodically check the Smart Life App for any available firmware updates for your device to ensure optimal performance and security.

TROUBLESHOOTING

| Problem | Possible Cause | Solution |
|---------------------------------|---|--|
| Switch not responding to touch. | No power; Incorrect wiring; Device malfunction. | Check power supply. Verify wiring according to the diagram. Contact support if issue persists. |
| Remote control not working. | Battery low/dead; Not paired; Out of range. | Replace CR2032 battery. Re-pair the remote if necessary (refer to remote's specific pairing instructions, usually holding a button on the remote and switch). Ensure remote is within range of the switch. |
| Cannot connect to Wi-Fi. | Incorrect Wi-Fi password; 5GHz network; Router too far; Device not in pairing mode. | Double-check Wi-Fi password. Ensure you are connecting to a 2.4GHz network. Move router closer or use a Wi-Fi extender. Put the switch into pairing mode (hold pause button for 5 seconds). |
| Blinds not moving correctly. | Motor wiring incorrect; Motor malfunction; Calibration needed. | Verify L1/L2 wiring to the motor. Consult motor manual for troubleshooting. Some smart switches require calibration for full open/close positions in the app. |
| Voice control not working. | App not linked; Incorrect commands; Internet connection issue. | Ensure Smart Life/Tuya account is correctly linked to Google Home/Alexa. Use precise commands. Check internet connection for both the switch and your smart speaker. |

SPECIFICATIONS

| Feature | Detail |
|--------------------|----------------------|
| Model Number | AK3-AT1-GL-M-X |
| Brand | LoraTap |
| Color | White |
| Material | Plastic |
| Item Weight | 230 g |
| Product Dimensions | 11.7 x 10.4 x 4.9 cm |
| Operating Voltage | 100-250VAC |
| Current Rating | 10 Amps |

| Feature | Detail |
|--------------------|-------------------------------------|
| Max Load Power | 600W |
| Switch Type | 1-Way |
| Connectivity | Wi-Fi (2.4GHz), RF |
| Batteries Required | Yes (1 CR2032 for remote, included) |
| Compatible Apps | Smart Life, Tuya |
| Voice Assistants | Google Home, Amazon Alexa |

WARRANTY AND SUPPORT

For warranty information and technical support, please refer to the official LoraTap website or contact their customer service directly. Keep your purchase receipt as proof of purchase.