

Steinel 58678

Steinel LED-spot Way N with Twilight Sensor Instruction Manual

Model: 58678

INTRODUCTION

This manual provides essential information for the safe and efficient installation, operation, and maintenance of your Steinel LED-spot Way N with Twilight Sensor. Please read these instructions carefully before use and retain them for future reference.

The Steinel LED-spot Way N is an IP44-rated outdoor path light designed to provide reliable illumination for driveways, access paths, and garden areas. It features an integrated twilight sensor for automatic operation and an adjustable spotlight head for precise light direction.

SAFETY INSTRUCTIONS

- **Electrical Safety:** Installation must be performed by a qualified electrician in accordance with national wiring regulations. Ensure the power supply is disconnected before installation or maintenance.
- **Voltage:** This product operates on 220 - 240 V / 50 - 60 Hz AC mains power.
- **Protection Class:** The device has an IP44 protection rating, making it suitable for outdoor use and protected against splashing water.
- **Lamp Type:** Only use GU10 LED lamps as specified. Do not exceed the maximum wattage of 9W for replacement GU10 LED lamps.
- **Mounting:** Ensure the mounting surface is stable and capable of supporting the weight of the fixture.
- **Children:** Keep packaging materials and small parts away from children.

SETUP AND INSTALLATION

1. Unpacking

Carefully remove all components from the packaging. Verify that all parts listed in the 'Included Components' section are present and undamaged.



Image: The Steinel LED-spot Way N, its GU10 LED lamp, 2.5m power cable with plug, mounting hardware (screws, plugs), and quick start guide, as received in its packaging.

2. Mounting the Spotlight

The LED-spot Way N is designed for easy floor mounting. Choose a suitable location on a stable surface, such as a patio, pathway, or garden area.

1. Position the base of the spotlight at the desired location.
2. Mark the drilling points through the holes in the base.
3. Drill holes at the marked positions. Insert the provided wall plugs if mounting into masonry or concrete.
4. Secure the spotlight base to the surface using the supplied screws.

3. Connecting Power

The spotlight comes with a pre-installed 2.5-meter power cable and plug for convenient connection to a standard outdoor power outlet.



Image: The included 2.5-meter power cable with a standard European plug, ready for connection to an outdoor power source.

1. Ensure the power outlet is suitable for outdoor use and has appropriate weather protection.
2. Plug the power cable into the outdoor outlet.
3. Ensure the cable is routed safely to prevent tripping hazards and damage.

4. Lamp Installation/Replacement

The spotlight includes a replaceable GU10 LED lamp. To install or replace the lamp:

1. Ensure the power supply is disconnected.
2. Carefully twist and remove the front cover of the spotlight.
3. Insert the GU10 LED lamp into the socket, aligning the pins, and twist to secure it.
4. Replace the front cover, ensuring it is securely fastened to maintain the IP44 rating.

OPERATING INSTRUCTIONS

1. Automatic Twilight Sensor (NightAutomatic)

The Steinel LED-spot Way N features a NightAutomatic function, which means the light will automatically turn on when ambient light levels fall below a set threshold and turn off when it becomes bright enough. This ensures continuous illumination after sunset.



Image: Multiple Steinel LED-spot Way N lights providing consistent illumination along an outdoor pathway during twilight hours.

2. Adjusting the Twilight Sensor

The twilight sensor sensitivity can be adjusted directly on the spotlight to suit your specific needs (2-1000 lux).

1. Locate the adjustment dial or switch for the twilight sensor on the fixture.
2. Turn the dial to increase or decrease the lux threshold. A lower lux setting means the light will turn on earlier in dimmer conditions, while a higher setting means it will turn on later when it's darker.
3. Test the setting by observing the light's behavior at dusk and dawn.

3. Adjusting the Spotlight Head

The spotlight head offers flexibility in directing the light beam.

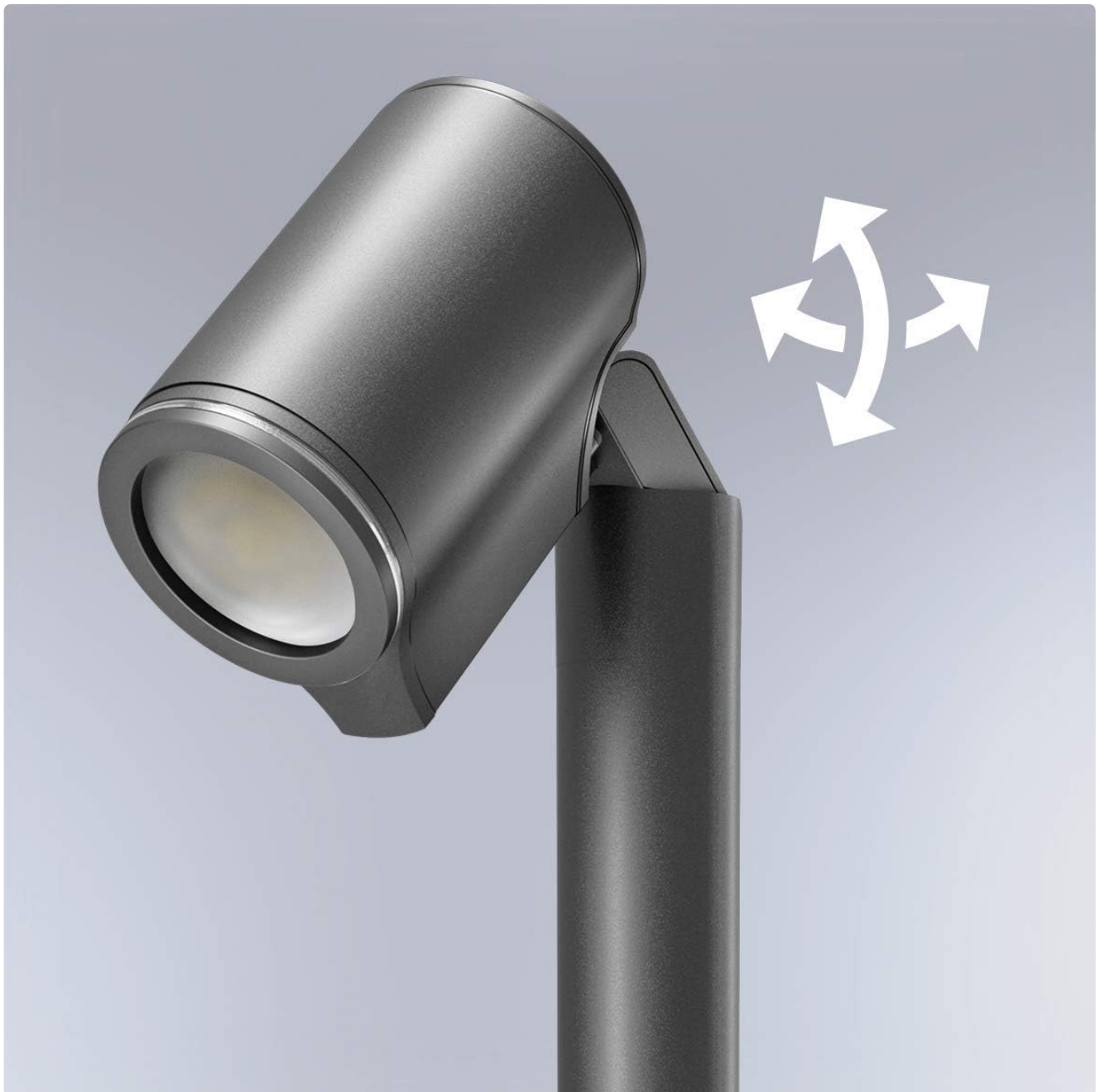


Image: Close-up of the Steinel LED-spot Way N's adjustable head, showing its capability to rotate horizontally and vertically for precise light positioning.

- The spotlight head can be rotated **180° horizontally**.
- It can also be tilted **90° vertically**.
- Gently adjust the head to illuminate your desired area, such as a path, plant, or architectural feature.

MAINTENANCE

1. Cleaning

To maintain the appearance and performance of your spotlight:

- Ensure the power supply is disconnected before cleaning.
- Wipe the fixture with a soft, damp cloth.
- Do not use abrasive cleaners, solvents, or high-pressure washers, as these can damage the finish or internal components.

- Regularly clean the twilight sensor lens to ensure accurate light detection.



Image: An icon depicting a rain cloud, symbolizing the IP44 weather resistance of the product, which protects it from splashing water.

2. Lamp Replacement

Refer to the 'Lamp Installation/Replacement' section under Setup for detailed instructions on how to replace the GU10 LED lamp.

TROUBLESHOOTING

Problem	Possible Cause	Solution
Light does not turn on.	No power supply.	Check the power outlet and circuit breaker. Ensure the plug is fully inserted.
	Faulty GU10 LED lamp.	Replace the GU10 LED lamp.
	Twilight sensor setting is too high (light thinks it's still bright).	Adjust the twilight sensor sensitivity to a lower lux value.
Light stays on during the day.	Twilight sensor setting is too low (light thinks it's still dark).	Adjust the twilight sensor sensitivity to a higher lux value.
	Sensor lens is dirty or obstructed.	Clean the sensor lens and remove any obstructions.

TECHNICAL SPECIFICATIONS

Feature	Specification
Model Number	58678
Dimensions (L x W x H)	226 x 140 x 572 mm
Weight	1.23 kg
Mains Connection	220 - 240 V / 50 - 60 Hz
Power Consumption	7.86 W
Luminous Flux	512 lumens (fixture), 620 lumens (included GU10 lamp)
Color Temperature	3000 K (Warm White)
Protection Class	IP44
Material	Aluminum

Feature	Specification
Finish	Powder-coated (Anthracite)
Twilight Sensor Range	2 - 1000 lux
Spotlight Head Adjustment	180° horizontal, 90° vertical
Included Lamp Type	GU10 LED (replaceable, max 9W)
Energy Efficiency Class	F

WARRANTY INFORMATION

Steinel products are manufactured to high-quality standards. For specific warranty terms and conditions, please refer to the warranty card included with your product or visit the official Steinel website. Keep your proof of purchase for any warranty claims.

CUSTOMER SUPPORT

If you encounter any issues or have questions regarding your Steinel LED-spot Way N that are not covered in this manual, please contact Steinel customer support. You can find contact details on the official Steinel website or through your retailer.

Online Resources: For additional information, product registration, or FAQs, please visit the [Steinel official website](#).

