

PawHut D06-072

PawHut Pet Playpen D06-072 Instruction Manual

Model: D06-072

1. INTRODUCTION

This manual provides detailed instructions for the assembly, operation, and maintenance of your PawHut DIY Pet Playpen (Model D06-072). This versatile enclosure is designed to provide a safe and customizable space for small animals such as guinea pigs, rabbits, chinchillas, ferrets, hedgehogs, and kitties. Please read all instructions carefully before assembly and use to ensure proper setup and safety for your pet.

2. SAFETY INFORMATION

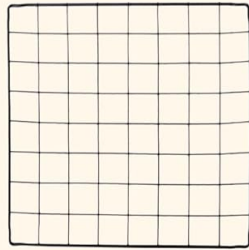
- **Not Suitable for All Animals:** This playpen is **not suitable for hamsters and rats** due to the grid size. Ensure your pet cannot escape through the panel openings.
- **Secure Connections:** Always ensure all connectors are firmly attached to the wire panels. Use the included cable ties for additional stability, especially in multi-level configurations or if your pet is active.
- **Stable Placement:** Place the assembled playpen on a flat, stable surface to prevent wobbling or collapse.
- **Regular Inspection:** Periodically check all connections and panels for any signs of wear, damage, or loosening. Tighten or replace components as necessary.
- **Supervision:** Always supervise your pet, especially during initial use, to ensure they are safe and comfortable within the enclosure.
- **Ventilation:** Ensure adequate ventilation within the playpen.
- **Child Safety:** Keep small parts and packaging materials away from children.

3. PACKAGE CONTENTS

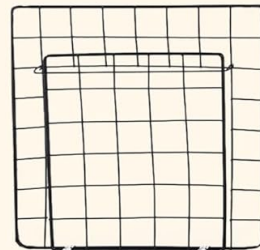
Verify that all components are present before beginning assembly:

- 35 x Wire Panels (approx. 13.75" x 13.75" / 35 x 35 cm each)
- 1 x Door Panel
- 1 x PVC Hammer
- Several Cable Ties
- 72 x Plastic Connectors

WHAT'S IN THE BOX?



35 x Wire Panels
13.75" x 13.75" / 35 x 35 cm



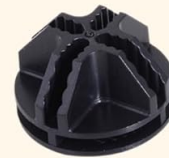
1 x Door Panel



1 x PVC Hammer



Several Cable Ties



72 x Plastic Connector

Figure 1: Included components of the PawHut Pet Playpen.

4. SETUP AND ASSEMBLY INSTRUCTIONS

The PawHut Pet Playpen features a DIY design, allowing for various configurations. Follow these general steps for assembly:

1. **Plan Your Design:** Before connecting panels, decide on the desired shape and size of your playpen. Consider the space available and your pet's needs.
2. **Connect Panels:** Insert the corners of the wire panels into the slots of the plastic connectors. Ensure the panels are fully seated within the connectors.
3. **Secure Connections:** Use the included PVC hammer to gently tap the panels into the connectors, ensuring a snug and secure fit. This helps to prevent wobbling.
4. **Install Door Panel:** Integrate the door panel into your design. The door allows for easy access to your pet for feeding, watering, and interaction.
5. **Add Stability with Cable Ties:** For enhanced stability, especially for larger or more active pets, use the provided cable ties to reinforce connections between panels. Wrap the cable ties around adjacent wires near the connectors and tighten securely.
6. **Create Multi-Level Structures (Optional):** If building a multi-level cage, ensure the base is strong and

stable. Use additional panels to create platforms and ramps. PP resin layers (not included, but can be added by user) on platforms and ramps can make walking more comfortable for your pet.

7. **Final Check:** Once assembled, gently push and pull on the structure to ensure all connections are secure and the playpen is stable.

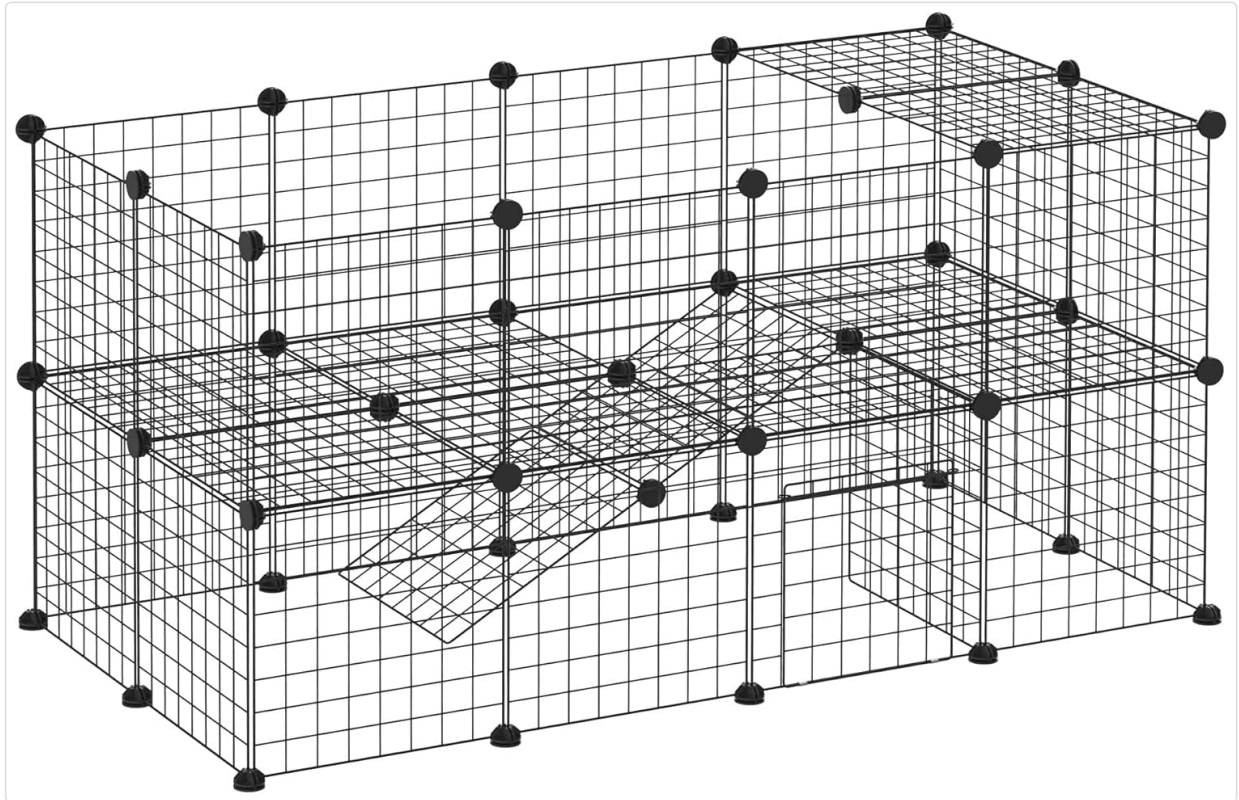


Figure 2: Example of a multi-level playpen configuration.



Figure 3: Examples of DIY configurations possible with the playpen panels.



Figure 4: Detail of a secure panel connection using a plastic connector and cable tie.

5. OPERATING INSTRUCTIONS

Using your PawHut Pet Playpen is straightforward:

- **Door Access:** The integrated door panel allows for easy entry and exit. Simply unlatch and open the door to access your pet or place items inside the enclosure.
- **Reconfiguration:** The modular design allows you to easily reconfigure the playpen as needed. To change the shape or size, gently disconnect panels from the connectors and reassemble them in the desired arrangement. Always re-secure connections with the hammer and cable ties.
- **Placement:** Position the playpen in a safe, indoor area away from direct sunlight, drafts, or hazards. Ensure sufficient space around the enclosure for cleaning and pet interaction.

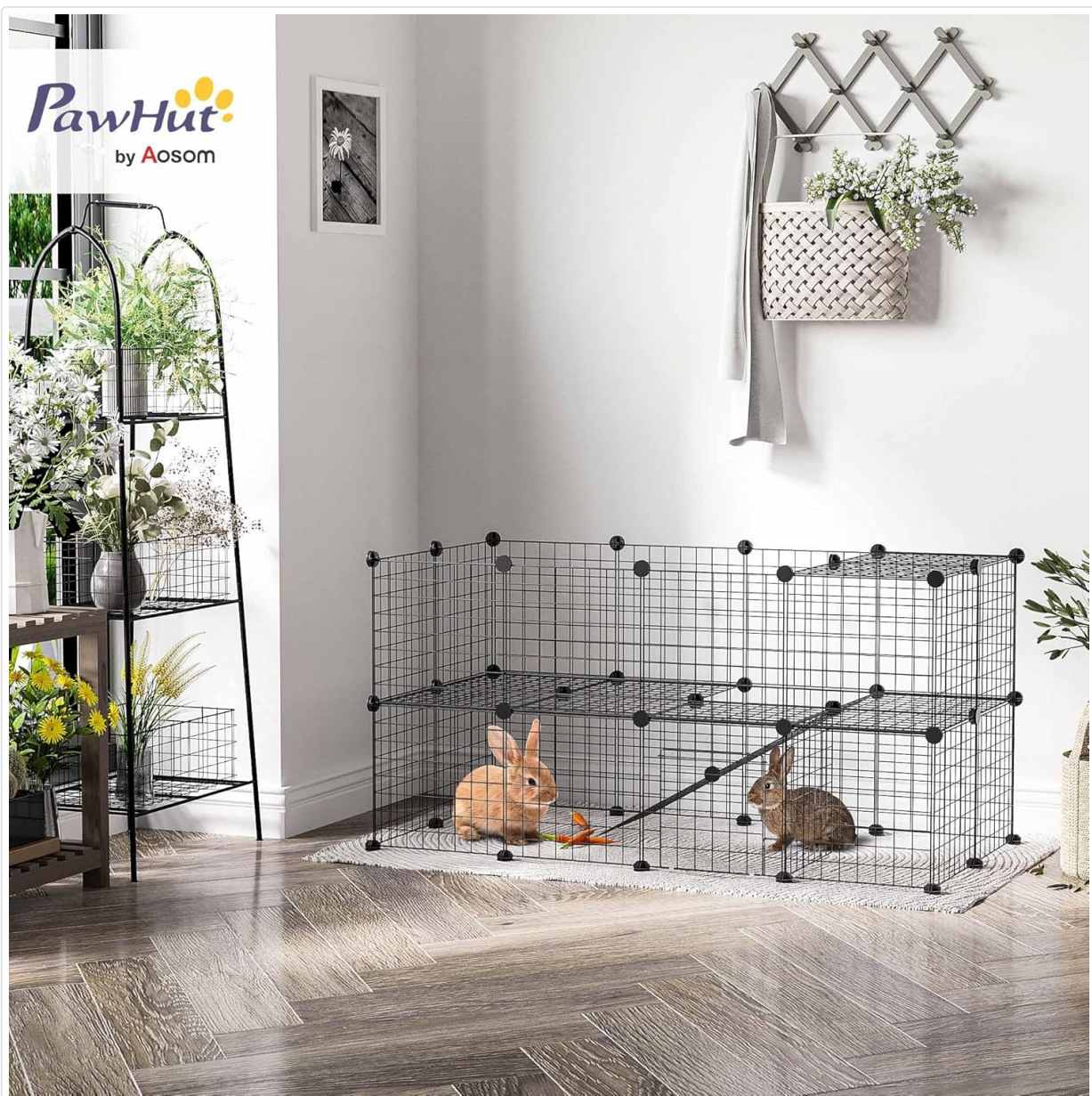


Figure 5: PawHut Pet Playpen in use with small animals.

6. MAINTENANCE

Regular maintenance will extend the life of your pet playpen:

- **Cleaning:** Wipe down wire panels and plastic connectors with a damp cloth and mild, pet-safe cleaner. Rinse thoroughly and dry completely before reassembling or allowing pets back inside. Avoid abrasive cleaners.
- **Inspection:** Routinely inspect all components for any signs of damage, rust, or loose connections. Replace any damaged panels or connectors immediately.
- **Storage:** If disassembling for storage, clean all parts and store them in a dry place away from extreme temperatures.

7. TROUBLESHOOTING

- **Playpen is Wobbly:**
Solution: Ensure all wire panels are fully inserted into the plastic connectors. Use the PVC hammer to gently tap connections for a tighter fit. Reinforce critical connections with cable ties.
- **Panels Not Connecting Properly:**

Solution: Check that the panel corners are correctly aligned with the connector slots. Apply even pressure and use the PVC hammer if needed. Avoid forcing connections, which can damage components.

- **Pet Escaping:**

Solution: Inspect the entire enclosure for any gaps or loose panels. Ensure the door is securely latched. For very small or determined pets, consider adding additional panels or reinforcing the base and top with cable ties.

- **Damaged Components:**

Solution: If a panel or connector is damaged, discontinue use and contact customer support for replacement parts.

8. SPECIFICATIONS

Model Number	D06-072
Overall Dimensions	146 L x 73 W x 73 H cm (57.5" L x 28.7" W x 28.7" H)
Panel Dimensions	35 x 35 cm (13.75" x 13.75")
Number of Panels	36 (35 wire panels + 1 door panel)
Material	Steel wire sheet, ABS plastic
Color	Black
Net Weight	8.76 kg
Suitable Animals	Guinea pigs, rabbits, chinchillas, ferrets, hedgehogs, kitties
Not Suitable For	Hamsters, rats

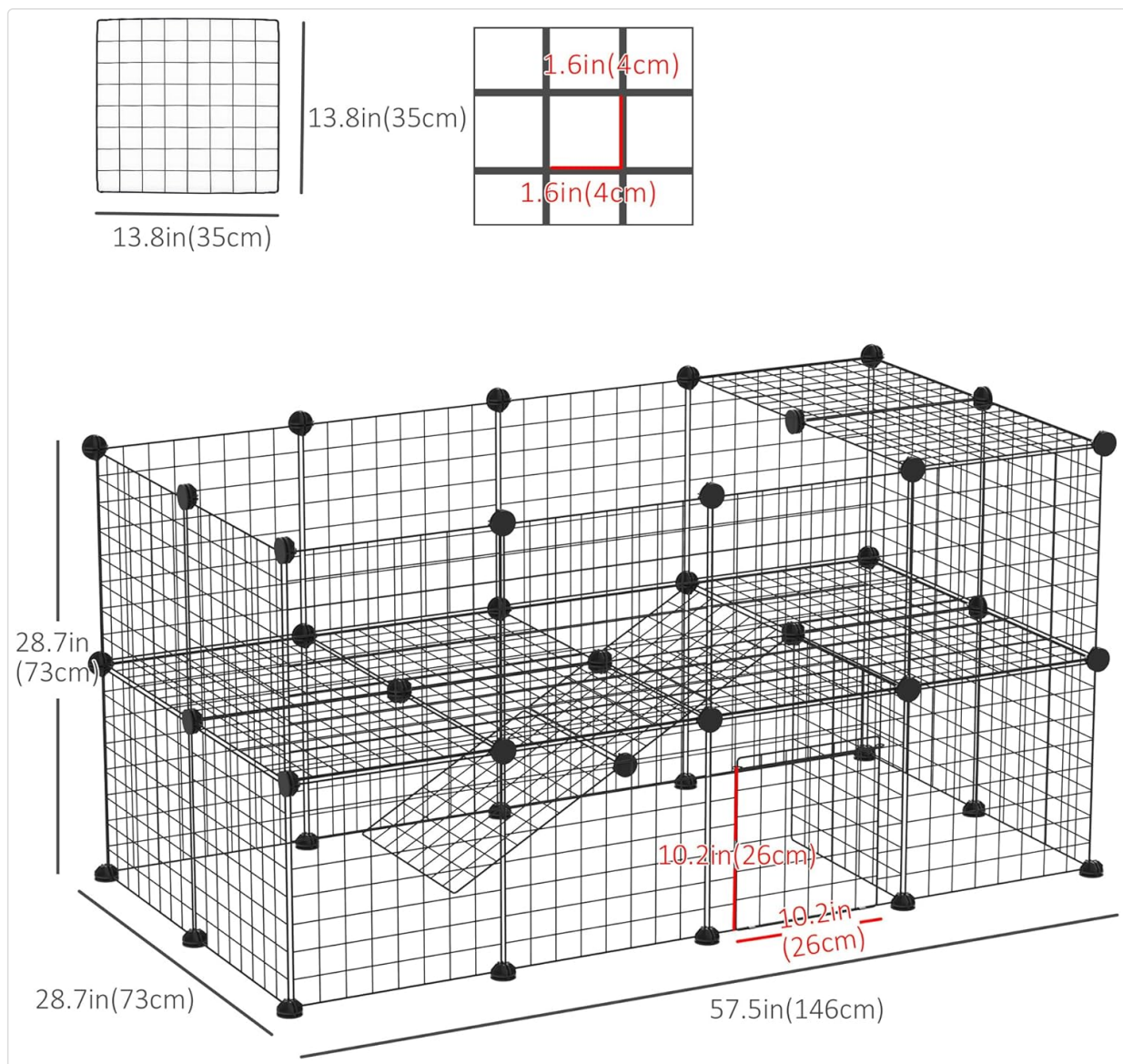


Figure 6: Detailed dimensions of the PawHut Pet Playpen.

9. WARRANTY AND SUPPORT

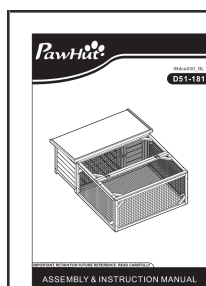
For warranty information, please refer to the documentation provided at the time of purchase or contact your retailer. For product support or to inquire about replacement parts, please contact the manufacturer:

Manufacturer: Aosom Canada

Place of Business: Markham, Ontario, CA



Telephone: 1-416-792-6088

Related Documents - D06-072



[PawHut INdca030_GL D51-181 Rabbit Hutch Assembly & Instruction Manual](#)

Step-by-step assembly instructions for the PawHut INdca030_GL D51-181 rabbit hutch and small animal enclosure. Includes parts list, hardware details, safety warnings, and contact information for Aosom.

	<p>PawHut D51-203V02/D51-203V03 Small Animal Cage Assembly Guide</p> <p>Comprehensive assembly instructions for the PawHut D51-203V02/D51-203V03 small animal cage, detailing parts, hardware, and step-by-step assembly. Includes contact information and product specifications.</p>
	<p>PawHut D51-153 Small Animal Cage Assembly Instructions</p> <p>Comprehensive assembly guide for the PawHut D51-153 small animal cage. This document provides step-by-step instructions, a parts list, and hardware details to help you build your pet's new home.</p>
	<p>PawHut D51-313V00/D51-313V01 Rabbit Hutch Assembly Instructions</p> <p>Comprehensive assembly instructions for the PawHut D51-313V00/D51-313V01 wooden rabbit hutch. Includes parts list, hardware details, step-by-step assembly guide, and contact information for customer support.</p>
	<p>PawHut D51-276 Small Animal Cage Assembly Guide</p> <p>Step-by-step instructions and parts list for assembling the PawHut D51-276 small animal cage. Includes diagrams and hardware details for easy setup.</p>
	<p>PawHut Small Animal Cage Assembly Instructions - Model INdld008_GL, D51-199</p> <p>Comprehensive assembly and instruction manual for the PawHut small animal cage (Model INdld008_GL, D51-199). Includes parts list, hardware details, and step-by-step assembly guide for creating a safe and comfortable habitat for pets. Features multilingual safety warnings and contact information.</p>