

JVC HAA10TA

JVC HAA10TA Truly Wireless Earbuds Instruction Manual

Model: HAA10TA

1. INTRODUCTION

This manual provides essential instructions for the safe and effective use of your JVC HAA10TA Truly Wireless Earbuds. Please read this manual thoroughly before using the product and retain it for future reference.

The JVC HAA10TA earbuds offer a truly wireless audio experience with Bluetooth 5.0 connectivity, IPX5 water resistance, and a comfortable fit. They are designed for ease of use, automatically connecting to your device upon removal from the charging case.

2. PACKAGE CONTENTS

Verify that all items are present in your product package:

- JVC HAA10TA Truly Wireless Earbuds (Left and Right)
- Charging Case
- Memory Foam Earpieces (2 sets)
- Silicone Earpieces (3 sets: Small, Medium, Large)
- USB Charging Cable

MARSHMALLOW



Plus Includes 3 Sets of
Silicone Earpieces (S/M/L)

JVC

Figure 2.1: Earbuds, charging case, and included silicone earpieces.

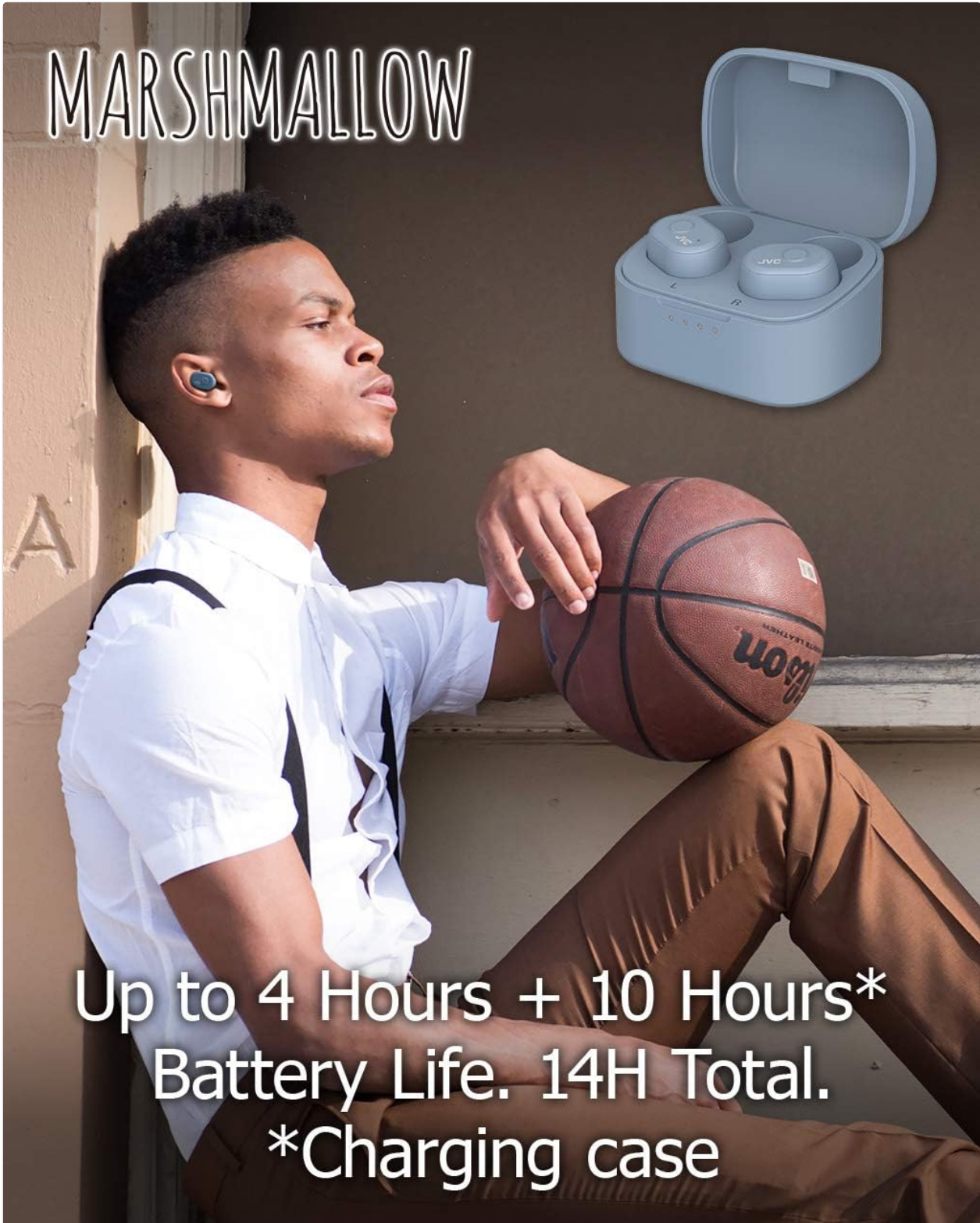
3. SETUP

3.1 Initial Charging

Before first use, fully charge the earbuds and the charging case.

1. Place both earbuds into the charging case. Ensure they are seated correctly.
2. Connect the USB charging cable to the charging case and a compatible USB power source.
3. The indicator lights on the charging case will show the charging status. A full charge typically takes approximately 2 hours.

MARSHMALLOW



Up to 4 Hours + 10 Hours*
Battery Life. 14H Total.
*Charging case

JVC

Figure 3.1: Earbuds and charging case, highlighting the 14-hour total battery life.

3.2 Fitting the Earbuds

Proper fit is crucial for sound quality and comfort. The JVC HAA10TA includes both memory foam and silicone earpieces to ensure a secure fit.

1. Select the earpiece size that best fits your ear canal. Experiment with different sizes for optimal comfort and sound isolation.
2. Gently insert the earbud into your ear and twist slightly to secure it. The memory foam earpieces will conform to your ear shape for a snug fit.

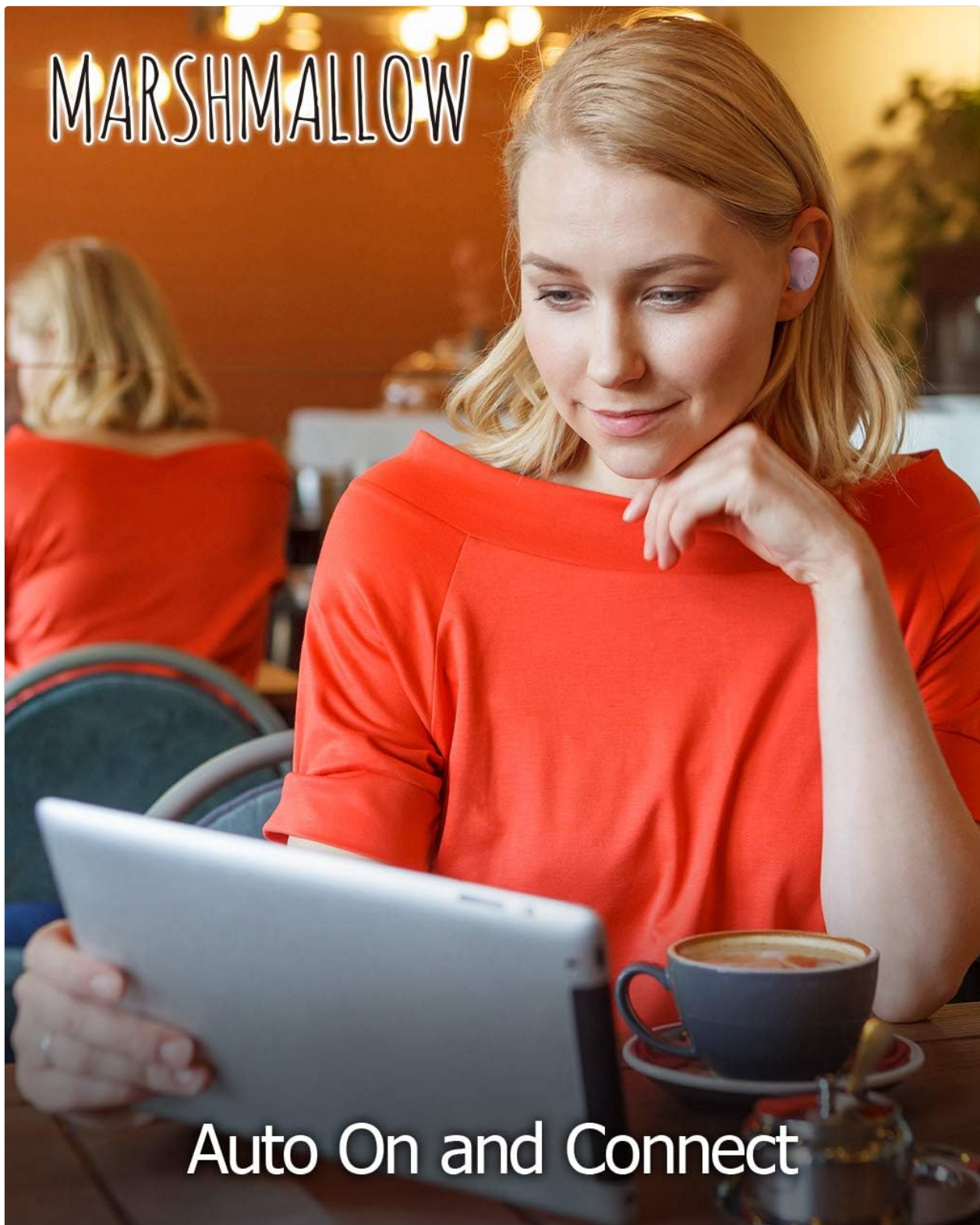


Figure 3.2: Memory foam earpieces designed for secure and comfortable fit.

3.3 Pairing with a Bluetooth Device

The earbuds are designed for simple and automatic connection.

1. Ensure Bluetooth is enabled on your audio device (e.g., smartphone, tablet).
2. Remove both earbuds from the charging case. They will automatically power on and enter pairing mode.
3. On your device, search for available Bluetooth devices and select "JVC HAA10TA" (or similar) from the list.
4. Once connected, a confirmation sound may be heard, and the indicator lights on the earbuds will change.



JVC

Figure 3.3: Earbuds automatically power on and connect when removed from the case.

4. OPERATING INSTRUCTIONS

4.1 Power On/Off

- **Power On:** Remove the earbuds from the charging case. They will automatically power on.

- **Power Off:** Place the earbuds back into the charging case. They will automatically power off and begin charging.

4.2 Music Playback and Call Controls

The earbuds feature physical buttons on each side for basic controls:

- **Play/Pause:** Press the button on either earbud once.
- **Answer/End Call:** Press the button on either earbud once during an incoming call or an active call.
- **Reject Call:** Press and hold the button on either earbud during an incoming call.
- **Next Track:** Double-press the button on the right earbud.
- **Previous Track:** Double-press the button on the left earbud.
- **Volume Control:** Volume must be adjusted directly on your connected audio device.

4.3 Voice Assistant Activation

The earbuds are compatible with voice assistant features on your connected device.

- **Activate Voice Assistant:** Press and hold the button on either earbud for approximately 2 seconds until you hear an audible prompt.

4.4 Water Resistance (IPX5)

The JVC HAA10TA earbuds are rated IPX5 water resistant, meaning they can withstand a sustained, low-pressure water jet spray. This makes them suitable for use during workouts or in light rain. They are not designed for submersion in water.

A close-up photograph of a smiling woman with dark, curly hair. She is wearing a black JVC earbud in her left ear and a large, decorative earring. She is holding a brown paper bag. The background is a bright, outdoor setting with a brick wall and some foliage.

MARSHMALLOW

Voice Assistant Compatible
and IPX5 Water Resistant

JVC

Figure 4.1: Earbuds are voice assistant compatible and IPX5 water resistant.

5. MAINTENANCE

5.1 Cleaning

Regular cleaning helps maintain performance and hygiene.

- Gently wipe the earbuds and charging case with a soft, dry, lint-free cloth.
- Remove earpieces and clean them separately with a mild soap solution if necessary, then rinse and dry thoroughly before reattaching.
- Avoid using harsh chemicals, abrasive materials, or excessive moisture.

5.2 Storage

When not in use, store the earbuds in their charging case to protect them and ensure they remain charged.

- Store in a cool, dry place away from direct sunlight and extreme temperatures.

6. TROUBLESHOOTING

If you encounter issues with your JVC HAA10TA earbuds, refer to the following common solutions:

Problem	Possible Cause	Solution
Earbuds do not power on.	Low battery.	Place earbuds in the charging case and charge fully.
Cannot pair with device.	Bluetooth is off on device; earbuds not in pairing mode; previously paired device interfering.	Ensure Bluetooth is on. Remove earbuds from case to enter pairing mode. Forget/delete earbuds from your device's Bluetooth list and re-pair. Ensure no other devices are connected.
No sound or low volume.	Volume too low on device; improper fit; earbuds not connected.	Increase volume on your device. Adjust earpieces for a secure fit. Re-pair earbuds if connection is lost.
Earbuds disconnect frequently.	Out of range; interference; low battery.	Keep device within Bluetooth range (up to 100 meters). Avoid strong Wi-Fi or other wireless interference. Charge earbuds and case.
Charging case not charging.	Faulty cable or power source.	Try a different USB cable and power adapter. Ensure connections are secure.

7. SPECIFICATIONS

Feature	Detail
Model Name	HAA10TA
Connectivity Technology	Bluetooth
Wireless Communication Technology	Bluetooth 5.0
Water Resistance Level	IPX5 (Water Resistant)
Battery Life	Up to 14 hours (4 hours earbuds + 10 hours with charging case)

Feature	Detail
Charging Time	Approximately 2 hours
Bluetooth Range	Up to 100 meters (330 feet)
Compatible Devices	Android, iOS
Control Type	Voice Control, Button Control
Earpiece Shape	Rounded tip
Material	Memory foam (earpieces)
Item Weight	5.2 Grams (each earbud)
Product Dimensions	7 x 4 x 2 inches (packaging)
UPC	046838081057

8. WARRANTY AND SUPPORT

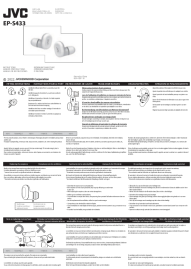
8.1 Warranty Information






JVC products are manufactured to high-quality standards. For specific warranty details, please refer to the warranty card included with your purchase or visit the official JVC website. Keep your proof of purchase for warranty claims.

8.2 Customer Support

If you require further assistance or have questions not covered in this manual, please contact JVC customer support through their official website or the contact information provided in your product packaging.

Related Documents - HAA10TA

	<p>JVC EP-S433 Earplugs: Fitting, Specifications, and Warranty Guide</p> <p>A comprehensive guide for JVC EP-S433 earplugs, detailing fitting instructions, material specifications, attenuation data, and limited warranty information for various regions. Learn how to properly use and maintain your JVC earplugs.</p>
-------------------------------------------------------------------------------------	--------------------------------------------------------------------------------------------------------------------------------------------------------------------------------------------------------------------------------------------------------------------------------------------------------------------------------------------

	<p>JVC HA-EC25T Wireless Headphones: Startup Guide and Safety Information</p> <p>Get started with your JVC HA-EC25T wireless Bluetooth headphones. This guide covers setup, pairing, controls, sound modes, and essential safety warnings for optimal use.</p>
	<p>JVC HA-NP1T Wireless Headphones: Quick Start Guide, Features, and Safety</p> <p>Get started with your JVC HA-NP1T wireless headphones. This guide covers setup, Bluetooth pairing, battery life, safety precautions, and technical specifications for a seamless audio experience.</p>
	<p>JVC HA-EC25T True Wireless Earbuds Bluetooth 5.0 Product Overview</p> <p>Discover the JVC HA-EC25T true wireless earbuds. Featuring Bluetooth 5.0, IPX4 water resistance, and up to 28 hours of playback with the charging case. Get detailed specifications and safety information.</p>
	<p>JVC HA-A10T Wireless Headphones: Startup Guide and Safety Information</p> <p>Get started with your JVC HA-A10T True Wireless Earbuds. This guide provides setup instructions, safety warnings, Bluetooth specifications, and compliance information for the JVC HA-A10T headphones.</p>
	<p>JVC HA-A18T Wireless Headphones: Startup Guide</p> <p>A concise startup guide for JVC HA-A18T True Wireless Earbuds, covering setup, charging, Bluetooth pairing, usage, and important safety information.</p>