

[Manuals.plus](#) /

› [LEMBERI](#) /

› LEMBERI Gaming Chair Instruction Manual - Model LEMTP

LEMBERI LEMTP

LEMBERI Gaming Chair Instruction Manual

Model: LEMTP

1. INTRODUCTION

Thank you for choosing the LEMBERI Gaming Chair. This manual provides essential information for the proper assembly, operation, and maintenance of your new chair. Please read these instructions carefully before use and retain them for future reference.





Figure 1: LEMBERI Gaming Chair (Grey model shown)

2. IMPORTANT SAFETY INFORMATION

To ensure safe operation and prevent injury, please adhere to the following guidelines:

- This chair has a maximum weight capacity of **400 pounds**. Do not exceed this limit.
- Ensure all bolts and screws are securely tightened during assembly and periodically check for looseness.
- Use the chair on a flat, stable surface to prevent tipping.
- Avoid standing on the chair or using it as a step stool.
- Keep hands and fingers clear of moving parts, especially during height and recline adjustments.
- This chair is suitable for adults, teenagers, and children, but adult supervision is recommended for younger users.
- Do not expose the chair to direct sunlight or extreme temperatures, as this may damage the material.

3. PRODUCT SPECIFICATIONS

Feature	Description
Brand	LEMBERI
Model Name	LEMTP
Color	Grey (as shown in images, other variants available)
Material	Faux Leather, High-Density Foam, Metal Frame
Product Dimensions (D x W x H)	20" x 21.7" x 53"
Overall Size (D x W x H)	24" x 27.2" x 52.9"
Seat Height Adjustment Range	13.4" to 17.3"
Backrest Recline Angle	90° to 155°
Maximum Weight Recommendation	400 Pounds
Gas Lift Class	Class 4
Special Features	Adjustable Backrest, Adjustable Headrest, Adjustable Height, Adjustable Lumbar Support (with massage function), Retractable Footrest, 360° Swivel, Rubber Casters

Adjustable Backrest

Features an independently adjustable backrest, allowing you to adjust the angle of your sitting position throughout your gaming sessions (up to 160°)



Figure 2: Detailed dimensions of the LEMBERI Gaming Chair.

4. PACKAGE CONTENTS

Before beginning assembly, please ensure all components are present and undamaged. The package typically includes:

- Backrest
- Seat Base
- Armrests (2)
- 5-Star Base
- Casters (5)
- Gas Lift Cylinder
- Gas Lift Cover
- Mechanism Plate

- Headrest Pillow
- Lumbar Support Pillow (with USB massage function)
- Retractable Footrest Assembly
- Hardware Kit (screws, washers, Allen wrench)
- Instruction Manual

5. ASSEMBLY INSTRUCTIONS

Follow these steps to assemble your LEMBERI Gaming Chair. It is recommended to have a second person assist with certain steps.

1. **Attach Casters to Base:** Insert the five casters into the holes on the 5-star base until they click securely into place.
2. **Install Gas Lift:** Place the gas lift cylinder into the center hole of the 5-star base. Cover it with the gas lift cover.
3. **Attach Mechanism Plate:** Secure the mechanism plate to the underside of the seat base using the provided screws. Ensure the front of the mechanism faces the front of the seat.
4. **Attach Armrests:** Fasten the armrests to the sides of the seat base using the designated screws.
5. **Connect Seat to Backrest:** Align the backrest with the seat base and secure it using the appropriate screws.
6. **Attach Footrest:** Slide the retractable footrest assembly into the designated slots under the seat.
7. **Place Seat Assembly on Gas Lift:** Carefully place the assembled seat onto the gas lift cylinder.
8. **Attach Pillows:** Secure the headrest pillow and lumbar support pillow to the backrest using their elastic straps.



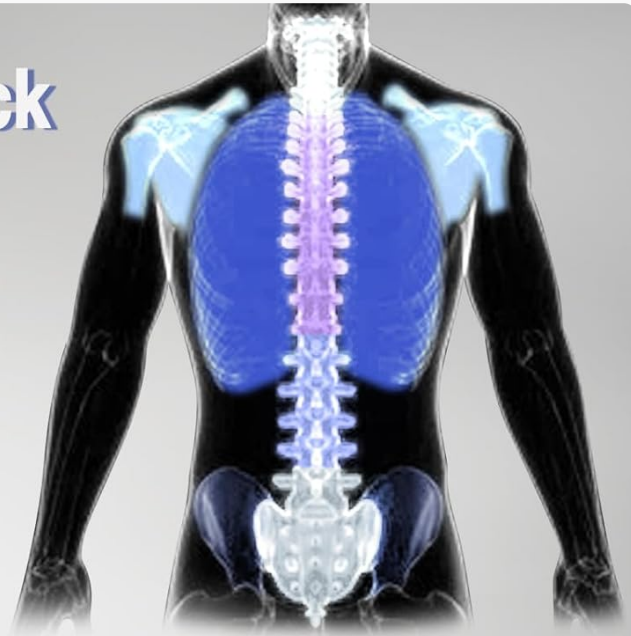
Figure 3: Illustration of the chair's solid base, Class 4 gas lift, and smooth-gliding casters.

6. OPERATING INSTRUCTIONS

Your LEMBERI Gaming Chair offers several adjustable features for personalized comfort:

- **Height Adjustment:** Locate the lever on the right side beneath the seat. Pull the lever up to raise the seat; release it at the desired height. To lower, pull the lever up while seated.
- **Backrest Recline:** Use the lever on the left side of the seat to adjust the backrest angle from 90° (upright) to 155° (reclined). Release the lever to lock the backrest in position.
- **Retractable Footrest:** Pull the footrest handle located under the front of the seat to extend it. Push it back in when not in use.
- **Lumbar Massage Function:** The lumbar support pillow contains a USB-powered massage unit. Connect the USB cable to a power source (e.g., computer, power bank) to activate the massage function.
- **360° Swivel & Mobility:** The chair features a 360-degree swivel and omni-directional rubber casters for easy movement across various surfaces.

Ergonomic chair back



The elasticity of the foam helps improve your comfort and reduce soreness from sitting and adds to the overall durability of the product.



Figure 4: The backrest can be adjusted from 90 to 155 degrees for optimal comfort.



Figure 5: A user demonstrating the extended footrest for relaxation.

Your browser does not support the video tag.

Video 1: Official LEMBERI video showcasing the Big and Tall Gaming Chair's features, including recline and footrest.

7. MAINTENANCE

Proper care will extend the life and appearance of your LEMBERI Gaming Chair:

- **Cleaning:** Wipe clean with a damp cloth. For tougher stains, use a mild soap solution and then wipe with a clean, damp cloth. Avoid harsh chemicals or abrasive cleaners.
- **Inspection:** Periodically check all screws and bolts to ensure they are tight. Re-tighten if necessary.
- **Caster Care:** Keep casters free of hair and debris to ensure smooth rolling.
- **Avoid Overloading:** Do not exceed the 400-pound weight limit.





8. TROUBLESHOOTING

If you encounter any issues with your chair, refer to the following common solutions:

- **Chair Sinks or Won't Stay Up:** Ensure the height adjustment lever is fully engaged. If the issue persists, the gas lift cylinder may need replacement.
- **Chair Wobbles:** Check that all assembly screws are securely tightened. Ensure the 5-star base is properly seated on the gas lift.
- **Casters Not Rolling Smoothly:** Inspect casters for trapped debris (hair, lint) and clean them thoroughly.
- **Backrest Won't Recline/Lock:** Verify that the recline lever is functioning correctly and not obstructed.
- **Lumbar Massage Not Working:** Ensure the USB cable is securely connected to a working power source. Check the cable for any damage.

If these steps do not resolve the issue, please contact LEMBERI customer support.

9. WARRANTY AND SUPPORT

For warranty information, specific terms and conditions, or to contact customer support, please refer to the documentation included with your product or visit the official LEMBERI website. Our customer support team aims to respond within 24 hours for any inquiries or assistance needed.