

## YWBL-WH SF-HD850

# YWBL-WH SF-HD850 Optical Pick-Up Lens Mechanism Instruction Manual

## 1. INTRODUCTION

---

This manual provides essential information for the installation and use of the YWBL-WH SF-HD850 Optical Pick-Up Lens Mechanism. This component is designed as a replacement part for DVD and EVD players, responsible for reading data from optical discs. Proper installation is crucial for optimal performance.

## 2. PRODUCT FEATURES

---

- **Model:** SF-HD850
- **Type:** Optical Pick-Up Lens Mechanism
- **Color:** Black
- **Weight:** Approximately 90g (3.2oz)
- **Construction:** Forged with quality materials, featuring fine workmanship and a standardized design for reliable performance.
- **Function:** Serves as the core component of the optical drive, primarily responsible for accurate data reading from DVDs and EVDs.

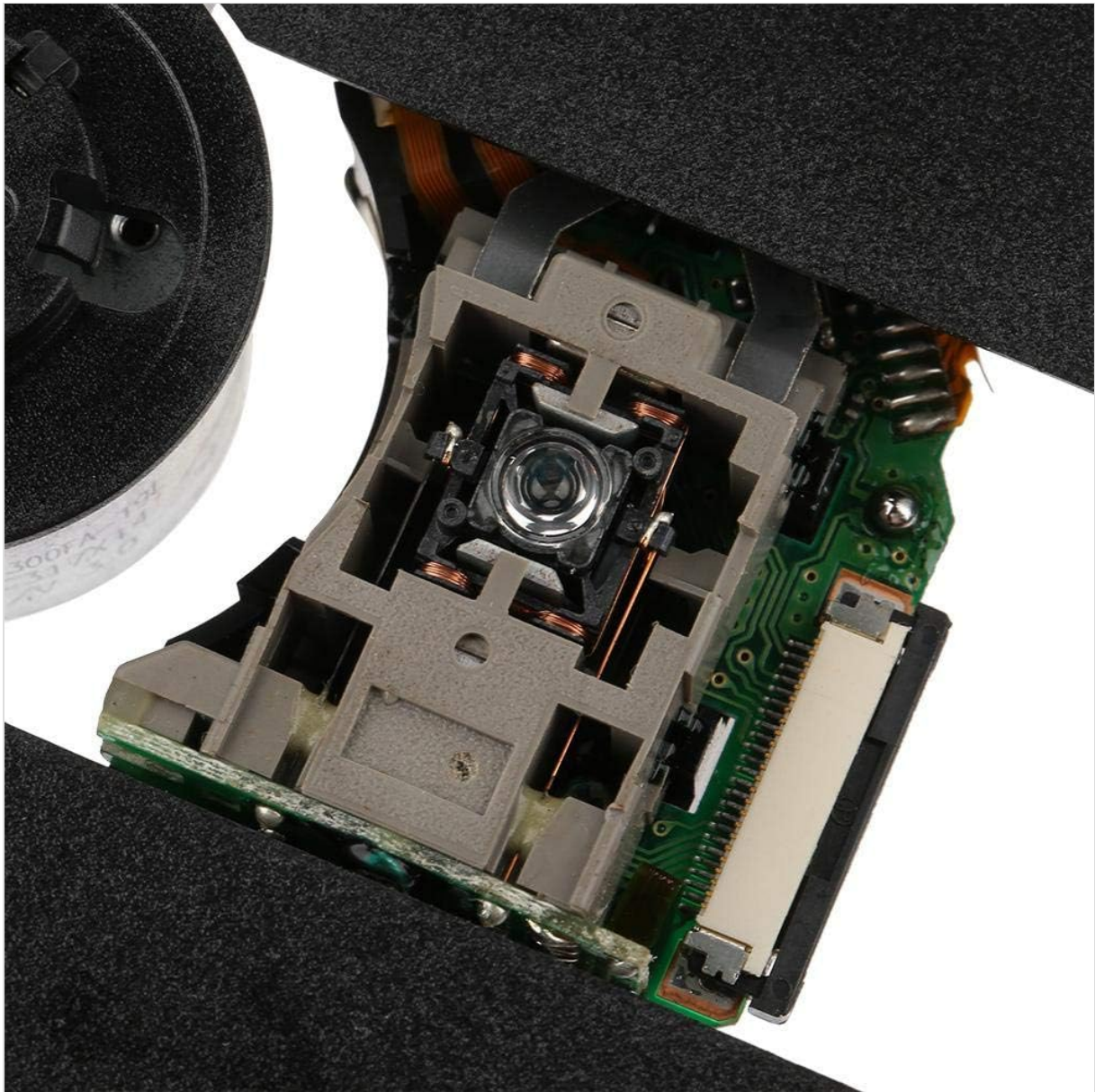


Image 2.1: Overview of the SF-HD850 Optical Pick-Up Lens Mechanism, showing the main unit and connecting wires.

### 3. INSTALLATION GUIDE

The SF-HD850 is a sensitive electronic component. Installation should be performed by individuals with appropriate technical knowledge and tools. Always ensure the device is powered off and disconnected from the power source before beginning installation.

1. **Preparation:** Disconnect the DVD/EVD player from all power sources. Open the device casing carefully to access the optical drive unit.
2. **Remove Old Unit:** Carefully disconnect the ribbon cable and any power cables from the existing optical pick-up unit. Unscrew and remove the old mechanism.
3. **Install New Unit:** Position the new SF-HD850 mechanism in place. Secure it with the appropriate screws. Reconnect the ribbon cable and power cables, ensuring they are seated correctly and securely.
4. **Remove Anti-Static Solder Joint:** *Crucial Step:* Before powering on the device, locate the anti-static solder joint on the circuit board near the ribbon cable connector. This solder point must be carefully desoldered and removed. Failure to remove this protective solder joint will prevent the laser from functioning.
5. **Reassembly:** Once the new mechanism is installed and the anti-static solder joint is removed,

carefully reassemble the device casing.

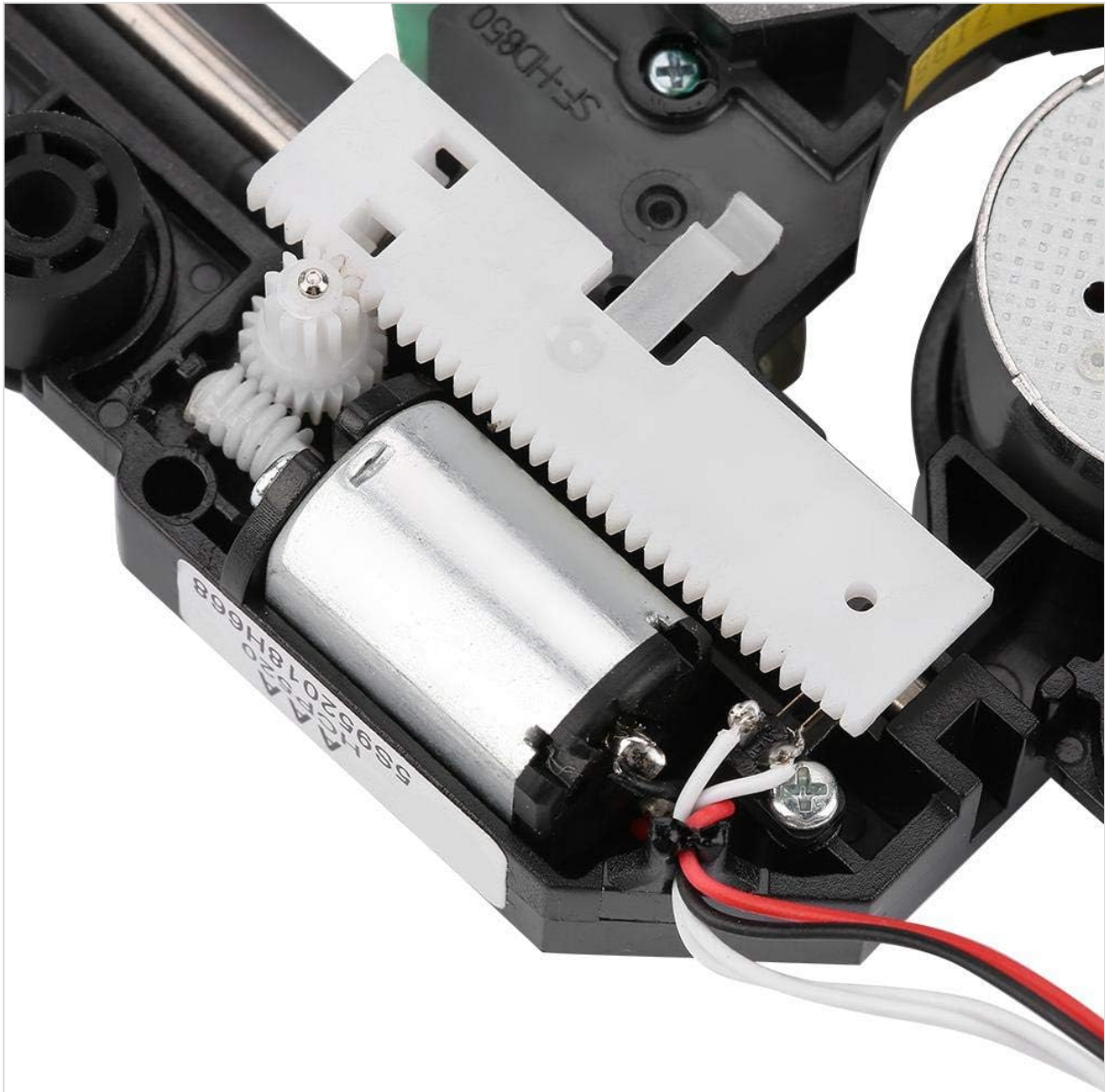


Image 3.1: Detail of the SF-HD850 circuit board, highlighting the area where the anti-static solder joint is typically located for removal.

Video 3.1: This video demonstrates the SF-HD850 Optical Pick-Up Laser Lens Mechanism, showing various angles and components. It can provide visual context for the part's structure and connections, which may aid in installation.

## 4. OPERATION

Once the SF-HD850 Optical Pick-Up Lens Mechanism is correctly installed and the anti-static solder joint has been removed, the DVD/EVD player should resume normal operation. The mechanism will automatically read data from inserted optical discs. No specific user operation is required for the pick-up lens itself beyond the normal use of the DVD/EVD player.

## 5. MAINTENANCE

The SF-HD850 is a sealed unit and does not require routine user maintenance. To ensure longevity and optimal performance of your DVD/EVD player:

- Keep the device in a clean, dust-free environment.
- Avoid exposing the device to extreme temperatures or humidity.

- Handle optical discs carefully to prevent scratches or damage, which can affect the pick-up lens's ability to read data.

## 6. TROUBLESHOOTING

If your DVD/EVD player does not function correctly after installing the SF-HD850, consider the following:

- **No Disc Reading:** Verify that the anti-static solder joint has been completely removed. This is the most common reason for a new optical pick-up unit not functioning.
- **Intermittent Reading/Skipping:** Check all cable connections (ribbon and power) to ensure they are firmly seated.
- **Power Issues:** Ensure the device is receiving power and that all internal power connections are secure.
- **Physical Damage:** Inspect the new SF-HD850 unit for any visible damage that might have occurred during installation.

If issues persist after checking these points, professional assistance may be required.

## 7. SPECIFICATIONS

<b>Model</b>	SF-HD850
<b>Type</b>	Optical Pick-Up Lens Mechanism
<b>Product Dimensions</b>	1 x 1 x 1 inches (approximate)
<b>Item Weight</b>	1.44 ounces (approximate)
<b>Manufacturer</b>	YWBL-WH

## 8. WARRANTY AND SUPPORT

For any questions or concerns regarding the YWBL-WH SF-HD850 Optical Pick-Up Lens Mechanism, please contact our customer service. We are committed to providing satisfactory solutions to all inquiries within 24 hours.