

Paul Neuhaus 9668-13

Paul Neuhaus LED Up and Down Outdoor Wall Light - Model 9668-13

Instruction Manual

1. INTRODUCTION

Thank you for choosing the Paul Neuhaus LED Up and Down Outdoor Wall Light, Model 9668-13. This manual provides essential information for the safe installation, operation, and maintenance of your new lighting fixture. Please read these instructions carefully before installation and retain them for future reference.

This modern, rectangular outdoor wall light features an anthracite finish and emits a warm white light both upwards and downwards, creating an inviting ambiance. Constructed from durable aluminum, it is designed for outdoor use with an IP54 protection rating, ensuring resistance to water splashes.



Image 1.1: Front view of the Paul Neuhaus LED Up and Down Outdoor Wall Light, showing its illumination pattern on a textured wall.

2. PACKAGE CONTENTS

Please check that all components are present and undamaged. If any parts are missing or damaged, contact your retailer.

- 1x Paul Neuhaus LED Up and Down Outdoor Wall Light (Model 9668-13)
- 1x Mounting Hardware Kit (screws, wall plugs)
- 1x Instruction Manual

3. SAFETY INSTRUCTIONS

For your safety, always follow these precautions:

- **Electrical Installation:** Installation must be carried out by a qualified electrician in accordance with local wiring regulations and standards.
- **Power Disconnection:** Always disconnect the main power supply at the fuse box or circuit breaker before commencing any installation, maintenance, or repair work.
- **Voltage:** Ensure the supply voltage matches the fixture's requirements (230 Volts).
- **IP Rating:** This fixture is rated IP54, making it suitable for outdoor use and protected against dust ingress and splashing water from any direction. Do not submerge the fixture in water.
- **Handling:** Handle the fixture with care. Avoid touching the LED light source directly when illuminated, as it may be hot.
- **Modifications:** Do not modify the product in any way. Unauthorized modifications may void the warranty and pose safety risks.

4. SETUP AND INSTALLATION

Tools Required: Drill, screwdriver, wire strippers, pencil, measuring tape, spirit level.

1. **Prepare the Installation Area:** Choose a suitable wall location for mounting. Ensure the surface is solid and can support the fixture's weight. Mark the drilling points using the fixture's mounting plate as a template.
2. **Drill Holes:** Drill holes at the marked positions. Insert the provided wall plugs into the drilled holes.
3. **Connect Wiring:** Disconnect the main power supply. Connect the household electrical wires to the fixture's terminals. Ensure correct polarity (Live, Neutral, Earth) according to local regulations. Secure all connections.
4. **Mount the Fixture:** Secure the fixture's mounting plate to the wall using the screws. Carefully attach the light fixture body to the mounting plate, ensuring a tight and secure fit to maintain the IP54 rating.

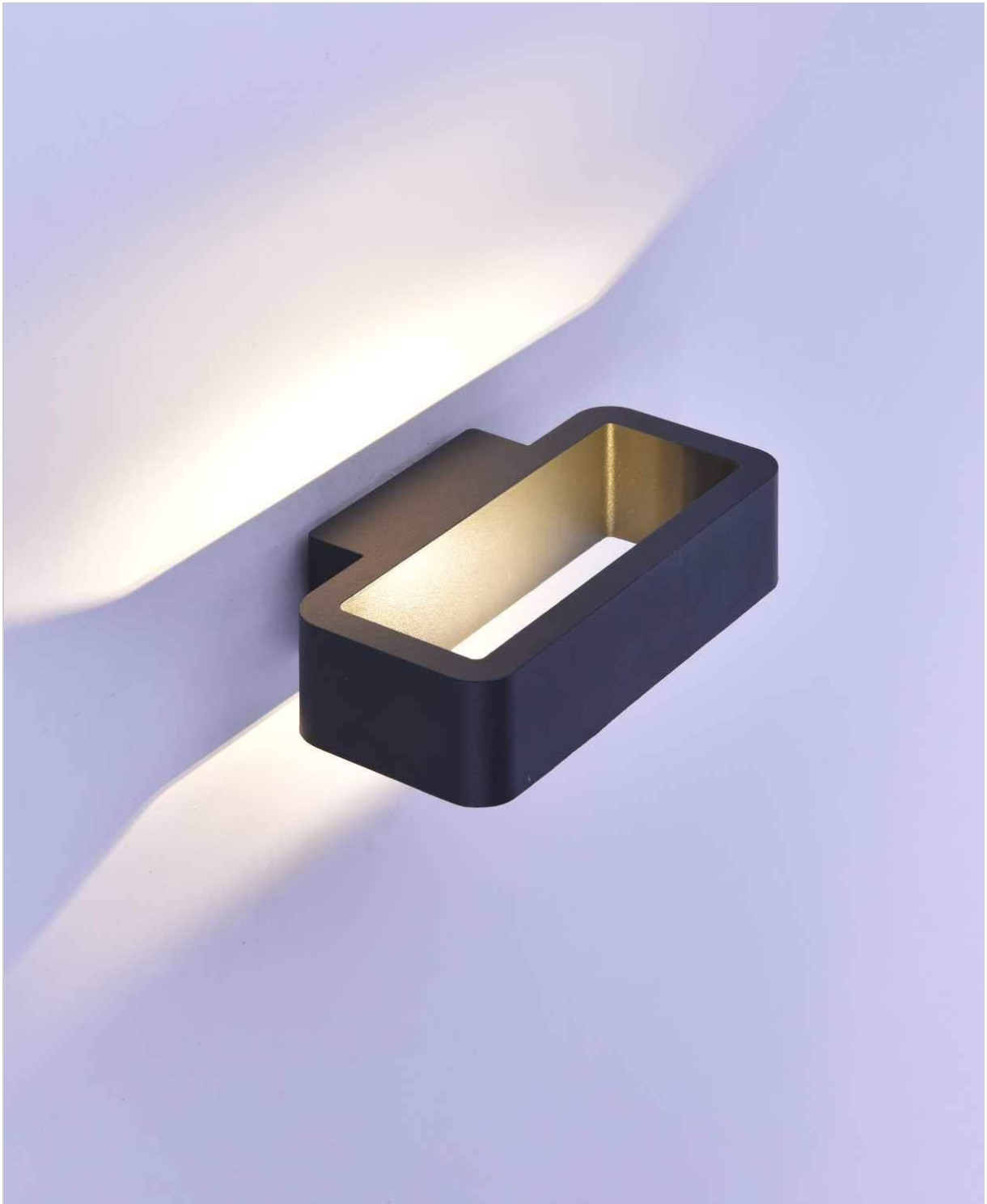


Image 4.1: Side view of the wall light, illustrating the upward and downward light projection.

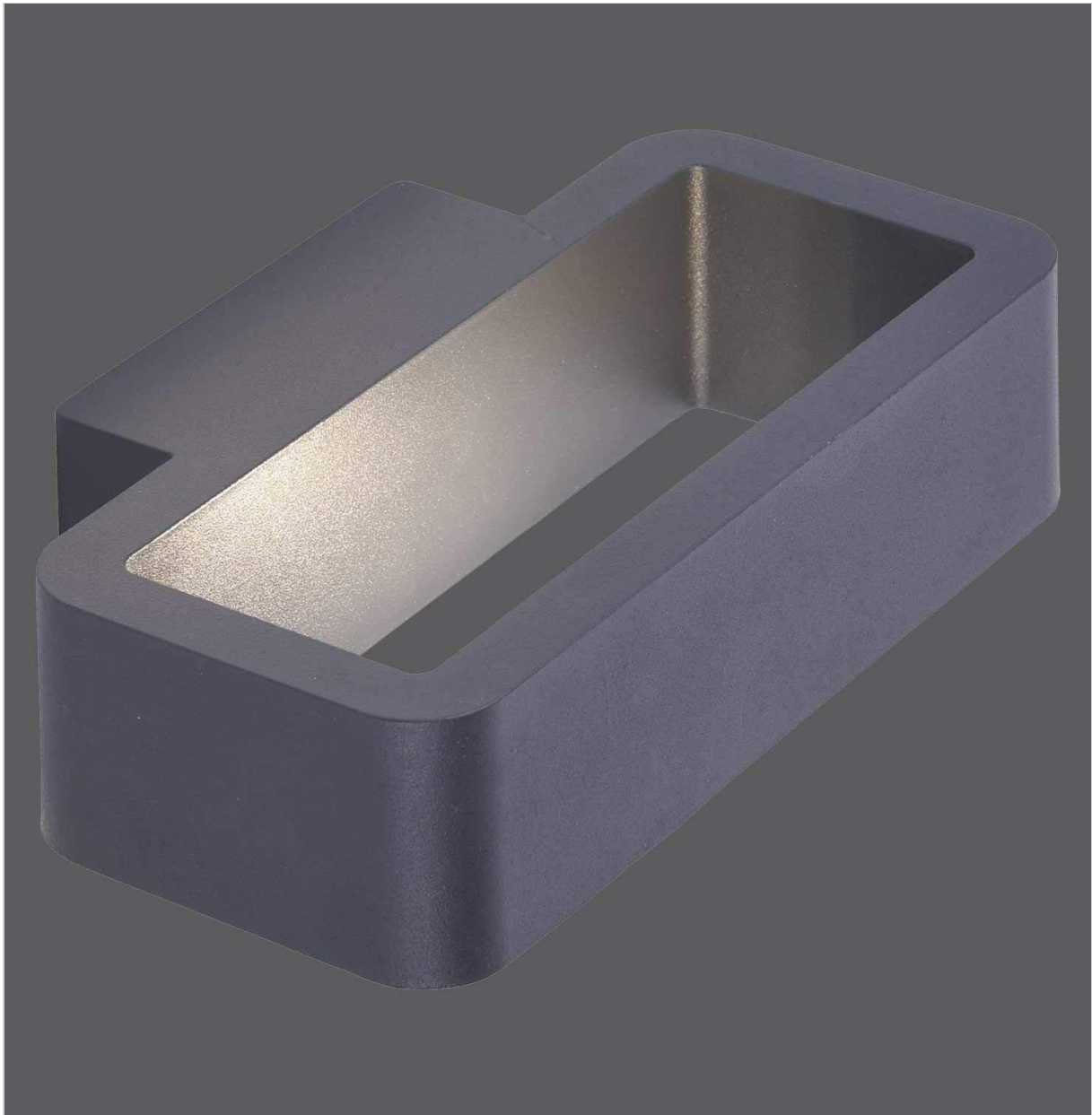


Image 4.2: Close-up view of the unlit fixture, highlighting its anthracite aluminum construction.

5. OPERATING INSTRUCTIONS

Once the fixture is securely installed and wired correctly, restore power at the main circuit breaker. The light will illuminate when the connected wall switch is turned on. There are no additional controls on the fixture itself.

6. MAINTENANCE

To ensure the longevity and appearance of your Paul Neuhaus LED wall light:

- **Cleaning:** Disconnect power before cleaning. Wipe the fixture with a soft, damp cloth. Do not use abrasive cleaners, solvents, or harsh chemicals, as these can damage the finish or electrical components.
- **LED Module:** The LED light source is integrated and not user-replaceable. Do not attempt to open the fixture to replace the LED.
- **Inspection:** Periodically inspect the fixture for any signs of damage or wear, especially the wiring and seals, to maintain its IP54 rating.

7. TROUBLESHOOTING

If the light fixture does not operate as expected, refer to the following troubleshooting guide:

Problem	Possible Cause	Solution
Light does not turn on.	No power supply.	Check the circuit breaker and wall switch. Ensure power is restored.
	Incorrect wiring.	Disconnect power and re-check all electrical connections. Consult a qualified electrician if unsure.
	Damaged LED module.	If other solutions fail, the integrated LED module may be faulty. Contact customer support for assistance.

If you are unable to resolve the issue, please contact Paul Neuhaus customer support or your retailer.

8. SPECIFICATIONS

Brand	Paul Neuhaus
Model Number	9668-13
Dimensions (L x W x H)	22 x 13 x 5 cm
Weight	2 kg
Material	Aluminum
Color	Anthracite
Shape	Rectangular
Voltage	230 Volts
Power Consumption	5 Watts
Light Color	Warm White
Bulb Type	Integrated LED
IP Rating	IP54 (Protected against dust and splashing water)
Installation Type	Wall Mount
Special Features	Energy Efficient
Energy Efficiency Class	F

Note: While the product description indicates IP54 for outdoor use, some internal component specifications may list IP20. The overall product enclosure is designed and rated for IP54 outdoor protection.

9. WARRANTY AND SUPPORT

Specific warranty information for this product may vary by region and retailer. Please refer to your purchase documentation or contact your point of sale for details regarding warranty coverage.

For technical support or inquiries, please contact Paul Neuhaus customer service or visit their official website.

Keep your proof of purchase handy when contacting support.

