

[Manuals.plus](#) /

› [Enbrighten](#) /

› Enbrighten Z-Wave Plus Fan Control Instruction Manual

Enbrighten 14314

Enbrighten Z-Wave Plus In-Wall Smart Fan Control

Model: 14314 (500 Series)

INTRODUCTION

Thank you for choosing the Enbrighten Z-Wave Plus In-Wall Smart Fan Control. This device allows you to wirelessly control and adjust the speed of your ceiling fan from anywhere when paired with a compatible Z-Wave hub. It offers convenient automation possibilities for your home, integrating seamlessly with various smart home systems.



Image: The Enbrighten Z-Wave Plus In-Wall Smart Fan Control, highlighting its features and compatibility.

SAFETY INFORMATION

Read all instructions before installation and use. Adhere to all national and local electrical codes. If you are unsure about any part of these instructions, consult a qualified electrician.

- **RISK OF SHOCK:** Disconnect power at the circuit breaker or fuse box before installation.
- **RISK OF FIRE:** Do not exceed the maximum load rating of 2.5 Amps for the fan.
- This device is designed for use with permanent ceiling fans only. Do not use with exhaust fans, fans with remote controls, or fans with built-in speed controls.
- Ensure proper grounding. A neutral wire is required for operation.
- Install indoors only.

PACKAGE CONTENTS

- 1 x Enbrighten Z-Wave Plus In-Wall Smart Fan Control
- 1 x White Paddle (pre-installed)
- 1 x Light Almond Paddle
- Instruction Manual

PRODUCT OVERVIEW AND FEATURES

The Enbrighten Z-Wave Plus Fan Control is designed to provide smart control over your ceiling fan.

- **Wireless Control:** Remotely turn on/off and adjust fan speeds (High, Medium, Low).
- **Z-Wave Plus Certified:** Ensures broad compatibility with Z-Wave hubs and devices.
- **Range Extender:** Repeats Z-Wave signals to extend network range up to 150ft.
- **Changeable Paddles:** Includes white and light almond paddles to match your decor.
- **3-Way Compatible:** Can be used in single-pole or 3-way installations (requires additional switch, sold separately).

Customize Scenes

Control and Schedule Ceiling Fan Speed from Anywhere

Schedule Timed Events

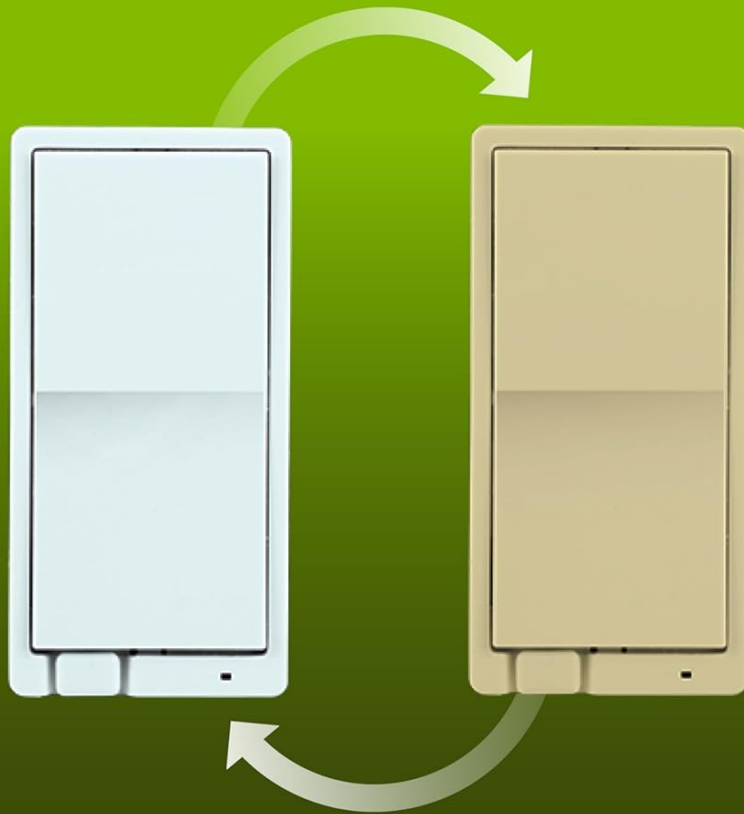
Works with any device!*

Wireless control from smartphones, tablets and PCs

*Requires Smart Hub

Image: Visual representation of the smart fan control's capabilities, including scene customization, remote control, scheduling, and device

CHANGEABLE PADDLES



Includes white and light almond
*Ivory, brown and black sold separately

Image: The included white and light almond paddles, demonstrating their interchangeability to match different interior designs.

INSTALLATION

Wiring Diagram

Before beginning, ensure power is OFF at the circuit breaker. This device requires a neutral wire.

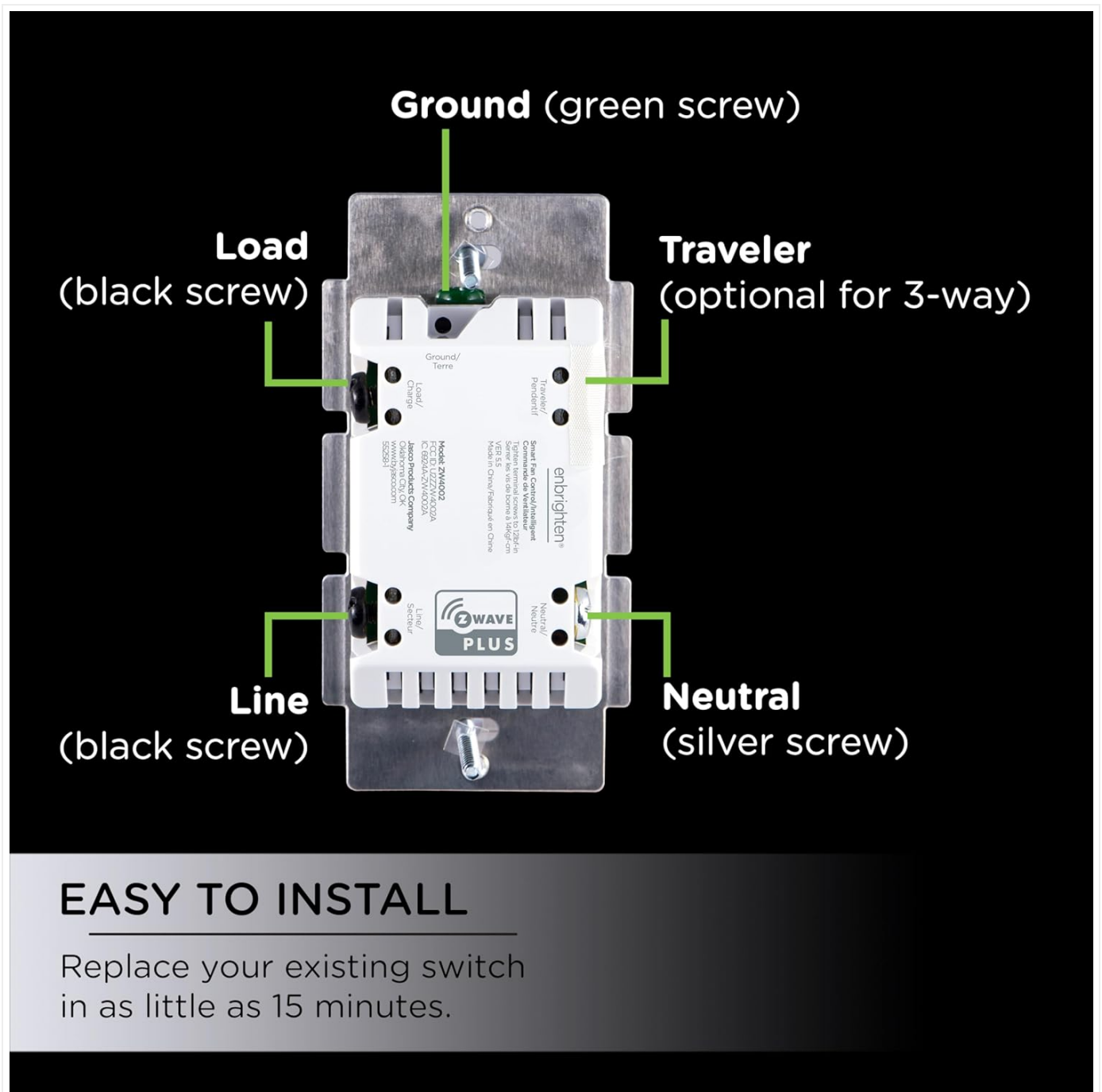


Image: Detailed wiring diagram illustrating how to connect the fan control to your home's electrical system, including ground, load, traveler, line, and neutral connections.

Step-by-Step Installation

1. **Turn Off Power:** Locate the circuit breaker controlling the fan and turn it OFF. Verify power is off by toggling the existing fan switch.
2. **Remove Old Switch:** Unscrew and carefully pull the existing switch from the wall box. Disconnect all wires from the old switch.
3. **Identify Wires:**
 - **Line (Hot):** Usually black, coming from the circuit breaker.
 - **Load:** Usually black, going to the fan.
 - **Neutral:** Usually white, often bundled in the back of the box. (REQUIRED)
 - **Ground:** Usually green or bare copper.
 - **Traveler (for 3-way):** Only present in 3-way installations.

4. **Connect Wires:**

- Connect the green or bare copper ground wire from the wall box to the fan control's GREEN terminal.
- Connect the Line (hot) wire to one of the fan control's BLACK terminals (labeled "LINE").
- Connect the Load wire (to fan) to the other BLACK terminal (labeled "LOAD").
- Connect the Neutral wire from the wall box to the fan control's SILVER terminal (labeled "NEUTRAL").
- If installing in a 3-way setup, connect the Traveler wire to the fan control's YELLOW/RED terminal (labeled "TRAVELER"). Cap any unused traveler wires.

5. **Mount Switch:** Carefully push the wired fan control into the wall box. Secure it with the provided screws.

6. **Attach Wallplate:** Install the wallplate (sold separately).

7. **Restore Power:** Turn the power back ON at the circuit breaker.

OPERATING INSTRUCTIONS

Manual Control

- **ON/OFF:** Press the top or bottom of the rocker switch to turn the fan ON or OFF.
- **Speed Adjustment:** Press the small button below the rocker switch repeatedly to cycle through fan speeds: Low, Medium, High, Off.

Z-Wave Pairing (Inclusion)

To add the fan control to your Z-Wave network, follow these steps:

1. Place your Z-Wave controller into inclusion (pairing) mode. (Refer to your Z-Wave hub's manual for specific instructions).
2. Press the top or bottom of the fan control's rocker switch once. The LED indicator will flash to confirm inclusion mode.
3. The fan control will automatically be added to your network. The LED will stop flashing once successfully paired.
4. You can now control the fan speed and ON/OFF status through your Z-Wave hub's interface or connected voice assistants (e.g., Alexa, Google Assistant).

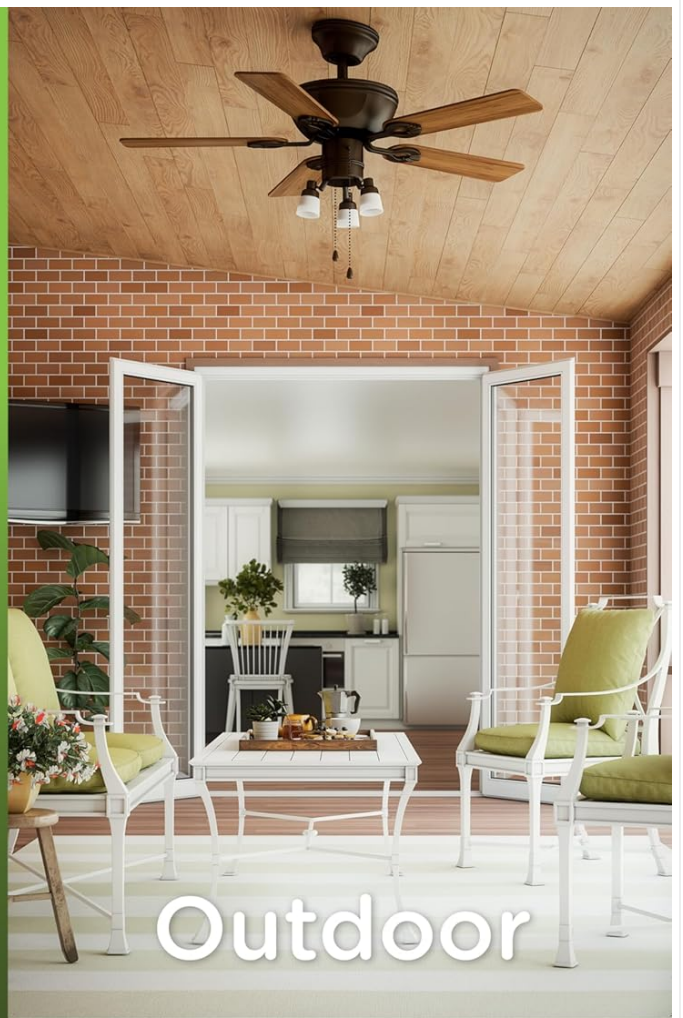
Z-Wave Unpairing (Exclusion)

To remove the fan control from your Z-Wave network:

1. Place your Z-Wave controller into exclusion (unpairing) mode.
2. Press the top or bottom of the fan control's rocker switch once. The LED indicator will flash to confirm exclusion mode.
3. The fan control will be removed from your network. The LED will stop flashing once successfully unpaired.



Indoor



Outdoor

Wirelessly control, adjust speed (low, medium and high) and program scheduled events for fans from anywhere*

Image: The smart fan control enables wireless control and scheduling of ceiling fans in both indoor and outdoor settings.

MAINTENANCE

The Enbrighten Z-Wave Plus Fan Control requires minimal maintenance.

- Clean the surface with a soft, damp cloth. Do not use abrasive cleaners or solvents.
- Ensure the device is not exposed to excessive moisture or extreme temperatures.

TROUBLESHOOTING

Problem	Possible Cause	Solution
---------	----------------	----------

Problem	Possible Cause	Solution
Fan does not turn ON/OFF or respond to control.	<p>No power to the switch.</p> <p>Incorrect wiring.</p> <p>Not properly paired with Z-Wave hub.</p> <p>Fan motor issue.</p>	<p>Check circuit breaker.</p> <p>Verify wiring connections according to the diagram.</p> <p>Ensure neutral wire is connected.</p> <p>Perform Z-Wave exclusion then re-inclusion.</p> <p>Test fan with a standard switch to rule out fan motor issues.</p>
Fan speed does not change.	<p>Incompatible fan type.</p> <p>Z-Wave hub not sending correct speed commands.</p>	<p>Ensure fan is a permanent ceiling fan without built-in speed control.</p> <p>Consult your Z-Wave hub's documentation for fan speed control settings.</p>
LED indicator is not lit.	<p>No power.</p> <p>Device malfunction.</p>	<p>Check power at the circuit breaker.</p> <p>Contact customer support if power is confirmed and LED remains off.</p>

SPECIFICATIONS

Attribute	Value
Model Number	14314
Power	120VAC, 60Hz
Maximum Load	2.5 Amps (Fan)
Wireless Protocol	Z-Wave Plus
Operating Temperature	32°F to 104°F (0°C to 40°C)
Dimensions (L x W x H)	1.8 x 2.2 x 4.15 inches (approx.)
Color	White (with Light Almond paddle included)
Circuit Type	Single-pole or 3-way
Neutral Wire Required	Yes

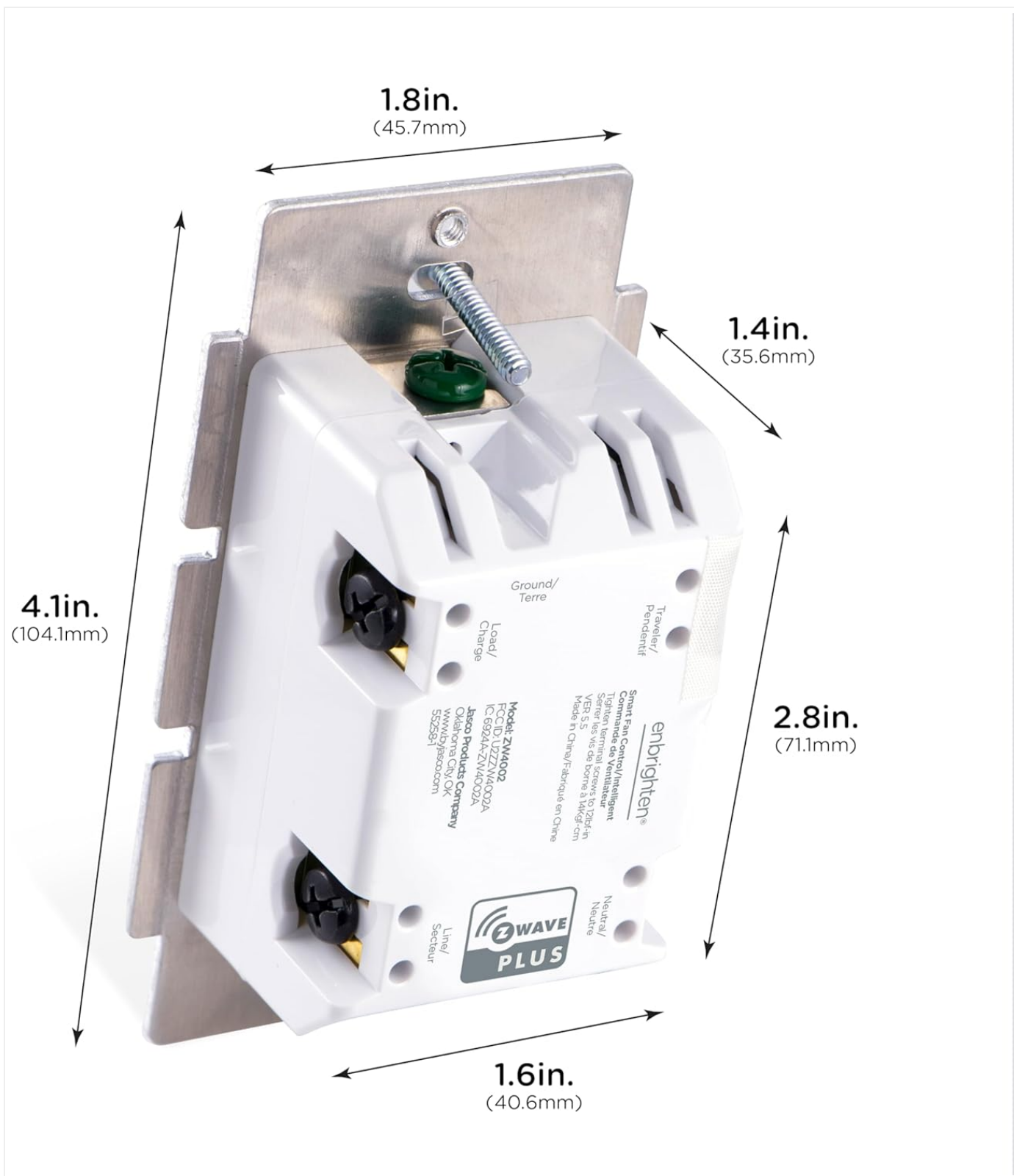


Image: Dimensional drawing of the fan control, providing precise measurements for installation planning.

WARRANTY AND SUPPORT

Enbrighten products are backed by a limited-lifetime warranty. For warranty details, technical support, or to register your product, please visit the official Enbrighten website or contact customer service.

- **Manufacturer:** Jasco Products Company, LLC
- **Website:** byjasco.com (General Jasco site, Enbrighten is a brand under Jasco)
- **Support Contact:** Refer to the manufacturer's website for the most current contact information.



© 2024 Enbrighten. All rights reserved.