

## NVX XC4N1

# NVX XC4N1 Universal 4-in-1 Rearview Backup Camera Instruction Manual

Model: XC4N1

## INTRODUCTION

---

This manual provides detailed instructions for the installation, operation, and maintenance of your NVX XC4N1 Universal 4-in-1 Rearview Backup Camera. Please read this manual thoroughly before installation and use to ensure proper function and safety.



Image: The NVX XC4N1 camera shown with its various mounting configurations, highlighting its versatility.

## SAFETY INFORMATION

---

- Always disconnect the vehicle's battery before performing any electrical work.
- Ensure all wiring is properly insulated and secured to prevent short circuits or damage.
- Do not obstruct the driver's view or interfere with vehicle controls during installation.
- This camera is an aid for reversing and parking; it does not replace the driver's responsibility to check surroundings.
- Consult a professional if you are unsure about any installation steps.

## PACKAGE CONTENTS

---

Verify that all components are present before beginning installation:

- NVX XC4N1 Backup Camera Unit
- Square Mount
- Angled Mount
- Flush Mount
- Rubber Mount

- License Plate Bar Mount
- Power Cable
- RCA Video Cable
- Mounting Hardware (screws, adhesive pad)



Image: The main camera unit with its attached power and RCA video cables.



Image: A collection of mounting brackets and screws included with the camera for different installation types.



Image: Supplementary mounting accessories, including a flush mount housing and adhesive pad.

## SETUP AND INSTALLATION

The NVX XC4N1 offers four primary mounting options to suit various vehicle types and preferences.

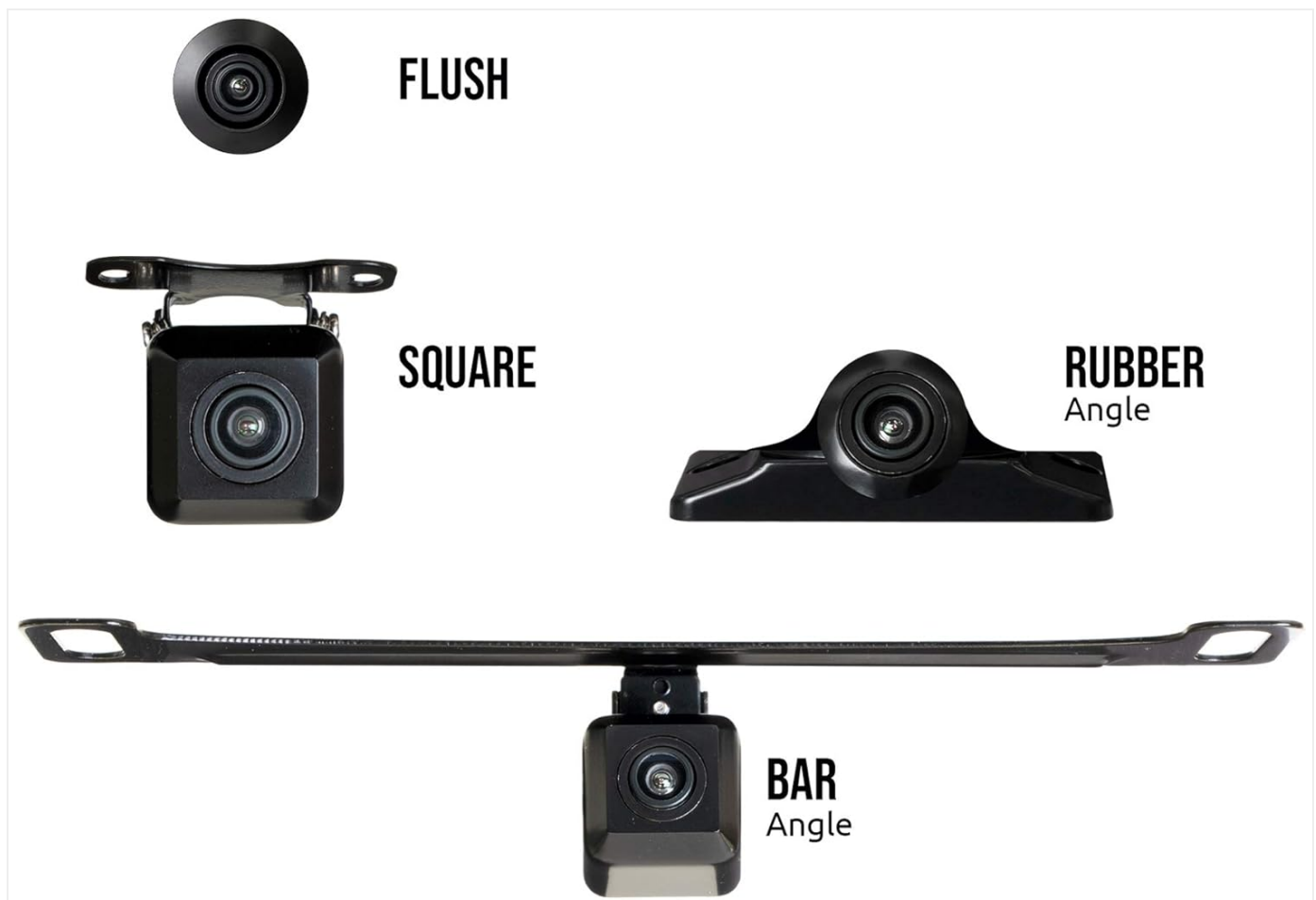


Image: Visual representation of the four mounting styles: Flush, Square, Rubber (angled), and Bar (angled for license plate).

### Mounting Options:

- **Flush Mount:** For a discreet, integrated look. Requires drilling a hole for the camera body.

- **Square Mount:** A surface-mount option, typically used on flat areas.
- **Rubber Mount (Angled):** Provides an angled view, often used for specific bumper or panel contours.
- **License Plate Bar Mount (Angled):** Designed to attach to the vehicle's license plate frame for easy installation.

## General Installation Steps:

1. **Choose Mounting Location:** Select the optimal mounting location based on visibility and vehicle aesthetics.
2. **Install Camera Mount:** Secure the chosen mount using the provided screws or adhesive. Ensure the camera is oriented correctly.
3. **Route Cables:** Carefully route the power and video cables from the camera to the vehicle's interior, avoiding moving parts, sharp edges, and heat sources.
4. **Connect Power:**
  - Connect the red wire of the power cable to a 12V reverse light power source (positive). This ensures the camera activates when the vehicle is in reverse.
  - Connect the black wire of the power cable to a vehicle ground (negative).
5. **Connect Video:**
  - Connect the yellow RCA video cable from the camera to the video input of your display monitor or head unit.
  - If your monitor requires a trigger wire for reverse activation, connect the small red wire integrated into the RCA cable to the reverse trigger input of your monitor.
6. **Test System:** Reconnect the vehicle battery. Engage reverse gear (with the parking brake on and foot on the brake pedal) to verify the camera image appears on your display.
7. **Finalize Installation:** Secure all cables and components, ensuring no loose wires or potential hazards.

## OPERATING INSTRUCTIONS

---

The NVX XC4N1 camera automatically activates when the vehicle is shifted into reverse, displaying the rear view on your connected monitor.

### Key Features:

- **Ultra-Wide 170-Degree View:** Provides an expansive field of view behind your vehicle, minimizing blind spots.

# ULTRA-WIDE VIEWING

170° viewing angle



Image: A visual representation of the camera's 170-degree wide viewing angle, showing an extended area behind a vehicle.

- **Parking Lines:** Integrated color parking lines assist in judging distance and alignment. These lines are fixed and cannot be adjusted.



# CAMERA FOOTAGE

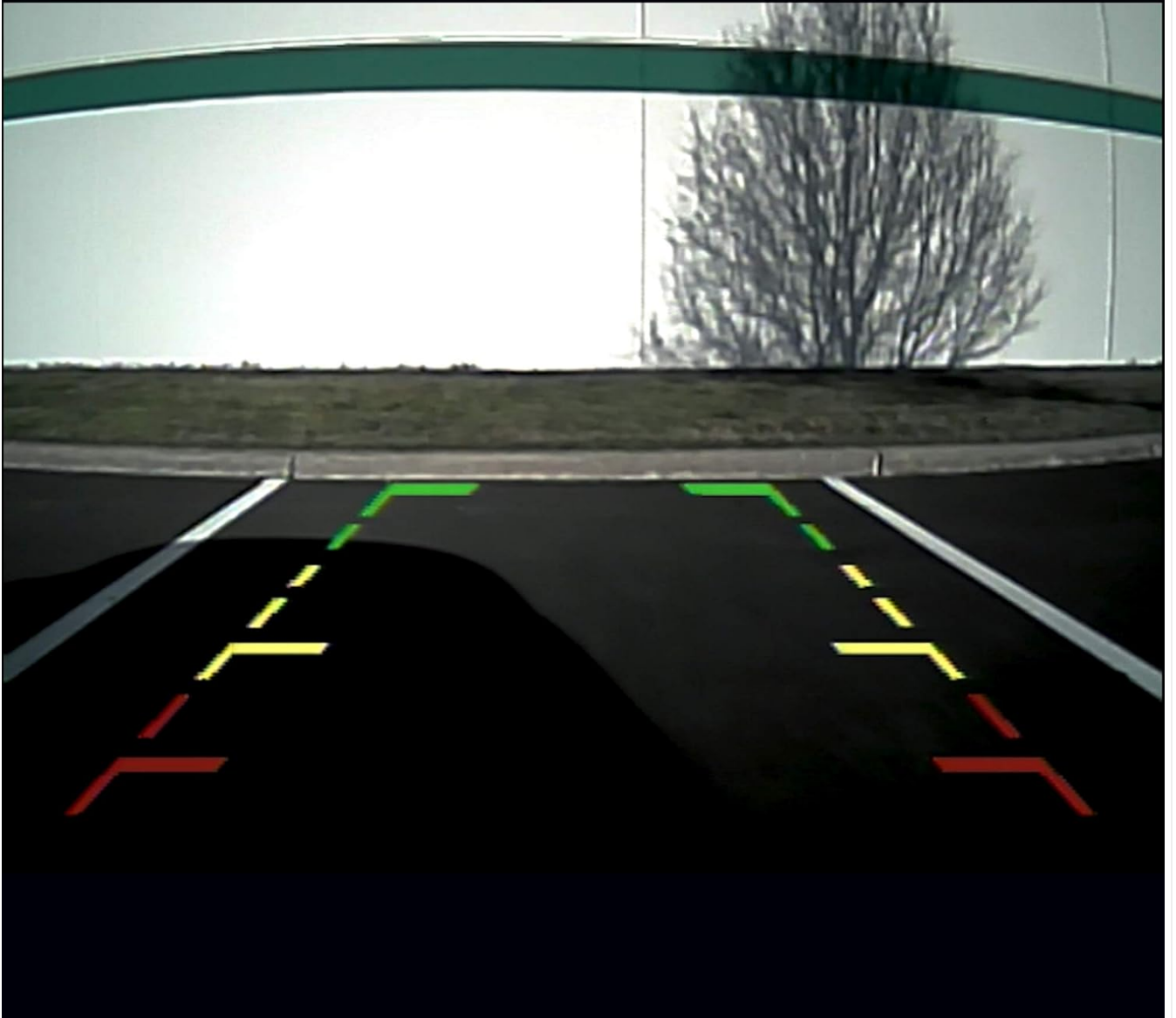


Image: A screenshot of the camera's output, showing green, yellow, and red parking guide lines overlaid on the rear view.

- **Ultra-Low Lux Night Vision:** The camera operates effectively in low-light conditions with a minimum illumination of 0.08 Lux, enhancing visibility at night.

# ULTRA-LOW LUX NIGHT VISION

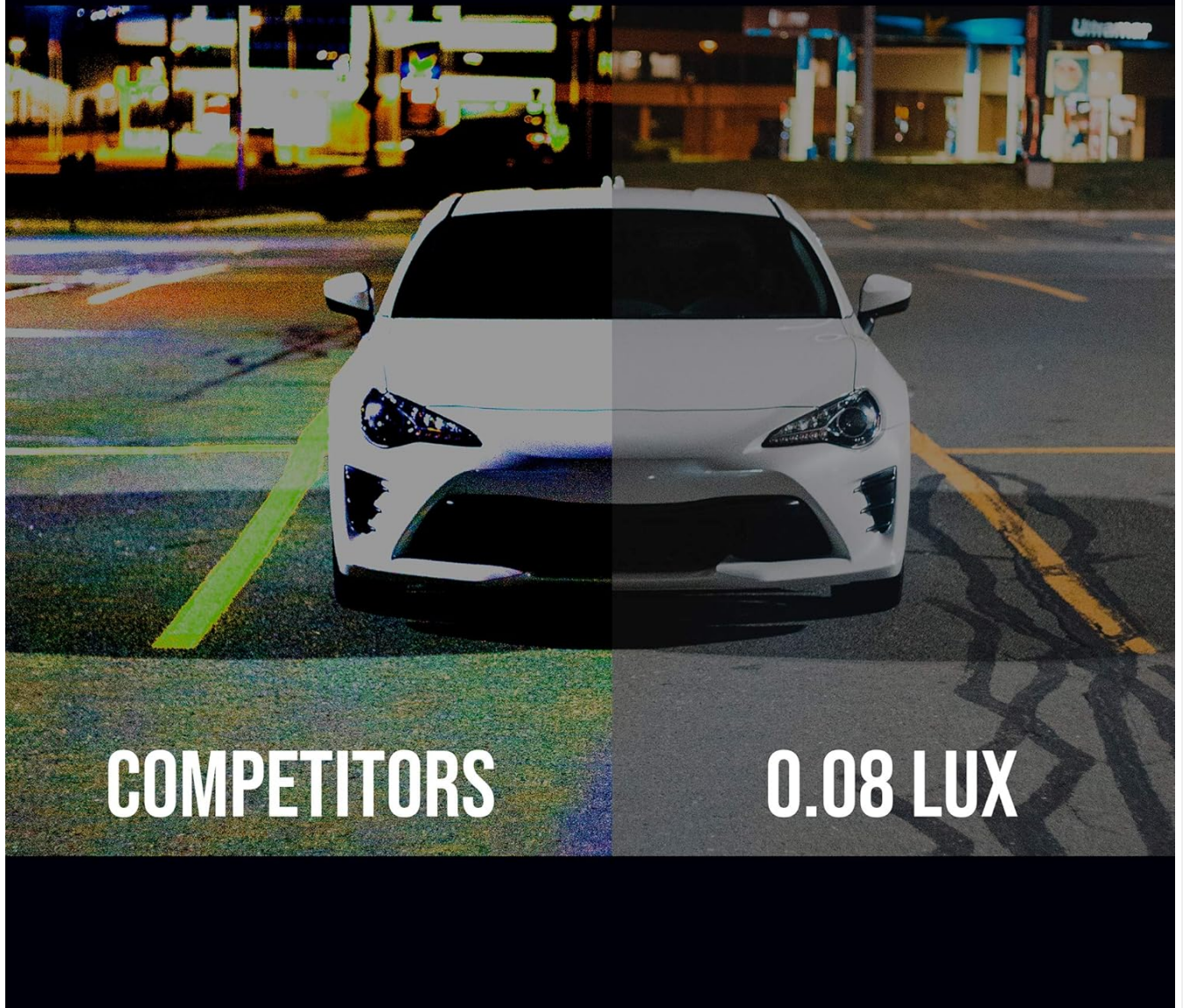


Image: A split image comparing the night vision performance of a competitor's camera (left, darker) versus the NVX XC4N1 (right, brighter) in low light conditions.

- **Penetrating Fog Function:** Designed to improve visibility in foggy conditions.

## MAINTENANCE

The NVX XC4N1 camera is designed for durability and minimal maintenance.

- **Waterproof Construction:** The camera is IP68 certified, meaning it is fully dustproof and can withstand submersion in water. This protects it from rain, car washes, and other environmental elements.



# IP68 WATERPROOF

fully dustproof and waterproof



Image: The camera lens partially submerged in water, illustrating its IP68 waterproof capability.

- **Cleaning:** Periodically clean the camera lens with a soft, damp cloth to ensure a clear image. Avoid abrasive cleaners or materials that could scratch the lens.
- **Cable Inspection:** Occasionally check the cables for any signs of wear, damage, or loose connections.

## TROUBLESHOOTING

If you encounter issues with your NVX XC4N1 camera, refer to the following common problems and solutions:

Problem	Possible Cause	Solution
---------	----------------	----------

Problem	Possible Cause	Solution
No image on display when in reverse.	<ul style="list-style-type: none"><li>Loose power or video connection.</li><li>Incorrect power source.</li><li>Monitor not set to correct input.</li><li>Blown fuse in reverse light circuit.</li></ul>	<ul style="list-style-type: none"><li>Check all cable connections (power, ground, RCA).</li><li>Verify the camera's red power wire is connected to a 12V reverse light positive.</li><li>Ensure your monitor is switched to the correct video input (e.g., AV-IN 2).</li><li>Inspect vehicle fuses.</li></ul>
Image is blurry or distorted.	<ul style="list-style-type: none"><li>Dirty camera lens.</li><li>Loose video cable connection.</li><li>Electrical interference.</li></ul>	<ul style="list-style-type: none"><li>Clean the camera lens with a soft cloth.</li><li>Check the RCA video cable connections at both ends.</li><li>Ensure video cables are routed away from high-current power cables.</li></ul>
Parking lines are not visible.	<ul style="list-style-type: none"><li>This camera model has integrated parking lines that are always active. If not visible, it may indicate a camera malfunction or display issue.</li></ul>	<ul style="list-style-type: none"><li>Verify camera is receiving power and sending video signal.</li><li>Test with a different monitor if possible.</li></ul>







## SPECIFICATIONS

Feature	Detail
Model	XC4N1
Brand	NVX
Resolution	720 x 480 pixels
Viewing Angle	170 Degrees (Real Angle of View)
Optical Sensor Technology	CMOS
Optical Sensor Size	1/3 inch
Minimum Illumination	0.08 Lux
Waterproof Rating	IP68
Voltage	12 Volts
Connector Type	RCA
Installation Type	Bracket Mount (4-in-1 Universal)
Item Weight	1.5 pounds

## WARRANTY AND SUPPORT

For warranty information or technical support, please refer to the documentation included with your purchase or visit the official NVX website. Contacting customer support with your product model (XC4N1) and purchase details will help expedite assistance. [Visit the NVX Store on Amazon](#) for more information and products.

## Related Documents - XC4N1

	<p><a href="#">NVX XC-Series Subwoofers User Manual and Specifications</a></p> <p>User manual for NVX XC-Series subwoofers, including detailed specifications, enclosure recommendations, and warranty information for models XCW121, XCW122, XCW151, and XCW152.</p>
	<p><a href="#">NVX XDSP28 Bluetooth Digital Signal Processor User Manual</a></p> <p>Comprehensive user manual for the NVX XDSP28 Bluetooth Digital Signal Processor, covering installation, control panel functions, audio processing, troubleshooting, and warranty information.</p>
	<p><a href="#">NVX VADM Series Owner's Manual</a></p> <p>Owner's manual for the NVX VADM series audio amplifier, detailing installation, connections, and safe operation.</p>
	<p><a href="#">NVX V-Series Premium Class-D Amplifiers User Manual</a></p> <p>Explore the NVX V-Series Premium Class-D Amplifiers with this detailed user manual. Learn about installation, features, specifications, and warranty for models like VAD10001v2, VAD8402v2, and VAD22008v2. Optimize your car audio system with NVX's high-performance amplifiers.</p>
	<p><a href="#">Crestron DM NVX AV-over-IP System Design Guide</a></p> <p>A comprehensive design guide for the Crestron DM NVX AV-over-IP system, detailing endpoint and network design, installation procedures, and case studies for digital video and audio distribution over Ethernet.</p>
	<p><a href="#">.AV Framework Software for Crestron Virtual Control: Operations Guide</a></p> <p>Operations Guide for Crestron's .AV Framework™ Software, detailing setup, configuration, and operation of enterprise room solutions with Crestron Virtual Control. Learn to deploy scalable AV systems without programming.</p>

