

AIRTHEREAL AGH550

Airthereal AGH550 HEPA Filter Air Purifier Instruction Manual

Model: AGH550 | Brand: AIRTHEREAL

1. INTRODUCTION

This manual provides detailed instructions for the safe and efficient operation, setup, and maintenance of your Airthereal AGH550 HEPA Filter Air Purifier. Please read this manual thoroughly before using the appliance and retain it for future reference.

2. SAFETY INFORMATION

Always follow basic safety precautions when using electrical appliances to reduce the risk of fire, electric shock, and injury.

- Do not operate the air purifier with a damaged cord or plug.
- Do not use the appliance in wet or damp environments.
- Keep the air inlet and outlet clear of obstructions.
- Unplug the air purifier before cleaning or performing any maintenance.
- This appliance is for indoor use only.

3. PRODUCT OVERVIEW

The Airthereal AGH550 is designed to improve indoor air quality by filtering out various airborne particles. It features an advanced filtration system and smart auto mode for efficient operation.





Figure 3.1: Front view of the Airthereal AGH550 Air Purifier in Cool Grey.

Key Features:

- **Powerful Performance:** Cleans and recirculates air in a 1085 sq.ft space every 30 minutes, or 450 sq.ft every 12 minutes.
- **Fantastic Filtration:** True HEPA filter removes 99.97% of airborne particles including dust, pollen, smoke, and pet dander.
- **Smart Auto Mode:** Laser sensor adjusts fan speed based on real-time air quality.
- **Low Noise Level:** Operates at a near-silent 22dB.
- **Energy Efficient:** Maximum power consumption of 40W.

Components and Airflow:



Figure 3.2: Internal components of the AGH550, highlighting its multi-layer design and air path for large rooms.



Figure 3.3: The AGH550 effectively circulates purified air throughout a room.



Figure 3.4: The upgraded laser dust sensor provides more sensitive and accurate air quality detection.

- Air Inlet Grille
- Multi-layer Filter System (Preliminary, True HEPA, Activated Carbon)
- Air Outlet
- Control Panel with Display
- Upgraded Laser Air Quality Sensor

4. SETUP

1. **Unpack the Unit:** Carefully remove the air purifier from its packaging.
2. **Remove Filter Packaging:** Before first use, open the filter compartment (usually at the bottom or back) and remove the plastic packaging from the filters. Reinsert the filters securely.
3. **Position the Purifier:** Place the air purifier on a flat, stable surface. Ensure there is at least 12 inches (30 cm) of clear space around all sides for optimal airflow.

4. **Connect to Power:** Plug the power cord into a standard electrical outlet.

5. OPERATING INSTRUCTIONS

Control Panel:



Figure 5.1: Detailed view of the simple touch-control panel.

- **Power On/Off Button:** Press to turn the unit on or off.
- **Fan Speed Setting:** Adjusts fan speed (e.g., Low, Medium, High).
- **Mode Switch (M):** Cycles through operating modes (e.g., Auto, Sleep, Manual).
- **Timer Button:** Sets the operating timer (0-24 hours).
- **Child-Proof Lock:** Activates/deactivates the control panel lock.
- **Air Quality Indicator:** Displays real-time air quality via color-coded LED.

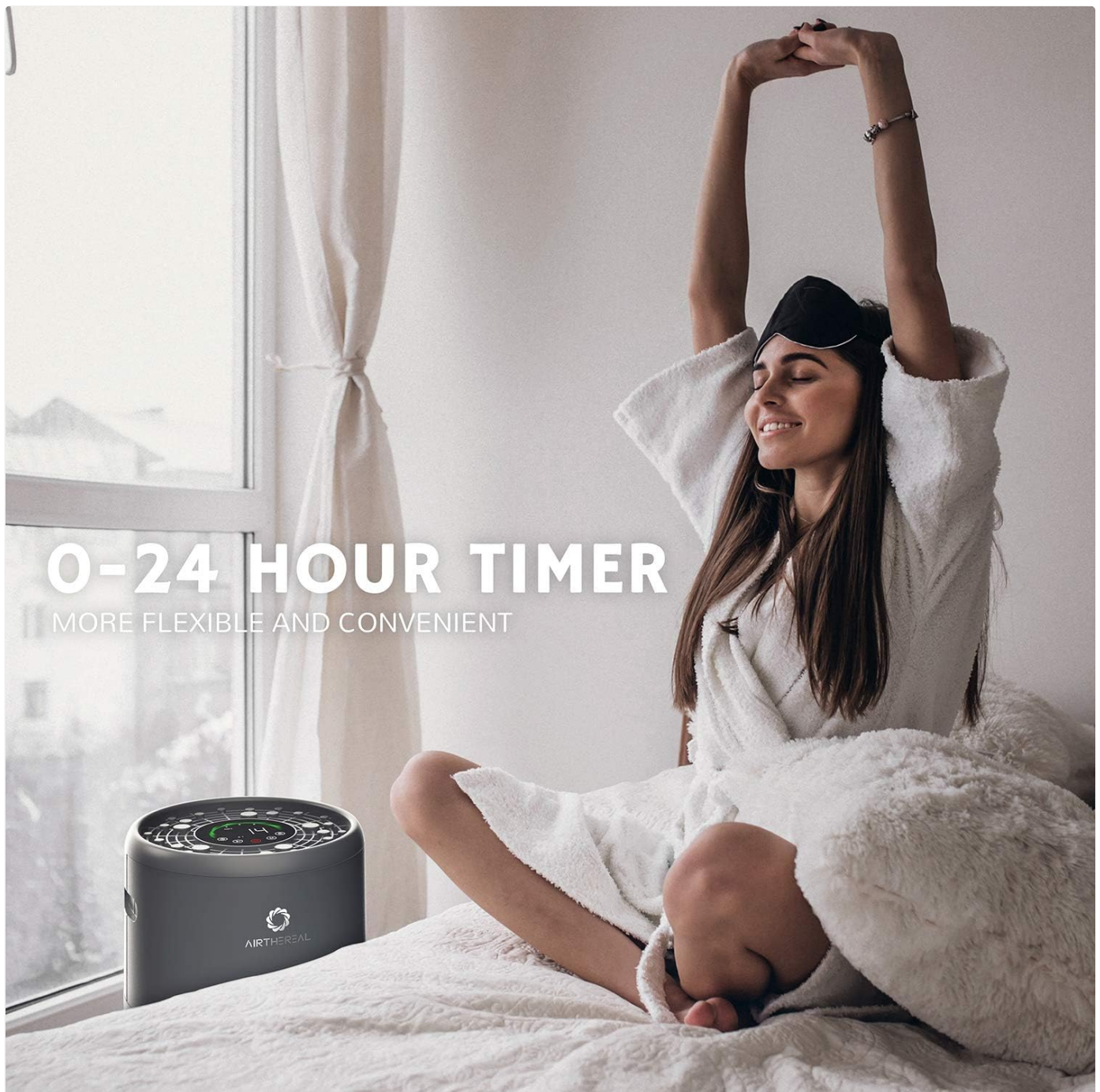


Figure 5.2: Air Quality Indicator showing PM2.5 readings and corresponding color codes.

Air Quality Indicator Guide:

PM2.5 Reading	Color	Air Quality
0-12	Green	Good
12-35	Orange	Moderate
35+	Red	Unhealthy

Using the Timer:



0-24 HOUR TIMER

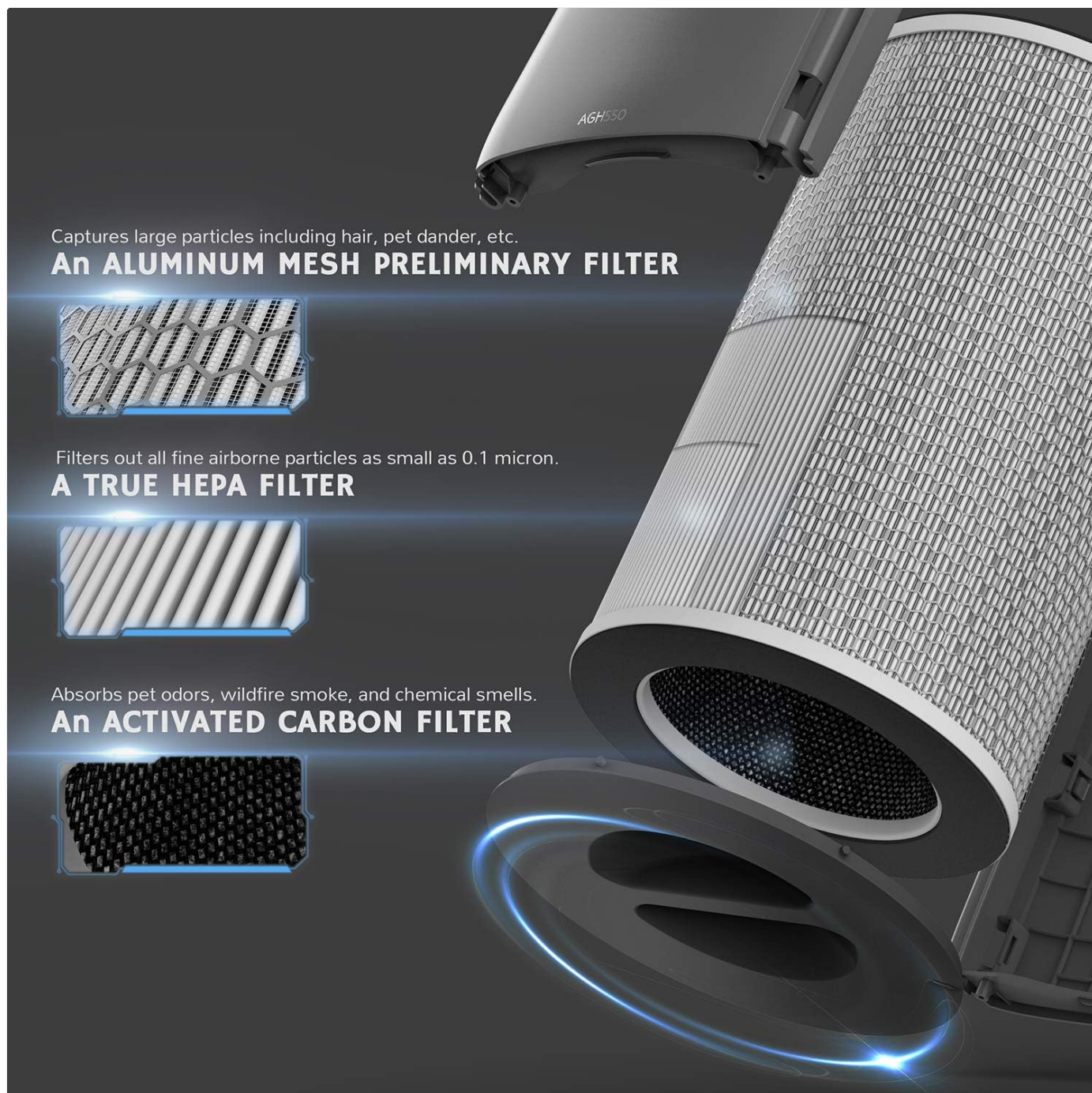
MORE FLEXIBLE AND CONVENIENT

Figure 5.3: The 0-24 hour timer provides flexible operation.

Press the timer button to set the desired operating duration. The unit will automatically turn off after the set time has elapsed.

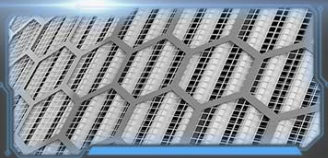
6. MAINTENANCE

Filter Replacement:



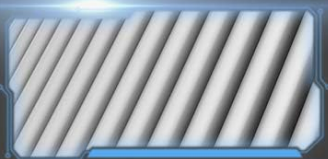
Captures large particles including hair, pet dander, etc.

An ALUMINUM MESH PRELIMINARY FILTER



Filters out all fine airborne particles as small as 0.1 micron.

A TRUE HEPA FILTER



Absorbs pet odors, wildfire smoke, and chemical smells.

An ACTIVATED CARBON FILTER



Figure 6.1: The multi-stage filter system includes an Aluminum Mesh Preliminary Filter, a True HEPA Filter, and an Activated Carbon Filter. The AGH550 uses a multi-layer filter system. The lifespan of the filters depends on air quality and usage. It is recommended to replace the filters every 6-8 months for optimal performance.

- **Replacement Filters:** Original replacement HEPA filter (B07X8HW1SN), H13 filter (B08N49PWY2).
- **To Replace Filters:**
 - a. Unplug the air purifier from the power outlet.
 - b. Locate the filter compartment (refer to product diagram).
 - c. Remove the old filters and dispose of them properly.
 - d. Insert new filters, ensuring they are correctly oriented.
 - e. Close the filter compartment cover securely.
 - f. Plug in the air purifier and reset the filter life indicator (if applicable, refer to control panel instructions).

Cleaning:

- **Exterior:** Wipe the exterior of the air purifier with a soft, dry cloth. Do not use abrasive cleaners or solvents.

- **Air Quality Sensor:** Periodically clean the air quality sensor lens (refer to product diagram for location, often near the air inlet) with a dry cotton swab to ensure accurate readings.
- **Pre-filter:** The preliminary filter can be gently vacuumed to remove large dust particles and pet dander. Do not wash the HEPA or Activated Carbon filters.

7. TROUBLESHOOTING

Problem	Possible Cause	Solution
Unit does not turn on.	Not plugged in; power outage; damaged cord/plug.	Ensure plug is securely in outlet; check circuit breaker; contact customer support if cord/plug is damaged.
Weak airflow.	Filters are dirty or clogged; air inlets/outlets blocked.	Replace filters; clear any obstructions from air inlets/outlets.
Unusual noise.	Filter not installed correctly; foreign object inside unit.	Reinstall filters correctly; unplug and check for foreign objects.
Air quality reading is inaccurate.	Air quality sensor is dirty.	Clean the air quality sensor lens with a dry cotton swab.

8. SPECIFICATIONS

Attribute	Detail
Model Number	AGH550
Brand	AIRTHEREAL
Product Dimensions	11.4"D x 11.4"W x 24.6"H
Item Weight	14.7 Pounds
Color	Cool Grey
Power Consumption	40 Watts (Maximum)
Noise Level	46 dB (Maximum)
Coverage Area	Up to 750 Square Feet
Filter Type	True HEPA, Activated Carbon, Preliminary Mesh
Date First Available	July 25, 2019





Figure 8.1: Product dimensions of the Airthereal AGH550.

9. WARRANTY AND SUPPORT

For warranty information and customer support, please refer to the official Airthereal website or contact their customer service directly. Keep your purchase receipt for warranty claims.

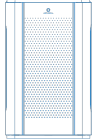
Manufacturer: Airthereal

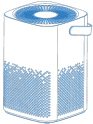
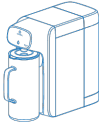
Website: www.airthereal.com



© 2024 AIRTHEREAL. All rights reserved.

Related Documents - AGH550

<div>USER MANUAL</div> <div><p>Airthereal Pure Morning APH260 HEPA Air Purifier</p></div>	<p>Airthereal Pure Morning APH260 HEPA Air Purifier User Manual</p> <p>Comprehensive user manual for the Airthereal Pure Morning APH260 HEPA Air Purifier. Covers components, specifications, safety instructions, installation, operation, maintenance, troubleshooting, and warranty.</p>
<div>USER MANUAL</div> <div><p>Airthereal Pure Morning APH230C HEPA AIR PURIFIER</p><p>READ AND SAVE THESE INSTRUCTIONS</p></div>	<p>Airthereal Pure Morning APH230C HEPA Air Purifier User Manual</p> <p>User manual for the Airthereal Pure Morning APH230C HEPA Air Purifier, covering components, specifications, safety instructions, operation, maintenance, troubleshooting, and warranty.</p>
<div>USER MANUAL</div> <div><p>Airthereal Day Dawning ADH50B HEPA Air Purifier</p></div>	<p>Airthereal ADH50B HEPA Air Purifier User Manual</p> <p>Comprehensive user manual for the Airthereal ADH50B HEPA Air Purifier, covering setup, operation, maintenance, troubleshooting, and warranty.</p>
<div>USER MANUAL</div> <div><p>Airthereal Pure Morning APH260 HEPA Air Purifier</p></div>	<p>Airthereal Pure Morning APH260 HEPA Air Purifier User Manual</p> <p>Comprehensive user manual for the Airthereal Pure Morning APH260 HEPA Air Purifier, covering components, specifications, safety instructions, installation, operation, maintenance, troubleshooting, and warranty.</p>

<div>USER MANUAL</div> <div><p>AIRTHEREAL Day Dawning ADH70 HEPA AIR PURIFIER</p></div>	<p>Airthereal Day Dawning ADH70 HEPA Air Purifier User Manual</p> <p>User manual for the Airthereal Day Dawning ADH70 HEPA Air Purifier. Provides detailed information on components, specifications, safety guidelines, installation, operation, maintenance, cleaning, troubleshooting, and warranty.</p>
<div>USER MANUAL</div> <div><p>AIRTHEREAL REVERSE OSMOSIS WATER PURIFIER Pristine - Lite3</p><p>Please read this user manual thoroughly before use and keep it for future reference.</p></div>	<p>Airthereal Pristine Lite3 Reverse Osmosis Water Purifier User Manual</p> <p>User manual for the Airthereal Pristine Lite3 Reverse Osmosis Water Purifier, covering safety instructions, specifications, components, getting started, maintenance, troubleshooting, and limited warranty.</p>

Documents - AIRTHEREAL – AGH550



[\[pdf\]](#) User Manual Instructions Troubleshooting Guide Specifications Warranty Manual Airthereal AGH550 Air Purifier Open Box User Manual 20210308 8M v 1615174138 cdn shopify s files 1 0006 0823 9674 |||

HEPA Air Purifier Glory Days **AGH550** USER MANUAL MANUAL DE USUARIO CONTENTS / CONTENIDO English COMPONENTS SPECIFICATIONS IMPORTANT SAFETY INSTRUCTIONS INSTALLATION INSTRUCTIONS CONTROLS OPERATION MAINTENANCE TROUBLESHOOTING WARRANTY Espaol PARTES ESPECIFICACIONES INSTRUCCIONES DE SEGURIDAD INSTRUC...

lang:en score:52 filesize: 8.59 M page_count: 28 document date: 2021-03-08



[\[pdf\]](#) User Manual Instructions Troubleshooting Guide Specifications Warranty HEPA Air Purifier cdn shopify 3 4 5 6 7 9 11 12 15 16 17 18 19 20 22 23 25 components specifi Airthereal AGH550 8 59MB 16268 s files 1 0006 0823 9674

HEPA Air Purifier Glory Days **AGH550** USER MANUAL MANUAL DE USUARIO CONTENTS / CONTENIDO English COMPONENTS SPECIFICATIONS IMPORTANT SAFETY INSTRUCTIONS INSTALLATION INSTRUCTIONS CONTROLS OPERATION MAINTENANCE TROUBLESHOOTING WARRANTY Espaol PARTES ESPECIFICACIONES INSTRUCCIONES DE SEGURIDAD INSTRUC...

lang:en score:38 filesize: 8.59 M page_count: 28 document date: 2020-02-12



[\[pdf\]](#) Specifications

AIRTHEREAL AGH550 ENERGY STAR Certified Air Purifiers Cleaners v2 0 certification information for Product ID 2358210 Specification Version 2 2021 12 18 energystar gov productfinder product certified room air cleaners details export |||

ENERGY STAR CERTIFIED Air Purifiers Cleaners AIRTHEREAL - **AGH550** :

AGH550 Specifications ENERGY STAR Unique ID: 2358210 Brand Name:

AIRTHEREAL Model Number: **AGH550** Model Name: **AGH550** Annual Energy Use kWh/year : 332.7676923 Partial On Mode Power Watts : 0.5 Room Size sq.ft. : 45...

lang:en score:38 filesize: 19.42 K page_count: 1 document date: 2021-12-18



[\[pdf\]](#) Specifications

AIRTHEREAL AGH550 ENERGY STAR Certified Air Purifiers Cleaners v2 0 certification information for Product ID 2358210 Specification Version 2 2021 12 17 energystar gov productfinder product certified room air cleaners details export |||

ENERGY STAR CERTIFIED Air Purifiers Cleaners AIRTHEREAL - **AGH550** :

AGH550 Specifications ENERGY STAR Unique ID: 2358210 Brand Name:

AIRTHEREAL Model Number: **AGH550** Model Name: **AGH550** Annual Energy Use kWh/year : 332.7676923 Partial On Mode Power Watts : 0.5 Room Size sq.ft. : 45...

lang:en score:38 filesize: 19.42 K page_count: 1 document date: 2021-12-17



[\[pdf\]](#) User Manual Instructions Troubleshooting Guide Specifications Warranty Catalog

b74bf86d c6e3 43ca a4aa 63fde0e748b8images homedepot static catalog Images b7 63fde0e748b8 |||

HEPA Air Purifier Glory Days **AGH550** USER MANUAL MANUAL DE USUARIO

CONTENTS / CONTENIDO English COMPONENTS SPECIFICATIONS

IMPORTANT SAFETY INSTRUCTIONS INSTALLATION INSTRUCTIONS

CONTROLS OPERATION MAINTENANCE TROUBLESHOOTING WARRANTY

Español PARTES ESPECIFICACIONES INSTRUCCIONES DE SEGURIDAD

INSTRUC...

lang:en score:26 filesize: 8.59 M page_count: 28 document date: 2020-02-12

NIPSCO Residential Energy Efficiency Rebate Program Qualified Product List			
Approved for the Rebate Program by NIPSCO			
2022			
Product ID	Brand Name	Manufacturer	Manufacturer's Model Number and Description and Efficiency Rating
202201	GE	GE	GE 1/2 HP, 120V, 1.0 EER
202202	GE	GE	GE 1/2 HP, 120V, 1.0 EER
202203	GE	GE	GE 1/2 HP, 120V, 1.0 EER
202204	GE	GE	GE 1/2 HP, 120V, 1.0 EER
202205	GE	GE	GE 1/2 HP, 120V, 1.0 EER
202206	GE	GE	GE 1/2 HP, 120V, 1.0 EER
202207	GE	GE	GE 1/2 HP, 120V, 1.0 EER
202208	GE	GE	GE 1/2 HP, 120V, 1.0 EER
202209	GE	GE	GE 1/2 HP, 120V, 1.0 EER
202210	GE	GE	GE 1/2 HP, 120V, 1.0 EER
202211	GE	GE	GE 1/2 HP, 120V, 1.0 EER
202212	GE	GE	GE 1/2 HP, 120V, 1.0 EER
202213	GE	GE	GE 1/2 HP, 120V, 1.0 EER
202214	GE	GE	GE 1/2 HP, 120V, 1.0 EER
202215	GE	GE	GE 1/2 HP, 120V, 1.0 EER
202216	GE	GE	GE 1/2 HP, 120V, 1.0 EER
202217	GE	GE	GE 1/2 HP, 120V, 1.0 EER
202218	GE	GE	GE 1/2 HP, 120V, 1.0 EER
202219	GE	GE	GE 1/2 HP, 120V, 1.0 EER
202220	GE	GE	GE 1/2 HP, 120V, 1.0 EER
202221	GE	GE	GE 1/2 HP, 120V, 1.0 EER
202222	GE	GE	GE 1/2 HP, 120V, 1.0 EER
202223	GE	GE	GE 1/2 HP, 120V, 1.0 EER
202224	GE	GE	GE 1/2 HP, 120V, 1.0 EER
202225	GE	GE	GE 1/2 HP, 120V, 1.0 EER
202226	GE	GE	GE 1/2 HP, 120V, 1.0 EER
202227	GE	GE	GE 1/2 HP, 120V, 1.0 EER
202228	GE	GE	GE 1/2 HP, 120V, 1.0 EER
202229	GE	GE	GE 1/2 HP, 120V, 1.0 EER
202230	GE	GE	GE 1/2 HP, 120V, 1.0 EER
202231	GE	GE	GE 1/2 HP, 120V, 1.0 EER
202232	GE	GE	GE 1/2 HP, 120V, 1.0 EER
202233	GE	GE	GE 1/2 HP, 120V, 1.0 EER
202234	GE	GE	GE 1/2 HP, 120V, 1.0 EER
202235	GE	GE	GE 1/2 HP, 120V, 1.0 EER
202236	GE	GE	GE 1/2 HP, 120V, 1.0 EER
202237	GE	GE	GE 1/2 HP, 120V, 1.0 EER
202238	GE	GE	GE 1/2 HP, 120V, 1.0 EER
202239	GE	GE	GE 1/2 HP, 120V, 1.0 EER
202240	GE	GE	GE 1/2 HP, 120V, 1.0 EER
202241	GE	GE	GE 1/2 HP, 120V, 1.0 EER
202242	GE	GE	GE 1/2 HP, 120V, 1.0 EER
202243	GE	GE	GE 1/2 HP, 120V, 1.0 EER
202244	GE	GE	GE 1/2 HP, 120V, 1.0 EER
202245	GE	GE	GE 1/2 HP, 120V, 1.0 EER
202246	GE	GE	GE 1/2 HP, 120V, 1.0 EER
202247	GE	GE	GE 1/2 HP, 120V, 1.0 EER
202248	GE	GE	GE 1/2 HP, 120V, 1.0 EER
202249	GE	GE	GE 1/2 HP, 120V, 1.0 EER
202250	GE	GE	GE 1/2 HP, 120V, 1.0 EER
202251	GE	GE	GE 1/2 HP, 120V, 1.0 EER
202252	GE	GE	GE 1/2 HP, 120V, 1.0 EER
202253	GE	GE	GE 1/2 HP, 120V, 1.0 EER
202254	GE	GE	GE 1/2 HP, 120V, 1.0 EER
202255	GE	GE	GE 1/2 HP, 120V, 1.0 EER
202256	GE	GE	GE 1/2 HP, 120V, 1.0 EER
202257	GE	GE	GE 1/2 HP, 120V, 1.0 EER
202258	GE	GE	GE 1/2 HP, 120V, 1.0 EER
202259	GE	GE	GE 1/2 HP, 120V, 1.0 EER
202260	GE	GE	GE 1/2 HP, 120V, 1.0 EER
202261	GE	GE	GE 1/2 HP, 120V, 1.0 EER
202262	GE	GE	GE 1/2 HP, 120V, 1.0 EER
202263	GE	GE	GE 1/2 HP, 120V, 1.0 EER
202264	GE	GE	GE 1/2 HP, 120V, 1.0 EER
202265	GE	GE	GE 1/2 HP, 120V, 1.0 EER
202266	GE	GE	GE 1/2 HP, 120V, 1.0 EER
202267	GE	GE	GE 1/2 HP, 120V, 1.0 EER
202268	GE	GE	GE 1/2 HP, 120V, 1.0 EER
202269	GE	GE	GE 1/2 HP, 120V, 1.0 EER
202270	GE	GE	GE 1/2 HP, 120V, 1.0 EER
202271	GE	GE	GE 1/2 HP, 120V, 1.0 EER
202272	GE	GE	GE 1/2 HP, 120V, 1.0 EER

ENERGY STAR Room Air Purifiers 2021 01 04 Anna Ruck energy star room air purifiers columbiagasohio
docs librariesprovider11 efficiency available rebates sfvrsn 2 |||


Filtrete Filtrete Model Number AG900 AGH500S **AGH550** AV980 Breathesmart 45i
Breathesmart 75i Flex T500 120539** BAP9921 BAPT01 405 505 605 3231101...

lang:en score:21 filesize: 172.16 K page_count: 3 document date: 2021-01-19

[illegible]

A comprehensive list of ENERGY STAR certified residential air purifiers, including brand names, model numbers, room size coverage, Clean Air Delivery Rate (CADR), and qualification dates. Find the right air purifier for your home.

lang:pt score:20 filesize: 102.33 K page_count: 6 document date: 2021-09-07

	ROCKY MOUNTAIN POWER	
Customer: Rocky Mountain Electric		
Account # 00000000000000000000		
112 3-phase service, 120/240V single phase		
Load Factor: 60.00% (12000/20000)		
01 000000 000000 00	Month	12/20
01 000000 000000 00	Year	2016
01 000000 000000 00	Day	15
01 000000 000000 00	Hour	12:00
01 000000 000000 00	Minute	00
01 000000 000000 00	Second	00
01 000000 000000 00	Millisecond	00
01 000000 000000 00	Nanosecond	00
01 000000 000000 00	Picosecond	00
01 000000 000000 00	Femtosecond	00
01 000000 000000 00	Attosecond	00
01 000000 000000 00	Zeptosecond	00
01 000000 000000 00	Yoctosecond	00
01 000000 000000 00	Planck time	00
01 000000 000000 00	Age of the universe	00
01 000000 000000 00	Life expectancy	00
01 000000 000000 00	Half-life of C-14	00
01 000000 000000 00	Half-life of U-238	00
01 000000 000000 00	Half-life of U-235	00
01 000000 000000 00	Half-life of Pu-239	00
01 000000 000000 00	Half-life of Po-210	00
01 000000 000000 00	Half-life of Ra-226	00
01 000000 000000 00	Half-life of Th-232	00
01 000000 000000 00	Half-life of U-235	00
01 000000 000000 00	Half-life of U-238	00
01 000000 000000 00	Half-life of Pu-239	00
01 000000 000000 00	Half-life of Po-210	00
01 000000 000000 00	Half-life of Ra-226	00
01 000000 000000 00	Half-life of Th-232	00
01 000000 000000 00	Half-life of U-235	00
01 000000 000000 00	Half-life of U-238	00
01 000000 000000 00	Half-life of Pu-239	00
01 000000 000000 00	Half-life of Po-210	00
01 000000 000000 00	Half-life of Ra-226	00
01 000000 000000 00	Half-life of Th-232	00
01 000000 000000 00	Half-life of U-235	00
01 000000 000000 00	Half-life of U-238	00
01 000000 000000 00	Half-life of Pu-239	00
01 000000 000000 00	Half-life of Po-210	00
01 000000 000000 00	Half-life of Ra-226	00
01 000000 000000 00	Half-life of Th-232	00
01 000000 000000 00	Half-life of U-235	00
01 000000 000000 00	Half-life of U-238	00
01 000000 000000 00	Half-life of Pu-239	00
01 000000 000000 00	Half-life of Po-210	00
01 000000 000000 00	Half-life of Ra-226	00
01 000000 000000 00	Half-life of Th-232	00
01 000000 000000 00	Half-life of U-235	00
01 000000 000000 00	Half-life of U-238	00
01 000000 000000 00	Half-life of Pu-239	00
01 000000 000000 00	Half-life of Po-210	00
01 000000 000000 00	Half-life of Ra-226	00
01 000000 000000 00	Half-life of Th-232	00
01 000000 000000 00	Half-life of U-235	00
01 000000 000000 00	Half-life of U-238	00
01 000000 000000 00	Half-life of Pu-239	00
01 000000 000000 00	Half-life of Po-210	00
01 000000 000000 00	Half-life of Ra-226	00
01 000000 000000 00	Half-life of Th-232	00
01 000000 000000 00	Half-life of U-235	00
01 000000 000000 00	Half-life of U-238	00
01 000000 000000 00	Half-life of Pu-239	00
01 000000 000000 00	Half-life of Po-210	00
01 000000 000000 00	Half-life of Ra-226	00
01 000000 000000 00	Half-life of Th-232	00
01 000000 000000 00	Half-life of U-235	00
01 000000 000000 00	Half-life of U-238	00
01 000000 000000 00	Half-life of Pu-239	00
01 000000 000000 00	Half-life of Po-210	00
01 000000 000000 00	Half-life of Ra-226	00
01 000000 000000 00	Half-life of Th-232	00
01 000000 000000 00	Half-life of U-235	00
01 000000 000000 00	Half-life of U-238	00
01 000000 000000 00	Half-life of Pu-239	00
01 000000 000000 00	Half-life of Po-210	00
01 000000 000000 00	Half-life of Ra-226	00
01 000000 000000 00	Half-life of Th-232	00
01 000000 000000 00	Half-life of U-235	00
01 000000 000000 00	Half-life of U-238	00
01 000000 000000 00	Half-life of Pu-239	00
01 000000 000000 00	Half-life of Po-210	00
01 000000 000000 00	Half-life of Ra-226	00
01 000000 000000 00	Half-life of Th-232	00
01 000000 000000 00	Half-life of U-235	00
01 000000 000000 00	Half-life of U-238	00
01 000000 000000 00	Half-life of Pu-239	00
01 000000 000000 00	Half-life of Po-210	00
01 000000 000000 00	Half-life of Ra-226	00
01 000000 000000 00	Half-life of Th-232	00
01 000000 000000 00	Half-life of U-235	00
01 000000 000000 00	Half-life of U-238	00
01 000000 000000 00	Half-life of Pu-239	00
01 000000 000000 00	Half-life of Po-210	00
01 000000 000000 00	Half-life of Ra-226	00
01 000000 000000 00	Half-life of Th-232	00
01 000000 000000 00	Half-life of U-235	00
01 000000 000000 00	Half-life of U-238	00
01 000000 000000 00	Half-life of Pu-239	00
01 000000 000000 00	Half-life of Po-210	00
01 000000 000000 00	Half-life of Ra-226	00
01 000000 000000 00	Half-life of Th-232	00
01 000000 000000 00	Half-life of U-235	00
01 000000 000000 00	Half-life of U-238	00
01 000000 000000 00	Half-life of Pu-239	00
01 000000 000000 00	Half-life of Po-210	00
01 000000 000000 00	Half-life of Ra-226	00
01 000000 000000 00	Half-life of Th-232	00
01 000000 000000 00	Half-life of U-235	00
01 000000 000000 00	Half-life of U-238	00
01 000000 000000 00	Half-life of Pu-239	00
01 000000 000000 00	Half-life of Po-210	00
01 000000 000000 00	Half-life of Ra-226	00
01 000000 000000 00	Half-life of Th-232	00
01 000000 000000 00	Half-life of U-235	00
01 000000 000000 00	Half-life of U-238	00
01 000000 000000 00	Half-life of Pu-239	00
01 000000 000000 00	Half-life of Po-210	00
01 000000 000000 00	Half-life of Ra-226	00
01 000000 000000 00	Half-life of Th-232	00
01 000000 000000 00	Half-life of U-235	00
01 000000 000000 00	Half-life of U-238	00
01 000000 000000 00	Half-life of Pu-239	00
01 000000 000000 00	Half-life of Po-210	00
01 000000 000000 00	Half-life of Ra-226	00
01 000000 000000 00	Half-life of Th-232	00
01 000000 000000 00	Half-life of U-235	00
01 000000 000000 00	Half-life of U-238	00
01 000000 000000 00	Half-life of Pu-239	00
01 000000 000000 00	Half-life of Po-210	00
01 000000 000000 00	Half-life of Ra-226	00
01 000000 000000 00	Half-life of Th-232	00
01 000000 000000 00	Half-life of U-235	00
01 000000 000000 00	Half-life of U-238	00
01 000000 000000 00	Half-life of Pu-239	00
01 000000 000000 00	Half-life of Po-210	00
01 000000 000000 00	Half-life of Ra-226	00
01 000000 000000 00	Half-life of Th-232	00
01 000000 000000 00	Half-life of U-235	00
01 000000 000000 00	Half-life of U-238	00
01 000000 000000 00	Half-life of Pu-239	00
01 000000 000000 00	Half-life of Po-210	00
01 000000 000000 00	Half-life of Ra-226	00
01 000000 000000 00	Half-life of Th-232	00
01 000000 000000 00	Half-life of U-235	00
01 000000 000000 00	Half-life of U-238	00
01 000000 000000 00	Half-life of Pu-239	00
01 000000 000000 00	Half-life of Po-210	00
01 000000 000000 00	Half-life of Ra-226	00
01 000000 000000 00	Half-life of Th-232	00
01 000000 000000 00	Half-life of U-235	00
01 000000 000000 00	Half-life of U-238	00
01 000000 000000 00	Half-life of Pu-239	00
01 000000 000000 00	Half-life of Po-210	00
01 000000 000000 00	Half-life of Ra-226	00
01 000000 000000 00	Half-life of Th-232	00
01 000000 000000 00	Half-life of U-235	00
01 000000 000000 00	Half-life of U-238	00
01 000000 000000 00	Half-life of Pu-239	00
01 000000 000000 00	Half-life of Po-210	00
01 000000 000000 00	Half-life of Ra-226	00
01 000000 000000 00	Half-life of Th-232	00
01 000000 000000 00	Half-life of U-235	00
01 000000 000000 00	Half-life of U-238	00
01 000000 000000 00	Half-life of Pu-239	00
01 000000 000000 00	Half-life of Po-210	00
01 000000 000000 00	Half-life of Ra-226	00
01 000000 000000 00	Half-life of Th-232	00
01 000000 000000 00	Half-life of U-235	00
01 000000 000000 00	Half-life of U-238	00
01 000000 000000 00	Half-life of Pu-239	00
01 000000 000000 00	Half-life of Po-210	00
01 000000 000000 00	Half-life of Ra-226	00
01 000000 000000 00	Half-life of Th-232	00
01 000000 000000 00	Half-life of U-235	00
01 000000 000000 00	Half-life of U-238	00
01 000000 000000 00	Half-life of Pu-239	00
01 000000 000000 00	Half-life of Po-210	00
01 000000 000000 00	Half-life of Ra-226	00
01 000000 000000 00	Half-life of Th-232	00
01 000000 000000 00	Half-life of U-235	00
01 000000 000000 00	Half-life of U-238	00
01 000000 000000 00	Half-life of Pu-239	00
01 000000 000000 00	Half-life of Po-210	00
01 000000 000000 00	Half-life of Ra-226	00
01 000000 000000 00	Half-life of Th-232	00
01 000000 000000 00	Half-life of U-235	00
01 000000 000000 00	Half-life of U-238	00
01 000000 000000 00	Half-life of Pu-239	00
01 000000 000000 00	Half-life of Po-210	00
01 000000 000000 00	Half-life of Ra-226	00
01 000000 000000 00	Half-life of Th-232	00
01 000000 000000 00	Half-life of U-235	00
01 000000 000000 00	Half-life of U-238	00
01 000000 000000 00	Half-life of Pu-239	00
01 000000 000000 00	Half-life of Po-210	00
01 000000 000000 00	Half-life of Ra-226	00
01 000000 000000 00	Half-life of Th-232	00
01 000000 000000 00	Half-life of U-235	00
01 000000 000000 00	Half-life of U-238	00
01 000000 000000 00	Half-life of Pu-239	00
01 000000 000000 00	Half-life of Po-210	00
01 000000 000000 00	Half-life of Ra-226	00
01 000000 000000 00	Half-life of Th-232	00
01 000000 000000 00	Half-life of U-235	00
01 000000 000000 00	Half-life of U-238	00
01 000000 000000 00	Half-life of Pu-239	00
01 000000 000000 00	Half-life of Po-210	00
01 000000 000000 00	Half-life of Ra-226	00
01 000000 000000 00	Half-life of Th-232	00
01 000000 000000 00	Half-life of U-235	00
01 000000 000000 00	Half-life of U-238	00
01 000000 000000 00	Half-life of Pu-239	00
01 000000 000000 00	Half-life of Po-210	00
01 000000 000000 00	Half-life of Ra-226	00
01 000000 000000 00	Half-life of Th-232	00
01 000000 000000 00	Half-life of U-235	00
01 000000 000000 00	Half-life of U-238	00
01 000000 000000 00	Half-life of Pu-239	00
01 000000 000000 00	Half-life of Po-210	00
01 000000 000000 00	Half-life of Ra-226	00
01 000000 000000 00	Half-life of Th-232	00
01 000000 000000 00	Half-life of U-235	00
01 000000 000000 00	Half-life of U-238	00
01 000000 000000 00	Half-life of Pu-239	00
01 000000 000000 00	Half-life of Po-210	00
01 000000 000000 00	Half-life of Ra-226	00
01 000000 000000 00	Half-life of Th-232	00
01 000000 000000 00	Half-life of U-235	00
01 000000 000000 00	Half-life of U-238	00
01 000000 000000 00	Half-life of Pu-239	00
01 000000 000000 00	Half-life of Po-210	00
01 000000 000000 00	Half-life of Ra-226	00
01 000000 000000 00	Half-life of Th-232	00
01 000000 000000 00	Half-life of U-235	00
01 000000 000000 00	Half-life of U-238	00
01 000000 000000 00	Half-life of Pu-239	00
01 000000 000000 00	Half-life of Po-210	00
01 000000 000000 00	Half-life of Ra-226	00
01 000000 000000 00	Half-life of Th-232	00
01 000000 000000 00	Half-life of U-235	00
01 000000 000000 00	Half-life of U-238	00
01 000000 000000 00	Half-life of Pu-239	00
01 000000 000000 00	Half-life of Po-210	00
01 000000 000000 00	Half-life of Ra-226	00
01 000000 000000 00	Half-life of Th-232	00
0		

A comprehensive list of qualified room air cleaner models from various brands, eligible for incentives from Rocky Mountain Power, with a minimum CADR of 30. The list is updated monthly.

lang:it score:17 filesize: 172.17 K page_count: 5 document date: 2021-12-21

NIPSCO Residential Energy Efficiency Rebate Program
Qualified Product List
v. 2022

NIPSCO
NORTHERN INDIANA
PUBLIC SERVICE COMPANY

ENERGY STAR Version D	Brand Name	Model Number	Additional Information	Day-Tone Cool A/T	Single-Tone Delivery Rate (BTU)	Single-Tone Energy Star Cool A/T	Pilot-Tone Cool A/T	Pilot-Tone Delivery Rate (BTU)
238370	Thermap	TP150	APAC-CH150-160 APAC-CH150-160s No operational switch other than the model number	39	31			32
238348	LEVOT	LEV-CH161402	LEV-CH161402 LEV-CH161402-1 LEV-CH161402-2 LEV-CH161402-3 LEV-CH161402-4 LEV-CH161402-5 LEV-CH161402-6 LEV-CH161402-7 LEV-CH161402-8 LEV-CH161402-9 LEV-CH161402-10 LEV-CH161402-11 LEV-CH161402-12 LEV-CH161402-13 LEV-CH161402-14 LEV-CH161402-15 LEV-CH161402-16 LEV-CH161402-17 LEV-CH161402-18 LEV-CH161402-19 LEV-CH161402-20 LEV-CH161402-21 LEV-CH161402-22 LEV-CH161402-23 LEV-CH161402-24 LEV-CH161402-25 LEV-CH161402-26 LEV-CH161402-27 LEV-CH161402-28 LEV-CH161402-29 LEV-CH161402-30 LEV-CH161402-31 LEV-CH161402-32 LEV-CH161402-33 LEV-CH161402-34 LEV-CH161402-35 LEV-CH161402-36 LEV-CH161402-37 LEV-CH161402-38 LEV-CH161402-39 LEV-CH161402-40 LEV-CH161402-41 LEV-CH161402-42 LEV-CH161402-43 LEV-CH161402-44 LEV-CH161402-45 LEV-CH161402-46 LEV-CH161402-47 LEV-CH161402-48 LEV-CH161402-49 LEV-CH161402-50 LEV-CH161402-51 LEV-CH161402-52 LEV-CH161402-53 LEV-CH161402-54 LEV-CH161402-55 LEV-CH161402-56 LEV-CH161402-57 LEV-CH161402-58 LEV-CH161402-59 LEV-CH161402-60 LEV-CH161402-61 LEV-CH161402-62 LEV-CH161402-63 LEV-CH161402-64 LEV-CH161402-65 LEV-CH161402-66 LEV-CH161402-67 LEV-CH161402-68 LEV-CH161402-69 LEV-CH161402-70 LEV-CH161402-71 LEV-CH161402-72 LEV-CH161402-73 LEV-CH161402-74 LEV-CH161402-75 LEV-CH161402-76 LEV-CH161402-77 LEV-CH161402-78 LEV-CH161402-79 LEV-CH161402-80 LEV-CH161402-81 LEV-CH161402-82 LEV-CH161402-83 LEV-CH161402-84 LEV-CH161402-85 LEV-CH161402-86 LEV-CH161402-87 LEV-CH161402-88 LEV-CH161402-89 LEV-CH161402-90 LEV-CH161402-91 LEV-CH161402-92 LEV-CH161402-93 LEV-CH161402-94 LEV-CH161402-95 LEV-CH161402-96 LEV-CH161402-97 LEV-CH161402-98 LEV-CH161402-99 LEV-CH161402-100 LEV-CH161402-101 LEV-CH161402-102 LEV-CH161402-103 LEV-CH161402-104 LEV-CH161402-105 LEV-CH161402-106 LEV-CH161402-107 LEV-CH161402-108 LEV-CH161402-109 LEV-CH161402-110 LEV-CH161402-111 LEV-CH161402-112 LEV-CH161402-113 LEV-CH161402-114 LEV-CH161402-115 LEV-CH161402-116 LEV-CH161402-117 LEV-CH161402-118 LEV-CH161402-119 LEV-CH161402-120 LEV-CH161402-121 LEV-CH161402-122 LEV-CH161402-123 LEV-CH161402-124 LEV-CH161402-125 LEV-CH161402-126 LEV-CH161402-127 LEV-CH161402-128 LEV-CH161402-129 LEV-CH161402-130 LEV-CH161402-131 LEV-CH161402-132 LEV-CH161402-133 LEV-CH161402-134 LEV-CH161402-135 LEV-CH161402-136 LEV-CH161402-137 LEV-CH161402-138 LEV-CH161402-139 LEV-CH161402-140 LEV-CH161402-141 LEV-CH161402-142 LEV-CH161402-143 LEV-CH161402-144 LEV-CH161402-145 LEV-CH161402-146 LEV-CH161402-147 LEV-CH161402-148 LEV-CH161402-149 LEV-CH161402-150 LEV-CH161402-151 LEV-CH161402-152 LEV-CH161402-153 LEV-CH161402-154 LEV-CH161402-155 LEV-CH161402-156 LEV-CH161402-157 LEV-CH161402-158 LEV-CH161402-159 LEV-CH161402-160 LEV-CH161402-161 LEV-CH161402-162 LEV-CH161402-163 LEV-CH161402-164 LEV-CH161402-165 LEV-CH161402-166 LEV-CH161402-167 LEV-CH161402-168 LEV-CH161402-169 LEV-CH161402-170 LEV-CH161402-171 LEV-CH161402-172 LEV-CH161402-173 LEV-CH161402-174 LEV-CH161402-175 LEV-CH161402-176 LEV-CH161402-177 LEV-CH161402-178 LEV-CH161402-179 LEV-CH161402-180 LEV-CH161402-181 LEV-CH161402-182 LEV-CH161402-183 LEV-CH161402-184 LEV-CH161402-185 LEV-CH161402-186 LEV-CH161402-187 LEV-CH161402-188 LEV-CH161402-189 LEV-CH161402-190 LEV-CH161402-191 LEV-CH161402-192 LEV-CH161402-193 LEV-CH161402-194 LEV-CH161402-195 LEV-CH161402-196 LEV-CH161402-197 LEV-CH161402-198 LEV-CH161402-199 LEV-CH161402-200 LEV-CH161402-201 LEV-CH161402-202 LEV-CH161402-203 LEV-CH161402-204 LEV-CH161402-205 LEV-CH161402-206 LEV-CH161402-207 LEV-CH161402-208 LEV-CH161402-209 LEV-CH161402-210 LEV-CH161402-211 LEV-CH161402-212 LEV-CH161402-213 LEV-CH161402-214 LEV-CH161402-215 LEV-CH161402-216 LEV-CH161402-217 LEV-CH161402-218 LEV-CH161402-219 LEV-CH161402-220 LEV-CH161402-221 LEV-CH161402-222 LEV-CH161402-223 LEV-CH161402-224 LEV-CH161402-225 LEV-CH161402-226 LEV-CH161402-227 LEV-CH161402-228 LEV-CH161402-229 LEV-CH161402-230 LEV-CH161402-231 LEV-CH161402-232 LEV-CH161402-233 LEV-CH161402-234 LEV-CH161402-235 LEV-CH161402-236 LEV-CH161402-237 LEV-CH161402-238 LEV-CH161402-239 LEV-CH161402-240 LEV-CH161402-241 LEV-CH161402-242 LEV-CH161402-243 LEV-CH161402-244 LEV-CH161402-245 LEV-CH161402-246 LEV-CH161402-247 LEV-CH161402-248 LEV-CH161402-249 LEV-CH161402-250 LEV-CH161402-251 LEV-CH161402-252 LEV-CH	45	34	32		
238347	LEVOT	LEV-CH161402	LEV-CH161402 LEV-CH161402-1 LEV-CH161402-2 LEV-CH161402-3 LEV-CH161402-4 LEV-CH161402-5 LEV-CH161402-6 LEV-CH161402-7 LEV-CH161402-8 LEV-CH161402-9 LEV-CH161402-10 LEV-CH161402-11 LEV-CH161402-12 LEV-CH161402-13 LEV-CH161402-14 LEV-CH161402-15 LEV-CH161402-16 LEV-CH161402-17 LEV-CH161402-18 LEV-CH161402-19 LEV-CH161402-20 LEV-CH161402-21 LEV-CH161402-22 LEV-CH161402-23 LEV-CH161402-24 LEV-CH161402-25 LEV-CH161402-26 LEV-CH161402-27 LEV-CH161402-28 LEV-CH161402-29 LEV-CH161402-30 LEV-CH161402-31 LEV-CH161402-32 LEV-CH161402-33 LEV-CH161402-34 LEV-CH161402-35 LEV-CH161402-36 LEV-CH161402-37 LEV-CH161402-38 LEV-CH161402-39 LEV-CH161402-40 LEV-CH161402-41 LEV-CH161402-42 LEV-CH161402-43 LEV-CH161402-44 LEV-CH161402-45 LEV-CH161402-46 LEV-CH161402-47 LEV-CH161402-48 LEV-CH161402-49 LEV-CH161402-50 LEV-CH161402-51 LEV-CH161402-52 LEV-CH161402-53 LEV-CH161402-54 LEV-CH161402-55 LEV-CH161402-56 LEV-CH161402-57 LEV-CH161402-58 LEV-CH161402-59 LEV-CH161402-60 LEV-CH161402-61 LEV-CH161402-62 LEV-CH161402-63 LEV-CH161402-64 LEV-CH161402-65 LEV-CH161402-66 LEV-CH161402-67 LEV-CH161402-68 LEV-CH161402-69 LEV-CH161402-70 LEV-CH161402-71 LEV-CH161402-72 LEV-CH161402-73 LEV-CH161402-74 LEV-CH161402-75 LEV-CH161402-76 LEV-CH161402-77 LEV-CH161402-78 LEV-CH161402-79 LEV-CH161402-80 LEV-CH161402-81 LEV-CH161402-82 LEV-CH161402-83 LEV-CH161402-84 LEV-CH161402-85 LEV-CH161402-86 LEV-CH161402-87 LEV-CH161402-88 LEV-CH161402-89 LEV-CH161402-90 LEV-CH161402-91 LEV-CH161402-92 LEV-CH161402-93 LEV-CH161402-94 LEV-CH161402-95 LEV-CH161402-96 LEV-CH161402-97 LEV-CH161402-98 LEV-CH161402-99 LEV-CH161402-100 LEV-CH161402-101 LEV-CH161402-102 LEV-CH161402-103 LEV-CH161402-104 LEV-CH161402-105 LEV-CH161402-106 LEV-CH161402-107 LEV-CH161402-108 LEV-CH161402-109 LEV-CH161402-110 LEV-CH161402-111 LEV-CH161402-112 LEV-CH161402-113 LEV-CH161402-114 LEV-CH161402-115 LEV-CH161402-116 LEV-CH161402-117 LEV-CH161402-118 LEV-CH161402-119 LEV-CH161402-120 LEV-CH161402-121 LEV-CH161402-122 LEV-CH161402-123 LEV-CH161402-124 LEV-CH161402-125 LEV-CH161402-126 LEV-CH161402-127 LEV-CH161402-128 LEV-CH161402-129 LEV-CH161402-130 LEV-CH161402-131 LEV-CH161402-132 LEV-CH161402-133 LEV-CH161402-134 LEV-CH161402-135 LEV-CH161402-136 LEV-CH161402-137 LEV-CH161402-138 LEV-CH161402-139 LEV-CH161402-140 LEV-CH161402-141 LEV-CH161402-142 LEV-CH161402-143 LEV-CH161402-144 LEV-CH161402-145 LEV-CH161402-146 LEV-CH161402-147 LEV-CH161402-148 LEV-CH161402-149 LEV-CH161402-150 LEV-CH161402-151 LEV-CH161402-152 LEV-CH161402-153 LEV-CH161402-154 LEV-CH161402-155 LEV-CH161402-156 LEV-CH161402-157 LEV-CH161402-158 LEV-CH161402-159 LEV-CH161402-160 LEV-CH161402-161 LEV-CH161402-162 LEV-CH161402-163 LEV-CH161402-164 LEV-CH161402-165 LEV-CH161402-166 LEV-CH161402-167 LEV-CH161402-168 LEV-CH161402-169 LEV-CH161402-170 LEV-CH161402-171 LEV-CH161402-172 LEV-CH161402-173 LEV-CH161402-174 LEV-CH161402-175 LEV-CH161402-176 LEV-CH161402-177 LEV-CH161402-178 LEV-CH161402-179 LEV-CH161402-180 LEV-CH161402-181 LEV-CH161402-182 LEV-CH161402-183 LEV-CH161402-184 LEV-CH161402-185 LEV-CH161402-186 LEV-CH161402-187 LEV-CH161402-188 LEV-CH161402-189 LEV-CH161402-190 LEV-CH161402-191 LEV-CH161402-192 LEV-CH161402-193 LEV-CH161402-194 LEV-CH161402-195 LEV-CH161402-196 LEV-CH161402-197 LEV-CH161402-198 LEV-CH161402-199 LEV-CH161402-200 LEV-CH161402-201 LEV-CH161402-202 LEV-CH161402-203 LEV-CH161402-204 LEV-CH161402-205 LEV-CH161402-206 LEV-CH161402-207 LEV-CH161402-208 LEV-CH161402-209 LEV-CH161402-210 LEV-CH161402-211 LEV-CH161402-212 LEV-CH161402-213 LEV-CH161402-214 LEV-CH161402-215 LEV-CH161402-216 LEV-CH161402-217 LEV-CH161402-218 LEV-CH161402-219 LEV-CH161402-220 LEV-CH161402-221 LEV-CH161402-222 LEV-CH161402-223 LEV-CH161402-224 LEV-CH161402-225 LEV-CH161402-226 LEV-CH161402-227 LEV-CH161402-228 LEV-CH161402-229 LEV-CH161402-230 LEV-CH161402-231 LEV-CH161402-232 LEV-CH161402-233 LEV-CH161402-234 LEV-CH161402-235 LEV-CH161402-236 LEV-CH161402-237 LEV-CH161402-238 LEV-CH161402-239 LEV-CH161402-240 LEV-CH161402-241 LEV-CH161402-242 LEV-CH161402-243 LEV-CH161402-244 LEV-CH161402-245 LEV-CH161402-246 LEV-CH161402-247 LEV-CH161402-248 LEV-CH161402-249 LEV-CH161402-250 LEV-CH161402-251 LEV-CH161402-252 LEV-CH	45	34	32		
238061	HEPAC	HPH800	HPH800 HPH800-1 HPH800-2 HPH800-3 HPH800-4 HPH800-5 HPH800-6 HPH800-7 HPH800-8 HPH800-9 HPH800-10 HPH800-11 HPH800-12 HPH800-13 HPH800-14 HPH800-15 HPH800-16 HPH800-17 HPH800-18 HPH800-19 HPH800-20 HPH800-21 HPH800-22 HPH800-23 HPH800-24 HPH800-25 HPH800-26 HPH800-27 HPH800-28 HPH800-29 HPH800-30 HPH800-31 HPH800-32 HPH800-33 HPH800-34 HPH800-35 HPH800-36 HPH800-37 HPH800-38 HPH800-39 HPH800-40 HPH800-41 HPH800-42 HPH800-43 HPH800-44 HPH800-45 HPH800-46 HPH800-47 HPH800-48 HPH800-49 HPH800-50 HPH800-51 HPH800-52 HPH800-53 HPH800-54 HPH800-55 HPH800-56 HPH800-57 HPH800-58 HPH800-59 HPH800-60 HPH800-61 HPH800-62 HPH800-63 HPH800-64 HPH800-65 HPH800-66 HPH800-67 HPH800-68 HPH800-69 HPH800-70 HPH800-71 HPH800-72 HPH800-73 HPH800-74 HPH800-75 HPH800-76 HPH800-77 HPH800-78 HPH800-79 HPH800-80 HPH800-81 HPH800-82 HPH800-83 HPH800-84 HPH800-85 HPH800-86 HPH800-87 HPH800-88 HPH800-89 HPH800-90 HPH800-91 HPH800-92 HPH800-93 HPH800-94 HPH800-95 HPH800-96 HPH800-97 HPH800-98 HPH800-99 HPH800-100 HPH800-101 HPH800-102 HPH800-103 HPH800-104 HPH800-105 HPH800-106 HPH800-107 HPH800-108 HPH800-109 HPH800-110 HPH800-111 HPH800-112 HPH800-113 HPH800-114 HPH800-115 HPH800-116 HPH800-117 HPH800-118 HPH800-119 HPH800-120 HPH800-121 HPH800-122 HPH800-123 HPH800-124 HPH800-125 HPH800-126 HPH800-127 HPH800-128 HPH800-129 HPH800-130 HPH800-131 HPH800-132 HPH800-133 HPH800-134 HPH800-135 HPH800-136 HPH800-137 HPH800-138 HPH800-139 HPH800-140 HPH800-141 HPH800-142 HPH800-143 HPH800-144 HPH800-145 HPH800-146 HPH800-147 HPH800-148 HPH800-149 HPH800-150 HPH800-151 HPH800-152 HPH800-153 HPH800-154 HPH800-155 HPH800-156 HPH800-157 HPH800-158 HPH800-159 HPH800-160 HPH800-161 HPH800-162 HPH800-163 HPH800-164 HPH800-165 HPH800-166 HPH800-167 HPH800-168 HPH800-169 HPH800-170 HPH800-171 HPH800-172 HPH800-173 HPH800-174 HPH800-175 HPH800-176 HPH800-177 HPH800-178 HPH800-179 HPH800-180 HPH800-181 HPH800-182 HPH800-183 HPH800-184 HPH800-185 HPH800-186 HPH800-187 HPH800-188 HPH800-189 HPH800-190 HPH800-191 HPH800-192 HPH800-193 HPH800-194 HPH800-195 HPH800-196 HPH800-197 HPH800-198 HPH800-199 HPH800-200 HPH800-201 HPH800-202 HPH800-203 HPH800-204 HPH800-205 HPH800-206 HPH800-207 HPH800-208 HPH800-209 HPH800-210 HPH800-211 HPH800-212 HPH800-213 HPH800-214 HPH800-215 HPH800-216 HPH800-217 HPH800-218 HPH800-219 HPH800-220 HPH800-221 HPH800-222 HPH800-223 HPH800-224 HPH800-225 HPH800-226 HPH800-227 HPH800-228 HPH800-229 HPH800-230 HPH800-231 HPH800-232 HPH800-233 HPH800-234 HPH800-235 HPH800-236 HPH800-237 HPH800-238 HPH800-239 HPH800-240 HPH800-241 HPH800-242 HPH800-243 HPH800-244 HPH800-245 HPH800-246 HPH800-247 HPH800-248 HPH800-249 HPH800-250 HPH800-251 HPH800-252 HPH800-253 HPH800-254 HPH800-255 HPH800-256 HPH800-257 HPH800-258 HPH800-259 HPH800-260 HPH800-261 HPH800-262 HPH800-263 HPH800-264 HPH800-265 HPH800-266 HPH800-267 HPH800-268 HPH800-269 HPH800-270 HPH800-271 HPH800-272 HPH800-273 HPH800-274 HPH800-275 HPH800-276 HPH800-277 HPH800-278 HPH800-279 HPH800-280 HPH800-281 HPH800-282 HPH800-283 HPH800-284 HPH800-285 HPH800-286 HPH800-287 HPH800-288 HPH800-289 HPH800-290 HPH800-291 HPH800-292 HPH800-293 HPH800-294 HPH800-295 HPH800-296 HPH800-297 HPH800-298 HPH800-299 HPH800-300 HPH800-301 HPH800-302 HPH800-303 HPH800-304 HPH800-305 HPH800-306 HPH800-307 HPH800-308 HPH800-309 HPH800-310 HPH800-311 HPH800-312 HPH800-313 HPH800-314 HPH800-315 HPH800-316 HPH800-317 HPH800-318 HPH800-319 HPH800-320 HPH800-321 HPH800-322 HPH800-323 HPH800-324 HPH800-325 HPH800-326 HPH800-327 HPH800-328 HPH800-329 HPH800-330 HPH800-331 HPH800-332 HPH800-333 HPH800-334 HPH800-335 HPH800-336 HPH800-337 HPH800-338 HPH800-339 HPH800-340 HPH800-341 HPH800-342 HPH800-343 HPH800-344 HPH800-345 HPH800-346 HPH800-347 HPH800-348 HPH800-349 HPH800-350 HPH800-351 HPH800-352 HPH800-353 HPH800-354 HPH800-355 HPH800-356 HPH800-357 HPH800-358 HPH800-359 HPH800-360 HPH800-361 HPH800-362 HPH800-363 HPH800-364 HPH800-365 HPH800-366 HPH800-367 HPH800-368 HPH800-369 HPH800-370 HPH800-371 HPH800-372 HPH800-373 HPH800-374 HPH800-375 HPH800-376 HPH800-377 HPH800-378 HPH800-379 HPH800-380 HPH800-381 HPH800-382 HPH800-383 HPH800-384 HPH800-385 HPH800-386 HPH800-387 HPH800-388 HPH800-389 HPH800-390 HPH800-391 HPH800-392 HPH800-393 HPH800-394 HPH800-395 HPH800-396 HPH800-397 HPH800-398 HPH800-399 HPH800-400 HPH800-401 HPH800-402 HPH800-403 HPH800-404 HPH800-405 HPH800-406 HPH800-407 HPH800-408 HPH800-409 HPH800-410 HPH800-411 HPH800-412 HPH800-413 HPH800-414 HPH800-415 HPH800-416 HPH80					

Air Cleaners 20211229 NIPSCO Residential Energy Efficiency Rebate Program Qualified Product List
Cory Dambach Dust Free Smoke Pollen nipsco ENERGY STAR Unique ID Brand Name Model Number
Additional Information Clean Delivery Rate cfm air cleaners docs librariesprovider11 energy efficiency
available rebates sfvrns 2 |||

ENERGY STAR Unique ID 2383703 2385148 2385147 2370951 2383677 2351754
2376211 2371985 2370955 237095 ... W, HP980 ,HP980BL,; ,HP980GR,;
,HP980WH, LP980TH DAP290BAW LAPKJ500GTB32 US-KJ500G-TB32 CAP-1000
AGH550 AP-1515H 120539** HPA300 Seiries HPA8350B Series FP-A80U TRIO
Plus WP500* CAF-Z85US W CAF-Z8...

lang:en score:13 filesize: 309.85 K page count: 12 document date: 2022-01-20



2020 Directory of Certified
Portable Electric Room Air Cleaners
Edition No. 2 - July



Independently Tested.
Consumer Trusted.

Published by
Association of Home Appliance Manufacturers
1111 19th Street, N.W., Suite 402
Washington, DC 20036
(202) 462-6965 www.ahamcertified.org

[\[pdf\]](#)

Crystal Reports Directory AC 4 P
Springer 2020 of Certified Portable Electric Room Air Cleaners 2 lug —
AirCleanerFullDir nuwaveoxypure resource

2020 Directory of Certified Portable Electric Room Air Cleaners Edition No. 2 July

Published by Ass ... ington, DE 19808-1674 :USA AGH500S 258 AGH490 290

AGH490Pro 290 AGH500 290 AGH500Pro 290 **AGH550** 290 **AGH550**Pro 290

Atmosphere MINI Access Business Group 7575 Fulton Street East Ada, MI ...

lang:en score:9 filesize: 735.1 K page_count: 25 document date: 2020-07-02