

## Walker 16854

# Walker Ultra EPA 16854 Direct Fit Catalytic Converter User Manual for Cadillac SRX

Model: 16854 | Brand: Walker

## 1. INTRODUCTION

This manual provides essential information for the installation, operation, and maintenance of the Walker Ultra EPA 16854 Direct Fit Catalytic Converter. This component is designed to meet stringent emissions standards for OBDII vehicles, ensuring effective emissions control and reliable performance. Its direct-fit design simplifies the installation process, making it suitable for professional automotive technicians. Constructed from durable stainless steel, this converter is built for longevity and consistent performance in various operating conditions.



Image of the Walker Ultra EPA 16854 Direct Fit Catalytic Converter, showing its overall shape and connection points.

## 2. PRODUCT FEATURES

- **EPA Compliant:** Designed for use on OBDII vehicles manufactured in 1996 and newer, meeting federal emissions standards. Consult local regulations for specific state requirements.
- **Direct-Fit Design:** Engineered for a bolt-on replacement, featuring OE-style hangers, brackets, routings, and heat shields. This design facilitates straightforward installation without requiring specialized fabrication or welding.
- **Assured Performance:** Utilizes OE-style high-technology washcoat and an optimal precious metal load to achieve the necessary reduction in tailpipe emissions for the specified vehicle application.
- **Strong and Durable Construction:** Features thick OE-style flanges, hangers, and brackets for enhanced strength and long-term durability.

- **OE-Style Heat Shields:** Includes aluminized heat shields, where originally equipped, to protect the vehicle's undercarriage from heat generated by the converter.

# NO BREAK-IN REQUIRED

Ready to operate with application-specific  
converter shell design and mat compression

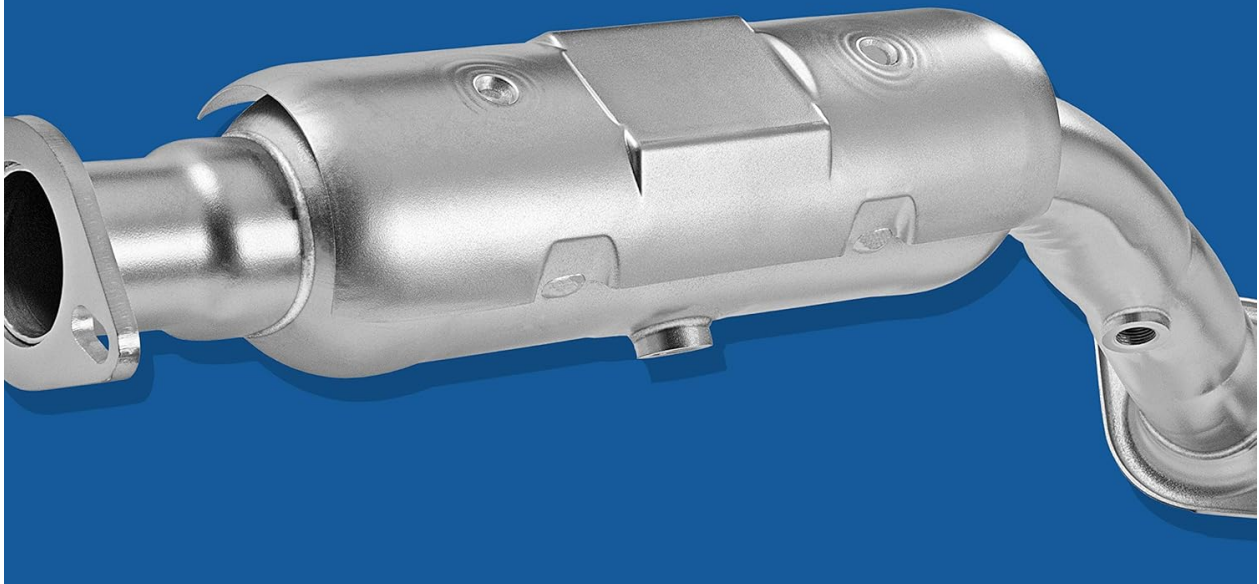


Image illustrating the 'No Break-In Required' feature of the catalytic converter, highlighting its readiness for immediate operation due to application-specific design.

### 3. COMPATIBILITY

---

This Walker Ultra EPA 16854 Catalytic Converter is specifically designed for the following vehicle applications:

- Cadillac SRX: 2012-2016 models

Before installation, verify compatibility using the vehicle's year, make, model, engine, and trim information to ensure correct fitment.

### 4. WHAT'S IN THE BOX

---

The package for the Walker Ultra EPA 16854 Catalytic Converter typically includes:

- One (1) Walker Catalytic Converter (Model 16854)

Additional installation hardware (gaskets, bolts, nuts) may be required and is often sold separately or reused from the original installation, depending on the specific vehicle and existing components.

## 5. INSTALLATION (SETUP)

---

Installation of a catalytic converter requires specialized tools and knowledge. It is highly recommended that this component be installed by a certified automotive professional to ensure proper fitment, function, and compliance with all applicable regulations.

### General Installation Guidelines:

1. **Safety First:** Ensure the vehicle is securely lifted and supported. Allow the exhaust system to cool completely before beginning work. Wear appropriate personal protective equipment.
2. **Preparation:** Disconnect the vehicle's battery. Remove any sensors (e.g., oxygen sensors) from the old converter.
3. **Removal of Old Converter:** Carefully unbolt or cut the old catalytic converter from the exhaust system. Take care not to damage adjacent components.
4. **Inspection:** Inspect the surrounding exhaust components, hangers, and mounting points for damage or wear. Replace any worn parts as necessary.
5. **Installation of New Converter:** Position the Walker 16854 converter. Its direct-fit design should align with existing mounting points. Use new gaskets and hardware as recommended by the manufacturer. Torque all fasteners to the vehicle manufacturer's specifications.
6. **Sensor Reinstallation:** Reinstall oxygen sensors into the new converter. Ensure wiring is routed correctly and not pinched.
7. **Final Checks:** Verify all connections are secure and there are no exhaust leaks. Reconnect the battery.



Image depicting a technician installing an exhaust component, illustrating the direct-fit design for ease of installation.



Close-up image of the robust, OE-style flanges of the catalytic converter, designed for secure and durable connections.

## 6. OPERATION

---

The Walker Ultra EPA 16854 Catalytic Converter functions as a critical component of your vehicle's exhaust system, converting harmful pollutants in engine exhaust gases into less toxic substances. Once installed, the converter operates automatically as part of the vehicle's emissions control system.

This converter is designed to maintain optimal performance and prevent the illumination of the "Check Engine Light" due to emissions-related codes, provided the vehicle's engine and other emissions components are functioning correctly.

# KEEPS THE CHECK ENGINE LIGHT OFF

Optimal washcoat technology keeps  
the check engine light off for emissions codes

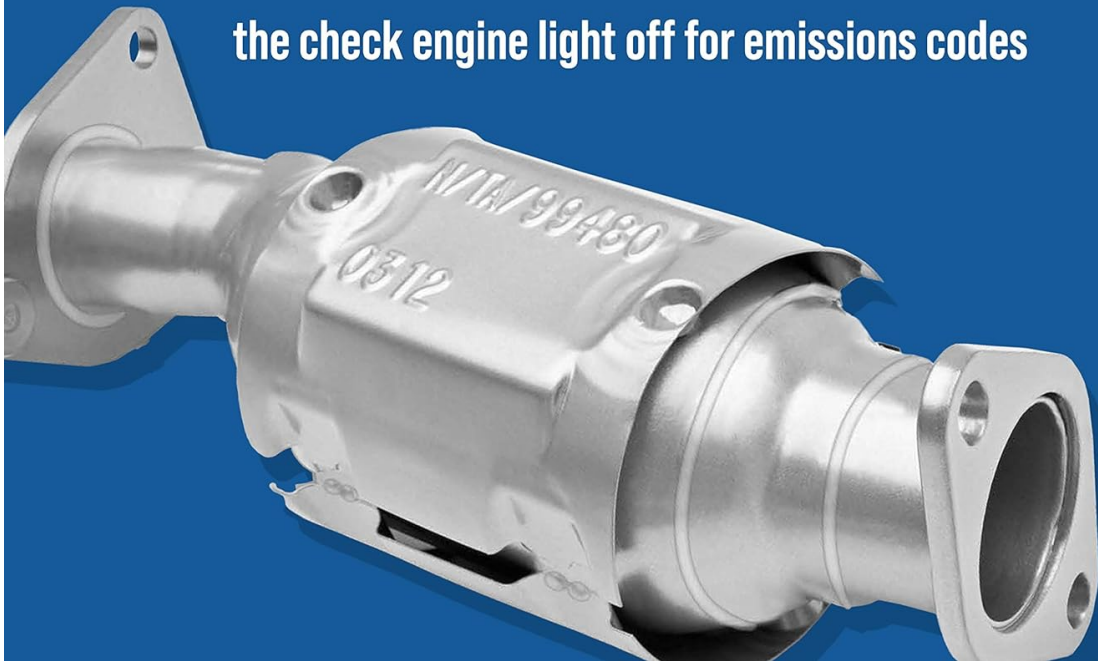


Image emphasizing the catalytic converter's ability to keep the 'Check Engine Light' off, attributed to optimal washcoat technology for emissions control.



WALKER® CALCAT CONVERTERS

Designed for use on OBDII vehicles, 1996 and newer and non-OBD 1995 and older. Legal for sale in California, Colorado, New York & other states requiring CARB-compliant replacement converters.

Image displaying the 'CARB Compliant' logo for Walker CalCat Converters, indicating compliance for OBDII vehicles 1996 and newer, and non-OBD 1995 and older, legal for sale in specific states.

## 7. MAINTENANCE

---

Catalytic converters are generally maintenance-free components. However, their longevity and performance are directly linked to the overall health of your vehicle's engine and exhaust system. Regular vehicle maintenance is crucial:

- **Engine Tune-ups:** Ensure your engine receives regular tune-ups, including spark plug replacement, air filter changes, and fuel system cleaning, to prevent unburnt fuel from reaching and damaging the converter.
- **Oxygen Sensor Checks:** Have oxygen sensors checked periodically. Faulty sensors can lead to incorrect air-fuel mixtures, which can negatively impact converter efficiency and lifespan.
- **Exhaust System Inspection:** Periodically inspect the entire exhaust system for leaks, damage, or loose connections that could affect converter performance.

## 8. TROUBLESHOOTING

---

If you experience issues after installing the catalytic converter, consider the following common troubleshooting steps. It is recommended to consult a qualified mechanic for diagnosis and repair.

- **Check Engine Light (CEL) On:** If the CEL illuminates after installation, it may indicate an issue with the converter itself or other components in the emissions system (e.g., oxygen sensors, engine misfires). A diagnostic scan tool can retrieve trouble codes to pinpoint the problem.
- **Reduced Engine Performance:** A clogged or damaged catalytic converter can restrict exhaust flow, leading to reduced engine power, poor acceleration, and decreased fuel efficiency. This often requires



professional diagnosis.

- **Rattling Noise:** A rattling sound from under the vehicle, especially when starting or accelerating, could indicate a broken internal substrate within the converter.
- **Exhaust Leaks:** Check for any exhaust leaks around the converter's connections. Leaks can affect sensor readings and overall emissions performance.

Note: The Walker Ultra EPA 16854 is designed to be EPA compliant. However, state-specific regulations may vary. Ensure your vehicle meets all local emissions requirements.

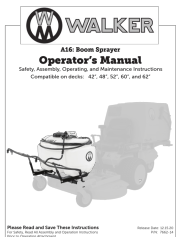
## 9. SPECIFICATIONS

Attribute	Detail
Brand	Walker
Model Number	16854
Vehicle Service Type	Car
Compatibility	Cadillac SRX (2012-2016)
Dimensions (L x W x H)	35 x 9.88 x 5.25 inches
Item Weight	7.5 pounds
UPC	086387168540
Manufacturer	Tenneco (Dynomax, Walker, Thrush)
Automotive Fit Type	Vehicle Specific Fit
EPA Compliance	For OBDII vehicles, 1996 and newer

## 10. WARRANTY AND SUPPORT

For detailed information regarding the product warranty, please refer to the official documentation provided by Walker or visit the manufacturer's official website. Warranty terms typically cover manufacturing defects and may vary based on purchase location and specific product. For technical support or inquiries, please contact Walker customer service directly through their official channels.

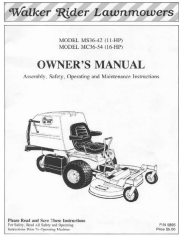


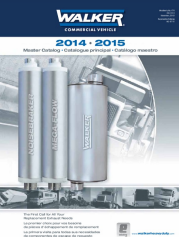
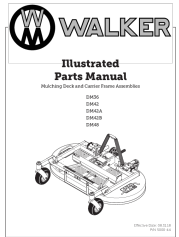
### Related Documents - 16854



**WALKER**  
A16 Boom Sprayer  
**Operator's Manual**  
Safety, Assembly, Operating, and Maintenance Instructions  
Compatible on decks: 42", 48", 50", 60", and 66"

[Walker A16 Boom Sprayer Operator's Manual: Safety, Assembly, Operation, Maintenance](#)

Comprehensive operator's manual for the Walker A16 Boom Sprayer, covering safety instructions, assembly procedures, operating guidelines, maintenance tips, troubleshooting, and parts lists. Compatible with various Walker mower decks.

 <p>Walker Rider Lawnmowers MODEL MS36-42 (11-HP) MODEL MC36-54 (16-HP) <b>OWNER'S MANUAL</b> Assembly, Safety, Operating and Maintenance Instructions</p> <p>Clear Road and Lawn Tire Instructions Detailed Step-By-Step Assembly Instructions Part 9001</p>	<p><a href="#">Walker Rider Lawnmower Owner's Manual MS36-42 MC36-54</a></p> <p>Owner's manual for Walker Rider Lawnmower models MS36-42 (11-HP) and MC36-54 (16-HP), detailing assembly, safety, operation, and maintenance. Includes specifications and troubleshooting.</p>
 <p><b>WALKER</b> OPERATING INSTRUCTIONS</p> <p>WP4K5021</p> <p>SAORVIEW APPROVED</p> <p>COLOUR TELEVISION WITH REMOTE CONTROL</p> <p>www.walkerlawnmowers.com</p>	<p><a href="#">WALKER WP4K5021 Colour Television Operating Instructions</a></p> <p>Comprehensive operating instructions for the WALKER WP4K5021 Colour Television, covering setup, features, operation, connectivity, and troubleshooting.</p>
 <p><b>WALKER</b> Illustrated Parts Manual</p> <p>C19</p>	<p><a href="#">Walker C19 Illustrated Parts Manual</a></p> <p>Detailed illustrated parts manual for the Walker C19 riding mower, providing comprehensive lists and diagrams for all components, including chassis, engine, drive systems, and accessories. Essential for maintenance and repair.</p>
 <p><b>WALKER</b> COMMERCIAL VEHICLE 2014-2015 Master Catalog</p>	<p><a href="#">Walker Commercial Vehicle 2014-2015 Master Catalog</a></p> <p>Comprehensive catalog from Walker featuring exhaust system components for commercial vehicles, including mufflers, flex pipes, and accessories. Covers heavy-duty, medium-duty trucks, buses, and agricultural applications with model identification and technical specifications.</p>
 <p><b>WALKER</b> Illustrated Parts Manual</p> <p>Mulching Deck and Carrier Frame Assemblies</p> <p>DM36 DM42 DM42A DM42B DM48</p>	<p><a href="#">Walker Illustrated Parts Manual for DM36, DM42, DM42A, DM42B, DM48 Mulching Decks and Carrier Frames</a></p> <p>This illustrated parts manual provides detailed information for Walker DM36, DM42, DM42A, DM42B, and DM48 mulching decks and carrier frame assemblies. It includes part numbers, descriptions, diagrams, and assembly instructions to help identify and order replacement components for Walker lawn mowers.</p>