

ONKRON G120-BLK

ONKRON G120-BLK Single Monitor Wall Mount Instruction Manual

Model: G120-BLK

INTRODUCTION

This manual provides detailed instructions for the safe and proper installation, operation, and maintenance of your ONKRON G120-BLK Single Monitor Wall Mount. Please read this manual thoroughly before installation and retain it for future reference.



Image: The ONKRON G120-BLK Single Monitor Wall Mount, a black articulating arm designed for wall mounting.

SAFETY INFORMATION

WARNING: Improper installation or use of this product may result in serious injury or damage. If you do not understand these instructions or have doubts about the safety of the installation, please contact a qualified installer or ONKRON customer support.

- Ensure the mounting surface can safely support the combined weight of the mount and your monitor.
- Do not exceed the maximum weight capacity of 17.6 lbs (8 kg).
- This mount is designed for monitors between 13 and 34 inches.
- Always use the provided hardware. If any parts are missing or defective, contact ONKRON for replacement.
- Exercise caution when handling the gas spring mechanism. The spring is under tension and can cause injury if not handled correctly. Do not remove plastic covers over the main poles as they are for protection.
- Keep children and pets away during installation.

PACKAGE CONTENTS

Verify that all components are present before beginning installation.



Image: All components included in the ONKRON G120-BLK package, including the mount, various screws, washers, wall anchors, and an Allen key.

- Monitor Wall Mount Assembly
- VESA Plate
- Wall Plate
- Mounting Hardware (screws, anchors, washers for various VESA sizes)
- Allen Key (6mm)
- Instruction Manual

SETUP AND INSTALLATION

Follow these steps carefully for a secure installation. It is recommended to have a second person assist during monitor attachment.

Installation Video Guide

Your browser does not support the video tag.

Video: An official ONKRON instruction video demonstrating the installation process for the G120-B monitor mount.

Step 1: Marking Drill Holes

1. Determine the desired mounting location on your wall. Ensure it is a solid surface (e.g., wood stud, concrete) capable of supporting the weight.
2. Hold the wall plate against the wall at the desired height and use a pencil to mark the drill hole locations.



Image: The ONKRON G120-BLK monitor mount securely installed on a brick wall, demonstrating a typical mounting scenario.

Step 2: Installing the Mount

1. Drill pilot holes at the marked locations. The drill bit size will depend on your wall material and the anchors used.
2. Secure the wall plate to the wall using the appropriate screws and anchors. Ensure it is firmly attached and level.

Step 3: Attaching the Monitor to the Mount

1. Attach the VESA plate to the back of your monitor using the correct screws (M4 or M6) that fit your

monitor's VESA pattern (75x75mm or 100x100mm). Ensure the screws are tightened securely but do not overtighten.

2. Carefully lift the monitor and slide the VESA plate onto the arm's mounting head. Ensure it clicks into place or is secured with the provided locking mechanism.

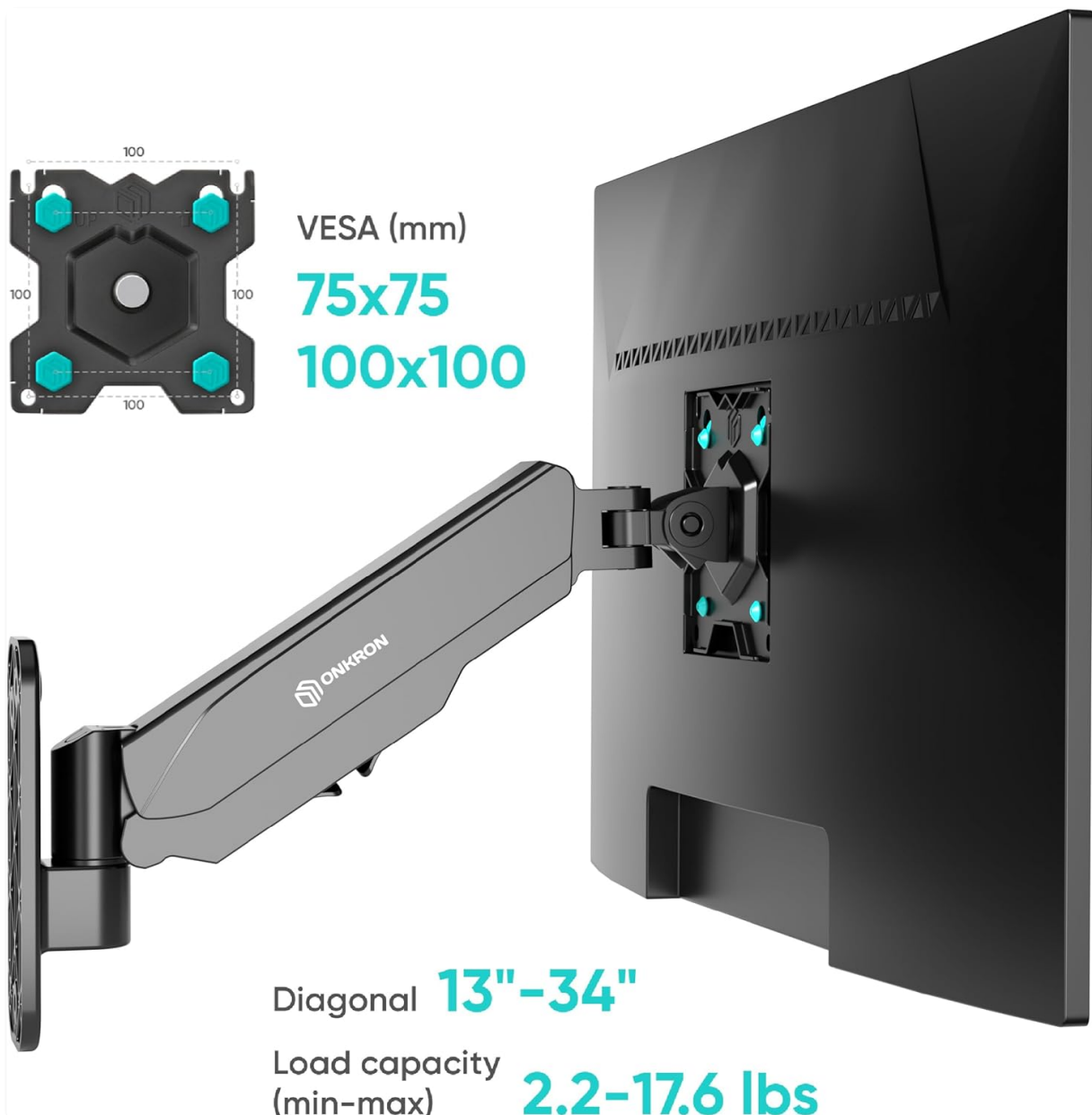


Image: Diagram illustrating VESA 75x75mm and 100x100mm mounting patterns, compatible screen diagonal (13"-34"), and load capacity (2.2-17.6 lbs).

Step 4: Adjusting for Monitor Weight (Gas Spring Tension)

The gas spring tension must be adjusted after the monitor is attached to ensure it holds its position. If the monitor sags or springs up, adjust the tension.

1. Locate the gas spring adjustment screw on the arm.
2. Use the provided Allen key to turn the screw:
 - Turn **counter-clockwise** for lighter screens (to reduce tension).
 - Turn **clockwise** for heavier screens (to increase tension).
3. Adjust gradually until the monitor stays in the desired vertical position when released.

Built-in gas spring must be adjusted after screen's installation

If the spring tension is not adjusted, the mount will fail to hold the monitor in place or it will keep pushing the screen upwards.

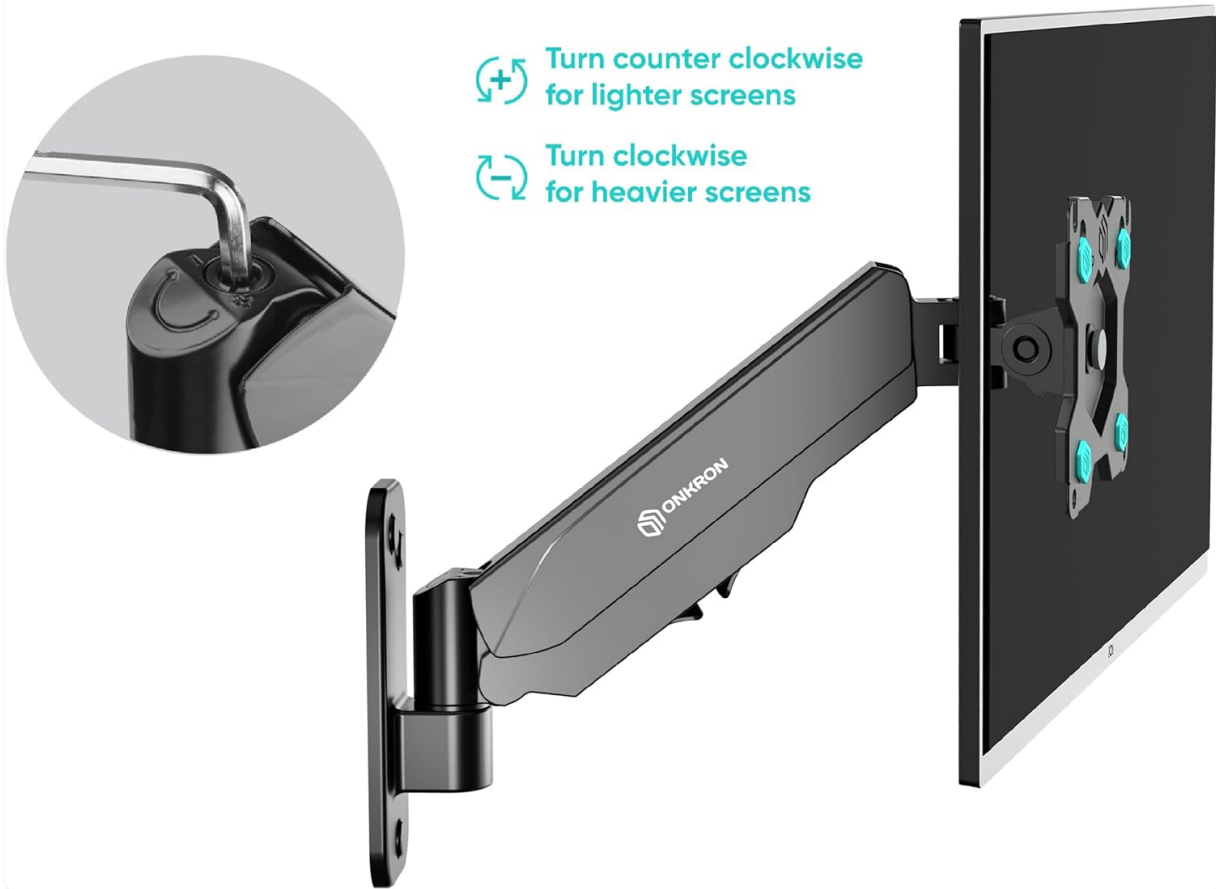


Image: Close-up of the gas spring adjustment point on the monitor arm, showing the Allen key inserted and directional arrows for adjusting tension for lighter or heavier screens.

OPERATING THE MONITOR MOUNT

The ONKRON G120-BLK offers a range of adjustments for optimal viewing comfort.

- **Height Adjustment:** The arm allows for 11 inches (28 cm) of vertical height adjustment. Gently push or pull the monitor to the desired height.
- **Extension/Retraction:** The arm can extend from 3.5 inches (8.9 cm) to 13.7 inches (34.8 cm) from the wall.
- **Tilt:** Adjust the monitor tilt from +90° to -45° to reduce glare and find your preferred viewing angle.
- **Swivel:** Swivel the monitor 180° left or right.
- **Rotation:** Rotate the monitor 360° for landscape or portrait orientation.

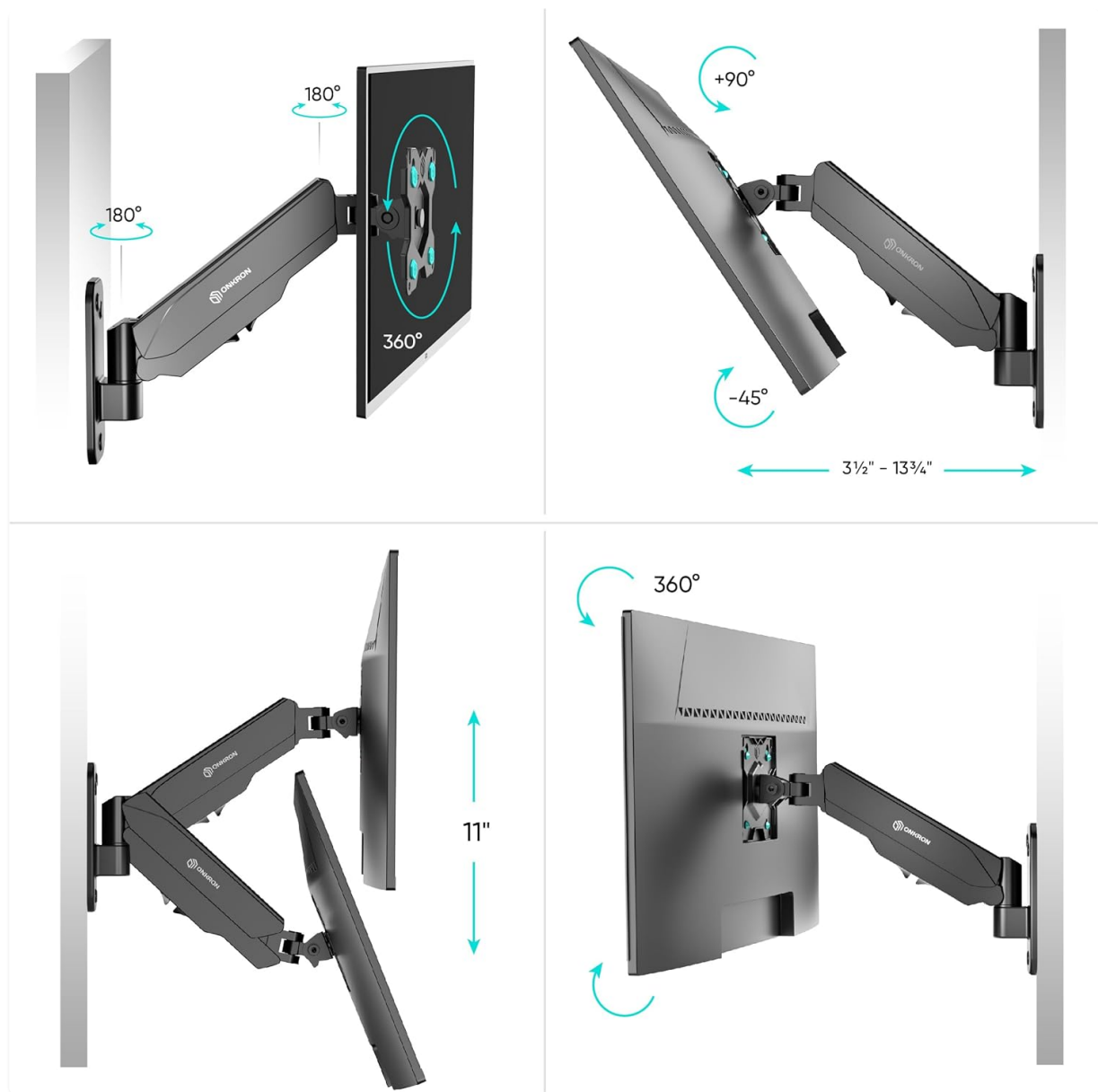


Image: Four panels demonstrating the full motion capabilities of the mount: 180° swivel, 360° rotation, +90° to -45° tilt, and 11 inches of height adjustment.

Cable Management

Utilize the integrated cable management system to keep your workspace tidy.

1. Route monitor cables through the channels on the underside of the arm.
2. Secure the cables using the provided clips or covers to maintain a clean appearance.



Reliable cable management system

Image: Close-up view of the monitor arm showing a cable neatly routed through the integrated cable management channel.

MAINTENANCE

Regular maintenance ensures the longevity and optimal performance of your monitor mount.

- **Cleaning:** Wipe the mount with a soft, damp cloth. Avoid abrasive cleaners or solvents.
- **Periodic Checks:** Periodically check all screws and connections to ensure they remain tight. Re-tighten if necessary.
- **Gas Spring Adjustment:** If your monitor's weight changes or if the arm no longer holds its position, re-adjust the gas spring tension as described in the Setup section.

TROUBLESHOOTING

Refer to this section for solutions to common issues.

Problem	Possible Cause	Solution
---------	----------------	----------

Problem	Possible Cause	Solution
Monitor sags or does not stay at desired height.	Gas spring tension is too low for the monitor's weight.	Increase gas spring tension by turning the adjustment screw clockwise with the Allen key. Refer to 'Adjusting for Monitor Weight' in the Setup section.
Monitor springs up or is difficult to push down.	Gas spring tension is too high for the monitor's weight.	Decrease gas spring tension by turning the adjustment screw counter-clockwise with the Allen key. Refer to 'Adjusting for Monitor Weight' in the Setup section.
Mount feels unstable or wobbly.	Loose connections or improper wall installation.	Check all mounting screws on the wall plate and VESA plate. Ensure they are securely tightened. Verify the wall can support the mount and monitor.
Difficulty with monitor movement (tilt, swivel, rotation).	Joints are too tight.	Some joints may have adjustable tension screws. Loosen slightly if movement is too stiff. Do not over-loosen.

SPECIFICATIONS





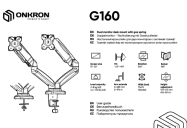

- **Model:** G120-BLK
- **Screen Size Compatibility:** 13 - 34 inches
- **Weight Capacity:** 2.2 - 17.6 lbs (1 - 8 kg)
- **VESA Compatibility:** 75x75mm, 100x100mm
- **Tilt Angle:** +90° to -45°
- **Swivel Angle:** 180°
- **Rotation:** 360°
- **Height Adjustment:** 11 inches (28 cm)
- **Arm Extension:** 3.5 inches (8.9 cm) to 13.7 inches (34.8 cm)
- **Material:** Aluminum
- **Product Dimensions:** 16.34 x 2.28 x 6.61 inches (41.5 x 5.8 x 16.8 cm)
- **Item Weight:** 3.96 pounds (1.8 kg)

WARRANTY AND SUPPORT

ONKRON products are manufactured with quality and durability in mind. For specific warranty details, please refer to the warranty card included with your product or visit the official ONKRON website. If you encounter any issues or have questions regarding your ONKRON G120-BLK monitor mount, please contact ONKRON customer support for assistance. Our experts are available to help.

Contact Information: Please refer to the ONKRON website or product packaging for the most up-to-date contact details.

Related Documents - G120-BLK

 <p>G120</p>	<p>ONKRON G120 Full Motion TV Mount Articulating Wall Mount for 13-34" Screens</p> <p>The ONKRON G120 is a versatile full-motion TV mount designed for 13-34 inch screens. This articulating wall mount offers extensive adjustability, including tilt, swivel, and rotation, with a robust load capacity and VESA compatibility. Easy installation guide included.</p>
 <p>G80</p>	<p>ONKRON G80 Full Motion Desk Mount User Manual</p> <p>Detailed instructions and specifications for the ONKRON G80 full motion desk mount, covering installation, adjustments, and safety guidelines for monitors.</p>
 <p>G150</p>	<p>ONKRON G150 Full Motion TV Mount - Installation and Specifications</p> <p>Comprehensive guide for the ONKRON G150 full motion TV mount, covering installation, specifications, safety, and adjustments for screens 13-34 inches.</p>
 <p>R1</p>	<p>ONKRON R1 Roto TV and Monitor Wall Mount Installation Guide</p> <p>Comprehensive installation guide for the ONKRON R1 Roto wall mount. This manual provides step-by-step instructions for securely mounting 10-35 inch TVs and monitors (VESA 75x75/100x100) to stud or concrete walls, including hardware details and safety recommendations.</p>
 <p>G160</p>	<p>ONKRON G160 Dual Monitor Desk Mount User Manual</p> <p>Comprehensive user guide for the ONKRON G160 dual monitor desk mount, covering installation, features, safety, and warranty. Supports 13-32 inch monitors.</p>
 <p>G50</p>	<p>ONKRON G50 Full Motion Desk Mount User Manual and Installation Guide</p> <p>Comprehensive guide for the ONKRON G50 full motion desk mount, detailing installation steps, features, safety precautions, and adjustment procedures for optimal monitor setup. Supports various screen sizes and VESA standards.</p>