

Loraffe DD-AR-001

Ultrasonic Rodent Repellent for Car Engine

Model: DD-AR-001 | Brand: Loraffe

INTRODUCTION

The Loraffe DD-AR-001 Ultrasonic Rodent Repellent is designed to protect your vehicle's engine bay and other areas from rodent damage. This device utilizes a combination of fluctuating ultrasonic sound waves and flashing LED strobe lights to create an inhospitable environment for pests such as rats, mice, and squirrels, deterring them from nesting or chewing on wires and components. Its battery-operated, cordless design ensures convenient placement and long-lasting protection.

PRODUCT FEATURES

- **Dual Ultrasonic & LED Rodent Repeller:** Combines fluctuating ultrasonic sound waves with flashing dual LED strobe lights to drive away rodents like rats, mice, squirrels, and other pests. Ideal for under-hood use to prevent rodent nesting and chewing on wires or components. A powerful rodent deterrent for car engine protection.
- **Cordless, Battery Operated Convenience:** Powered by 3 AA alkaline batteries (not included), this cordless rodent repeller offers at least 60 days of continuous operation. No need for wiring or vehicle power—perfect for long-term storage or vehicles not driven frequently. Ideal for users seeking a cordless, battery-operated rodent repellent solution.
- **Smart Energy-Saving Design:** Equipped with intelligent auto standby mode that detects engine vibrations—automatically powers down while the vehicle is in motion. Conserves battery life while ensuring protection is active whenever the vehicle is parked.
- **Heat-Resistant & Engine Bay Ready:** Constructed with high-temperature-resistant materials designed to withstand the heat of vehicle engine compartments. Provides consistent performance even in hot environments, making it a reliable rodent repellent for cars, trucks, and tractors.
- **Quick Installation & Versatile Use:** Easy to mount with included reusable zip ties—no tools or wiring required. Installs in minutes in cars, trucks, boats, RVs, or tractors. Also works in garages, barns, sheds, attics, basements, and warehouses for indoor rodent protection.

PRODUCT OVERVIEW AND COMPONENTS

Familiarize yourself with the various parts of your Loraffe Rodent Repellent for optimal use.

Installation Steps

1



Pinch the release latches on both sides of the battery compartment.

2



Pull out the battery compartment.

3



Insert 3 AA alkaline batteries, following the + and - marks.

4



Push the battery compartment back.

5



Make sure it is locked into place.

6



Switch the Red On/Off switch to turn on the rodent repellent.

Note: Batteries are not included in the package.

Image: Detailed diagram showing the various components of the Loraffe Rodent Repellent, including its dimensions.

- A - **Red indicator light:** Indicates working status.
- B - **Green indicator light:** Indicates ultrasound activity.
- C - **LED strobe lights:** Flashing lights for deterrence.
- D - **Ultrasonic speaker:** Emits ultrasonic sound waves.
- E - **Battery compartment release latches:** Used to open the battery compartment.
- F - **Battery compartment:** Holds the 3 AA batteries.
- G - **Mode switch (TEST/ULTRA):** Selects between audible test mode and inaudible ultrasonic mode.
- H - **Power switch (ON/OFF):** Turns the device on or off.

SPECIFICATIONS

Specification	Value
Product Dimensions	3 x 3 x 3 inches
Item Weight	4.2 ounces
Manufacturer	Loraffe
Item Model Number	DD-AR-001
Batteries Required	3 x AA 1.5V alkaline batteries (not included)
Battery Life	Approx. 45-60 days
Ultrasonic Frequency	25 - 55 KHz
Output Sound Pressure	Approx. 100 dB (± 20%)
Operating Temperature Range	-20°C ~ 80°C (4°F ~ 176°F)

INSTALLATION

Follow these steps to install batteries and mount your rodent repellent.

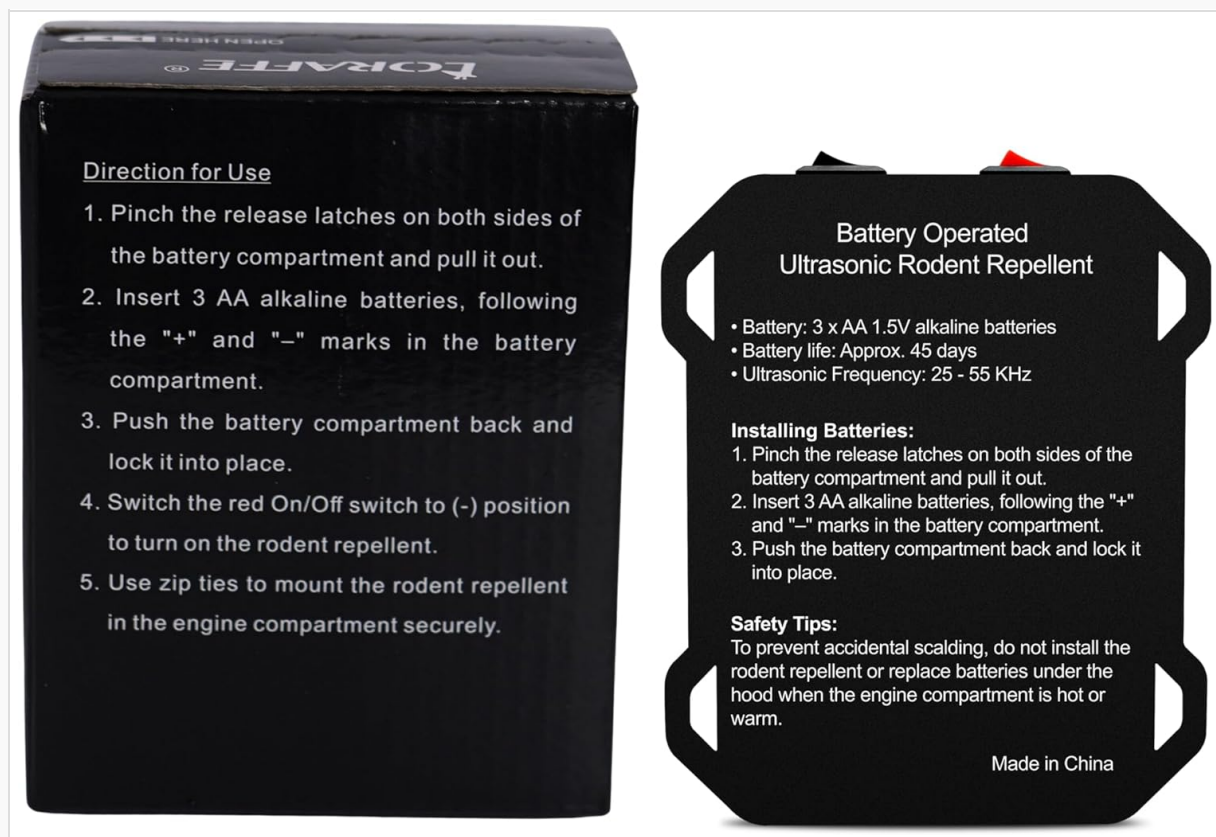


Image: Visual guide for battery installation.

1. **Install Batteries:** Pinch the release latches on both sides of the battery compartment and pull it out. Insert 3 AA alkaline batteries, following the "+" and "-" marks inside the compartment. Push the battery compartment back until it locks into place.
2. **Power On:** Switch the red On/Off switch to the ON position to activate the rodent repellent.
3. **Mounting:** Use the included reusable zip ties to securely mount the repellent in the desired location, such as the engine compartment of your vehicle. Ensure the device is placed where its ultrasonic

waves and strobe lights are not obstructed.

Safety Tip: To prevent accidental scalding, do not install the rodent repellent or replace batteries under the hood when the engine compartment is hot or warm.



Image: Before and After installation in a car engine bay.

OPERATION

The Loraffe Rodent Repellent features two operational modes and an intelligent energy-saving design.

Mode Selection

- **ULTRA Mode:** This is the primary operating mode. In this mode, the device emits ultrasonic sound waves that are generally inaudible to humans but highly irritating to rodents. The LED strobe lights will also flash periodically. This mode is recommended for continuous deterrence.



Image: Device operating in ULTRA Mode, emitting inaudible ultrasonic sounds.

- **TEST Mode:** This mode produces an audible sound, allowing you to verify that the ultrasonic speaker is functioning correctly. It is not intended for continuous use as a repellent. Switch to TEST mode briefly to confirm functionality, then return to ULTRA mode for effective deterrence.

BATTERY OPERATED RODENT REPELLENT

Emit ultrasonic waves and strobe lights, creating a hostile environment for rodents to stay and nest.

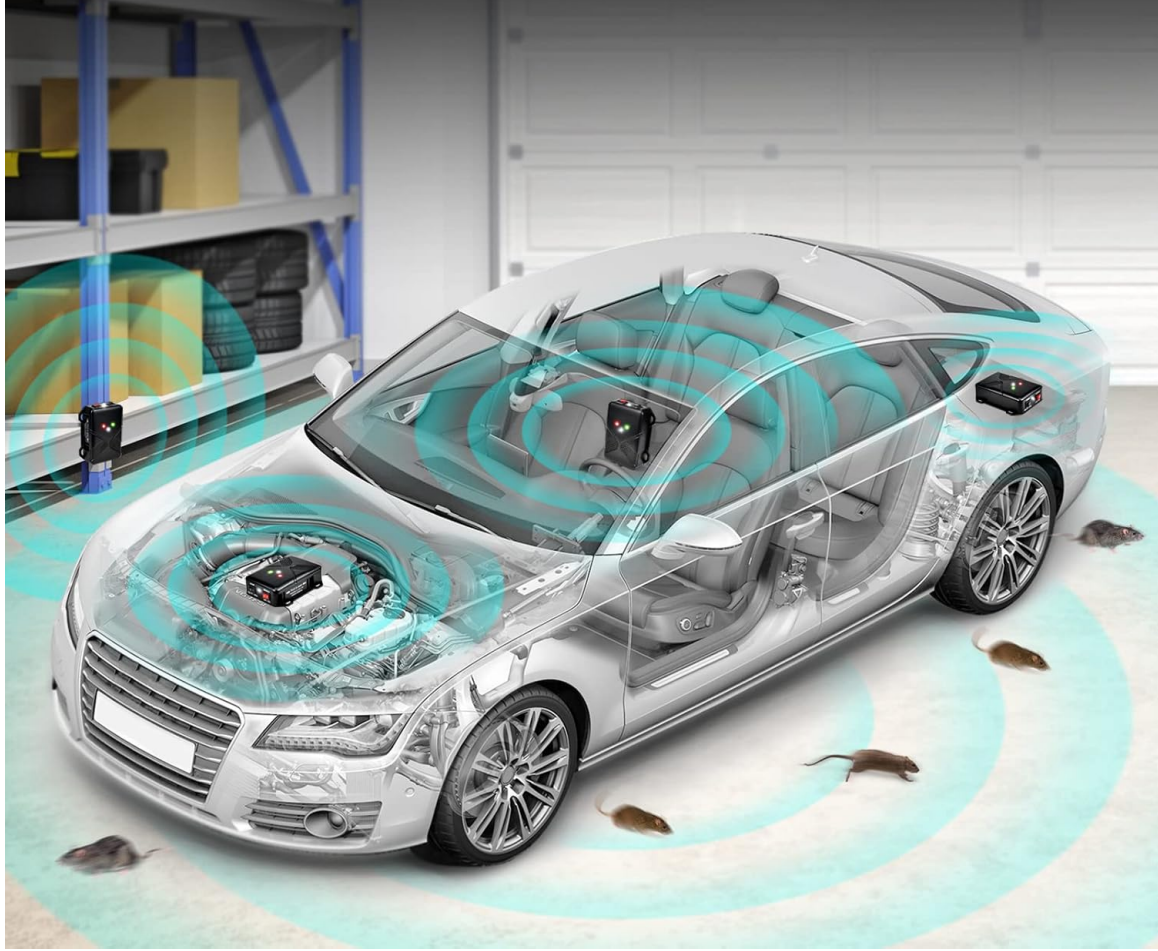


Image: Device operating in TEST Mode, emitting audible sonic sounds.

Smart Energy-Saving Design

The repellent is equipped with an intelligent auto standby mode. It detects engine vibrations and automatically powers down while the vehicle is in motion. This feature conserves battery life, ensuring the device is active and providing protection whenever the vehicle is parked and vulnerable to rodent activity.

MAINTENANCE

- **Battery Replacement:** The device is powered by 3 AA alkaline batteries. Battery life is approximately 45-60 days depending on usage. When the red indicator light starts blinking or the device stops functioning, it's time to replace the batteries. Follow the battery installation steps outlined in the Installation section.
- **Cleaning:** Periodically wipe the device with a dry, soft cloth to remove dust or debris. Do not use harsh chemicals or immerse the device in water. Ensure the speaker grilles are clear of obstructions for optimal performance.

TROUBLESHOOTING

Problem	Possible Cause	Solution
Device does not turn on or lights are off.	Batteries are dead or incorrectly installed. Power switch is off.	Replace batteries with fresh AA alkaline batteries. Ensure batteries are inserted with correct polarity. Check that the ON/OFF switch is in the 'ON' position.
Repellent seems ineffective.	Improper placement. Obstructions blocking ultrasonic waves. Rodents have become accustomed.	Relocate the device to a more central or effective position. Ensure no large objects are blocking the ultrasonic speaker. Consider rotating the device's position or adding another unit for larger areas.
Red indicator light is blinking.	Low battery power.	Replace the 3 AA alkaline batteries immediately.

SAFETY INFORMATION

- **Seizure Warning:** The flashing LED strobe lights may potentially trigger seizures for people and pets with photosensitive epilepsy. Exercise caution when operating the device in areas accessible to individuals or animals susceptible to such conditions.
- **Heat Resistance:** While designed to withstand engine bay temperatures, avoid direct contact with extremely hot engine components.
- **Keep Out of Reach of Children:** This device is not a toy. Store it in a safe place away from children and pets when not in use.
- **Battery Safety:** Do not mix old and new batteries. Do not mix alkaline, standard (carbon-zinc), or rechargeable (nickel-cadmium) batteries. Dispose of used batteries properly according to local regulations.

VERSATILE USE CASES

Beyond car engine bays, the Loraffe Rodent Repellent can be effectively used in various other locations to deter pests.

BEFORE

Rodents are nesting in cars and chewing through wires



AFTER

The repellents are emitting ultra sonic waves and strobe lights to prevent rodent visits



SEIZURE WARNING:

The flashing lights may potentially trigger seizures for people and pets with photosensitive epilepsy.

Image: Examples of various locations where the repellent can be used.

- **Vehicles:** Cars, trucks, RVs, boats, tractors.
- **Indoor Spaces:** Attics, basements, crawl spaces, garages, sheds, barns, storage rooms.

WARRANTY AND SUPPORT

This Loraffe product comes with a **1-year warranty** from the date of purchase, covering defects in materials and workmanship under normal use. For warranty claims, technical support, or any questions regarding your device, please contact Loraffe customer service through their official channels. Keep your purchase receipt as proof of purchase.