



Manuals.plus /

› TENMOS /

› TENMOS T12 Wireless Gaming Mouse Instruction Manual

TENMOS T1205

TENMOS T12 Wireless Gaming Mouse Instruction Manual

Model: T1205

INTRODUCTION

Thank you for choosing the TENMOS T12 Wireless Gaming Mouse. This device combines advanced 2.4GHz wireless technology with a rechargeable design, silent click buttons, and customizable LED lighting to enhance your computing experience. This manual will guide you through the setup, operation, and maintenance of your new mouse.



Figure 1: TENMOS T12 Wireless Gaming Mouse (Silver)

WHAT'S IN THE BOX

Please verify that all items are present in your package:

- T12 Wireless Mouse
- USB Receiver
- USB Charging Cable
- User Manual

Your browser does not support the video tag.

Video 1: Unboxing the TENMOS T12 Wireless Mouse, showing the mouse, USB receiver, charging cable, and user manual.

KEY FEATURES

- **2.4G Wireless & Rechargeable:** Advanced 2.4GHz wireless technology ensures stable transmission up to 30ft / 10m. The mouse features a rechargeable battery, eliminating the need for disposable batteries.
- **Quiet Click:** Left and right buttons are designed for silent operation, suitable for environments where noise reduction is desired.
- **Cool LED Light:** Features 7 soothing LED lights that change randomly during use. The LED lights can be turned off via a switch on the bottom of the mouse.

- **Plug and Play:** Includes a USB receiver for immediate use without additional driver installation.
- **3 Adjustable DPI:** Offers 3 adjustable DPI settings (800, 1600, 2400) to control cursor speed.
- **Wide Compatibility:** Compatible with Windows XP, Windows Vista, Win7/8/10, and Mac OS systems.



Figure 2: Ergonomic Design for enhanced comfort and resistance to sweat, fingerprints, and grease.



Figure 3: Silent Click feature for quiet use in various environments.

SETUP INSTRUCTIONS

1. Locate the USB receiver. It is typically stored in the package with the charging cable.
2. Plug the USB receiver into an available USB port on your computer (desktop, laptop, or PC).
3. Turn on the mouse using the ON/OFF switch located on the bottom of the device.
4. The mouse is plug-and-play and should connect automatically. No additional drivers are required.

OPERATING INSTRUCTIONS

DPI Adjustment

The mouse features 3 adjustable DPI levels (800, 1600, 2400) to control cursor sensitivity. Use the DPI+/DPI- buttons located near the scroll wheel to cycle through the settings and find your preferred speed.

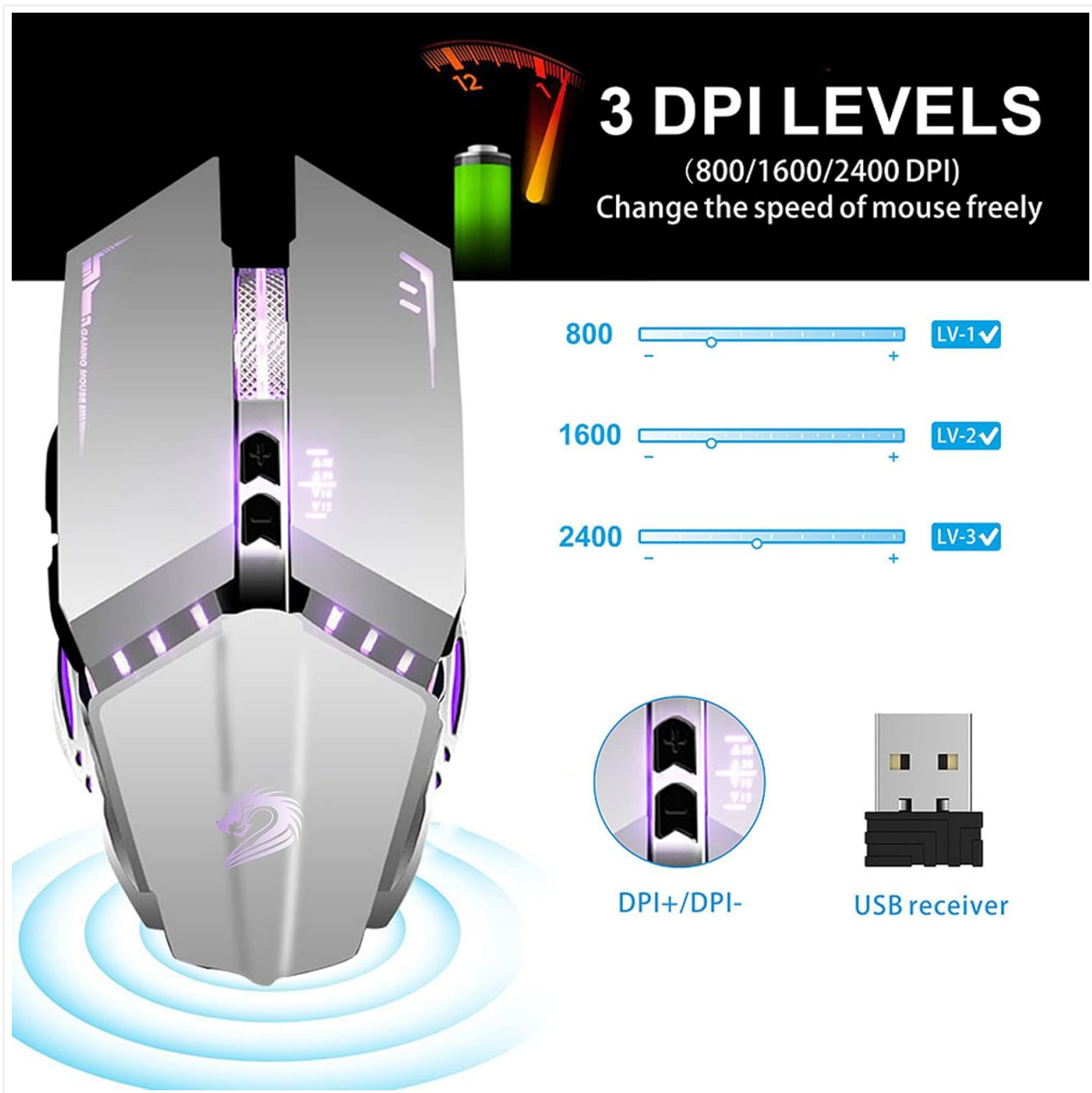


Figure 4: DPI adjustment buttons and available sensitivity levels.

LED Light Control

The mouse features 7 soothing LED lights that change colors randomly. To turn off the LED lights, use the dedicated switch located on the bottom of the mouse. Turning off the lights can help conserve battery life.

7 Color Breathing Light

LED light changes color randomly.

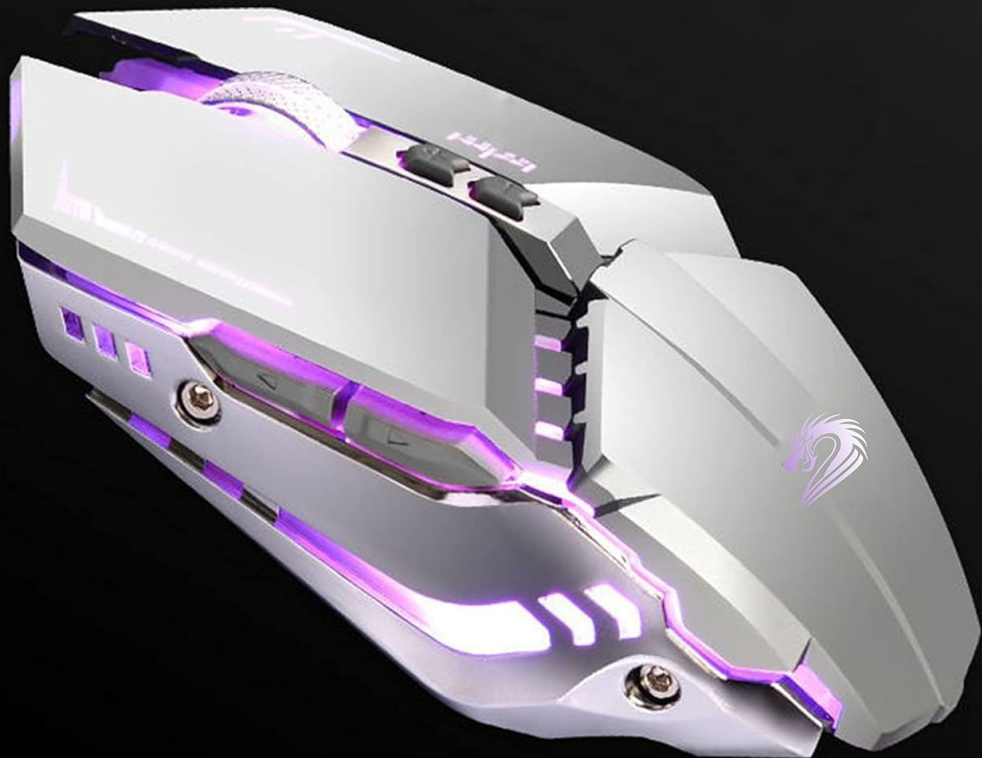


Figure 5: The 7-color breathing LED light feature of the mouse.

Your browser does not support the video tag.

Video 2: Demonstration of the T12 LED Wireless Mouse's changing light patterns.

Forward/Backward Buttons

Utilize the side buttons for quick navigation, such as moving forward or backward in web browsers or file explorers.

Sleep Mode

To conserve energy, the mouse will enter a sleeping mode if not used for 10 minutes. Press any button to wake it up.

CHARGING INSTRUCTIONS

When the mouse battery is low, connect the provided USB charging cable to the charging port on the mouse and the other end to a USB power source (e.g., computer USB port, USB wall adapter). The mouse can be used while charging.

COMPATIBILITY

The TENMOS T12 Wireless Gaming Mouse is widely compatible with:

- Windows XP
- Windows Vista
- Windows 7/8/10
- Mac OS system

It is suitable for use with desktops, laptops, and personal computers.



Figure 6: Wide compatibility with various operating systems.

MAINTENANCE

- Keep the mouse clean by wiping it with a soft, dry cloth.
- Avoid exposing the mouse to extreme temperatures or direct sunlight.
- Do not disassemble the mouse, as this may void the warranty.

TROUBLESHOOTING

- **Mouse not responding:**

- Ensure the USB receiver is securely plugged into your computer.
- Check if the mouse is turned on using the switch on the bottom.
- Recharge the mouse if the battery is low.
- Try plugging the USB receiver into a different USB port.

- **Cursor movement is erratic:**
 - Ensure the mouse is used on a clean, flat surface.
 - Adjust the DPI settings to a lower sensitivity if the cursor is too fast.

- **LED lights not working:**
 - Check the LED light switch on the bottom of the mouse to ensure it is in the ON position.

SPECIFICATIONS

| | |
|--------------------------------------|--|
| Product Dimensions | 4.9 x 2.5 x 1.7 inches |
| Item Weight | 5.3 ounces |
| Model Number | T1205 |
| Batteries | 1 Product Specific battery (included) |
| Connectivity Technology | 2.4G Wireless (USB Receiver) |
| Movement Detection Technology | Optical |
| Special Features | Ergonomic Design, LED Lights, Rechargeable, Silent Click |

Ergonomic Design

— For comfortable hand feeling

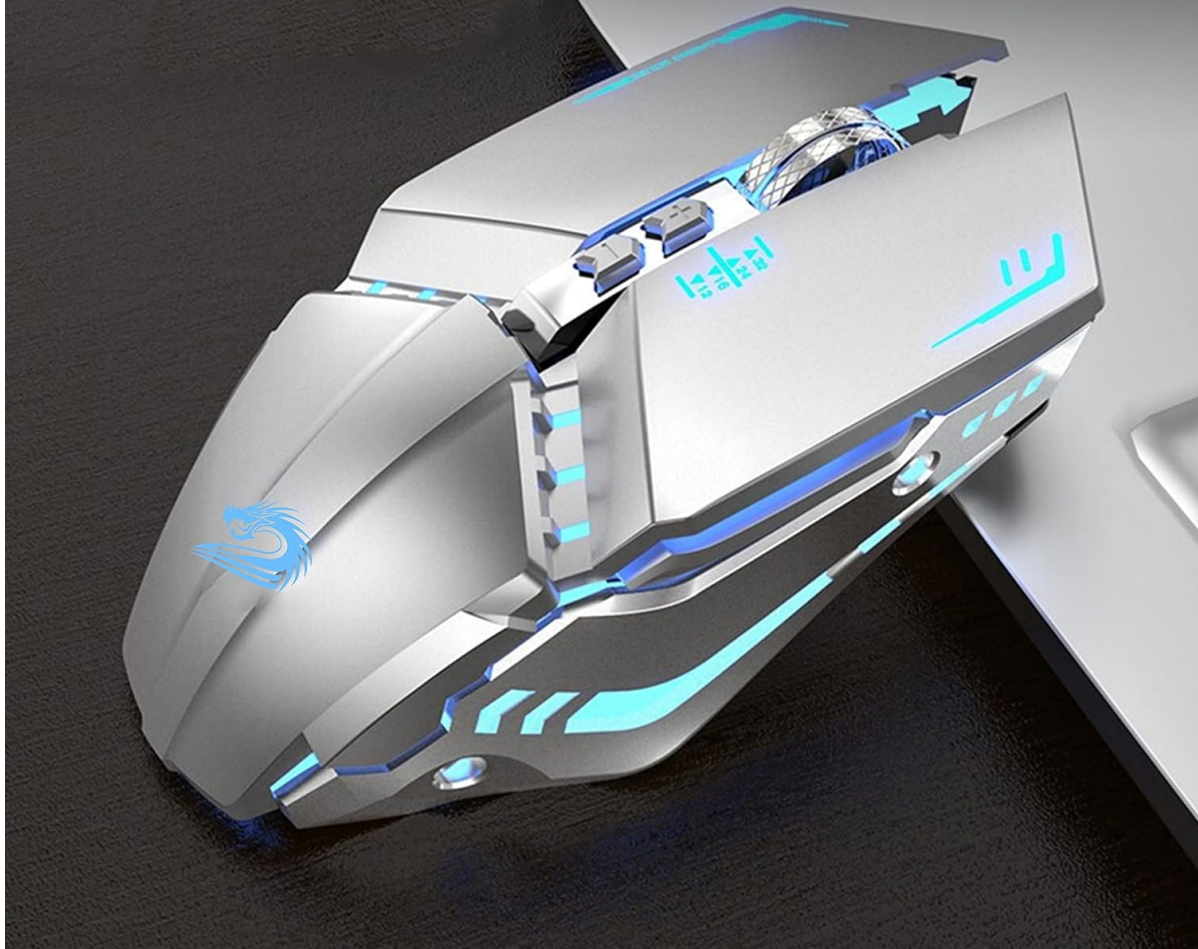


Figure 7: Physical dimensions of the TENMOS T12 Wireless Mouse.

WARRANTY AND SUPPORT

For warranty information or technical support, please refer to the contact details provided with your purchase or visit the official TENMOS website. Keep your purchase receipt for warranty claims.