

Bluedio HI

Bluedio Hurricane-HI Wireless Headphones User Manual

Model: HI
Brand: Bluedio

1. INTRODUCTION

Thank you for choosing the Bluedio Hurricane-HI Wireless Headphones. These true wireless earbuds feature advanced Bluetooth V5.0 technology, delivering a stable connection and high-fidelity sound. With innovative face recognition technology for music control and a portable charging case, the Hurricane-HI offers a convenient and immersive audio experience for sports, running, and daily use.

2. PACKAGE CONTENTS

Please check the package contents to ensure all items are present:

- Bluedio Hurricane-HI True Wireless Earbuds (Left and Right)
- Wireless Charging Case
- USB Charging Cable
- User Manual (This Document)
- Multiple sizes of ear tips (typically S, M, L)



Image: Bluedio Hurricane-HI Wireless Earbuds securely placed within their charging case.

3. PRODUCT OVERVIEW

Familiarize yourself with the components of your Bluedio Hurricane-HI earbuds and charging case.

Structural Sketch

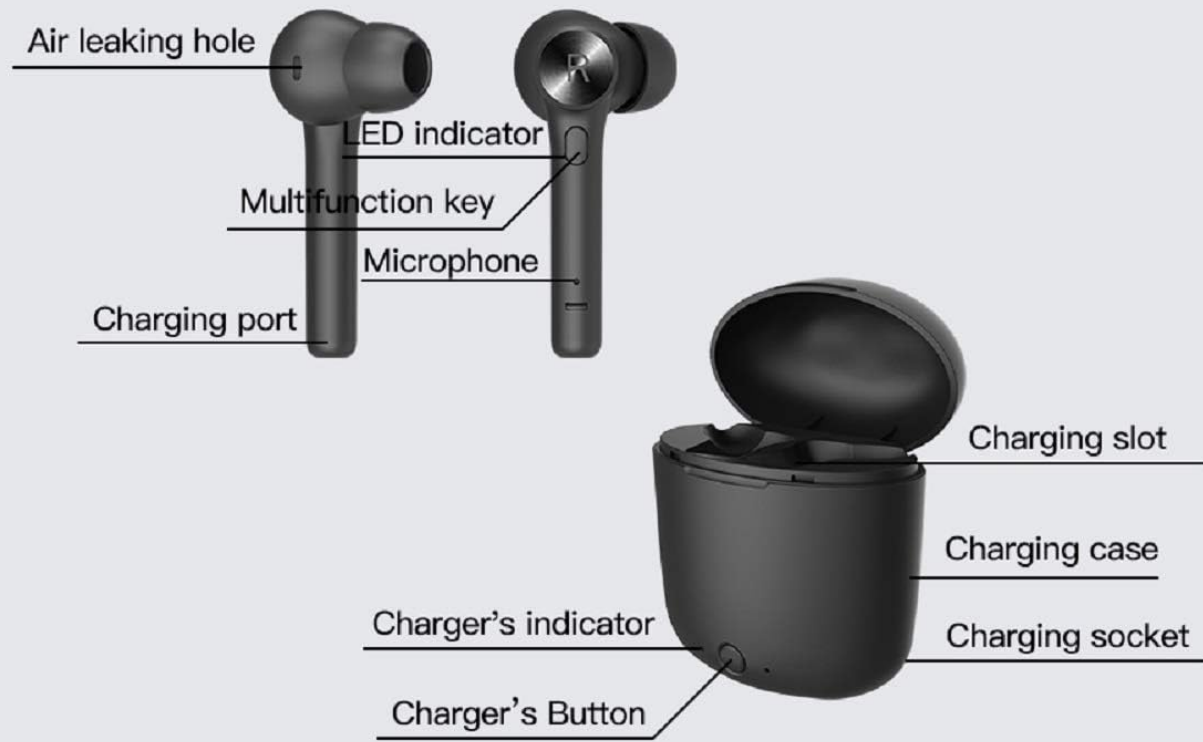


Image: Detailed diagram showing the various parts of the Bluedio Hurricane-HI earbuds and charging case, including the air leaking hole, LED indicator, multi-function key, microphone, charging port on the earbuds, and the charging slot, charging case, charger's indicator, charger's button, and charging socket on the case.

Earbud Components:

- **Air leaking hole:** For acoustic design.
- **LED indicator:** Displays status (pairing, charging, connected).
- **Multi-function key:** Controls playback, calls, and power.
- **Microphone:** For voice calls.
- **Charging port:** Connects to the charging case.

Charging Case Components:

- **Charging slot:** Holds and charges the earbuds.
- **Charging case:** Stores and recharges the earbuds.
- **Charger's indicator:** Shows charging status of the case.
- **Charger's Button:** Activates charging or checks battery status.
- **Charging socket:** For connecting the USB charging cable to recharge the case.

4. SETUP

4.1. Charging the Earbuds and Charging Case

Before first use, fully charge both the earbuds and the charging case.

1. Place the earbuds into the charging case. Ensure they are correctly seated in their respective slots (L for left, R for right).
2. Connect the USB charging cable to the charging socket on the case and plug the other end into a USB power source (e.g., wall adapter, computer USB port).
3. The charger's indicator on the case will show charging status.
4. Charging time for earbuds is approximately 1 hour. The charging case takes approximately 2 hours to fully charge.

4.2. One-Step Pairing

The Hurricane-HI earbuds feature an automated pairing system for ease of use.

1. Ensure your device's Bluetooth is turned on.
2. Take both the left and right earbuds out of the charging case. They will automatically power on and connect to each other.
3. On your device, search for Bluetooth devices and select "Hurricane-HI" from the list.
4. Once connected, you will hear a confirmation prompt, and the earbud LED indicators will change status (e.g., turn off or flash slowly).

Note: If pairing fails, place the earbuds back into the case, close the lid, wait a few seconds, and then repeat the steps.

5. OPERATING INSTRUCTIONS

5.1. Basic Controls (Multi-function Key)

The multi-function key on each earbud allows for various controls:

- **Power On:** Take out of charging case or press and hold the multi-function key for 3 seconds.
- **Power Off:** Place into charging case or press and hold the multi-function key for 5 seconds.
- **Play/Pause Music:** Single press the multi-function key.
- **Next Track:** Double press the multi-function key on the Right earbud.
- **Previous Track:** Double press the multi-function key on the Left earbud.
- **Answer/End Call:** Single press the multi-function key during an incoming call.
- **Reject Call:** Press and hold the multi-function key for 2 seconds during an incoming call.
- **Activate Voice Assistant:** Triple press the multi-function key.

5.2. Face Recognition Technology Control

The Hurricane-HI earbuds feature an intelligent face recognition sensor for automatic music playback control. The right earbud is equipped with this feature.

Face recognition: remove the headset, music stops

(Right ear piece is regarded as the main one with face recognition feature)

The built-in touch sensor chip intelligently senses the wearing status. Remove the headset, music stops automatically immediately. The melody sounded again when the headset is put on. Enjoy every frame of sound in your ears; increase the hours of usage.

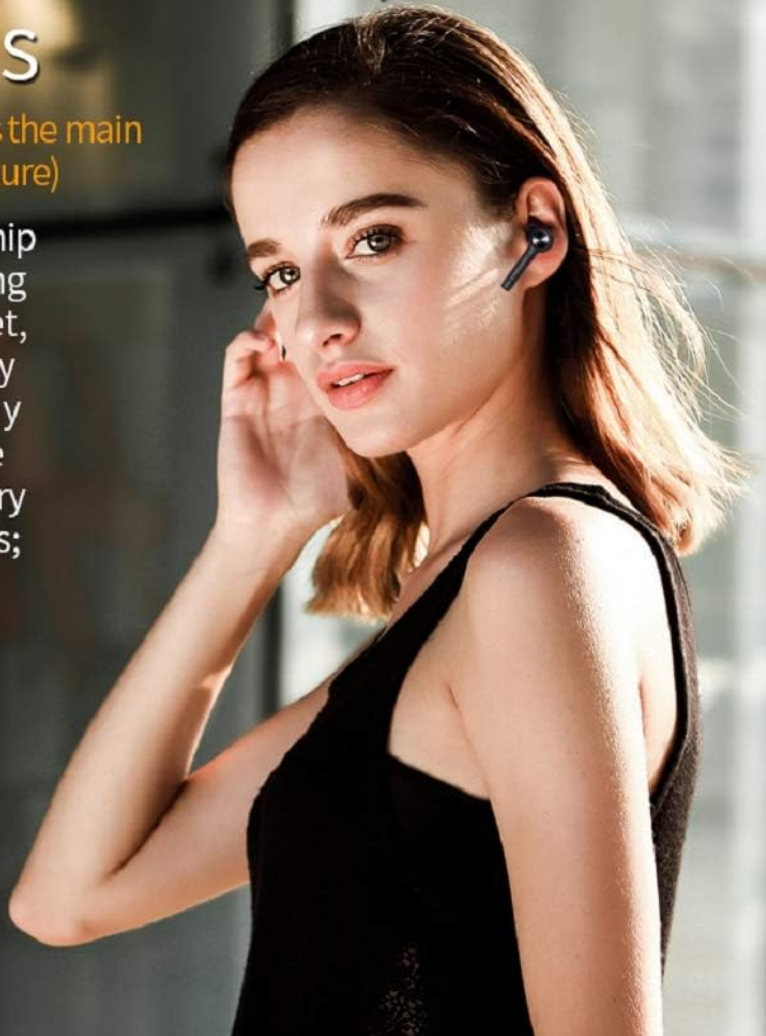


Image: A woman wearing the Bluedio Hurricane-HI earbud, illustrating how removing the right earbud automatically pauses music, and wearing it again resumes playback. This highlights the intelligent touch sensor chip.

- When you remove the right earbud from your ear, music playback will automatically pause.
- When you put the right earbud back into your ear, music playback will automatically resume.

This feature enhances convenience and helps conserve battery life.

6. SOUND QUALITY

The Hurricane-HI earbuds are engineered for HIFI sound quality, providing a rich and balanced audio experience.

Black technology new forces

The optimized combination of two newly designed loudspeakers with $\phi 13$ mm and high quality units of moving coil, together with a smooth circuit carries a high quality medium for a full and wide sound scale and a more balanced and powerful medium and high frequency. The voice is pure and more pleasant.

13
mm

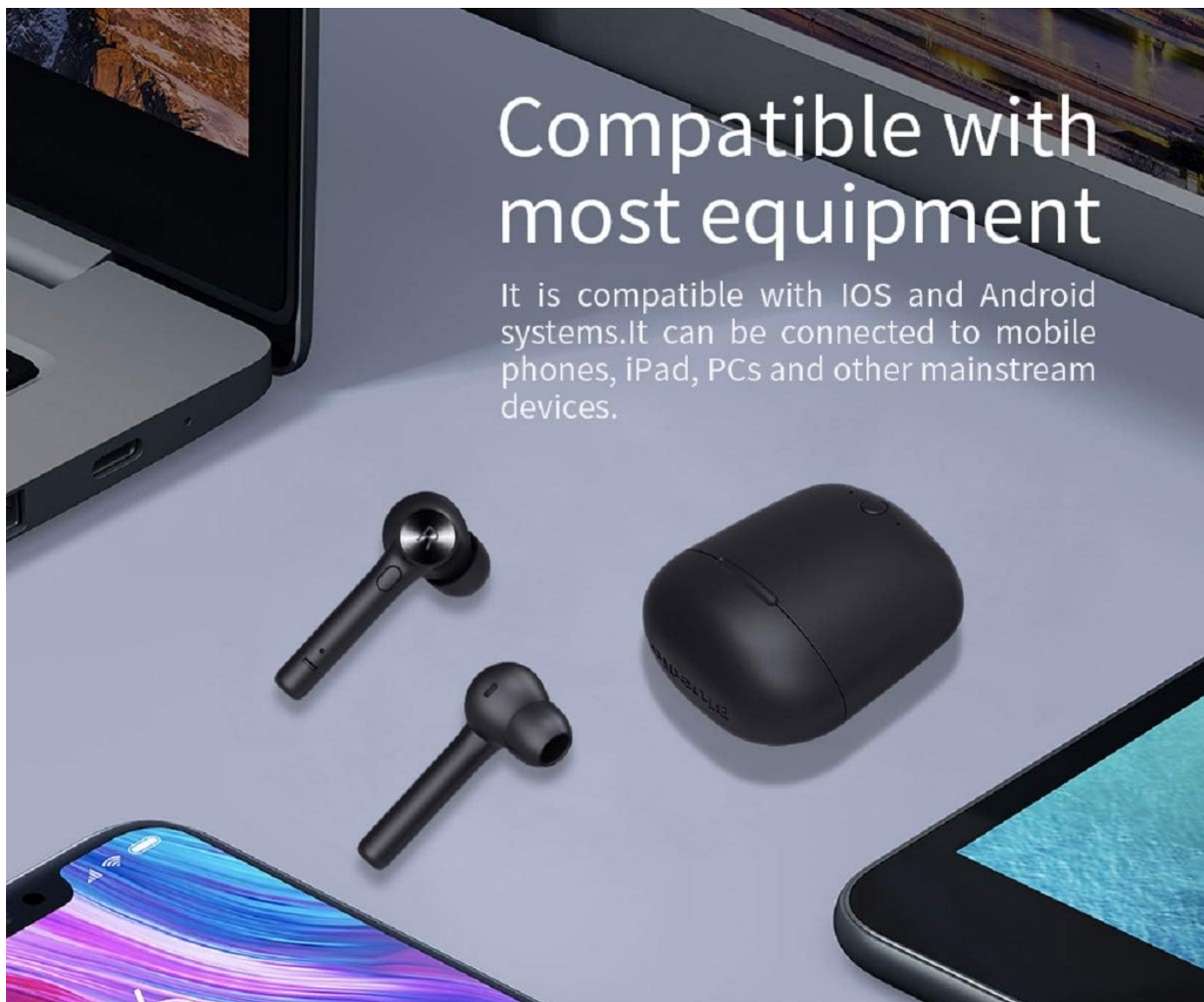


Image: An exploded view diagram of the Bluedio Hurricane-HI earbud, highlighting the 13mm dynamic driver and internal components, illustrating the advanced acoustic design for high-quality sound.

They feature optimized 13mm dynamic drivers and high-quality diaphragms, combined with a smooth circuit design, to create a wide sound field with balanced medium and high frequencies, ensuring pure and natural audio reproduction.

7. COMPATIBILITY

The Bluedio Hurricane-HI headphones are designed for broad compatibility.



Compatible with most equipment

It is compatible with IOS and Android systems. It can be connected to mobile phones, iPad, PCs and other mainstream devices.

Image: The Bluedio Hurricane-HI earbuds and charging case shown alongside a laptop, smartphone, and tablet, illustrating their compatibility with a wide range of Bluetooth-enabled devices.

They are compatible with most Bluetooth-enabled devices, including iOS and Android smartphones, tablets, laptops, desktops, and gaming consoles.

8. BATTERY LIFE & CHARGING

The Hurricane-HI earbuds and charging case provide extended listening time.

- **Earbud Playback Time:** Up to 6.25 hours on a single charge.
- **Charging Case Capacity:** 600mAh, providing up to 4 full recharges for the earbuds.
- **Total Playback Time with Case:** Approximately 20 hours.
- **Earbud Charging Time:** Approximately 1 hour.
- **Charging Case Charging Time:** Approximately 2 hours.

Always ensure the charging case is adequately charged to keep your earbuds ready for use.

9. MAINTENANCE & CARE

To ensure the longevity and optimal performance of your Bluedio Hurricane-HI headphones, follow these care guidelines:

- **Cleaning:** Regularly clean the earbuds and charging case with a soft, dry, lint-free cloth. Do not use abrasive cleaners or solvents.
- **Water Resistance:** The earbuds have a waterproof rating. However, avoid prolonged exposure to water or

submersion. Dry them thoroughly if they get wet.

- **Storage:** When not in use, store the earbuds in their charging case to protect them and keep them charged. Store in a cool, dry place away from direct sunlight and extreme temperatures.
- **Avoid Impact:** Do not drop, hit, or expose the earbuds or case to strong impacts, as this can damage internal components.
- **Charging:** Use only the provided charging cable or a certified equivalent. Avoid overcharging.

10. TROUBLESHOOTING

If you encounter issues with your Bluedio Hurricane-HI headphones, refer to the following common solutions:

10.1. Earbuds Not Pairing with Each Other or Device

- Ensure both earbuds are fully charged.
- Place both earbuds back into the charging case, close the lid, wait 5 seconds, then take them out again to re-initiate pairing.
- Turn off Bluetooth on your device, then turn it back on.
- Forget/delete "Hurricane-HI" from your device's Bluetooth list and attempt to pair again.

10.2. No Sound or Low Volume

- Check the volume level on both your device and the earbuds.
- Ensure the earbuds are properly connected to your device.
- Clean any debris from the earbud speaker mesh.
- Try playing different audio sources to rule out a problem with the media file.

10.3. Charging Issues

- Ensure the charging cable is securely connected to both the case and the power source.
- Verify the power source is active.
- Clean the charging contacts on both the earbuds and inside the charging case with a dry cotton swab.
- Try a different USB cable or power adapter.

10.4. Face Recognition Feature Not Working

- Ensure the right earbud is clean and free of obstructions on its sensor area.
- Verify the earbud is properly seated in your ear.
- Restart the earbuds by placing them in the case and taking them out again.

11. SPECIFICATIONS

Feature	Specification
Model Name	Hurricane-HI
Bluetooth Version	5.0
Wireless Communication Technology	Bluetooth
Bluetooth Range	10 Meters
Frequency Response	20Hz - 20kHz
Impedance	32 Ohm
Earbud Battery Life	6.25 Hours
Earbud Charging Time	1 Hour
Carrying Case Battery Capacity	600mAh (approx. 60 hours average life)
Carrying Case Charging Time	2 Hours
Control Type	Call Control, Touch
Water Resistance Level	Waterproof
Item Weight	80 Grams (total, including case) / 2.82 ounces
Product Dimensions	2.36 x 1.46 x 2.66 inches
Included Components	Wireless Charging Case

12. WARRANTY AND SUPPORT

Bluedio products are manufactured to the highest quality standards. For warranty information, technical support, or customer service inquiries, please refer to the contact details provided on the product packaging or the official Bluedio website. Please retain your proof of purchase for warranty claims.