

Ruko F11PRO

Ruko F11PRO Drone User Manual

Model: F11PRO

Brand: Ruko

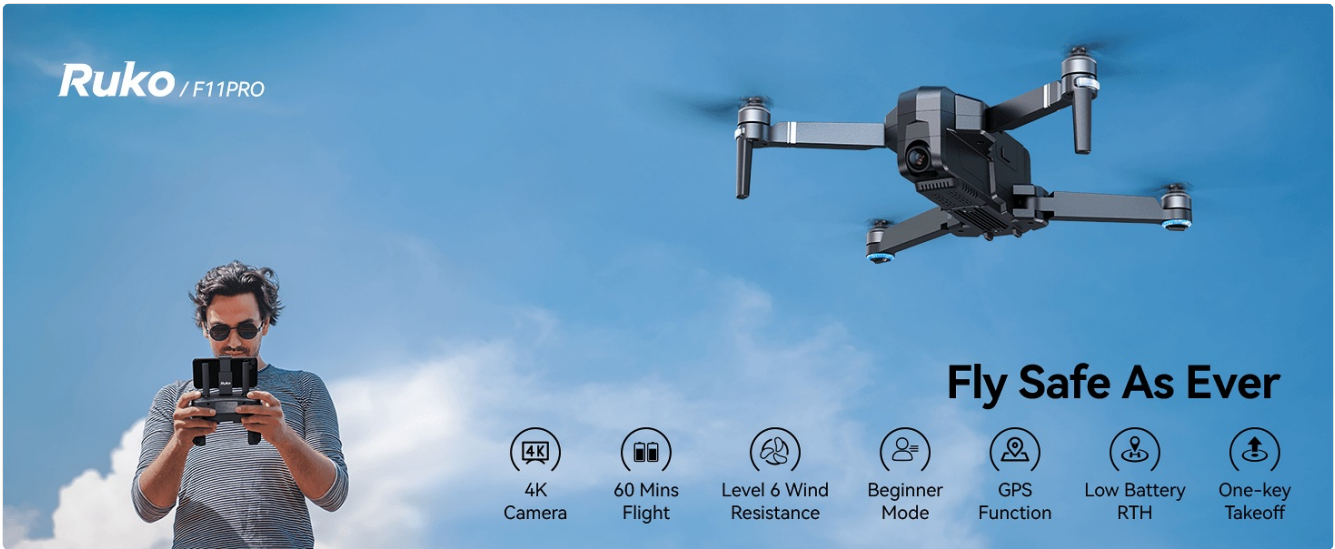
INTRODUCTION

The Ruko F11PRO is a high-performance 4K UHD camera drone designed for both beginners and experienced pilots. It features GPS auto return, a powerful brushless motor, and extended flight time, ensuring a stable and enjoyable flying experience. This manual provides essential information for safe operation and optimal performance of your Ruko F11PRO drone.

WHAT'S IN THE BOX

Verify all components are present before proceeding with setup:

- 1 x Ruko F11 Pro Drone
- 2 x 11.1V 2500mAH Battery (1 in the drone)
- 1 x Carrying Shell Case
- 1 x Transmitter (Remote Controller)
- 1 x Screwdriver
- 2 x Charging Cable (Charger not included)
- 4 x Extra Propeller Blades
- 1 x User Manual



This image displays the Ruko F11PRO drone, its remote controller, two batteries, a carrying case, charging cables, a screwdriver, and extra propeller blades, all included in the package.

SPECIFICATIONS

Feature	Detail
Brand	Ruko
Model Name	F11PRO
Age Range	Adult
Color	Black
Video Capture Resolution	2160P, 4K, 30fps
Effective Still Resolution	8.3 MP
Connectivity Technology	Wi-Fi
Skill Level	Beginner
Item Weight	1.15 pounds (18.34 Ounces)
Battery Capacity	2500 Milliamp Hours
Video Capture Format	MP4
Remote Control Technology	Remote Control
Control Type	Wi-Fi Control
Media Type	Micro SD
Maximum Range	500 Meters

Feature	Detail
Material	Aluminum
Battery Cell Composition	Lithium
Product Dimensions	6.9"L x 4.1"W x 3.15"H
Release Date	July 1, 2019

SETUP GUIDE

1. Unfolding the Drone

Gently unfold the drone arms until they click into place. Ensure all propellers are free from obstruction and securely attached.



The drone is shown with its arms extended and propellers in position, indicating it is ready for pre-flight checks.

2. Battery Installation and Charging

Insert the charged 11.1V 2500mAh battery into the drone's battery compartment. Connect the charging cable to the battery and a suitable USB power source (charger not included). A full charge provides up to 30 minutes of flight time per battery.



A close-up view of the drone's battery, showing its design and power indicator lights.



App
Tutorial



User
Manual



Learning
Video



Quick
Response



Accessories
Warranty



The drone battery connected to a charging cable, illustrating the charging process.

3. Remote Controller Setup

Install your smartphone onto the remote controller's phone holder. Connect the remote controller to your smartphone using the provided cable.

Smart Return to Home for Safty Fly

It will automatically return when the battery power is low, or the signal is lost. Convenient one-key return.



The remote controller with a smartphone mounted, ready for app-controlled flight.

4. App Installation and Connection

Download the official Ruko Pro app from your device's app store. Power on the drone and the remote controller. Connect your smartphone to the drone's Wi-Fi network (usually named "Ruko-F11PRO-XXXX"). Open the Ruko Pro app to establish connection and view the live feed.



A smartphone screen displaying the Ruko Pro app interface, showing flight data and controls.

5. GPS Calibration

For stable flight and GPS features like Auto Return Home, proper GPS calibration is crucial. Follow the on-screen instructions in the Ruko Pro app to calibrate the drone's compass and GPS before each flight. This typically involves rotating the drone horizontally and vertically.



An illustration showing the drone being rotated for GPS calibration, a critical step for accurate positioning.

OPERATING INSTRUCTIONS

Takeoff and Landing

Place the drone on a flat, open surface. Press the one-key takeoff button on the remote controller or within the app. The drone will automatically ascend to a safe height. To land, press the one-key landing button, and the drone will descend and land automatically.

Flight Controls

Use the joysticks on the remote controller to maneuver the drone:

- **Left Joystick:** Controls altitude (up/down) and yaw (rotate left/right).
- **Right Joystick:** Controls forward/backward and left/right movement.



A detailed view of the remote controller, highlighting the joysticks and control buttons.

Intelligent Flight Modes

The Ruko F11PRO offers several intelligent flight modes for enhanced creativity and ease of use:

- **Follow Me:** The drone automatically follows the remote controller or a designated subject.
- **Fly Around (Circle Fly):** The drone orbits a specified point of interest.
- **Point of Interest:** The drone flies around a chosen point, keeping it centered in the camera.
- **Hand Gesture Shots:** Perform specific hand gestures to trigger photo or video capture.

Realize Your Creative Flight

Advanced Features



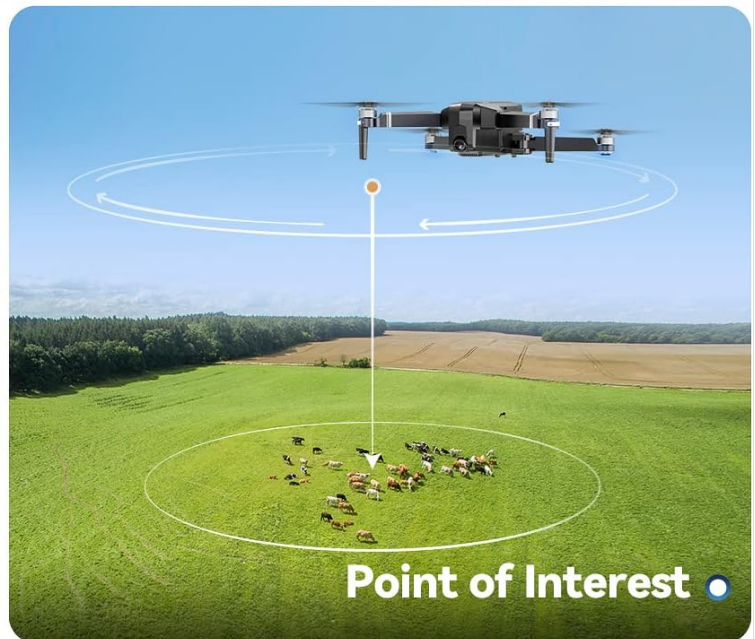
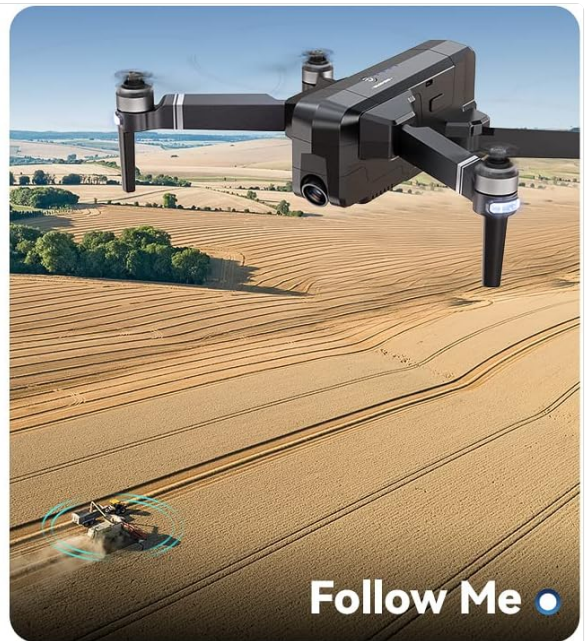
Point of Interest



Waypoint Fly



Follow Me



Visual representations of the drone executing various intelligent flight modes, including following a subject, flying along a set path, and circling a point of interest.

Camera Operation

The 4K UHD camera captures stunning photos and 2.9K/30fps videos. The camera features a 90° adjustable tilt and a 120° FOV lens for wide-angle shots.

- **Photo/Video Capture:** Use the dedicated buttons on the remote controller or the app interface to take photos or start/stop video recording.
- **Camera Angle Adjustment:** Adjust the camera's tilt using the scroll wheel on the remote controller.



4K Camera

Clear 4K camera, which can shoot 2.9K/30fps videos and 4K pictures for more details.



90° Adjustable Camera



120° FOV Lens



This image highlights the drone's 4K camera capabilities, including its adjustable angle and wide field of view.

SAFETY AND REGULATIONS

FAA Compliance and Remote ID

The Ruko F11PRO drone features an integrated Remote ID module, fully compliant with FAA regulations. No additional Remote ID module is required. Ensure you are aware of and comply with all local aviation regulations before flying.



Built-in Remote ID Module

FAA Remote ID Compliant

Tips:

Remote ID serial number is located on a sticker on the side of the drone.



A visual representation of the drone's internal Remote ID module, indicating its FAA compliance.

Flight Environment

Always choose an open area free of magnetic or radio interference, buildings, and other obstructions (maintain a distance greater than 32 feet). Avoid flying in strong winds (the drone can resist up to Level 6 wind).



Large and Sturdy Level 6 Wind Resistance

3.1inch

17.5inch

15.9inch

The drone is depicted flying outdoors, emphasizing its ability to withstand Level 6 winds due to its brushless motor.

Beginner Mode

The default Beginner Mode automatically sets up geofences, limiting flight distance and height to prevent loss. Once familiar with flight skills, you can disable Beginner Mode for extended range.



An illustration showing the drone's flight path restricted by a virtual geofence, a feature of Beginner Mode.

MAINTENANCE

Propeller Care

Regularly inspect propellers for any damage (cracks, bends, chips). Replace damaged propellers immediately using the provided screwdriver and extra blades.

Cleaning

Use a soft, dry cloth to clean the drone body and camera lens. Avoid using liquid cleaners or solvents.

Battery Storage

Store batteries in a cool, dry place away from direct sunlight and extreme temperatures. For long-term storage, charge batteries to approximately 50-60% capacity.

TROUBLESHOOTING

Drone Not Powering On

- Ensure the battery is fully charged and correctly inserted.

- Press and hold the power button for a few seconds.

Unable to Connect to App

- Verify the drone and remote controller are powered on.
- Check that your phone is connected to the drone's Wi-Fi network.
- Restart the app and try again.

GPS Signal Weak or Lost

- Ensure you are flying in an open area away from tall buildings or strong magnetic interference.
- Perform GPS calibration as described in the Setup Guide.
- If signal is lost during flight, the drone will auto-return to home (RTH) if GPS was locked at takeoff.

Up to 60 Minutes

Each battery provides 30 minutes of flight time, giving you a total of 60 minutes of flight time to get more fun.



The drone is shown returning to its takeoff point, illustrating the GPS Auto Return Home feature activated by low power or signal loss.

WARRANTY AND SUPPORT

Ruko offers a 30-day return or exchange policy and a 90-day free warranty for the F11PRO drone.

For any questions regarding product operation, troubleshooting, or warranty claims, please contact Ruko Customer Service:

- **Phone:** +1 (888) 892-0155 (Mon-Fri: 8 AM to 2 AM (next day) PST, Sat-Sun: 8 AM to 5 PM (PST))
- **Email:** service@rukotoy.com

Tribute to The Classics

Exquisite Design, Smooth Appearance








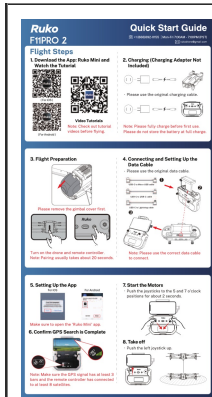
This image provides contact details for Ruko customer support, including phone number and email address, along with operating hours.

OFFICIAL PRODUCT VIDEOS

Currently, there are no official product videos from the seller available for embedding in this manual. Please refer to the written instructions and diagrams for guidance.

Related Documents - F11PRO

 <p>The cover of the Ruko F11 PRO User Manual v2.0 features the Ruko logo at the top left, a small icon in the top right, and a line drawing of the drone in the center. The text 'User Manual v2.0' is at the top, and 'F11 PRO' is at the bottom.</p>	<p>Ruko F11 PRO User Manual v2.0</p> <p>This user manual provides comprehensive instructions and safety guidelines for the Ruko F11 PRO drone, covering setup, flight operations, intelligent flight modes, camera usage, and troubleshooting.</p>
 <p>The cover of the Ruko F11PRO Drone User Manual: Safety, Operation, and Features features the Ruko logo at the top left, a small icon in the top right, and a line drawing of the drone in the center. The text 'User Manual v3.0' is at the top, and 'F11PRO' is at the bottom.</p>	<p>Ruko F11PRO Drone User Manual: Safety, Operation, and Features</p> <p>Explore the Ruko F11PRO drone with this comprehensive user manual. Learn about flight safety, operational procedures, intelligent flight modes, battery care, and troubleshooting for your Ruko F11PRO flying camera.</p>
 <p>The cover of the Ruko F11PRO GPS Folding Drone User Manual features the Ruko logo at the top left, a small icon in the top right, and a line drawing of the drone in the center. The text 'F11PRO (GPS) Folding Drone' is at the top, and 'ULTRAPORTABLE AND FOLDABLE' is at the bottom.</p>	<p>Ruko F11PRO GPS Folding Drone User Manual</p> <p>Comprehensive user manual for the Ruko F11PRO GPS Folding Drone, covering setup, flight operations, app functions, specifications, and troubleshooting. Learn about assembly, charging, flight preparation, advanced features like Way Point Flight and Point of Interest, camera functions, and common problem solutions.</p>
 <p>The cover of the Ruko U11 Pro Drone User Manual features the Ruko logo at the top left, a small icon in the top right, and a line drawing of the drone in the center. The text 'User Manual v3.0' is at the top, and 'U11 PRO' is at the bottom.</p>	<p>Ruko U11 Pro Drone User Manual</p> <p>Comprehensive user manual for the Ruko U11 Pro drone, covering setup, flight operations, app features, safety guidelines, and specifications. Learn how to fly your drone safely and effectively.</p>
 <p>The cover of the Ruko F11PRO 2 User Manual features the Ruko logo at the top left, a small icon in the top right, and a line drawing of the drone in the center. The text 'User Manual v1.0' is at the top, and 'F11PRO 2' is at the bottom.</p>	<p>Ruko F11PRO 2 User Manual</p> <p>Comprehensive user manual for the Ruko F11PRO 2 drone, covering setup, flight operations, features, safety, and troubleshooting.</p>



[Ruko F11PRO 2 Drone Quick Start Guide](#)

A quick start guide for the Ruko F11PRO 2 drone, covering flight steps, charging, setup, precautions, and return rules.