

## NICREW N14582

# NICREW ClassicLED G2 Aquarium Lighting User Manual

Model: N14582

## PRODUCT OVERVIEW

The NICREW ClassicLED G2 Aquarium Lighting is a versatile and efficient LED lamp designed for freshwater aquariums. Featuring a second-generation design, it offers increased brightness and more LEDs compared to its predecessor. Its IP67 waterproof rating ensures durability and suitability for various aquarium setups. The light includes adjustable white and blue LEDs, a built-in timer, and a gradual sunrise/sunset simulation to provide optimal lighting conditions for your aquatic environment.

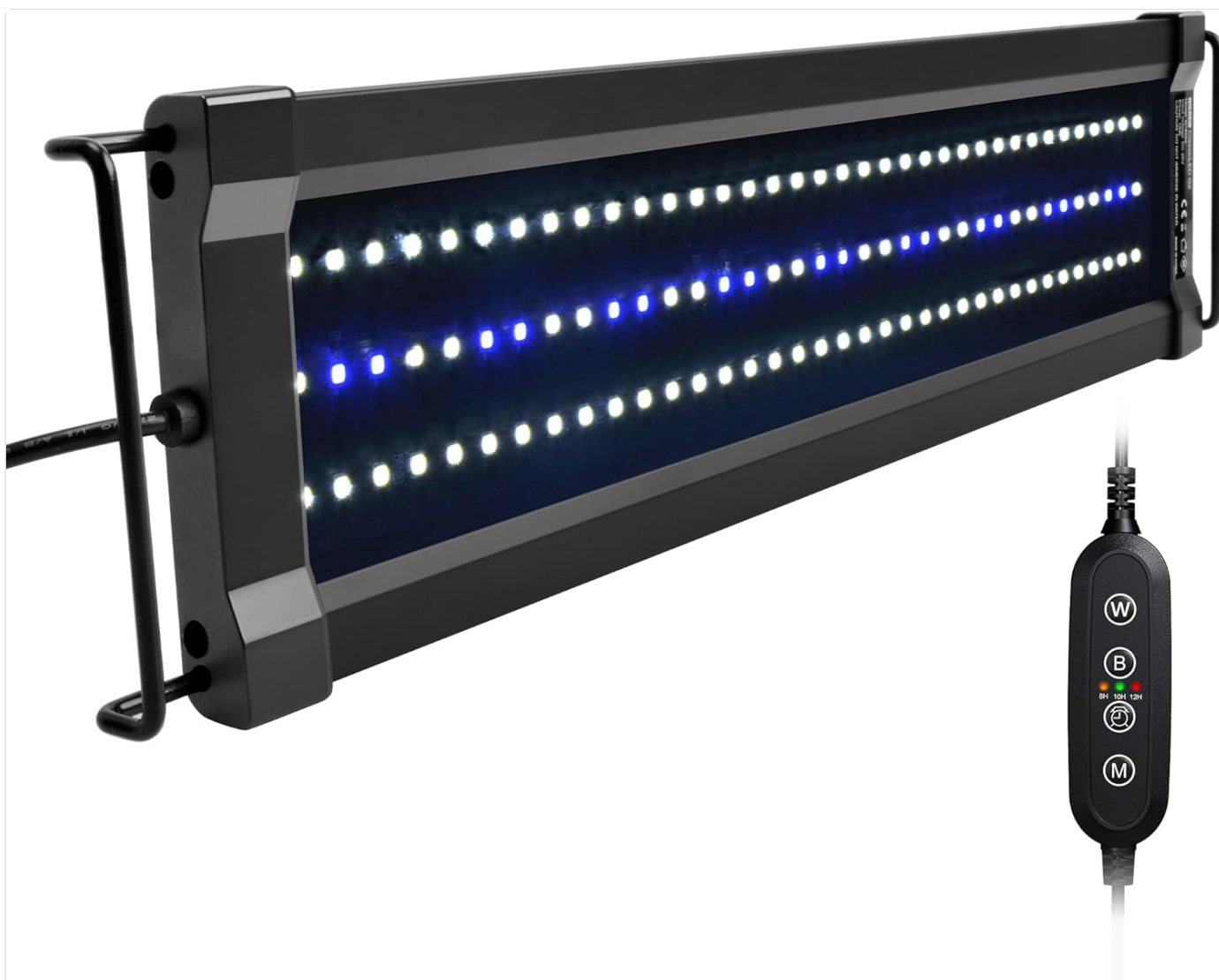


Image: The NICREW ClassicLED G2 Aquarium Lighting unit with its inline controller, showcasing the sleek black design and the arrangement of white and blue LEDs.

## KEY FEATURES

---

- **Enhanced Brightness:** Features more LEDs and is 50% brighter than the previous generation, ideal for plants requiring medium to low light intensity.
- **Independent LED Control:** Brightness of white and blue LEDs can be adjusted separately or simultaneously.
- **Adjustable Mounting:** Flexible rails allow use on aquariums ranging from 45 cm to 60 cm in width.
- **Efficient Heat Dissipation:** Specially designed aluminum housing maximizes surface area for effective heat rejection, extending product lifespan.
- **IP67 Waterproof:** Suitable for use with or without an aquarium cover, providing robust protection against water ingress.
- **Integrated Timer:** Built-in timer with 8, 10, and 12-hour options for automated lighting cycles.
- **Sunrise/Sunset Simulation:** 15-minute gradient transition for sunrise and sunset to prevent startling fish.

## SETUP INSTRUCTIONS

---

### Package Contents:

- NICREW ClassicLED G2 Aquarium Lighting Unit
- Adjustable Mounting Brackets (2x)
- Power Adapter with Inline Controller

### Installation Steps:

1. **Unpack:** Carefully remove all components from the packaging. Inspect for any damage.
2. **Attach Mounting Brackets:** Slide the adjustable mounting brackets onto each end of the light fixture. Ensure they are securely fitted.
3. **Position on Aquarium:** Place the light fixture on top of your aquarium. Adjust the extendable brackets to fit the width of your tank (45-60 cm). Ensure the light is centered and stable.
4. **Connect Power:** Connect the power adapter cable to the light fixture's input port. Ensure the connection is firm.
5. **Plug In:** Plug the power adapter into a suitable electrical outlet. Do not plug in until the light is securely positioned over the aquarium.

# Aluminum Alloy Housing

Maximize surface area for high performance  
in heat rejection

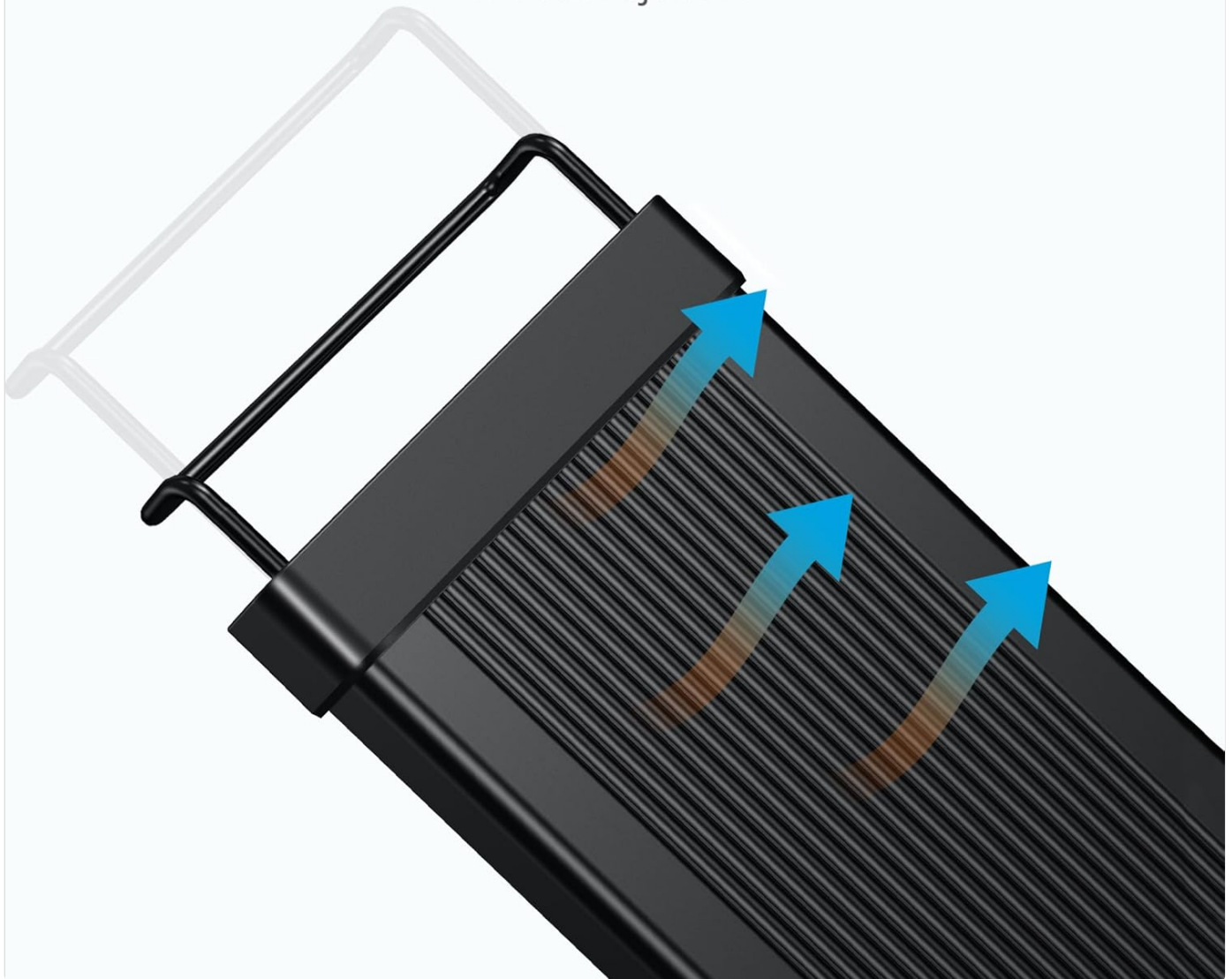


Image: Close-up view of the aluminum alloy housing, highlighting its design for efficient heat dissipation, which contributes to the light's longevity.

## OPERATING INSTRUCTIONS

---

The NICREW ClassicLED G2 features an inline controller for easy operation. Familiarize yourself with the buttons:

**(W) Button:** Adjusts the brightness of the white LEDs.

**(B) Button:** Adjusts the brightness of the blue LEDs.

**(Timer Icon) Button:** Cycles through timer options (8H, 10H, 12H).

**(Power Icon) Button:** Turns the light ON/OFF.

**(M) Button:** Switches between daylight mode and moonlight mode.

### Basic Operation:

1. **Power On/Off:** Press the **Power Icon** button to turn the light on or off.
2. **Adjust White LED Brightness:** Press the **(W)** button repeatedly to cycle through different brightness levels for the white LEDs.

3. **Adjust Blue LED Brightness:** Press the **(B)** button repeatedly to cycle through different brightness levels for the blue LEDs.
4. **Switch Modes:** Press the **(M)** button to switch between full spectrum daylight mode and blue-only moonlight mode.

### Using the Built-in Timer:

The integrated timer allows you to set automatic on/off cycles for 8, 10, or 12 hours. The light will gradually brighten at the start of the cycle and dim at the end (15-minute gradient).

1. **Activate Timer:** With the light on, press the **Timer Icon** button. The indicator light will show the selected duration (e.g., 8H, 10H, 12H).
2. **Set Cycle:** The light will now operate for the selected duration and then turn off. It will automatically turn on at the same time the next day.
3. **Deactivate Timer:** To turn off the timer, press the **Timer Icon** button until no timer duration is indicated, or simply turn the light off manually.

## Timer for 8, 10 and 12 Hour on Options

Set it, and forget it!



Image: The inline controller, showing the buttons for adjusting white and blue LEDs, cycling through timer options (8H, 10H, 12H), power on/off, and moonlight mode.

# Color Temperature Adjustable

Dimming of **white** and **blue** LEDs independently

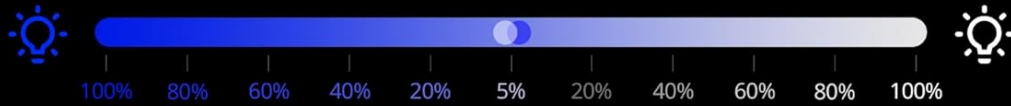


Image: Illustrates the independent dimming capability of white and blue LEDs, allowing for adjustable color temperature to suit different aquarium needs.



# 15-minute Gradient Sunrise/Sunset

Avoid startling your fish



Image: Depicts the 15-minute gradient sunrise/sunset feature, showing the light gradually illuminating an aquarium to avoid startling fish.

## MAINTENANCE

---

Regular maintenance ensures optimal performance and longevity of your NICREW ClassicLED G2 lighting unit.

- **Cleaning:** Periodically wipe the light fixture with a soft, damp cloth to remove dust, water spots, or algae buildup. Ensure the light is unplugged before cleaning. Do not use abrasive cleaners or solvents.
- **Inspection:** Regularly check the power cord and adapter for any signs of damage, fraying, or kinks. If any damage is found, discontinue use immediately and contact customer support.
- **Water Contact:** While the unit is IP67 waterproof, avoid submerging the power adapter or controller. Ensure the connections remain dry.

## TROUBLESHOOTING

---

Problem	Possible Cause	Solution
Light does not turn on.	<ul style="list-style-type: none"><li>Power adapter not plugged in.</li><li>Power outlet is not working.</li><li>Cable or adapter is damaged.</li></ul>	<ul style="list-style-type: none"><li>Ensure the power adapter is securely plugged into both the light and the outlet.</li><li>Test the outlet with another device.</li><li>Inspect the cable and adapter for damage. If damaged, do not use and contact support.</li></ul>
Light flickers or dims unexpectedly.	<ul style="list-style-type: none"><li>Loose connection.</li><li>Power supply issue.</li><li>Unit overheating.</li></ul>	<ul style="list-style-type: none"><li>Check all connections to ensure they are secure.</li><li>Ensure the power adapter is receiving stable power.</li><li>Ensure the light fixture has adequate ventilation and is not covered.</li></ul>
Timer function not working correctly.	<ul style="list-style-type: none"><li>Timer not set properly.</li><li>Power interruption.</li></ul>	<ul style="list-style-type: none"><li>Re-set the timer by pressing the Timer button until the desired duration is indicated.</li><li>Ensure continuous power supply. Power interruptions will reset the timer.</li></ul>

SPECIFICATIONS

Attribute	Value
Brand	NICREW
Model Number	N14582
Product Dimensions	45 x 13 x 8 cm (17.7 x 5.1 x 3.1 inches)
Item Weight	950 g (2.09 lbs)
Color	Black
Material	Aluminum
Finish Type	Painted
Number of Lights (LEDs)	108
Wattage	15 Watts
Voltage	120 Volts
Special Features	Waterproof (IP67), Adjustable Brightness and Color, Multiple Lighting Times, Water Resistant
Power Source	Corded Electric
Switch Style	Push Button

Attribute	Value
Batteries Required	No
Energy Efficiency Rating	F ( <a href="#">View EPREL Database</a> )

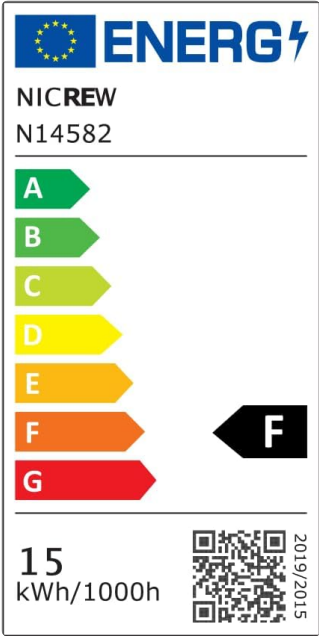


Image: The EU Energy Efficiency Label for the NICREW ClassicLED G2, indicating an 'F' rating and 15 kWh/1000h energy consumption.

## WARRANTY AND SUPPORT

### Warranty Information:

This NICREW ClassicLED G2 Aquarium Lighting unit comes with a **12-month warranty** from the date of purchase. This warranty covers manufacturing defects and issues arising from normal use. Please retain your proof of purchase for warranty claims.

### Customer Support:

For any questions, technical assistance, or warranty claims, please contact NICREW customer support. Our mission is to make fish keeping easier and more enjoyable, and we are dedicated to helping you keep your aquatic friends happy and healthy.

Please refer to the contact information provided on the product packaging or the official NICREW website for the most up-to-date support channels.



Image: An illustration indicating a 12-month hassle-free warranty and 24-hour friendly customer service, reflecting NICREW's commitment



to support.