

KRUPS SS-202895

KRUPS SS-202895 Permanent Coffee Filter Instruction Manual

Model: SS-202895

1. INTRODUCTION

This manual provides instructions for the proper use and maintenance of your KRUPS SS-202895 Permanent Coffee Filter. Designed for specific KRUPS coffee maker models, this reusable filter offers an alternative to disposable paper filters. Please read these instructions carefully before first use and retain them for future reference.

2. PRODUCT OVERVIEW

The KRUPS SS-202895 Permanent Coffee Filter is a basket-style filter designed for use in compatible drip coffee makers. It features a durable mesh construction that allows for optimal coffee extraction while preventing grounds from entering your brewed coffee. The integrated handle facilitates easy placement and removal.



Figure 1: Front view of the KRUPS SS-202895 Permanent Coffee Filter, showing the mesh and handle.



Figure 2: Side view of the permanent coffee filter, highlighting the basket shape and handle attachment.



Figure 3: Angled view of the permanent coffee filter, illustrating the fine mesh material.

3. COMPATIBILITY

This permanent coffee filter is specifically designed for the following KRUPS coffee maker models:

- EC311050/87A
- EC311050/87B
- EC312050/87A
- EC313050/87A
- EC314050/87A
- EC314050/87B
- EC411050/87A
- EC412050/87A
- EC414050/87A
- EC415050/87A
- ET351050/87A
- ET353050/87A
- ET451050/87A

Using this filter with incompatible models may result in improper fit or brewing performance.

4. SETUP

1. **Unpack:** Carefully remove the permanent coffee filter from its packaging.
2. **Initial Cleaning:** Before first use, wash the filter thoroughly with warm, soapy water. Rinse completely to remove any residue and allow it to air dry.
3. **Placement:** Open the filter basket compartment of your compatible KRUPS coffee maker. Insert the permanent filter into the filter basket, ensuring it sits securely and flush. The handle should be positioned for easy access.

5. OPERATING INSTRUCTIONS

To brew coffee using your permanent filter:

1. **Add Coffee Grounds:** Place the desired amount of ground coffee into the permanent filter. Refer to your coffee maker's manual for recommended coffee-to-water ratios. Ensure the coffee grounds do not exceed the maximum fill line, if present, to prevent overflow.
2. **Close Filter Basket:** Close the filter basket compartment of your coffee maker.
3. **Brew Coffee:** Proceed with brewing coffee according to your specific KRUPS coffee maker's instructions.
4. **After Brewing:** Once brewing is complete and the coffee has cooled slightly, carefully remove the filter from the coffee maker using its handle. Discard the used coffee grounds.

6. MAINTENANCE AND CLEANING

Regular cleaning of your permanent filter is essential for optimal performance and taste.

- **Daily Cleaning:** After each use, rinse the filter under running water to remove all coffee grounds. Use a soft brush if necessary to dislodge any stubborn particles from the mesh.
- **Deep Cleaning:** Periodically, or if you notice a buildup of coffee oils or a change in coffee taste, wash the filter with warm, soapy water. A mild dish soap is suitable. Ensure to rinse thoroughly to remove all soap residue.
- **Drying:** Allow the filter to air dry completely before storing or reusing.
- **Dishwasher Safety:** Consult your coffee maker's manual or the filter's packaging for specific dishwasher safety information. Generally, hand washing is recommended to prolong the life of the mesh.

7. TROUBLESHOOTING

Problem	Possible Cause	Solution
Coffee grounds in brewed coffee.	<ul style="list-style-type: none">• Filter not seated correctly.• Too many coffee grounds used.• Coffee grounds too fine.	<ul style="list-style-type: none">• Ensure filter is securely placed in the basket.• Do not exceed the maximum fill line for coffee grounds.• Use a medium grind suitable for drip coffee makers.

Problem	Possible Cause	Solution
Slow brewing or overflow.	<ul style="list-style-type: none">• Filter mesh is clogged.• Too many coffee grounds used.	<ul style="list-style-type: none">• Clean the filter thoroughly to remove any buildup.• Reduce the amount of coffee grounds.
Weak coffee.	<ul style="list-style-type: none">• Not enough coffee grounds.• Coffee grounds too coarse.	<ul style="list-style-type: none">• Increase the amount of coffee grounds.• Use a finer grind, but avoid excessively fine grinds that can clog the filter.

8. SPECIFICATIONS


- Model:** SS-202895
- Brand:** KRUPS
- Material:** Durable mesh and plastic frame
- Shape:** Basket
- Number of Pieces:** 1
- Unit Count:** 1.0 Count
- Product Dimensions:** Approximately 5 x 5 x 4.5 inches (12.7 x 12.7 x 11.4 cm)
- Item Weight:** Approximately 1.13 ounces (32 grams)

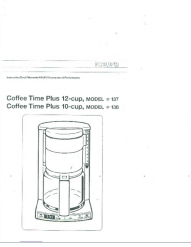



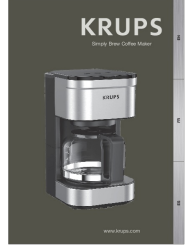
9. WARRANTY AND SUPPORT

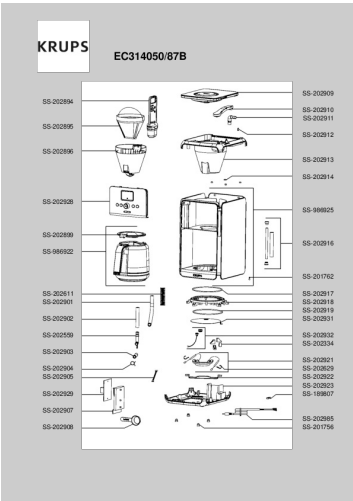
For information regarding warranty coverage or product support, please refer to the documentation included with your KRUPS coffee maker or visit the official KRUPS website. This permanent filter is an accessory, and its warranty may be covered under the main appliance's warranty or have a separate limited warranty. Keep your purchase receipt as proof of purchase.

For further assistance, you may contact KRUPS customer service through their official channels.

Related Documents - SS-202895

<div><div><div>ProAroma</div><div>NaturActiv</div></div><div></div></div>	<p>KRUPS ProAroma 12 Time Coffee Maker with NaturActiv Filter - User Manual & Features</p> <p>Comprehensive user manual for the KRUPS ProAroma 12 Time coffee maker, featuring the NaturActiv filter. Includes setup, operation, features, safety, cleaning, and warranty information for Model #453.</p>
--	---

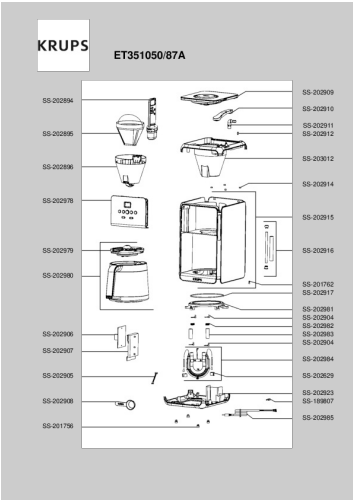
	<p>KRUPS Coffee Time Plus: User Manual, Features, and Warranty</p> <p>Comprehensive guide to the KRUPS Coffee Time Plus coffee maker, covering features, operation, programming, cleaning, and warranty information for models 136 and 137.</p>
	<p>KRUPS KM480 Filter Coffee Maker: User Manual and Instructions</p> <p>This comprehensive user manual provides detailed instructions for the KRUPS KM480 Filter Coffee Maker, covering setup, operation, cleaning, troubleshooting, and warranty information for optimal brewing.</p>
	<p>KRUPS Simply Brew™ 14 Cups* with Thermal Carafe User Manual</p> <p>User manual for the KRUPS Simply Brew™ 14 Cups* coffee maker (Model KM209D50). Learn about safety, brewing, maintenance, and settings for optimal coffee preparation.</p>
	<p>Krups Savoy EC415 Coffee Maker User Manual and Instructions</p> <p>Comprehensive user manual for the Krups Savoy EC415 coffee maker, covering setup, brewing, features, cleaning, troubleshooting, and warranty information. Learn how to use your coffee machine for optimal results.</p>
	<p>KRUPS Simply Brew Coffee Maker User Manual and Safety Instructions</p> <p>This comprehensive user manual for the KRUPS Simply Brew Coffee Maker provides essential safety guidelines, operating instructions for brewing coffee, cleaning and maintenance tips, and details on the KRUPS International Limited Guarantee. Learn how to use your coffee maker safely and effectively.</p>



[Krups EC314050/87B Savoy M2 Drip Coffee Maker Exploded View Parts Diagram](#)

An exploded view parts diagram for the Krups EC314050/87B Savoy M2 Drip Coffee Maker, listing all component part numbers for identification and replacement.

lang: [score:17](#) filesize: 18.88 K page_count: 1 document date: 2024-07-11



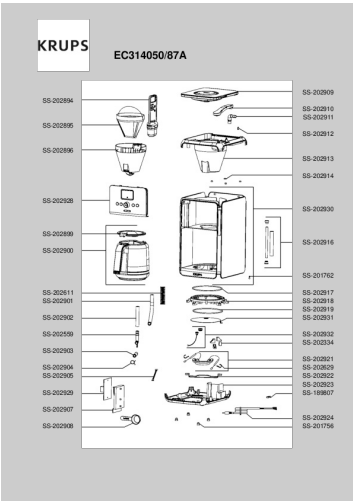
[\[pdf\]](#)

Download the exploded view KRUPS 12 Cup Savoy Programmable Black Thermal Coffee Maker

ET351050 explodedview 87A dam groupeseb m 9a54beb97c7a5680 original timestamp 20240726165251 |||

ET351050/87A SS-202894 **SS-202895** SS-202896 SS-202978 SS-202979 SS-202980 SS-202906 SS-202907 SS-202905 SS-202908 SS-201756 SS-202909 SS-202910 SS-202911 SS-202912 SS-203012 SS-202914 SS-202915 SS-202916 SS-201762 SS-202917 SS-202981 SS-202904 SS-202982 SS-202983 SS-202904 SS-202984 SS-202629 SS-202...

lang: [score:17](#) filesize: 18.21 K page_count: 1 document date: 2024-07-11



[\[pdf\]](#)

Download the exploded view KRUPS 12 Cup Savoy Programmable Digital Stainless Steel Coffee Maker

EC314050 explodedview 87A dam groupeseb m b5984d4baa9f2386 original timestamp 20240726165302 |||

EC314050/87A SS-202894 **SS-202895** SS-202896 SS-202928 SS-202899 SS-202900 SS-202611 SS-202901 SS-202902 SS-202559 SS-202903 SS-202904 SS-202905 SS-202929 SS-202907 SS-202908 SS-202909 SS-202910 SS-202911 SS-202912 SS-202913 SS-202914 SS-202930 SS-202916 SS-201762 SS-202917 SS-202918 SS-202919 SS-202...

lang: [score:17](#) filesize: 18.88 K page_count: 1 document date: 2024-07-11