

[Manuals.plus](#) /

› [VSDISPLAY](#) /

› VSDISPLAY 8" 1024x768 IPS LCD with Controller Board User Manual

VSDISPLAY HJ080IA-01E

VSDISPLAY 8" 1024x768 IPS LCD with Controller Board User Manual

Model: HJ080IA-01E

1. INTRODUCTION

This manual provides instructions for the VSDISPLAY 8-inch 1024x768 IPS LCD screen and its associated controller board. This display kit is designed for various applications, including integration with single-board computers like the Raspberry Pi, and other custom projects requiring a compact, high-resolution display.

2. PACKAGE CONTENTS

Verify that all the following components are included in your package:

- 1 × LCD Controller Board (Model: VS-TY2660H-V815)
- 1 × 8-inch HJ080IA-01E 1024x768 IPS LCD Screen
- 1 × USB Power Cable
- 1 × Keyboard with Cable (for OSD control)

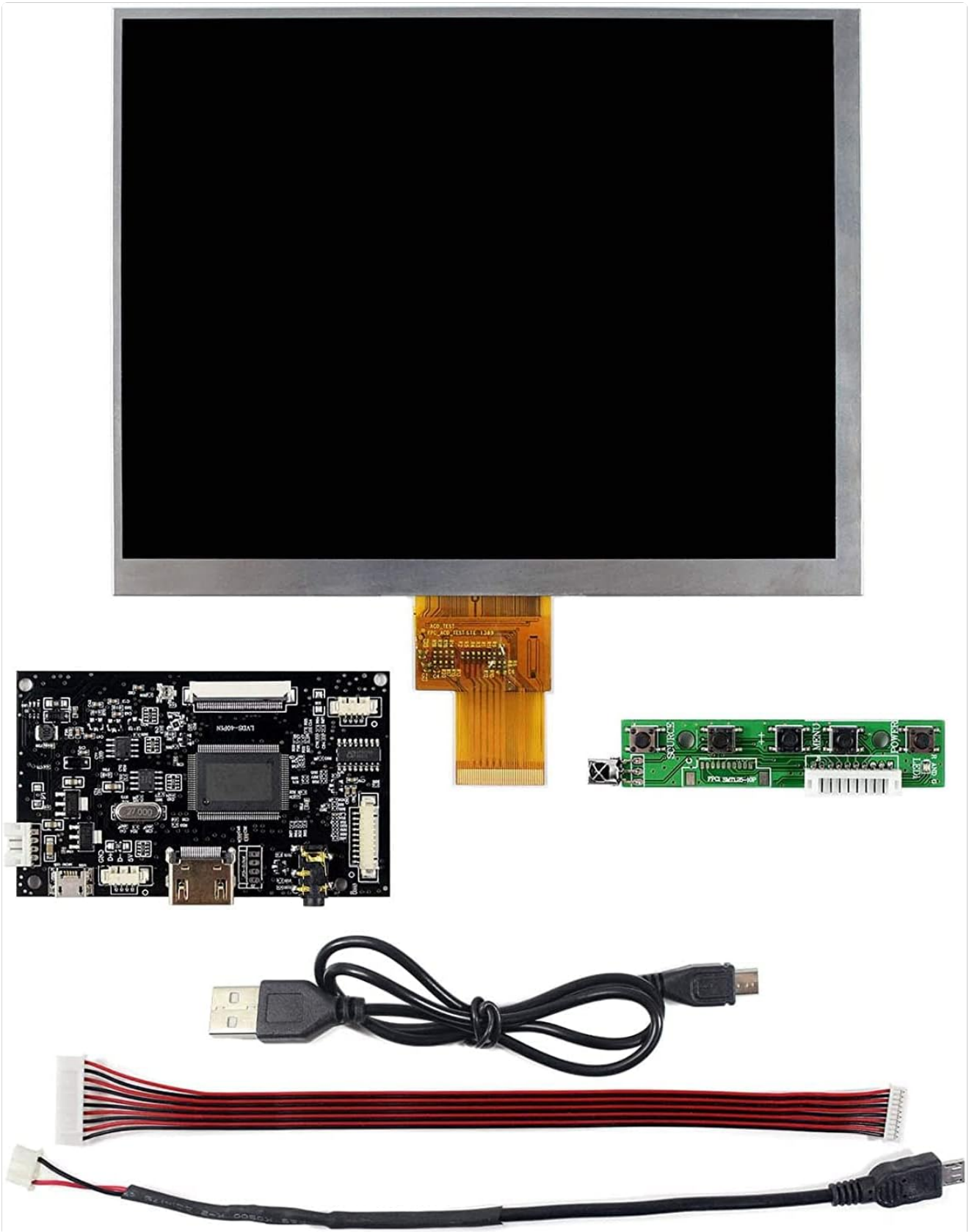


Figure 2.1: Complete VSDISPLAY 8-inch LCD Kit components.

3. SPECIFICATIONS

3.1. LCD Screen (HJ080IA-01E)

| | |
|---------------------|-----------------------------------|
| Display Mode | IPS, Normally Black, Transmissive |
|---------------------|-----------------------------------|

| | |
|-------------------------|--|
| Resolution | 1024(RGB)×768 |
| Outline Size | 174 × 136 × 2.75 mm (H×V×D) |
| Display Area | 162.08 × 121.54 mm (H×V) |
| Brightness | 350 cd/m ² (Typical) |
| Contrast Ratio | 800:1 (Typical) |
| Viewing Angle | 85/85/85/85 (Typ.) (Left/Right/Up/Down) |
| Signal Interface | Parallel RGB (1 ch, 8-bit), 40 pins, FPC |
| Backlight | WLED |
| Input Voltage | 3.3V (Typical) |

3.2. Controller Board (VS-TY2660H-V815)

| | |
|----------------------------------|---|
| Input Power Adapter | 5V DC, greater than 1A |
| Video Input | HDMI |
| Audio Output | Earphone (3.5mm) |
| Power Connector | PH2.0 Micro USB |
| OSD Menu | Brightness, Contrast, Auto Adjustment, Language, etc. |
| Supported Languages | English, French, German, Spanish, Italian, and others |
| Board Size | 88mm x 53mm x 7mm |
| Standby Power Consumption | <1W (when no signal input) |

4. SETUP INSTRUCTIONS

Follow these steps to assemble and connect your LCD screen and controller board:

- 1. Connect the LCD Screen to the Controller Board:** Carefully connect the 40-pin FPC cable from the 8-inch HJ080IA-01E LCD screen to the corresponding 40P TTL interface on the VS-TY2660H-V815 controller board. Ensure the connection is secure and correctly oriented.
- 2. Connect the Keyboard:** Attach the provided keyboard with its cable to the designated keyboard connector on the controller board. This keyboard is used to navigate the On-Screen Display (OSD) menu.
- 3. Connect Video Input:** Connect your video source (e.g., Raspberry Pi, PC) to the HDMI input port on the controller board using an HDMI cable (not included).
- 4. Connect Power:** Connect the USB power cable to the PH2.0 Micro USB power connector on the controller board. Connect the other end of the USB power cable to a 5V DC power adapter with an output of more than 1A.
- 5. Optional Audio Connection:** If audio output is desired, connect headphones or speakers to the 3.5mm earphone jack on the controller board.

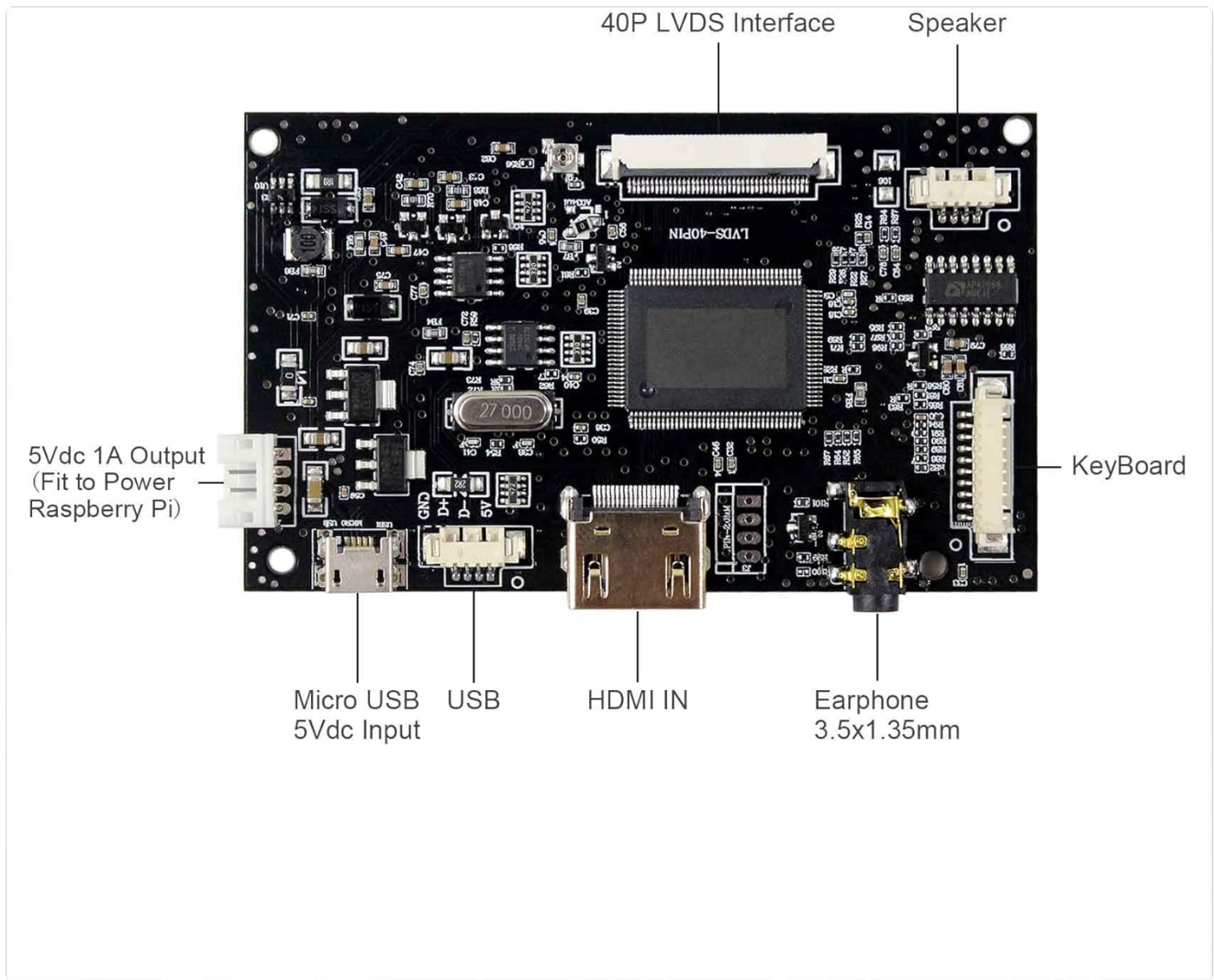


Figure 4.1: Controller Board with labeled ports.

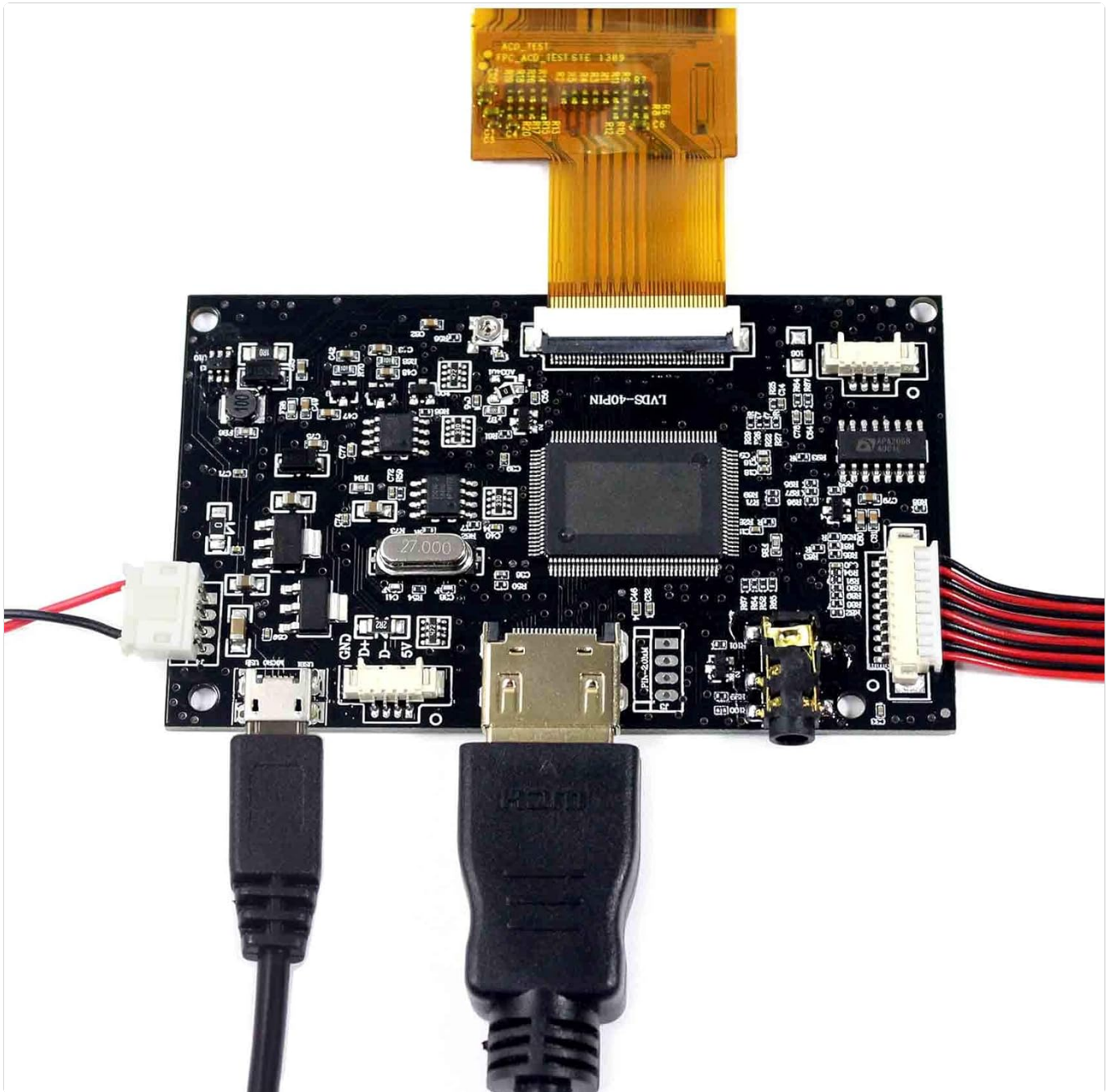


Figure 4.2: Controller Board with power and HDMI connections.

5. OPERATING INSTRUCTIONS

5.1. Powering On/Off

Once all connections are secure and power is supplied, the display should automatically power on. If no signal is detected, the board will enter a standby mode, consuming less than 1W of power. The keyboard typically includes a power button for manual control.

5.2. OSD Menu Navigation

Use the buttons on the provided keyboard to access and navigate the On-Screen Display (OSD) menu. The OSD menu allows you to adjust various display settings:

- **Brightness:** Adjust the overall luminance of the screen.
- **Contrast:** Modify the difference between the lightest and darkest areas of the image.
- **Auto:** Automatically adjusts display settings for optimal viewing.
- **Language:** Select your preferred language for the OSD menu (English, French, German, Spanish, Italian, etc.).

- Other settings may include color temperature, aspect ratio, and input selection.

6. MAINTENANCE

To ensure the longevity and optimal performance of your VSDISPLAY LCD kit, follow these maintenance guidelines:

- **Cleaning the Screen:** Use a soft, lint-free cloth slightly dampened with water or a non-abrasive screen cleaner. Avoid harsh chemicals or abrasive materials that could damage the screen surface.
- **Cleaning the Controller Board:** Keep the controller board free from dust and debris. Use compressed air or a soft brush to gently clean components. Ensure the board is powered off and disconnected from all sources before cleaning.
- **Storage:** When not in use, store the kit in a dry, cool environment, away from direct sunlight and extreme temperatures.
- **Handling:** Handle the LCD screen and controller board with care to avoid physical damage. Avoid applying excessive pressure to the screen.

7. TROUBLESHOOTING

If you encounter issues with your VSDISPLAY LCD kit, refer to the following common problems and solutions:

- **No Display/Blank Screen:**
 - Ensure the 5V DC power adapter is correctly connected and providing sufficient power (more than 1A).
 - Verify that the HDMI cable is securely connected to both the controller board and the video source.
 - Check the FPC cable connection between the LCD screen and the controller board for proper seating and orientation.
 - Confirm the video source is outputting a signal and is set to a compatible resolution (1024x768).
- **Flickering or Distorted Image:**
 - Check all cable connections for looseness or damage.
 - Ensure the power supply is stable and meets the specifications.
 - Try adjusting the 'Auto' setting in the OSD menu to optimize the display.
- **No Audio Output (from earphone jack):**
 - Verify that your HDMI source is sending audio along with the video signal.
 - Ensure your headphones or speakers are properly connected to the 3.5mm earphone jack.
 - Check the audio settings on your video source device.
- **OSD Menu Not Responding:**
 - Ensure the keyboard cable is securely connected to the controller board.
 - Test the keyboard buttons for functionality.

If you continue to experience issues after attempting these troubleshooting steps, please contact VSDISPLAY customer support for further assistance.

8. WARRANTY AND SUPPORT

For any questions, technical support, or warranty inquiries regarding your VSDISPLAY 8" 1024x768 IPS LCD with Controller Board, please contact VSDISPLAY directly through the platform where you purchased the product. Refer to your purchase documentation for specific warranty terms and contact information.

