

Cecotec 04101

Cecotec Power Black Titanium 1800 Smart Blender User Manual

Model: 04101

1. INTRODUCTION

Thank you for choosing the Cecotec Power Black Titanium 1800 Smart Blender. This appliance is designed for efficient blending, crushing, and mixing various ingredients. To ensure safe and optimal performance, please read this manual thoroughly before first use and retain it for future reference.

2. IMPORTANT SAFETY INSTRUCTIONS

- Read all instructions before using the appliance.
- Ensure the voltage indicated on the appliance corresponds to your local mains voltage before connecting.
- Do not immerse the motor base in water or any other liquid. Clean with a damp cloth only.
- Keep hands and utensils out of the container while blending to reduce the risk of severe injury to persons or damage to the blender. A scraper may be used but only when the blender is not running.
- Blades are sharp. Handle with extreme care when cleaning.
- Always operate the blender with the lid securely in place.
- Do not blend hot liquids in large quantities as this may cause pressure buildup and scalding. Fill the carafe only halfway when blending hot liquids.
- Unplug from the outlet when not in use, before putting on or taking off parts, and before cleaning.
- Do not operate any appliance with a damaged cord or plug, or after the appliance malfunctions or has been dropped or damaged in any manner.
- This appliance is for household use only. Do not use outdoors.
- Keep the appliance out of reach of children.

3. PRODUCT COMPONENTS

The Cecotec Power Black Titanium 1800 Smart Blender consists of the following main parts:

- **Motor Base:** Contains the powerful 1800W motor and control panel.
- **Heat-Resistant Glass Carafe:** 1.8-liter capacity for blending ingredients.
- **Lid with Measuring Cup:** Secures the carafe during operation and allows for adding ingredients.
- **6 Titanium Blades:** Durable and efficient blades for optimal blending and crushing.
- **Liquid Filter:** An accessory for preparing smoothies without pulp.



Image 1: Overview of the Cecotec Power Black Titanium 1800 Smart Blender with its main components and surrounding fresh produce.



Image 2: A top-down perspective of the blender's glass carafe, highlighting the six robust titanium blades at its base, surrounded by various ingredients.

4. SETUP

1. **Unpack:** Carefully remove all components from the packaging. Retain packaging for storage or transport.
2. **Clean:** Before first use, wash the glass carafe, lid, and liquid filter in warm, soapy water. Rinse thoroughly and dry. Wipe the motor base with a damp cloth.
3. **Position:** Place the motor base on a clean, dry, and stable surface. Ensure it is away from the edge of the countertop.
4. **Assemble Carafe:** Ensure the blade assembly is securely attached to the bottom of the glass carafe. Place the carafe onto the motor base, aligning it correctly until it clicks into place.
5. **Add Ingredients:** Place your desired ingredients into the glass carafe. Do not exceed the maximum fill line.
6. **Secure Lid:** Place the lid onto the carafe and twist to lock it securely. Ensure the measuring cup is inserted into the lid opening.

7. **Connect Power:** Plug the power cord into a suitable electrical outlet.



Image 3: The blender carafe filled with a colorful assortment of chopped fruits and vegetables, ready for blending.



Image 4: A hand pouring liquid into the blender carafe, which already contains ice cubes and various fruits, illustrating the process of adding ingredients.

5. OPERATING INSTRUCTIONS

The Cecotec Power Black Titanium 1800 Smart Blender offers variable speed control and three pre-set programs for convenience.

5.1. Variable Speed Control

1. With ingredients in the carafe and the lid secured, turn the control dial to select one of the 9 available speeds.
2. Start with a lower speed and gradually increase as needed for desired consistency.
3. To stop blending, turn the dial to the "0" position.

5.2. Pre-set Programs

The blender features three dedicated programs for common blending tasks:

- **Automatic Speed Change Program:** Ideal for general blending tasks, this program cycles through

various speeds to achieve optimal results.

- **Ice Crush Program:** Specifically designed for crushing ice efficiently.
- **Automatic Cleaning Program:** Facilitates easy cleaning of the carafe. (Refer to Section 6 for details).

To use a pre-set program, select the desired program using the control panel buttons. The blender will automatically run through the program cycle and stop when complete.

5.3. Turbo Function

For short bursts of maximum power, press and hold the "TURBO" button. Release the button to stop.

5.4. Using the Liquid Filter

The included liquid filter can be used to prepare smoothies and juices without pulp. Insert the filter into the carafe before adding ingredients. After blending, the filter will separate the pulp from the liquid.



Image 5: A split image demonstrating the function of the liquid filter. One side shows blended berries, while the other illustrates the filter's placement within the carafe to separate pulp.



Image 6: Two Cecotec blenders side-by-side, one filled with crushed ice (labeled "Ice Crush") and the other with a green smoothie (labeled "Smoothie"), showcasing different blending results.

6. CLEANING AND MAINTENANCE

Regular cleaning ensures the longevity and hygiene of your blender.

6.1. Automatic Cleaning Program

1. After use, rinse the carafe.
2. Fill the carafe with warm water up to the 1-liter mark and add a few drops of dish soap.
3. Secure the lid and select the "Automatic Cleaning Program".
4. Once the program finishes, empty the carafe and rinse thoroughly with clean water.

6.2. Manual Cleaning

- **Motor Base:** Unplug the blender. Wipe the motor base with a damp cloth. Do not immerse in water.
- **Glass Carafe:** The glass carafe is dishwasher safe. For manual cleaning, detach the blade assembly by twisting the carafe counter-clockwise when it's on the motor base (as if unscrewing it from the motor).

base, then continue to unscrew the blade assembly from the glass carafe). Wash the carafe, lid, and liquid filter in warm, soapy water.

- **Blades:** The titanium blades are sharp. Handle with extreme care. Wash them carefully with a brush and soapy water. It is not recommended to wash blades in a dishwasher to maintain their sharpness.
- **Drying:** Ensure all parts are completely dry before reassembling or storing.

7. TROUBLESHOOTING

Problem	Possible Cause	Solution
Blender does not start.	Not plugged in; Carafe not correctly assembled; Overload protection activated.	Ensure the power cord is securely plugged into a working outlet. Ensure the carafe is correctly seated and locked onto the motor base. Unplug, remove some ingredients, wait 15 minutes, then try again.
Ingredients are not blending smoothly.	Too little liquid; Too many ingredients; Ingredients are too large.	Add more liquid. Reduce the amount of ingredients. Cut ingredients into smaller pieces. Use the Turbo function or a higher speed setting.
Loud noise/unusual smell during operation.	Overload; Foreign object in carafe; Motor issue.	Stop the blender immediately. Unplug and check for any obstructions. Reduce ingredients. If the issue persists, contact customer support.
Leakage from carafe.	Lid not secured; Blade assembly not tightened; Carafe overfilled.	Ensure the lid is securely locked. Check that the blade assembly is tightly screwed onto the carafe. Do not exceed the maximum fill line.

8. SPECIFICATIONS

Brand	Cecotec
Model Number	04101
Power / Wattage	1800 W
Voltage	220 V
Volume Capacity	1.8 Liters (Carafe)
Material	Stainless Steel, Titanium, Metal, Heat-Resistant Glass
Number of Speeds	9
Special Features	3 Digital Programs (Automatic, Ice Crush, Cleaning), Turbo Function, Black Titanium Blades, Liquid Filter
Product Dimensions	42.5 x 22 x 22 cm
Item Weight	4.7 Kilograms

9. WARRANTY AND SUPPORT




Cecotec products are manufactured to high-quality standards. For information regarding warranty coverage, please refer to the warranty card included with your purchase or visit the official Cecotec website.




If you encounter any issues or require technical assistance, please contact Cecotec customer support. Have your model number (04101) and purchase details ready when contacting support.

For further assistance, please visit: www.cecotec.com

© 2024 Cecotec. All rights reserved.

Related Documents - 04101

	<p>Cecotec Power Black Titanium 1800 Smart Blender: User Manual and Safety Instructions</p> <p>Comprehensive user manual for the Cecotec Power Black Titanium 1800 Smart blender, covering safety instructions, operation, cleaning, maintenance, technical specifications, and warranty information.</p>
	<p>Cecotec Power Black Titanium 1800 Go Jug Blender Instruction Manual</p> <p>Comprehensive instruction manual for the Cecotec Power Black Titanium 1800 Go jug blender, covering safety, operation, cleaning, maintenance, technical specifications, and warranty.</p>
	<p>Cecotec Power Titanium 650 EasyGo Inox Blender - User Manual</p> <p>Comprehensive user manual for the Cecotec Power Titanium 650 EasyGo Inox blender, covering safety instructions, operation, cleaning, maintenance, specifications, and warranty.</p>

	<p>Cecotec Power Black Titanium 1000 Jug Blender Instruction Manual</p> <p>Instruction manual for the Cecotec Power Black Titanium 1000 and Power Black Titanium 1000 Inox jug blenders. Includes safety instructions, parts and components, assembly, operation, cleaning, maintenance, technical specifications, and warranty information.</p>
	<p>Cecotec Power Titanium 650 Fresh&Go Inox User Manual Single-Serve Blender Instructions</p> <p>Comprehensive user manual for the Cecotec Power Titanium 650 Fresh&Go Inox single-serve blender. Includes safety instructions, parts list, operation guide, cleaning and maintenance, technical specifications, disposal information, warranty, and copyright details.</p>
	<p>Cecotec Power Black Titanium 1800MAX Wizard Blender User Manual</p> <p>Comprehensive user manual for the Cecotec Power Black Titanium 1800MAX Wizard and Wizard Go blenders, covering safety instructions, operation, cleaning, maintenance, technical specifications, warranty, and copyright information.</p>

Documents - Cecotec – 04101



[\[pdf\]](#) User Manual Instructions

04101 Power Black Titanium 1800 Smart Manual JO Rus 71642759 cdn tpanback ru instructions |||

Power Black Titanium 1800 Smart 1. 4 2. 6 3. 7 4. 7 5. 8 6. 8 7. ... otec . . . , 6. :

Power Black Titanium 1800 Smart : **04101** 1800 , 220240 , 50/60 7. 2012/19/EU

WEEE . , , ...

lang:de **score:46** filesize: 2.45 M page_count: 12 document date: 2022-02-09



[\[pdf\]](#) User Manual Instructions Label

Power Black Titanium 1800 Smart Triple AManual de instrucciones Instruction manual Інструкція з експлуатації Руководство по эксплуатации Batidora User Manualtriplea mt content docs products 2419 web User Manual |||

Power Black Titanium 1800 Smart Batidora de vaso/ / Power Titanium 1800 Smart_Manual_JO.indd 1 ... of children. 6. TECHNICAL SPECIFICATIONS Model: Power Black Titanium 1800 Smart Product reference: **04101** 1800 W, 220-240 V, 50/60 Hz Made in China Designed in Spain 7. DISPOSAL OF OLD ELECTRICAL AP...

lang:en **score:36** filesize: 476.63 K page_count: 6 document date: 2024-09-02

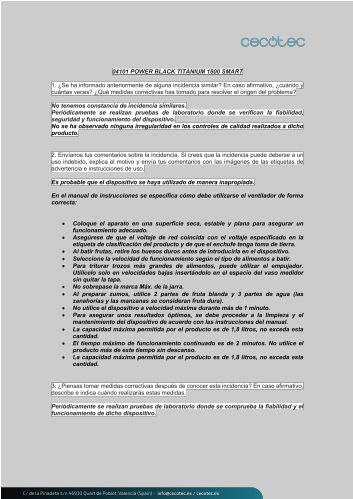


[\[pdf\]](#) User Manual Instructions Specifications

POWER TITANIUM 1800 SMART 11 set 2023 — Asegúrese de que el voltaje red coincida con especificado en la etiqueta clasificación del producto y power black titanium smart user manual cdn cecotec cloud media files |||

POWER TITANIUM 1800 SMART Batidora de vaso/ Jug blender. Manual de instrucciones Instruction manual ... ESPAOL 5. ESPECIFICACIONES TCNICAS Modelo: Power Black Titanium 1800 Smart Referencia del producto: **04101** 1800 W, 220-240 V, 50/60 Hz Fabricado en China Diseado en Espaa 6. RECICLAJE DE ELECTRODOMS...

lang:it **score:26** filesize: 1.04 M page_count: 56 document date: 2022-09-20



[pdf] User Manual

04101 Roberto Cortina Manual de usuarioCecotec Batidora Vaso Power Black Titanium 2500MAX Go 2500W Máxima Potencia 6 Hojas con Recubrimiento Titanio Negro Jarra Termorresistente 1 8L 5

Velocidades Incluye Botella Portátil Amazon es Hogar y cocina71Jmvq6hPVLm media amazon images I 71Jmvq6hPVL ref dp product quick view |||

04101 POWER BLACK TITANIUM 1800 SMART 1. Se ha informado anteriormente de alguna incidencia similar En caso afirmativo, cundo y cuntas veces Qu medidas correctivas has tomado para resolver el origen del problema No tenemos constancia de incidencia similares. Peridicamente se realizan pruebas de l...

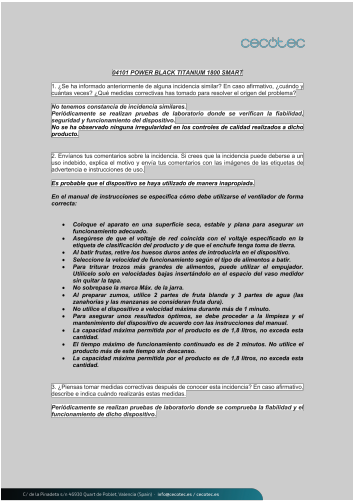
lang:es score:25 filesize: 193.44 K page_count: 2 document date: 2023-02-08



Cecotec Power Black Titanium 1800 Smart Blender: User Manual and Safety Instructions

Comprehensive user manual for the Cecotec Power Black Titanium 1800 Smart blender, covering safety instructions, operation, cleaning, maintenance, technical specifications, and warranty information.

lang:en score:24 filesize: 476.63 K page_count: 6 document date: 2024-09-02



[pdf] User Manual

04101 Roberto Cortina POWER BLACK TITANIUM 1800 SMART 1 ¿Se ha El producto no se retirado Información del Nombre de la marca Cecotec Batidora vaso Americacano Digital Power Black Titanium Smart 71Jmvq6hPVL m media amazon images I |||

04101 POWER BLACK TITANIUM 1800 SMART 1. Se ha informado anteriormente de alguna incidencia similar En caso afirmativo, cundo y cuntas veces Qu medidas correctivas has tomado para resolver el origen del problema No tenemos constancia de incidencia similares. Peridicamente se realizan pruebas de l...

lang:es score:23 filesize: 193.44 K page_count: 2 document date: 2023-02-08

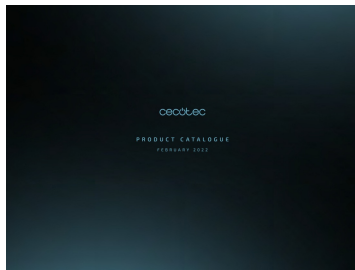


[\[pdf\] User Manual Instructions Specifications Warranty](#)

Power Black Titanium 1800 Smart 97036ad31ca187c25641a82db4e61770 cecotec ua upload
medialibrary 970 |||

Power Black Titanium 1800 Smart Batidora de vaso/ / Power Titanium 1800
Smart_Manual_JO.indd 1 ... nios. 6. ESPECIFICACIONES TCNICAS Modelo: Power
Black Titanium 1800 Smart Referencia del producto: **04101** 1800 W, 220-240 V,
50/60 Hz Made in China Diseado en Espaa 8 POWER TITANIUM 1800 SMART
Powe...

lang:it **score:21** filesize: 784.48 K page_count: 23 document date: 2020-08-11



[Cecotec Product Catalogue - February 2022](#)

Explore the comprehensive Cecotec product catalogue for February 2022, featuring a wide range of household appliances including robot vacuum cleaners, kitchen appliances, personal care items, and more. Discover innovative technology and value from Cecotec brands like Conga, Mambo, and Bongo.

lang:en **score:20** filesize: 137.82 M page_count: 1196 document date: 2022-03-07



[Cecotec Product Catalog: Home Appliances, Personal Care, and Climate Control](#)

Explore the extensive Cecotec product catalog featuring innovative home appliances, personal care devices, climate control solutions, and leisure equipment. Discover robot vacuums, coffee makers, hair dryers, fans, air conditioners, and much more.

lang:en **score:15** filesize: 13.06 M page_count: 48 document date: 2020-09-23



[Cecotec General Catalog February 2021](#)

Explore the comprehensive Cecotec General Catalog from February 2021, featuring a wide range of home appliances including vacuum cleaners, kitchen robots, coffee makers, and more. Discover innovative technology and quality products designed to enhance everyday living.

lang:es **score:12** filesize: 49.86 M page_count: 886 document date: 2021-03-31