

APIELE GQ19AF-10EZ

APIELE 10 Amp 19mm Latching Push Button Switch User Manual

Model: GQ19AF-10EZ

INTRODUCTION

This user manual provides detailed instructions for the installation, operation, and maintenance of the APIELE 10 Amp 19mm Latching Push Button Switch. This high-quality metal switch is designed for various applications, including automotive, motorcycle modification, and control equipment.

SAFETY INFORMATION

- Ensure power is disconnected before installation or maintenance to prevent electrical shock.
- Verify voltage and current ratings match your application to avoid damage to the switch or connected devices.
- Do not exceed the specified 10 Amp current rating or 12V operating voltage.
- Handle with care to avoid damaging internal components.
- If you are unsure about any installation steps, consult a qualified electrician.

PRODUCT OVERVIEW

The APIELE 10 Amp 19mm Latching Push Button Switch features a durable metal construction and an integrated LED ring. It is designed for reliable performance in various environments.

Key Features:

- **Latching Operation:** Push once for ON, push again for OFF.
- **High Current Rating:** 10 Amps.
- **LED Illumination:** 12V LED ring for status indication.
- **Durable Construction:** High-quality metal material.
- **IP65 Waterproof:** Suitable for wet or dusty environments.
- **Long Lifespan:** Electrical life of 200,000 times, mechanical life of 1,000,000 cycles.

Components:

The product includes the push button switch and a connector for wiring.

- 1 x Latching Push Button Switch
- 1 x Connector with pre-attached wires



Figure 1: APIELE 10 Amp 19mm Latching Push Button Switch (Red LED, Silver Stainless Steel).



Figure 2: Various angles of the APIELE push button switch, showcasing its robust design.



The Press Part of New Design Switch is Bigger than the Current Type. More Comfortable for Big Finger User.

More Strong Contact Terminals.

New Design Used in MAX 10A-12V AC/DC. Current Type Used in 5A-12V AC/DC.



Figure 3: Comparison highlighting the larger press part and stronger contact terminals of the new design (right) compared to the old design (left).



Figure 4: Illustration of the switch's durability, rated for 200,000 press times and 40,000 hours of lamp life.



Figure 5: Visual representation of the IP65 waterproof protection, indicating suitability for wet or dusty environments.

SPECIFICATIONS

Specification	Value
Model Number	GQ19AF-10EZ
Mounting Hole Size	19mm (3/4 inch)
Operation Mode	Latching (ON-OFF)
Contact Configuration	1NO (Normally Open)
Current Rating	10 Amps
Operating Voltage	12 Volts (for LED)

Specification	Value
Protection Degree	IP65 Waterproof
Electrical Life	200,000 times
Mechanical Life	1,000,000 cycles
Shell Material	Stainless Steel (Silver)
Terminal Type	Screw
Product Dimensions	1.57 x 0.39 x 1.18 inches



MOUNTING HOLE SIZE: **19MM(0.74")**

STRUCTURE: **1NO**

PROTECTION DEGREE: **IP65**

LED RATING: **10A/12V DC**

OPERATION: **LATCHING ***

LAMP COLOR:     

SHELL MATERIAL: **STAINLESS STEEL**

SWITCH LIFE & LED LIFE: **100,000 TIMES AND 40,000 HOURS**

*** (ON-OFF. PRESS THE BUTTON SWITCH WORK. PRESS AGAIN, SWITCH STOP WORK)**

LENGTH IN MILLIMETERS (MM)

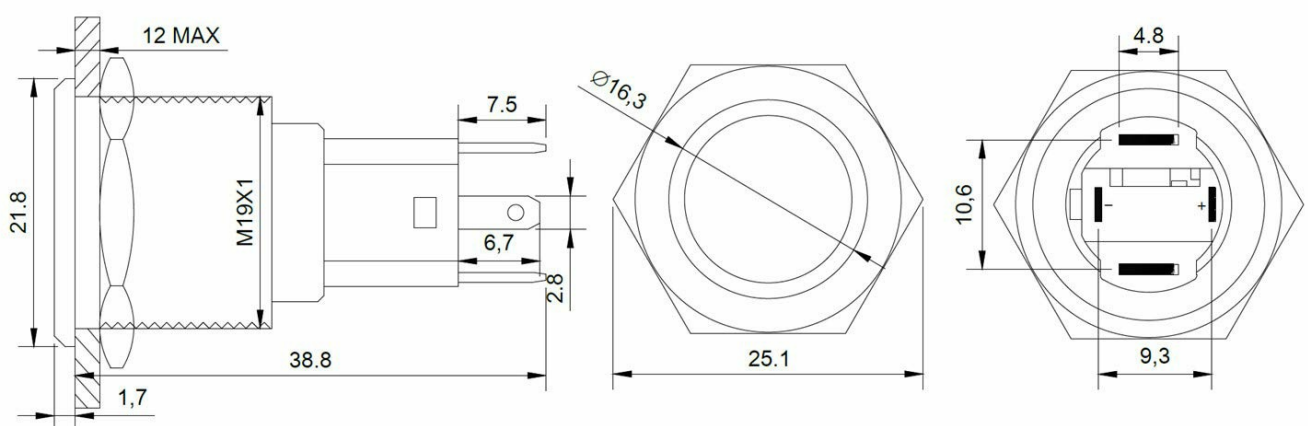


Figure 6: Detailed technical specifications and dimensions of the switch.

SETUP AND INSTALLATION

Follow these steps for proper installation of your APIELE Latching Push Button Switch.

Wiring Diagram:

The switch comes with a pre-wired connector for ease of installation. Refer to the diagram below for pin assignments:

- **Red Wire:** Positive LED Pin "+"
- **Black Wire:** Negative LED Pin "-"
- **Blue Wire:** Normal Open Pin



Figure 7: Wiring diagram showing the function of each colored wire on the connector.

Installation Steps:

1. **Prepare Mounting Hole:** Drill a 19mm (3/4 inch) diameter hole in the desired mounting surface.
2. **Insert Switch:** Insert the switch body into the prepared hole from the front.
3. **Secure with Nut:** Thread the securing nut onto the switch body from the back and tighten it to hold the switch firmly in place.

4. **Connect Wiring:** Attach the provided connector to the switch terminals. Ensure correct polarity for the LED function.



Figure 8: Visual guide for the installation process of the push button switch.

Your browser does not support the video tag.

Video 1: This video demonstrates the features and installation of the 10 Amp Latching Push Button switch, including its waterproof capabilities and various applications.

OPERATING INSTRUCTIONS

The APIELE Latching Push Button Switch operates with a simple ON-OFF mechanism.

- To turn on the connected device, press the button once. The LED ring will illuminate, indicating the switch is in the ON state.
- To turn off the connected device, press the button again. The LED ring will turn off, indicating the switch is in the OFF state.

Your browser does not support the video tag.

Video 2: This video showcases the functionality of the 10 Amp 19mm Latching/Momentary Push Button Switch, demonstrating its use in various applications like automotive dashboards and coffee machines.

Applications:

This versatile switch is suitable for a wide range of applications, including but not limited to:

- Automobile and motorcycle modifications
- Control equipment switch modifications
- Doorbell buttons
- SOS buttons
- Elevator buttons

- Household appliances



Figure 9: Examples of common applications for the APIELE push button switch, including doorbell, car, and elevator buttons.

MAINTENANCE

The APIELE Latching Push Button Switch is designed for minimal maintenance due to its durable construction and IP65 waterproof rating.

- **Cleaning:** Wipe the switch surface with a soft, damp cloth. Avoid using abrasive cleaners or solvents that could damage the finish or internal components.
- **Inspection:** Periodically check the wiring connections to ensure they are secure and free from corrosion.
- **Environmental Protection:** While waterproof, prolonged submersion is not recommended. Ensure the mounting area is properly sealed if exposed to extreme moisture.

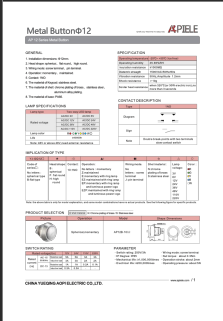
TROUBLESHOOTING

Problem	Possible Cause	Solution
Switch does not activate/deactivate device.	Incorrect wiring; Loose connection; No power to circuit; Faulty device.	Check wiring against diagram (Figure 7); Ensure all connections are secure; Verify power supply to the circuit; Test the connected device independently.
LED does not light up.	Incorrect LED wiring polarity; No power to LED circuit; Damaged LED.	Check LED wire polarity (Red for +, Black for -); Verify 12V power supply to LED pins; If LED is damaged, the switch may need replacement.
Switch feels loose after installation.	Mounting nut not tightened sufficiently.	Tighten the securing nut on the back of the switch.

WARRANTY AND SUPPORT

APIELE products are manufactured to high standards. For any issues or support inquiries, please contact APIELE Electric directly through their official channels or the retailer from whom the product was purchased. Visit the [APIELE Store on Amazon](#) for more information and contact options.

Related Documents - GQ19AF-10EZ

	<p>AP 12 Series Metal Button Specifications and Selection Guide</p> <p>Comprehensive technical specifications, parameters, and selection guide for the AP 12 Series metal buttons, including details on head shape, operation, contact types, lamp specifications, and switch ratings.</p>
---	--