



Manuals.plus /

› Ganeed /

› Ganeed 36W LED Square Ceiling Light Instruction Manual (Model PZE-912-40 Black)

Ganeed PZE-912-40

Ganeed 36W LED Square Ceiling Light Instruction Manual

Model: PZE-912-40 Black

1. INTRODUCTION

This manual provides detailed instructions for the safe installation, operation, and maintenance of your Ganeed 36W LED Square Ceiling Light. Please read this manual thoroughly before installation and retain it for future reference.



Figure 1: Ganeed 36W LED Square Ceiling Light (Model PZE-912-40 Black)

2. SAFETY INFORMATION

- Always turn off the power at the circuit breaker before beginning installation.
- Consult a qualified electrician if you are unsure about the installation process.
- Ensure all electrical connections are secure and comply with local electrical codes.
- Do not connect this fixture to a dimmer switch. It is not compatible with dimmers.
- This product is designed for indoor use only.
- Do not attempt to modify the fixture.
- Keep the fixture away from water and moisture.

3. PACKAGE CONTENTS

Verify that all components are present and undamaged before proceeding with installation.

- 1 x LED Ceiling Light
- 1 x Instruction Manual
- 1 x Installation Accessories (screws, wire nuts, etc.)

4. SPECIFICATIONS

Feature	Detail
Brand	Ganeed
Model Number	PZE-912-40 Black
Power	36 Watts
Voltage	110 Volts
Light Output	2160 Lumens
Color Temperature	6000-6500K (Cool White)
Dimensions (L x W x H)	15.7" x 15.7" x 2" (40cm x 40cm x 5cm)
Material	Acrylic, Iron
Average Life	50,000 Hours
CRI	80.00
Installation Type	Flush Mount
Control Method	Push Button (Standard Wall Switch)
Dimmable	No (Not compatible with dimmer switches)

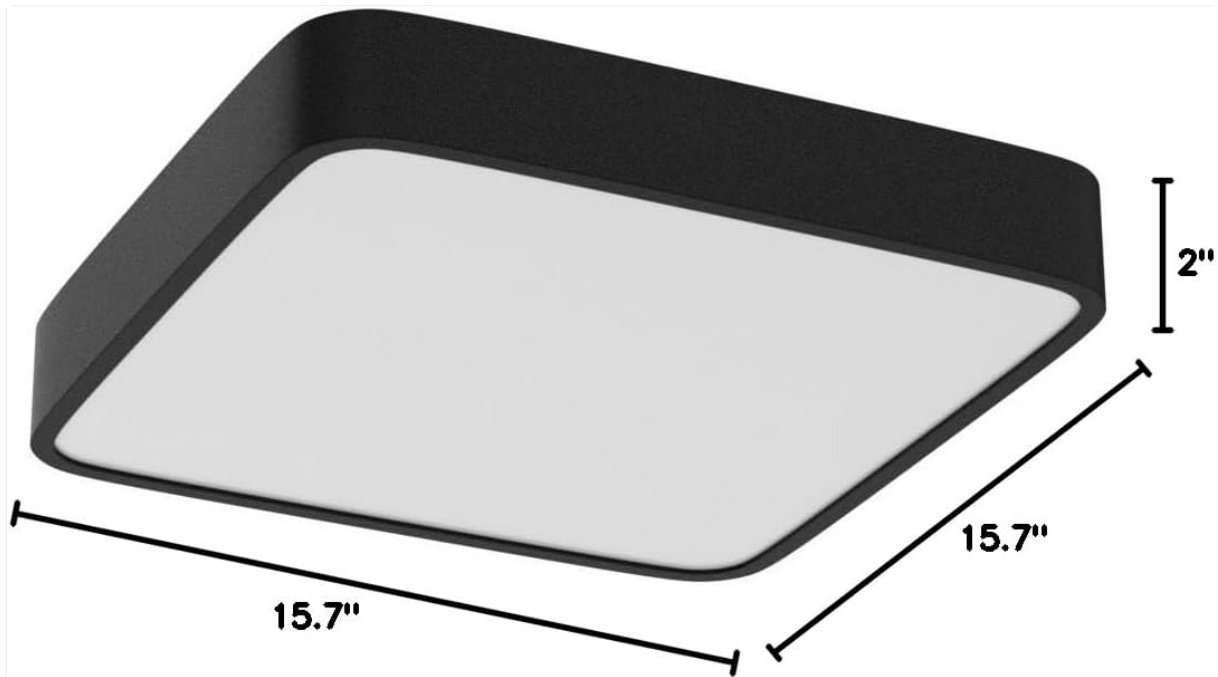


Figure 2: Product Dimensions

5. SETUP AND INSTALLATION

Follow these steps carefully for proper installation. Ensure power is OFF at the circuit breaker before starting.

1. **Prepare the Fixture:** Press the bottom side of the ceiling lamp cover and then remove it from above to access the internal wiring.

2. **Test Wiring (Optional but Recommended):** Connect the blue and brown test wires to temporarily check if the ceiling lamp functions normally.
3. **Disconnect Test Wires:** Press the button and remove the short blue and brown test wires from the screw terminal.
4. **Mark Installation Location:** Find and mark the desired location on the ceiling where you intend to install the lamp.
5. **Connect Electrical Wires:** Connect the live wire and neutral wire of the ceiling through the hole to the terminal button of the ceiling lamp. Ensure connections are secure.
6. **Mount the Lamp Body:** Install the ceiling lamp body to the marked location using appropriate screws.
7. **Reattach Cover:** Install the cover back onto the lamp body.
8. **Restore Power:** Turn on the power at the circuit breaker. The device should now be available for use.



Figure 3: Installation Steps Overview

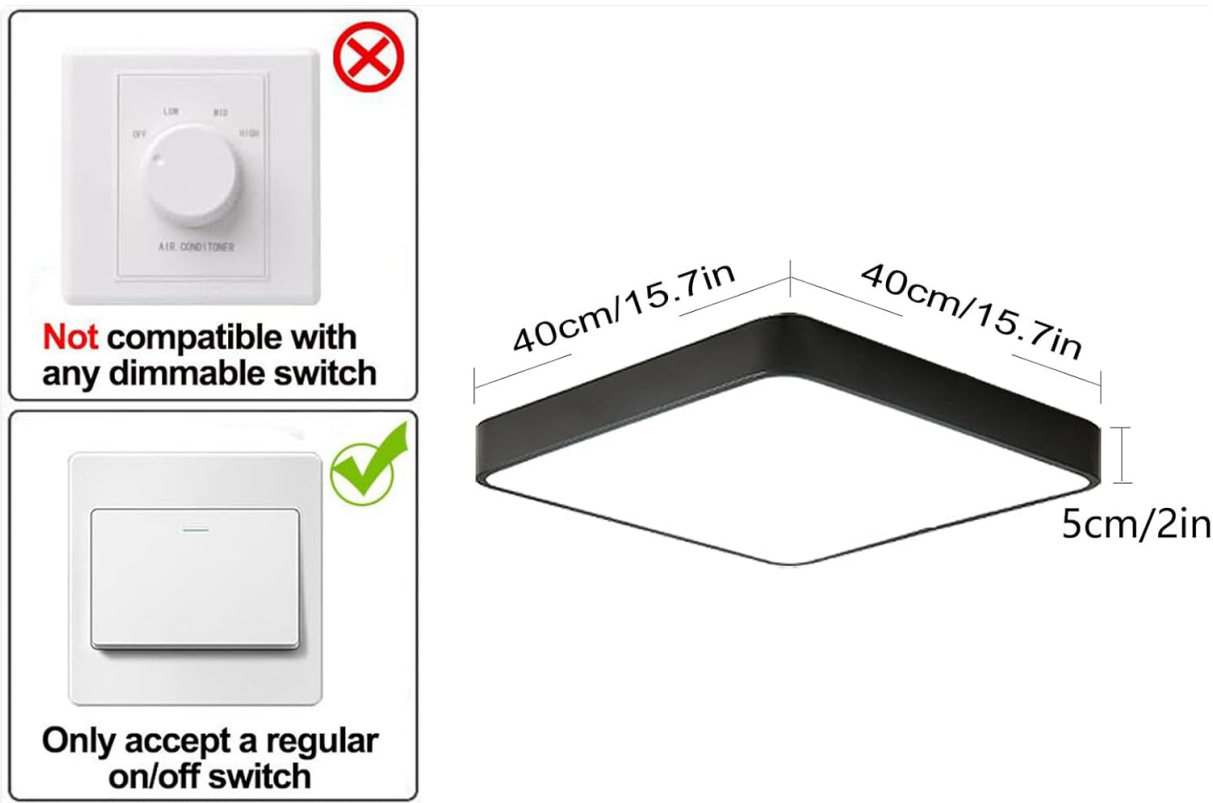


Figure 4: Dimmer Switch Incompatibility

Important Note: This LED ceiling light is **NOT** compatible with any dimmer switch. Use only a standard on/off wall switch.

6. OPERATING INSTRUCTIONS

Once installed and power is restored, operate the Ganeed LED Ceiling Light using a standard wall switch. Flip the switch to the "ON" position to illuminate the light and to the "OFF" position to turn it off.

Your browser does not support the video tag.

Video 1: Demonstration of the Ganeed Square LED Ceiling Light in operation, showing its illumination.

7. MAINTENANCE

- **Cleaning:** Ensure the power is off before cleaning. Wipe the fixture with a soft, dry cloth. Do not use abrasive cleaners or solvents.
- **Bulb Replacement:** The LED light source is integrated and not user-replaceable. The fixture has an average life of 50,000 hours.
- **Inspection:** Periodically check the fixture for any signs of damage or loose connections.

8. TROUBLESHOOTING

Problem	Possible Cause	Solution
Light does not turn on.	No power to the fixture. Loose wiring connection. Faulty wall switch.	Check circuit breaker. Ensure all wires are securely connected (power off first). Test the wall switch.
Light flickers.	Incompatible dimmer switch. Loose wiring.	Ensure a standard on/off switch is used. Check wiring connections (power off first).
Light is dim.	Not applicable for this non-dimmable fixture.	This fixture provides a fixed cool white light output of 2160 lumens.

9. WARRANTY AND SUPPORT

This Ganeed LED Ceiling Light comes with a **1-year warranty** from the date of purchase, covering manufacturing defects.

For technical support, warranty claims, or any questions regarding your product, please contact Ganeed customer service through your purchase platform or the official Ganeed website. Please have your model number (PZE-912-40 Black) and proof of purchase ready.