



[Manuals.plus](#) /

› [R.W.FLAME](#) /

› R.W.FLAME 43" Electric Fireplace Mantel with Freestanding Firebox and Remote Control User Manual

**R.W.FLAME 615855869681**

# R.W.FLAME 43" Electric Fireplace Mantel User Manual

Model: 615855869681

## IMPORTANT SAFETY INFORMATION

---

Please read all instructions before using this electric fireplace. Failure to follow these instructions may result in electric shock, fire, or personal injury.

- Ensure the power outlet meets the product's electrical requirements.
- Do not operate the fireplace with a damaged cord or plug.
- Keep combustible materials at least 3 feet (0.9 meters) away from the front of the fireplace.
- Do not insert foreign objects into any ventilation or exhaust opening.
- This appliance is equipped with an overheating protection device. If the heater overheats, it will automatically shut off.



**Figure 1: Overheating Protection Feature.** The fireplace is designed with safety in mind, including overheating protection, making it suitable for households with children and pets.

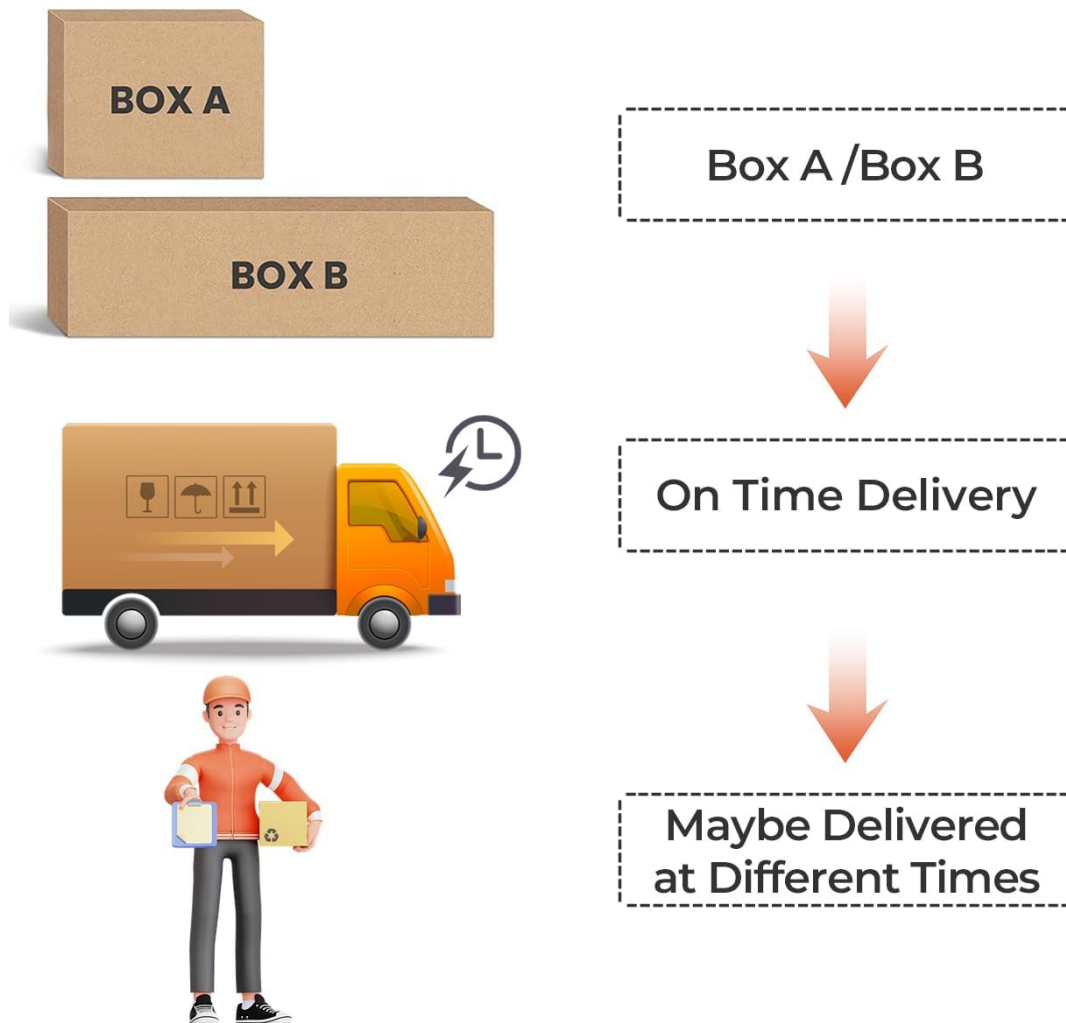
## SETUP AND ASSEMBLY

---

The R.W.FLAME Electric Fireplace Mantel is shipped in two separate packages to ensure safe delivery of all components. These packages may arrive at different times.

- **Unpacking:** Carefully remove all components from the packaging. Verify all parts are present according to the parts list in your included manual.
- **Assembly:** Follow the step-by-step assembly instructions provided in the printed manual. Typically, assembly involves attaching the mantel pieces to form the surround, then inserting the electric firebox.
- **Placement:** Position the assembled fireplace on a flat, stable surface. Ensure there is adequate clearance around the unit for proper ventilation.

# Electric Fireplace and Frame Sent in 2 Packages



**Figure 2: Two-Package Delivery.** The electric fireplace and its mantel frame are shipped in two separate boxes, which might arrive on different days.

## OPERATING INSTRUCTIONS

Your R.W.FLAME electric fireplace can be operated using the control panel on the unit or the included remote control.

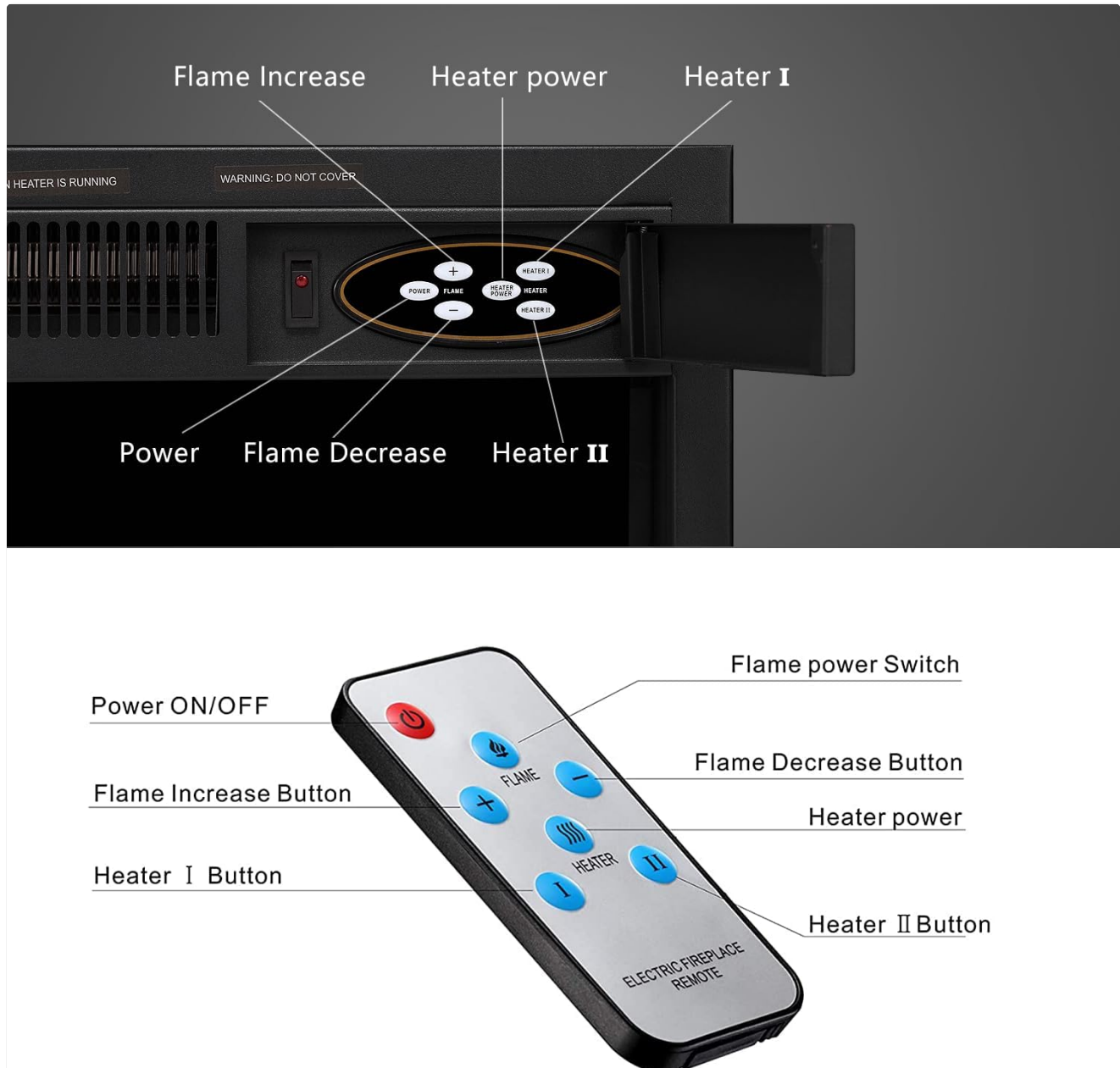
### Control Panel Operation

The control panel is typically located behind a small access door on the firebox. It includes buttons for power, flame intensity, and heater settings.

- **Power:** Press the 'Power' button to turn the unit on or off.
- **Flame Intensity:** Use the 'Flame Increase' and 'Flame Decrease' buttons to adjust the brightness of the LED flame effect (7 levels available).
- **Heater Settings:** Select between 'Heater I' (750W) and 'Heater II' (1500W) for different heat outputs. The heater can be operated independently of the flame effect.

## Remote Control Operation

The remote control allows convenient operation from up to 5 meters away.



**Figure 3: Control Panel and Remote Control.** This image details the functions of both the fireplace's integrated control panel and the handheld remote control for easy operation.

- **Power ON/OFF:** Press the red power button.
- **Flame Increase/Decrease:** Use the '+' and '-' buttons under 'FLAME' to adjust flame brightness.
- **Heater I/II:** Press 'HEATER I' or 'HEATER II' to activate the respective heating mode.
- **Flame Power Switch:** This button controls the flame effect independently.



**Figure 4: Remote Control Usage.** The remote control allows for convenient adjustment of flame effects and heating modes from a distance.

## MAINTENANCE

---

Regular maintenance ensures the longevity and optimal performance of your electric fireplace.

- **Cleaning:** Disconnect power before cleaning. Use a soft, damp cloth to clean the exterior surfaces. Do not use abrasive cleaners or sprays.
- **Ventilation:** Ensure the air intake and exhaust vents are clear of dust and debris. Periodically vacuum these areas.
- **Light Bulbs:** If the flame effect weakens, the LED bulbs may need replacement. Refer to the detailed instructions in your printed manual for bulb replacement.
- **Storage:** If storing the unit for an extended period, unplug it and cover it to protect from dust.

## TROUBLESHOOTING

---

If you encounter issues with your electric fireplace, refer to the following common problems and solutions:

<b>Problem</b>	<b>Possible Cause</b>	<b>Solution</b>
Unit does not turn on.	No power, power cord not plugged in, circuit breaker tripped.	Check power connection, ensure outlet is functional, reset circuit breaker.
No heat output.	Heater not activated, overheating protection engaged.	Ensure heater setting is selected. Turn off unit, wait 15 minutes, then restart to reset overheating protection.
Flame effect not working.	Flame effect not activated, LED bulbs faulty.	Activate flame effect via control panel or remote. Consult manual for bulb replacement.
Remote control not working.	Dead batteries, obstruction, remote out of range.	Replace batteries. Remove obstructions. Operate within 5 meters.

If problems persist, contact customer support.

## **SPECIFICATIONS**

---

Detailed technical specifications for the R.W.FLAME 43" Electric Fireplace Mantel.

# Size & Specification

Powerful heater support heating up to 400 square feet room



120 Voltgae



Quite < 40dB



750/1500 Watts



5100 BTU

Figure 5: Product Dimensions. This image illustrates the overall dimensions of the fireplace mantel.

Feature	Detail
Brand	R.W.FLAME
Model Number	615855869681
Product Dimensions (D x W x H)	13.7" x 43.3" x 39.6"
Material	Glass, Metal, Wood
Color	Black
Power Source	AC
Heat Output	5100 British Thermal Units (BTU)
Heating Power	750W / 1500W
Heating Coverage	Up to 400 sq. ft.

Feature	Detail
Installation Type	Freestanding
Noise Level	Less than 36dB
Included Components	Fireplace mantel, 750W/1500W electric firebox, remote control

## WARRANTY AND SUPPORT

---

This R.W.FLAME electric fireplace comes with a limited warranty. For specific details regarding warranty coverage, duration, and terms, please refer to the warranty card included with your product or contact R.W.FLAME customer service.

For technical assistance, troubleshooting not covered in this manual, or to inquire about replacement parts, please contact R.W.FLAME customer support through their official website or the contact information provided in your product packaging.