

ELG FULL20_PRO

ELG FULL20_PRO Full Motion TV Wall Mount Instruction Manual

Model: FULL20_PRO | Brand: ELG

1. INTRODUCTION AND OVERVIEW

The ELG FULL20_PRO is a versatile full motion TV wall mount designed to securely hold televisions ranging from 15 to 58 inches and weighing up to 66.1 lbs (30 kg). It features articulating arms that allow for extensive swivel, tilt, and extension adjustments, providing optimal viewing angles from various positions in a room. The mount supports VESA patterns from 75x75mm up to 200x200mm.

Key features include a slim profile when retracted, robust carbon steel construction for durability, and integrated cable management to maintain a clean and organized appearance.



Image 1.1: Overview of the ELG FULL20_PRO TV Wall Mount highlighting its main features and capabilities.

2. SAFETY INFORMATION

Important Safety Instructions:

- Read all instructions carefully before installation. Failure to do so may result in personal injury or property damage.
- This product is designed for secure mounting on **bricks/concrete walls and single wood studs only**. It is **not suitable for drywall alone**.
- Ensure the mounting surface can safely support the combined weight of the mount and your television.
- Use appropriate tools and hardware as specified in the installation guide.
- If you are unsure about any part of the installation process, consult a qualified professional.
- Mounting flat screen TVs on the wall can help prevent childhood injuries by securing the TV.

3. PACKAGE CONTENTS

Verify that all components are present before beginning installation:

- 1 x ELG FULL20_PRO TV Wall Mount Support
- 1 x Installation Manual (this document)
- 1 x Kit Accessories (includes various screws, anchors, washers, and a bubble level)

4. SETUP AND INSTALLATION

The ELG FULL20_PRO mount is designed for quick assembly and easy installation, typically completed in under 15 minutes. Follow these general steps:

1. **Attach Brackets to TV:** Secure the TV brackets to the back of your television using the provided screws that match your TV's VESA pattern.
2. **Choose Wall Height and Mount:** Determine the desired height for your TV. Mark the drilling points on the wall, ensuring they align with a wood stud or are suitable for concrete/brick anchors. Drill pilot holes and securely attach the wall plate of the mount to the wall. Use the included bubble level for precise alignment.
3. **Hang TV and Adjust:** Carefully lift your TV and hook the attached brackets onto the wall mount. Ensure the TV is stable and locked into place. Make any necessary adjustments for tilt, swivel, or level using the mount's features.

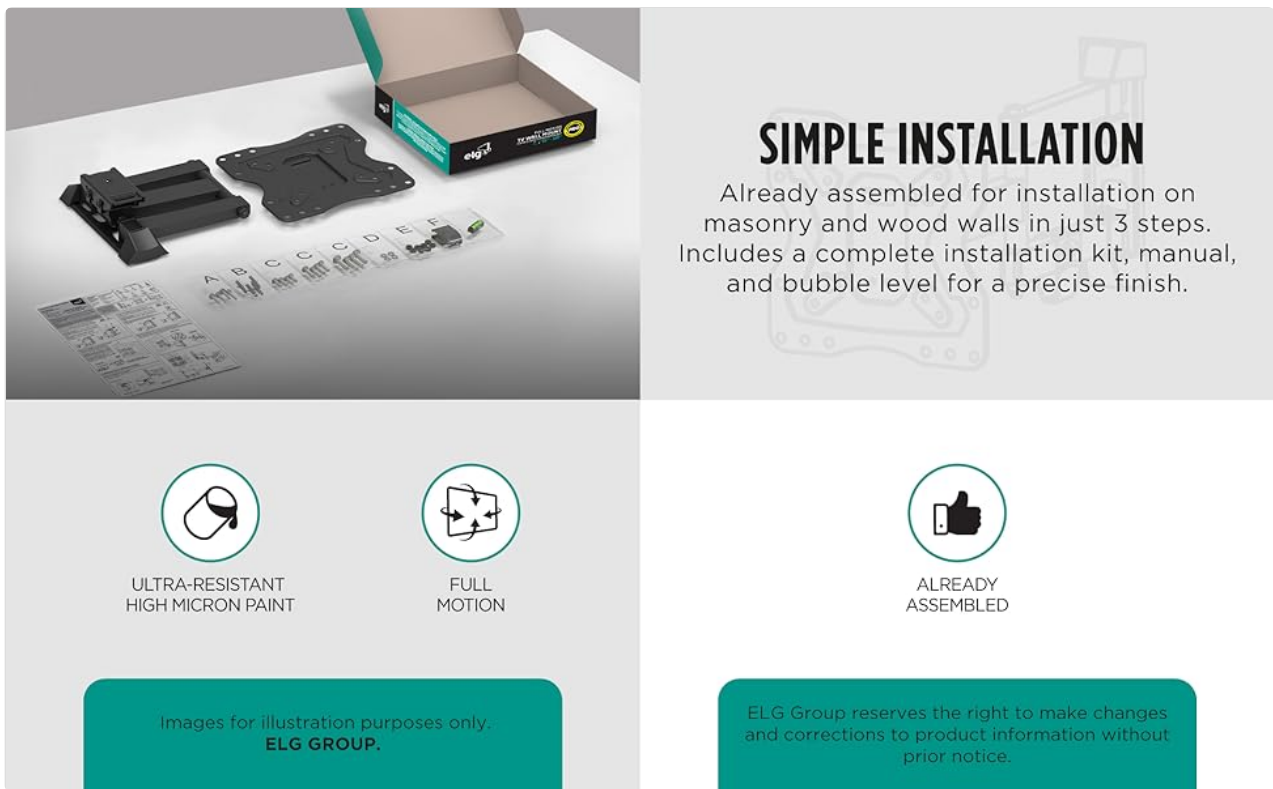


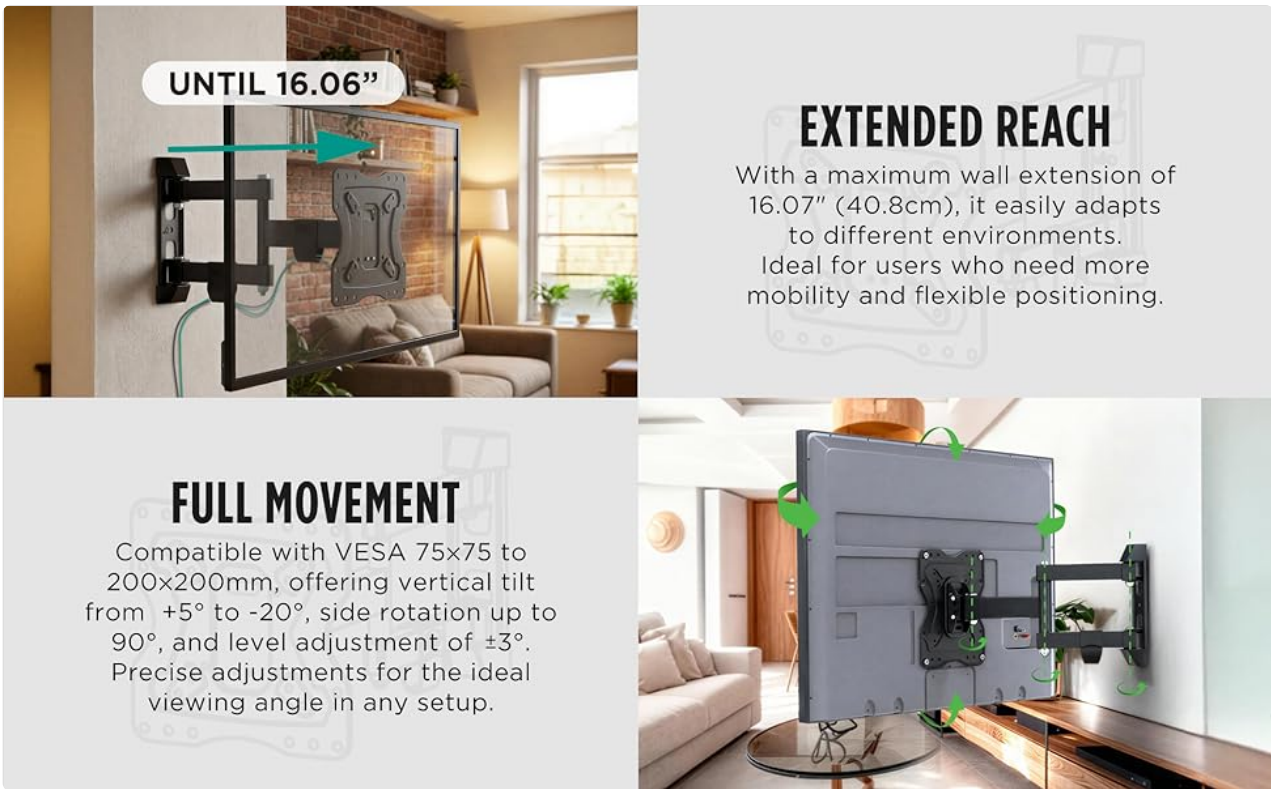
Image 4.1: Visual guide to the simple 3-step installation process.

Video 4.2: This video demonstrates the installation process and key features of the ELG Full Motion TV Wall Mount.

5. OPERATING INSTRUCTIONS

The FULL20_PRO mount offers flexible adjustments to achieve your desired viewing experience:

- **Tilt Adjustment:** The TV can be tilted from -5° (downward) to $+10^{\circ}$ (upward) to reduce glare and optimize vertical viewing angles.
- **Swivel Adjustment:** The articulating arms allow the TV to swivel up to 90° left or right, depending on the screen size, for flexible horizontal positioning.
- **Extension and Retraction:** The mount extends up to 16.06 inches (40.8 cm) from the wall and retracts to a slim 2.64 inches (6.7 cm) for a low-profile appearance.
- **Post-Installation Roll Adjustment:** Fine-tune the TV's level with a $-3^{\circ}/+3^{\circ}$ roll adjustment after installation.
- **Cable Management:** Utilize the integrated cable organizer clips on the arms to route and conceal audio, video, and power cables for a tidy setup.



UNTIL 16.06"

EXTENDED REACH

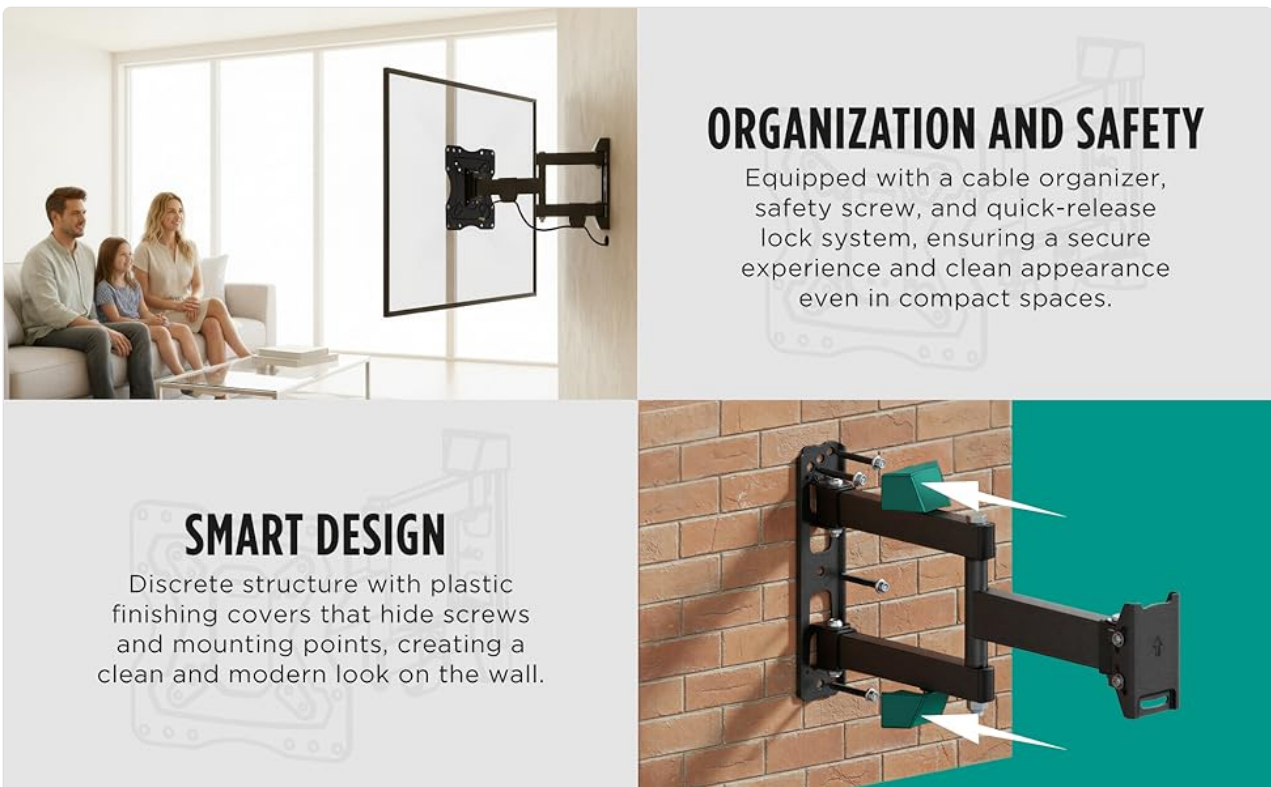
With a maximum wall extension of 16.07" (40.8cm), it easily adapts to different environments.

Ideal for users who need more mobility and flexible positioning.

FULL MOVEMENT

Compatible with VESA 75x75 to 200x200mm, offering vertical tilt from +5° to -20°, side rotation up to 90°, and level adjustment of ±3°. Precise adjustments for the ideal viewing angle in any setup.

Image 5.1: Demonstrating the mount's extended reach and full movement for optimal viewing.



ORGANIZATION AND SAFETY

Equipped with a cable organizer, safety screw, and quick-release lock system, ensuring a secure experience and clean appearance even in compact spaces.

SMART DESIGN

Discrete structure with plastic finishing covers that hide screws and mounting points, creating a clean and modern look on the wall.

Image 5.2: Illustrating the cable organization and smart design elements of the mount.

Video 5.3: This video showcases the versatility and design of ELG TV and monitor stands, including wall mounts.

6. MAINTENANCE

To ensure the longevity and safe operation of your ELG FULL20_PRO TV wall mount, follow these maintenance guidelines:

- **Regular Cleaning:** Dust the mount periodically with a soft, dry cloth. Avoid using abrasive cleaners or

solvents that could damage the finish.

- **Check Connections:** Annually, inspect all screws and bolts to ensure they remain tight and secure. Over time, vibrations or adjustments can cause fasteners to loosen.
- **Inspect for Wear:** Check the articulating arms and joints for any signs of wear, damage, or unusual movement. If any issues are detected, discontinue use and contact customer support.

7. TROUBLESHOOTING

If you encounter any issues with your ELG FULL20_PRO TV wall mount, refer to the following common problems and solutions:

- **TV is not level:** Use the post-installation roll adjustment feature (-3°/+3°) to fine-tune the TV's horizontal alignment. Ensure the wall plate was installed level initially.
- **Mount feels loose or unstable:** Immediately remove the TV from the mount. Re-check all wall fasteners and TV bracket screws to ensure they are securely tightened. Verify that the wall material is appropriate for the mount and that anchors (if used) are correctly installed.
- **Difficulty adjusting the arms:** The articulating arms may be stiff initially. Apply gentle, even pressure when moving. If a joint is excessively stiff, check for any obstructions or overtightened bolts.
- **Cables are not staying organized:** Ensure cables are properly routed through the integrated cable clips. If clips are damaged or missing, contact customer support for replacements.

For issues not covered here, please contact ELG customer support.

8. SPECIFICATIONS

Feature	Specification
Brand	ELG
Model Number	FULL20_PRO
Compatible TV Sizes	15" to 58"
Maximum Load Capacity	66.1 lbs (30 kg)
VESA Compatibility	75x75mm, 100x100mm, 200x100mm, 200x200mm
Movement Type	Articulating (Full Motion)
Tilt Angle	-5° (down) / +10° (up)
Swivel Angle	Up to 90° (left/right, varies with TV size)
Roll Adjustment	-3° / +3°
Extension from Wall	2.64" (6.7 cm) to 16.06" (40.8 cm)
Material	Carbon Steel
Product Dimensions	10.24 x 9.25 x 2.76 inches (packaged)
Item Weight	4.97 pounds

9. WARRANTY AND SUPPORT

For warranty information, please refer to the documentation included with your product packaging or visit the official ELG website. ELG is committed to providing quality products and customer satisfaction.

If you require technical assistance, have questions about installation, or need to report a missing/damaged part, please contact ELG customer support through their official channels. Contact details can typically be found on the product packaging or the ELG brand website.