

[manuals.plus](#) /

› [uvBeast](#) /

› [uvBeast V3 385-395nm Black Light UV Flashlight Instruction Manual](#)

uvBeast V3

uvBeast V3 385-395nm Black Light UV Flashlight Instruction Manual

Model: V3 | Brand: uvBeast

INTRODUCTION

The uvBeast V3 is a high-power UV flashlight designed for professional and commercial applications, as well as advanced enthusiast use. Featuring upgraded triple broad-band LEDs (385-395nm), it offers superior UV intensity and an extended beam range compared to traditional 100 LED models. This manual provides essential information for the safe and effective operation, maintenance, and troubleshooting of your uvBeast V3 flashlight.



Image: The official uvBeast company logo.

SETUP

1. Unpacking and Initial Inspection

Carefully remove all components from the packaging. Verify that all included items are present: uvBeast V3 flashlight, UV optic glasses, 2x 18650 Li-ion batteries, 2-port battery charger, adapter, extension barrel, and spare O-rings.

EVOLUTION.....OF OUR 100 LED UV. UVBEAST V3 IS HERE

Patented: 6070865



Image: The uvBeast V3 flashlight shown with its packaging and included accessories.

2. Battery Installation and Charging

The uvBeast V3 uses rechargeable 18650 Li-ion cells. Before first use, ensure the batteries are fully charged. Locate the battery compartment, typically by unscrewing the tail cap or a section of the flashlight body. Insert the 18650 Li-ion batteries with the correct polarity. Use the provided 2-port battery charger and adapter to charge the batteries. A full charge typically takes approximately 4 hours.

Important: Remove the insulation disc from the battery tailcap before first use.

V3 EVEN MORE POWER

LOOKING FOR THE MOST POWERFUL
UV FLASHLIGHT IN ITS CLASS?



**uvBeast™
V3**

(385-395nm)



**uvBeast™
Version 2**

(385-395nm)



**Other
Standard
100 LED
Models**

(395nm)

uvBeast™

Image: A close-up view of the uvBeast V3 flashlight, highlighting the section where batteries are inserted.

OPERATING INSTRUCTIONS

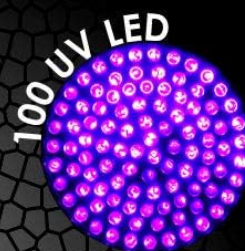
1. Powering On/Off

To power on the uvBeast V3, firmly press the rear push button. Press again to cycle through modes (if applicable) or to power off. Ensure all sections of the flashlight are securely tightened for proper electrical contact and operation.

UVBEAST GOES RECHARGEABLE

POWER KIT INCLUDED:

x2 Li-ion 18650 2600mAh cells (protected), USB 2-port charger, mains plug



uvBeast V3

100 LED

RECHARGEABLE?

Yes

*(x2 18650 Li-ion)

No

(x6 AA Alkaline)

UV POWER
EQUIVALENT TO...

30w

(3x10w 385nm- 395nm)

18w max

UV LED TYPE

x3 SMD LED

x100 LED
(DIP Bulbs)

UV BEAM DISTANCE
(Dark conditions)

70-80ft+

20-30ft

WORKING TIME

2-4hrs

(x300-500 charge cycles)

12-16hrs
(per battery set)

uvBeast™

*with option to add a 3rd Li-ion cell for extended working time

Image: The rear section of the uvBeast V3 flashlight, showing the power button.

2. General Usage

The uvBeast V3 emits a powerful 385-395nm UV beam. It is ideal for detecting fluorescent materials, such as pet urine stains, scorpions, counterfeit currency, and certain minerals. For optimal results, use in dark or dimly lit environments. Always wear the provided UV optic glasses to protect your eyes from direct exposure to the UV light.

UVBEAST UV QUALITY GETS EVEN BETTER

Glasses included with uvBeast V3

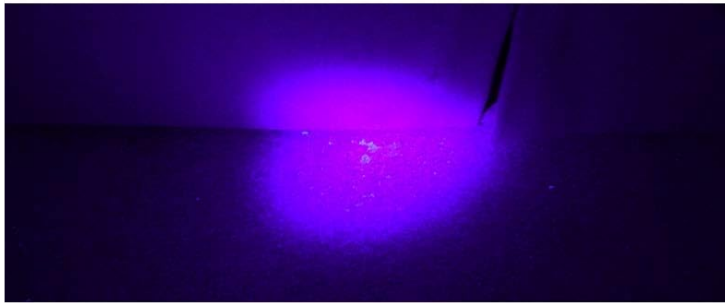
Our color tint formula optimized for wavelength blocking & transmission with the uvBeast flashlight



Invisible stain



Under normal light



Without uvBeast Glasses



WITH uvBeast Glasses

uvBeast™

Image: The uvBeast V3 flashlight in use, demonstrating its powerful UV beam on a surface.

The V3 offers an unbeatable UV range, with its beam throw extending over 70 feet. It has been successfully tested to fluoresce UV ink at distances over 135 feet, making it suitable for large area inspections.

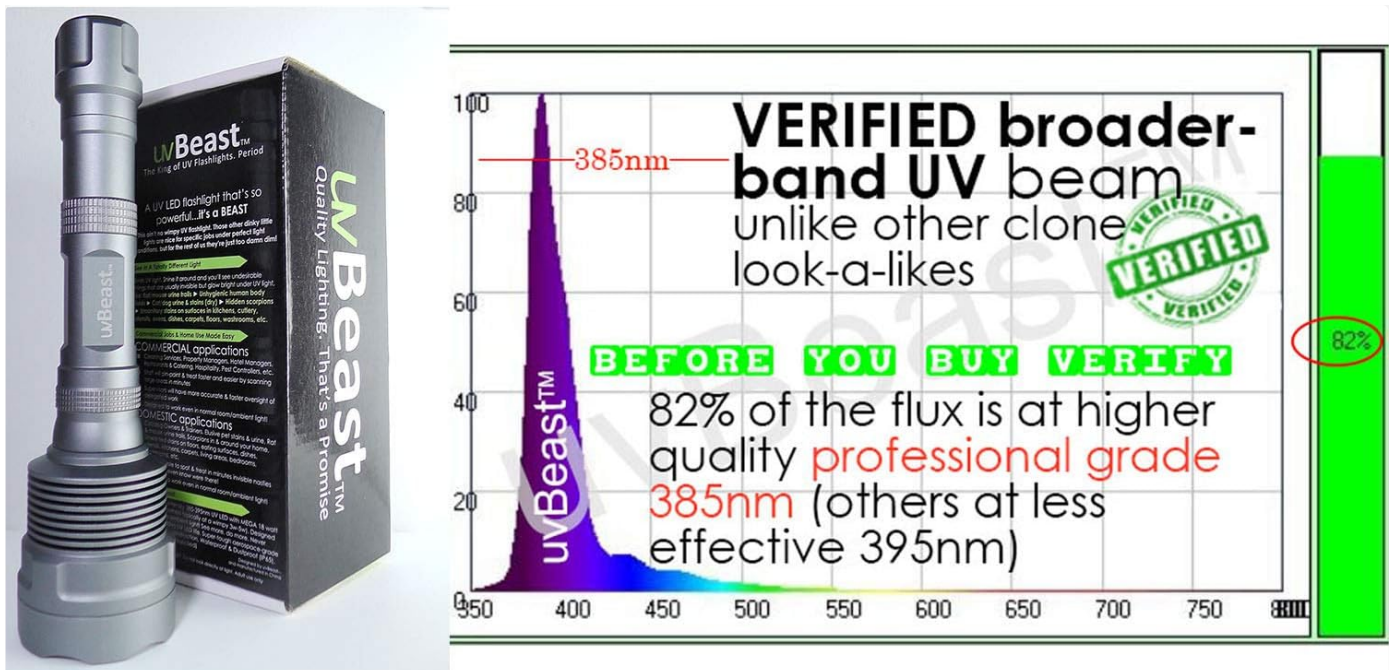


Image: A visual comparison illustrating the superior UV intensity of the uvBeast V3 compared to other models.

MAINTENANCE

1. Cleaning

Wipe the flashlight body with a soft, damp cloth. Do not use abrasive cleaners or solvents. Keep the lens clean for optimal performance.

2. Battery Care

Store batteries in a cool, dry place when not in use. Avoid overcharging or completely draining the batteries to prolong their lifespan. The included 18650 Li-ion batteries have an average battery life of 4 hours per charge and support approximately 300-500 charge cycles.

3. O-Ring Replacement

The uvBeast V3 is waterproof. To maintain its waterproof rating, periodically inspect the O-rings for wear and tear. Replace them with the provided spare O-rings as needed to ensure a tight seal.

TROUBLESHOOTING

1. Flashlight Not Turning On

- Ensure batteries are correctly inserted with proper polarity.
- Verify batteries are fully charged.
- Check that all sections of the flashlight body are securely tightened. Loose connections can prevent the light from activating.
- Confirm the insulation disc has been removed from the battery tailcap.

If the flashlight still does not turn on after checking these points, it may indicate a defective unit or battery. Refer to the warranty information for further assistance.

2. Dim or Flickering Light

- Recharge the batteries.

- Clean the battery contacts and internal connections.
- Ensure all parts are tightly assembled.

SPECIFICATIONS

Brand	uvBeast
Model	V3
Special Feature	Portable, Rechargeable
Color	Anodized Anthracite
Power Source	Battery Powered (2x Lithium Ion 18650)
Light Source Type	UV LED (Triple 1.2A SMD LEDs)
Material	Aluminum
Product Dimensions	2.17"D x 2.17"W x 8.66"H
Voltage	3.7 Volts
Item Weight	13.3 ounces (377 Grams)
Water Resistance Level	Waterproof
Brightness	100 candela
Wavelength	385-395nm
Average Battery Life	4 Hours
Included Components	UV optic glasses; batteries; 2-port battery charger; adapter; extension barrel; spare O-rings

WARRANTY AND SUPPORT

The uvBeast V3 comes with a 1-year manufacturer's warranty. For warranty claims, technical support, or any inquiries, please contact uvBeast customer service through their official channels or the retailer where the product was purchased.

