



[Manuals.plus](#) /

> [APEXEL](#) /

> APEXEL Professional Macro Photography Lens for Smartphone User Manual

## APEXEL HB100MM

# APEXEL Professional Macro Photography Lens User Manual

Model: HB100MM | Brand: APEXEL

## 1. INTRODUCTION

The APEXEL Professional Macro Photography Lens is engineered to transform your smartphone into a powerful macro camera, allowing you to capture intricate details of small objects with exceptional clarity. Featuring a professional optical design with 5 quality glass lenses and multi-layer coatings, this lens ensures high-definition views without distortion or vignetting. Its large aperture design provides beautiful bokeh backgrounds, enhancing the professional quality of your close-up shots.

This manual provides detailed instructions for setup, operation, maintenance, and troubleshooting to help you maximize your experience with the APEXEL Macro Lens.



Image: The APEXEL Professional Macro Photography Lens with its universal clip.

## 2. PACKAGE CONTENTS

Please verify that all the following items are included in your package:

- 1 x APEXEL Macro Lens (100MM)
- 1 x Universal Clip
- 1 x Instruction Manual
- 1 x Cleaning Cloth
- 1 x Waterproof Storage Bag



Image: All items included in the APEXEL Macro Lens package.

### 3. SETUP AND INSTALLATION

The APEXEL Macro Lens is designed for easy and quick installation without the need for special apps or phone cases. Follow these steps to attach the lens to your smartphone:

1. **Open the Clip:** Gently open the universal clip and position it over your phone's main camera lens. Ensure the phone camera is flat; if your phone has a case, you may need to remove it for optimal fit.
2. **Align the Lens:** Align the macro lens threads with the cell phone clip threads. The clip's design ensures smooth alignment, preventing shifting.
3. **Rotate to Install:** Carefully rotate the macro lens onto the clip until it is securely fastened.

# 3-Step Quick Installation

## 1. Open



1. Open the clip and install it on your phone.

## 2. Align



2. Align the macro lens threads with the cell phone clip threads

## 3. Rotate



3. Rotate the lens to install.

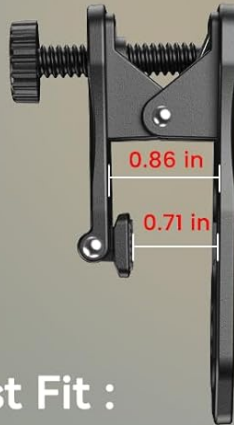
Image: Visual guide for the 3-step quick installation process.

The longest distance from the clip's top to the lens's center is up to 1.38 inches (3.5 cm), making it compatible with nearly all smartphones, including iPhone, Samsung Galaxy and Note, Google Pixel, Huawei, OnePlus, and more. For best fit, measure your device thickness before ordering if unsure.

# Widely Compatible

Compatible with almost all phones, Paired with locking bolts, ensures smooth alignment of lens, preventing any shifting.

## Universal Clip Compatibility



## For Best Fit :

- \* Phone camera should be flat (use case if needed)
- \* Measure your device thickness before ordering
- \* Contact us for free clip replacement if incompatible

Image: Universal clip compatibility and dimensions for various smartphone models.

## 4. OPERATING INSTRUCTIONS

Once the lens is securely attached, open your smartphone's camera application. The APEXEL Macro Lens provides 10X magnification, allowing you to capture sharp details of small subjects.

### Optimal Working Distance

The optimum working distance between the lens and the observed object is approximately 1.5-2.7 inches (4-7 cm). This lens is specifically designed for close-up photography and is not intended for zooming in on distant subjects.



Image: Optimal working distance for macro photography.

## Capturing Macro Shots

Position your phone with the attached macro lens within the optimal working distance of your subject. The lens's large aperture (F1.8) contributes to outstanding bokeh backgrounds, making your subject stand out with a natural, soft blur.

# 10X Macro Magnification

You can capture more sharp details.

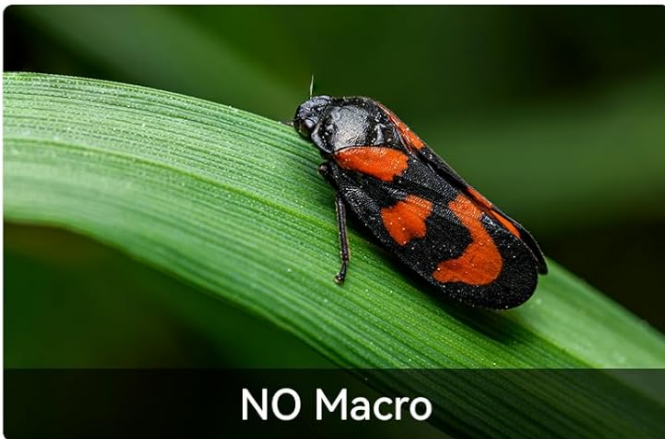


Image: Comparison of a subject without and with 10X macro magnification.

# Macro Phone Lens

Suitable for a wide variety of scenes and objects.



Image: Examples of subjects suitable for macro photography with the lens.

## Smartphone Camera Settings

For certain smartphone models, especially newer ones, you may need to adjust camera settings to ensure proper macro functionality and avoid automatic focus enhancements that can interfere with the lens.

- **For iPhone 13 and newer:** Go to Settings > Camera. Turn off 'Macro Control' on the camera screen and ensure you are using the main camera.
- **For Samsung Galaxy S22/S23 Ultra:** Open the camera app and tap the close-up focus enhancement icon. Disable this function if it is illuminated yellow.

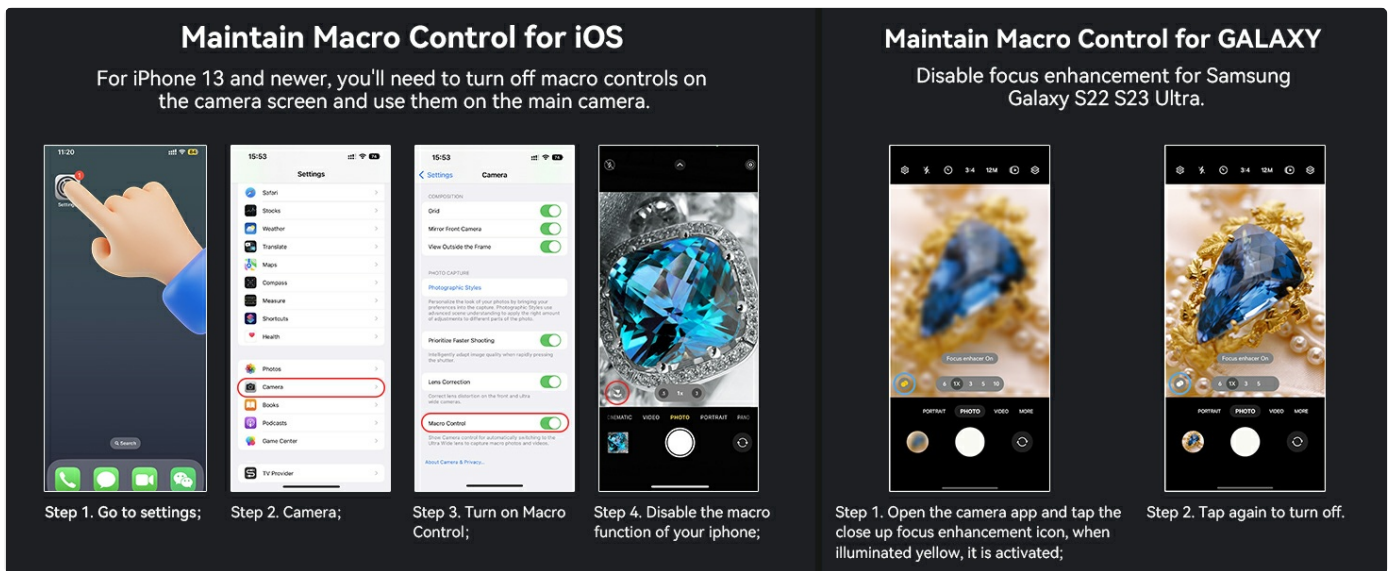


Image: Adjusting macro control settings on iOS and Samsung Galaxy phones.

## 5. MAINTENANCE AND CARE

Proper care will extend the life and performance of your APEXEL Macro Lens:

- **Cleaning the Lens:** Use the provided cleaning cloth to gently wipe the lens surfaces. **DO NOT** clean the lens with alcohol or harsh chemicals, as this may damage the protective coating on the lens.
- **Storage:** When not in use, store the lens in the waterproof storage bag to protect it from dust, moisture, and scratches.
- **Handling:** Handle the lens and clip with care to prevent damage. Avoid dropping the lens or applying excessive force to the clip.

## 6. TROUBLESHOOTING

If you encounter issues while using your APEXEL Macro Lens, refer to the following common problems and solutions:

Problem	Possible Cause	Solution
Black ring or dark corners in photos	Lens not perfectly aligned with phone camera; phone case interfering; phone's internal macro mode active.	Ensure the lens is centered over your phone's main camera. Remove your phone case if it obstructs the lens. Disable any automatic macro or focus enhancement settings on your phone (refer to Section 4).
Lens feels loose or falls off the clip	Lens not securely screwed onto the clip; clip not firmly attached to the phone; elastic/grip wear over time.	Ensure the lens is fully rotated and tightened onto the clip. Verify the clip is securely positioned on your phone. If the clip's grip has weakened, contact APEXEL support for assistance.
Cannot achieve focus	Subject is outside the optimal working distance (1.5-2.7 inches / 4-7 cm); phone's auto-focus interfering.	Adjust the distance between the lens and the subject until it is within the optimal range. Ensure any phone-specific macro or focus enhancement settings are disabled.
Lens does not fit my phone model	Phone camera module or thickness is incompatible with the universal clip.	While designed for wide compatibility, some specific phone models (e.g., iPhone 12 Pro with certain camera layouts) may have fit issues. Contact APEXEL support for free clip replacement if incompatible.

## 7. SPECIFICATIONS

Feature	Detail
Product Dimensions	1.57 x 3.94 x 3.94 inches
Item Weight	4.2 ounces
Model Number	HB100MM
Brand	APEXEL
Lens Type	Macro Lens
Focal Length Description	F1.8
Compatible Mountings	ALL iPhone models, Samsung Galaxy and Note, Google Pixel, Huawei, and more
Date First Available	June 26, 2019

## 8. WARRANTY AND SUPPORT

APEXEL stands behind the quality of its products. If you have any questions, concerns, or require assistance with your APEXEL Macro Lens, please do not hesitate to contact us. Our customer support team is available to help with product inquiries, troubleshooting, and warranty claims.

Please refer to the contact information provided on the product packaging or the official APEXEL website for the most up-to-date support channels.