

## T95 T95

# T95 Android TV Box User Manual

Model: T95

## INTRODUCTION

Thank you for choosing the T95 Android TV Box. This manual provides essential information for setting up, operating, and maintaining your device. Please read it carefully before use to ensure optimal performance and safety.



The T95 Android TV Box is designed to enrich your television experience with smart features.

## SAFETY INFORMATION

- Do not expose the device to water or moisture.
- Avoid placing the device near heat sources or in direct sunlight.
- Use only the provided power adapter.
- Do not attempt to disassemble or repair the device yourself. Contact qualified service personnel.
- Keep out of reach of children.

## PACKAGE CONTENTS

Please check the box for the following items:

- T95 Android TV Box (16GB)
- IR Remote Control
- HDMI Cable
- US Power Adapter
- User Manual



The T95 Android TV Box and its included remote control.

## PRODUCT OVERVIEW

---

The T95 Android TV Box is a compact device designed to bring smart TV capabilities to your display. It features various ports for connectivity and expansion.

# Plug and Play



Diagram illustrating the various ports and connections on the T95 Android TV Box, including AV, Network, HDMI, Power, USB 2.0, and TF Card slot.

## Key Components:

- **HDMI Port:** Connects to your TV or display for high-definition video and audio output.
- **USB 2.0 Ports:** For connecting external devices such as USB drives, keyboards, or mice.
- **TF Card Slot:** For expanding storage with a TF (MicroSD) card.
- **Ethernet Port (RJ45):** For wired network connection.
- **AV Port:** For connecting to older TVs using an AV cable (not included).
- **DC 5V/2A Power Input:** For connecting the power adapter.



# Allwinner H616

Strong performance, providing you with the best experience

**H616**  
Chip

**Cortex-A53**  
CPU

**Mali-G31**  
GPU



The T95 TV Box is powered by the Allwinner H616 quad-core Cortex-A53 CPU and Mali-G31 GPU for strong performance.

## SETUP

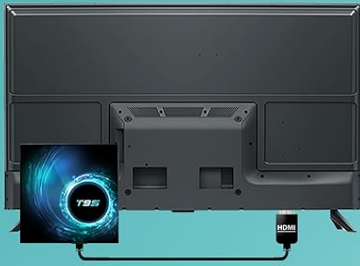
---

Follow these steps to set up your T95 Android TV Box:

1. **Connect the HDMI Cable:** Plug one end of the HDMI cable into the HDMI port on the TV Box and the other end into an available HDMI input on your TV.
2. **Connect the Power Adapter:** Plug the US power adapter into the DC 5V/2A port on the TV Box, then plug the adapter into a power outlet.
3. **Power On:** The device should automatically power on. If not, press the power button on the remote control.
4. **Select Input:** On your TV, select the correct HDMI input source using your TV's remote control.
5. **Network Connection:**
  - **Wi-Fi:** Navigate to Settings > Network > Wi-Fi, select your network, and enter the password.

- **Ethernet:** Connect an Ethernet cable from your router to the RJ45 port on the TV Box. The connection should be automatic.

## Easy to Set Up and Use



1. Connect the HDMI cable.



2. Connect the power adapter.



3. Connect to Wi-Fi or Ethernet.

Visual guide for connecting the HDMI cable, power adapter, and network to the T95 Android TV Box.

## OPERATING

### Android 10.0 OS Navigation:

The T95 TV Box runs on a stable Android 10.0 operating system. Use the included IR remote control to navigate the interface.

- **Directional Pad (D-Pad):** Use the arrow keys to move between icons and options.
- **OK Button:** Confirms selections.
- **Back Button:** Returns to the previous screen.
- **Home Button:** Returns to the main home screen.
- **Menu Button:** Accesses context-sensitive menus.

# Android 10.0 OS

Easy to use / Support more apps



The Android 10.0 OS interface, showing various applications and navigation elements.

## App Installation and Management:

Access the Play Store to download and install a wide variety of applications. You can also install apps from third-party sources.

- **Install Apps:** Open the Play Store app, search for your desired application, and select 'Install'.
- **Uninstall Apps:** Go to Settings > Apps, select the app you wish to remove, and choose 'Uninstall'.

## Media Playback and Display:

The T95 TV Box supports stunning 4K and 6K resolution, H.265 HEVC decoding, 3D graphics, and HDR 10 for a superior visual experience.



# 6K Ultra HD Resolution

Experience stunning 6K ultimate HD video for more lifelike images

**6K  
HDR**



1080P



**6K**

Ultra HD

**3D**

Graphics

**H.265**

EHVC

Experience stunning 6K Ultra HD resolution with HDR for lifelike images.

## H.265 Video Decoding



**H.264**

Video freeze



**H.265**

Save 50% bandwidth, video plays smoothly





H.265 video decoding saves bandwidth and ensures smooth video playback compared to H.264.

## Connectivity:

The device supports 2.4G/5G dual-band Wi-Fi, Bluetooth, and 100M Ethernet for versatile connectivity options.



The T95 TV Box supports both 2.4G and 5G Wi-Fi for faster speeds and lower latency, along with Bluetooth for connecting peripherals.

## Screen Sharing:

Cast content from your mobile phone to the TV using Airplay, Miracast, or DLNA protocols.



# Support Screen Sharing

Cast your favourite movies to the TV with your mobile phone.



Airplay



Miracast



DLNA



The T95 TV Box supports screen sharing from mobile devices using Airplay, Miracast, and DLNA.

## MAINTENANCE

---

### Cleaning:

To clean the device, use a soft, dry cloth. Do not use liquid cleaners or aerosols.

### Software Updates:

The T95 TV Box supports OTA (Over-The-Air) wireless upgrades to ensure your device stays current with the latest features and security enhancements.

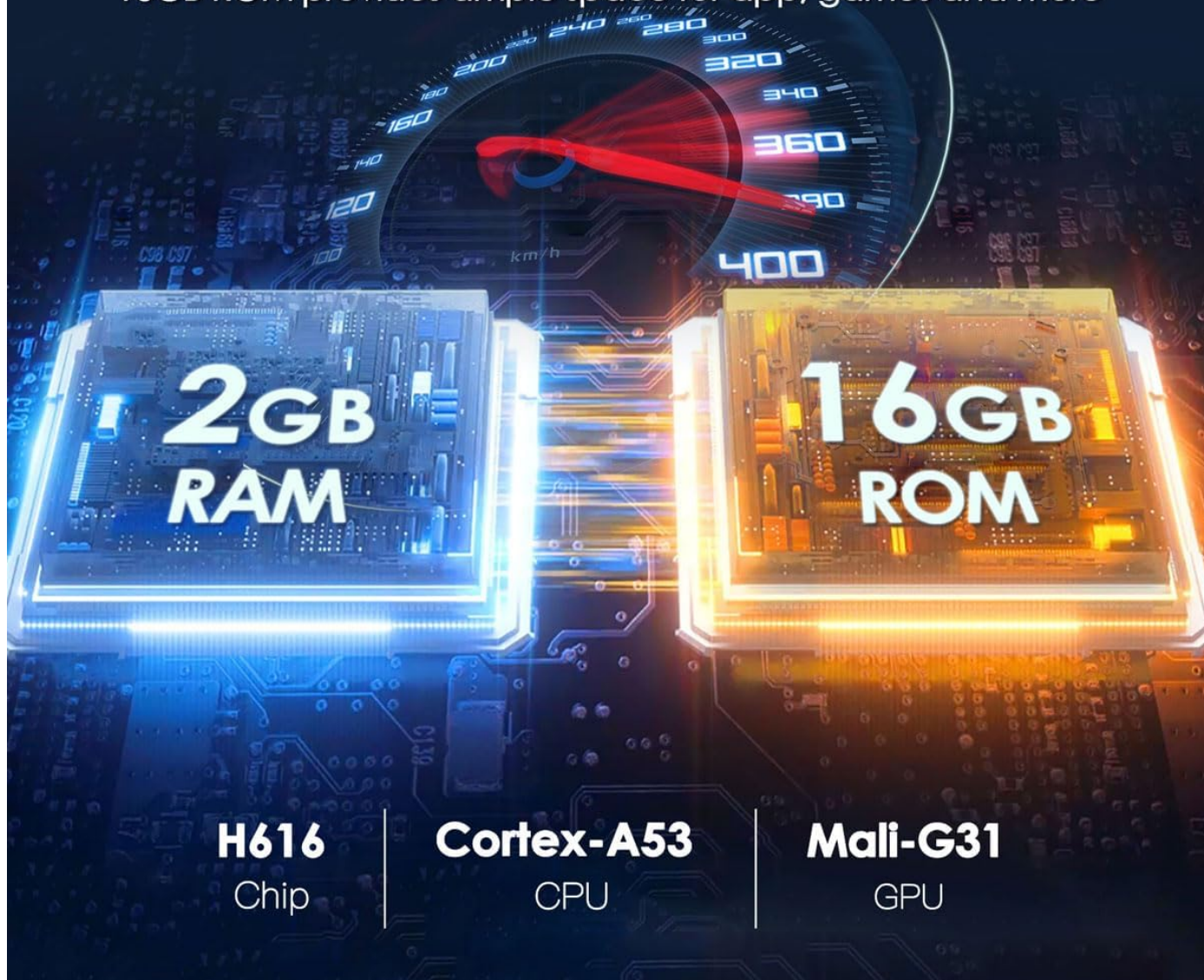
- Go to Settings > About > System Update to check for and install available updates.

### Storage Management:

The device comes with 16GB of internal storage and supports external USB drives up to 1TB and TF cards up to 128GB.

# Large Storage Capacity

2GB RAM storage ensures quick and reliable performance, while 16GB ROM provides ample space for app, games and more



The T95 TV Box features 2GB RAM for fast performance and 16GB ROM for ample storage, expandable via USB and TF card.

## TROUBLESHOOTING

Problem	Possible Cause	Solution
No power	Power adapter not connected or faulty.	Ensure power adapter is securely connected to the device and a working power outlet. Try a different outlet.
No picture on TV	Incorrect HDMI input selected on TV; HDMI cable loose or faulty.	Select the correct HDMI input on your TV. Check HDMI cable connections; try a different HDMI cable or port.
Wi-Fi connection unstable	Weak signal; interference; incorrect password.	Move the TV Box closer to the router. Ensure no obstructions. Re-enter Wi-Fi password. Consider using Ethernet for a more stable connection.



Problem	Possible Cause	Solution
Remote control not working	Batteries low or inserted incorrectly; IR sensor blocked.	Replace batteries. Ensure correct polarity. Clear any obstructions between the remote and the TV Box.
Apps crashing or slow performance	Too many apps running; insufficient storage; outdated software.	Close background apps. Clear app caches. Free up storage space. Check for system updates.

## SPECIFICATIONS

Feature	Detail
Model	T95
Operating System	Android 10.0
CPU	Allwinner H616 Quad-Core Cortex-A53
RAM	2GB
ROM	16GB
Resolution	Supports 4K, 6K
Video Decoding	H.265 HEVC, 3D, HDR 10
Wi-Fi	2.4G/5G Dual-Band
Ethernet	100M LAN
Bluetooth	Supported
USB Ports	USB 2.0
External Storage	Supports 1TB USB drive, 128GB TF card
Dimensions	3.93 x 3.93 x 0.78 inches
Item Weight	3.52 ounces

## WARRANTY INFORMATION

The T95 Android TV Box comes with a standard manufacturer’s warranty. Please refer to the product packaging or contact your retailer for specific warranty terms and conditions. Keep your purchase receipt as proof of purchase.

## SUPPORT

For technical support or further assistance, please contact the seller or refer to the official T95 brand store on Amazon:  
[Visit the T95 Store on Amazon](#)

