

[Manuals.plus](#) /

› [Bestway](#) /

› Bestway Power Steel Rectangular Pool 4.88m x 2.44m x 1.22m Instruction Manual

Bestway 1056996GSX20

Bestway Power Steel Rectangular Pool Instruction Manual

Model: 1056996GSX20

SAFETY INFORMATION

WARNING! READ THE INSTRUCTION MANUAL CAREFULLY AND RETAIN IT FOR FUTURE REFERENCE.

Failure to follow these warnings and instructions can result in serious injury or death to users, especially children. Always ensure proper adult supervision. Never allow diving or jumping into the pool. Keep children under constant supervision in and around the pool. Ensure the pool is installed on a level surface and away from electrical outlets or power sources. Always use the safety ladder for entry and exit.

PRODUCT OVERVIEW

This manual provides instructions for the Bestway Power Steel Rectangular Pool, model 1056996GSX20, with dimensions 4.88m x 2.44m x 1.22m.



Image: The Bestway Power Steel Rectangular Pool, fully assembled and filled with water, showing people enjoying it. The pool features a grey rattan-style exterior and a sturdy metal frame.

Included Components:

- Pool liner
- Reinforced steel frame with Seal & Lock System™
- Filter pump (220-240V~, 800 gal pump flow rate, 580 gal integrated system flow rate)
- Safety ladder
- Pool cover
- Filter cartridge (Type II)
- ChemConnect™ dispenser
- Underwater adhesive repair patch



Image: An exploded view showing the main components of the Bestway Power Steel Rectangular Pool, including the pool liner, frame parts, filter pump, ladder, cover, and ChemConnect dispenser.



Image: A grey Bestway pool safety ladder, designed for secure entry and exit from the pool.

SETUP INSTRUCTIONS

Site Preparation:

Choose a flat, level surface free of debris, sharp objects, or uneven ground. Ensure the ground is firm enough to support the weight of the filled pool (approximately 11,532 liters or 3,046 gallons). Avoid placing the pool under overhead power lines, near structures that could fall onto it, or on slopes.

Assembly:

1. Unpack all components and verify against the parts list provided in the full manual.
2. Lay out the pool liner on the prepared site, ensuring it is smooth and free of wrinkles.
3. Assemble the steel frame according to the diagrams in the full manual, ensuring all connections are secure using the Seal & Lock System™.
4. Attach the filter pump and ChemConnect™ dispenser to the designated ports on the pool liner. Refer to their individual manuals for specific connection details.
5. Install the safety ladder outside the pool, ensuring it is stable and securely placed.



Image: A technical diagram illustrating the dimensions and structure of the Bestway Power Steel Rectangular Pool, including height, length, and width measurements for proper setup.

OPERATING THE POOL

Filling the Pool:

Slowly fill the pool with water, ensuring the liner settles correctly and evenly. Stop filling when the water level reaches the recommended height, typically just below the top frame rail (90% capacity).

Filter Pump Operation:

The filter pump is essential for maintaining water clarity and hygiene. Operate the pump for several hours daily, as recommended in the pump's specific manual, to ensure proper water circulation and filtration. Always ensure the filter cartridge is clean before operation.

56996

↔ 488 X 244 X 122cm
16' X 8" X 48"

TM POWER STEEL™

🏋️ 94,22kg
207,72lb

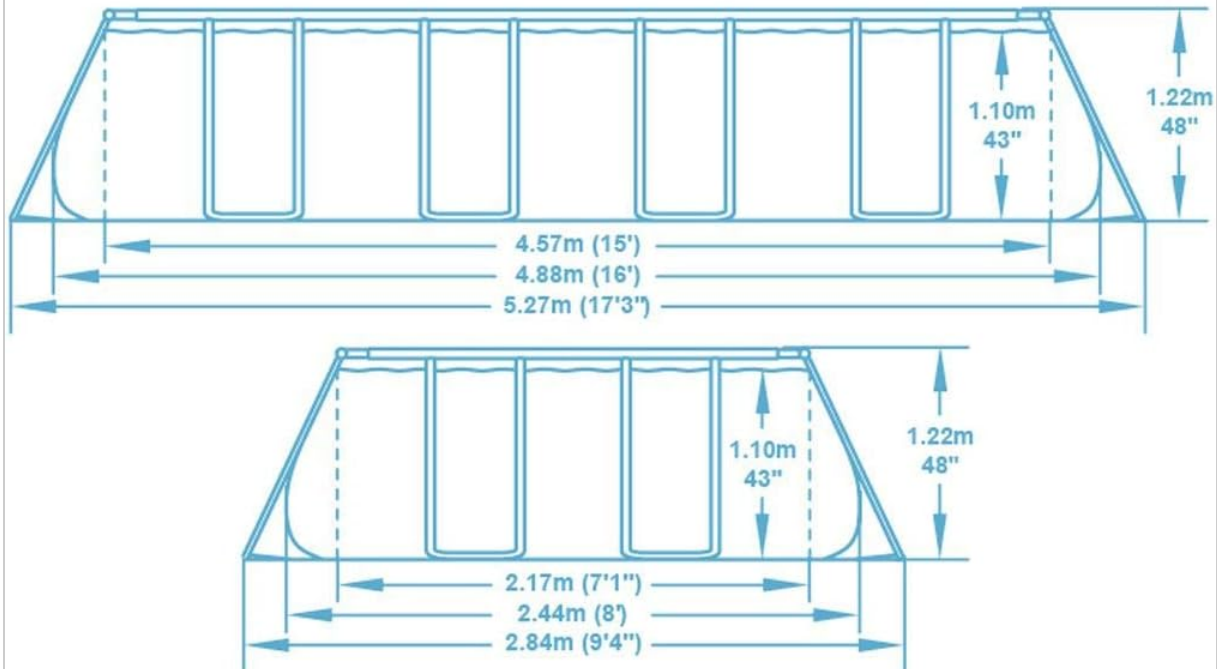


Image: A close-up of the Bestway filter pump, showing its grey housing and connection hoses. This pump is responsible for circulating and filtering pool water.

ChemConnect™ Dispenser:

Use the ChemConnect™ dispenser to distribute pool chemicals (e.g., chlorine tablets) evenly into the water. Follow chemical manufacturer instructions for dosage and safe handling. Do not add chemicals directly to the pool without proper dilution or dispensing methods.



Image: A detailed view of the Bestway ChemConnect dispenser, a blue and white device designed to release pool chemicals into the water.

MAINTENANCE

Water Quality:

Regularly test pool water pH and chlorine levels using a test kit. Adjust chemicals as needed to maintain safe and clean swimming conditions. Ideal pH range is 7.2-7.6, and free chlorine should be 1-3 ppm.

Filter Cartridge Cleaning/Replacement:

Clean the filter cartridge frequently (daily or every other day depending on usage) by rinsing it with a garden hose. Replace the cartridge every two weeks or sooner if heavily soiled or if water flow is significantly reduced.



Image: A Bestway Type II filter cartridge, a pleated paper filter designed to trap debris from pool water.

Pool Cover:

Use the provided pool cover when the pool is not in use to prevent debris (leaves, insects) from entering the water and to reduce water evaporation, helping to maintain water temperature and chemical balance.

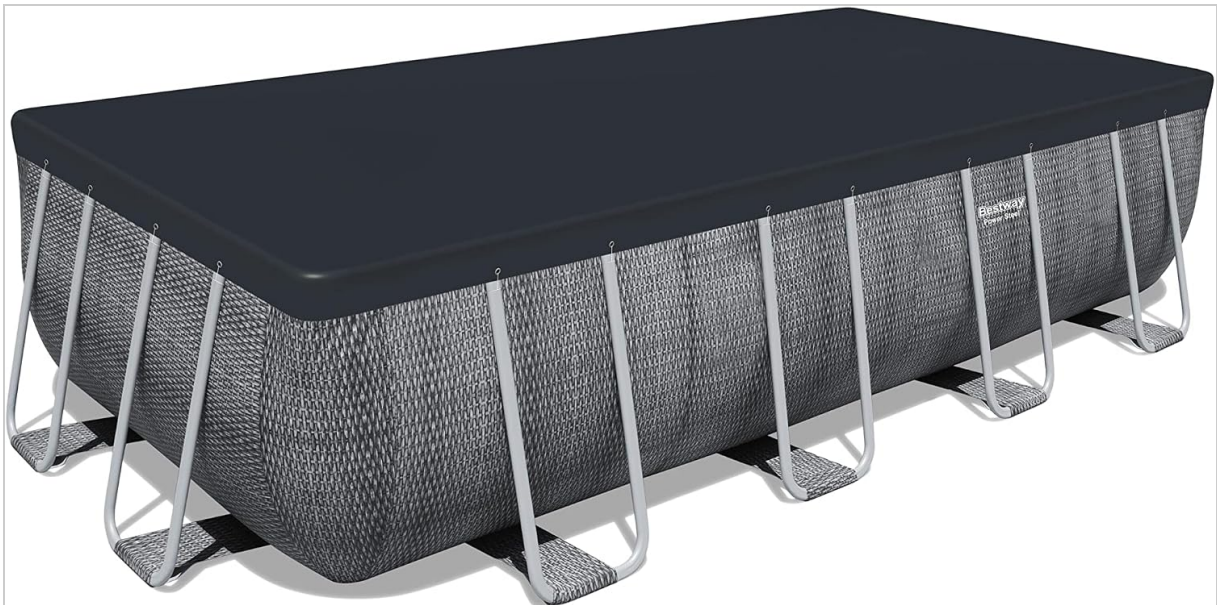


Image: The Bestway Power Steel Rectangular Pool covered with its dark grey protective cover, demonstrating its use for keeping the pool clean when not in use.

Winterization:

Before winter or periods of non-use, completely drain the pool. Clean all components thoroughly, dry them, and store them in a dry, protected area away from freezing temperatures to prevent damage and extend product life.

TROUBLESHOOTING

Common Issues:

- **Cloudy Water:** This often indicates poor filtration or chemical imbalance. Check filter pump operation, clean or replace the filter cartridge, and test/adjust chemical levels (chlorine, pH).
- **Water Leakage:** Inspect the pool liner for punctures. Use the provided underwater adhesive repair patch for small holes. Ensure all hose connections to the pump and pool are tight and sealed.
- **Pump Not Working:** Check the power connection and ensure the circuit breaker has not tripped. Verify there are no blockages in the hoses or the pump's impeller. Refer to the filter pump manual for specific troubleshooting steps.

For persistent issues not resolved by these steps, consult the full product manual or contact Bestway customer support.

SPECIFICATIONS

Feature	Detail
Model Number	1056996GSX20
Dimensions (L x W x H)	4.88m x 2.44m x 1.22m (16 ft x 8 ft x 48 in)
Water Capacity (90%)	11,532 Liters (3,046 gallons)
Material	Tritech™ (3-ply reinforced PVC and polyester mesh), Corrosion-resistant Steel Alloy Frame
Filter Pump Flow Rate	800 gal/hr (3,028 L/hr)
Integrated System Flow Rate	580 gal/hr (2,195 L/hr)
Filter Cartridge Type	Type II
Special Features	Seal & Lock System™, ChemConnect™ Dispenser
Weight	84.88 kg (187.13 lbs)



Image: A diagram detailing the dimensions, water capacity (11,532 liters or 3,046 gallons at 90% fill), and weight of the Bestway Power Steel Rectangular Pool.

WARRANTY AND SUPPORT

For warranty information, please refer to the documentation included with your product or visit the official Bestway website. Keep your proof of purchase, such as the receipt, for any warranty claims.

For technical support, replacement parts, or further assistance, contact Bestway customer service. Contact details can typically be found on the Bestway website or in the original product packaging.

Bestway Official Website: www.bestwaycorp.com