

## Neuro NS15NAS

# Neuro by Paul Mitchell Smooth Titanium Flat Iron NS15NAS User Manual

## INTRODUCTION

---

Thank you for choosing the Neuro by Paul Mitchell Smooth Titanium Flat Iron. This digital high-performance hair straightener is designed to smooth and straighten hair, create flips, and make waves with ease. Featuring advanced titanium plates and adjustable heat settings, it provides versatile styling options for various hair types. This manual provides essential information for safe and effective use, maintenance, and troubleshooting.

## IMPORTANT SAFETY INSTRUCTIONS

---

When using electrical appliances, especially when children are present, basic safety precautions should always be followed, including the following:

- **DANGER:** Keep away from water. As with most electrical appliances, electrical parts are electrically live even when the switch is off.
- Always unplug the appliance immediately after use.
- Do not use while bathing or in a shower.
- Do not place or store appliance where it can fall or be pulled into a tub or sink.
- Do not place in or drop into water or other liquid.
- If an appliance falls into water, unplug it immediately. Do not reach into the water.
- **WARNING:** To reduce the risk of burns, electrocution, fire, or injury to persons:
  - An appliance should never be left unattended when plugged in.
  - Close supervision is necessary when this appliance is used by, on, or near children or individuals with certain disabilities.
  - Use this appliance only for its intended use as described in this manual. Do not use attachments not recommended by the manufacturer.
  - Never operate this appliance if it has a damaged cord or plug, if it is not working properly, or if it has been dropped, damaged, or dropped into water.
  - Keep the cord away from heated surfaces. Do not wrap the cord around the appliance.

- Never use while sleeping.
- Never drop or insert any object into any opening.
- Do not use outdoors or operate where aerosol (spray) products are being used or where oxygen is being administered.
- Do not use an extension cord with this appliance.
- This appliance is hot when in use. Do not let eyes or bare skin touch heated surfaces.
- Do not place the heated appliance directly on any surface while it is operating or cooling.

## SETUP GUIDE

---

Follow these steps to prepare your flat iron for use:

1. **Unpack:** Carefully remove the flat iron and all packaging materials from the box.
2. **Inspect:** Check the appliance for any signs of damage. If damaged, do not use and contact customer support.
3. **Plug In:** Insert the power cord into a standard electrical outlet. Ensure the outlet voltage matches the appliance's requirements.



*A top-down view of the Neuro by Paul Mitchell Smooth Titanium Flat Iron, showcasing its sleek black design and digital temperature display.*

## OPERATING INSTRUCTIONS

---

Ensure your hair is clean, dry, and free of tangles before styling. For best results, apply a heat protectant.

## Power On/Off

- To turn on, press and hold the power button until the digital display illuminates.
- To turn off, press and hold the power button again until the display turns off.

## Adjusting Temperature

The Neuro Smooth Titanium Flat Iron features adjustable heat settings up to 450°F (232°C). Use the '+' and '-' buttons to increase or decrease the temperature to suit your hair type and desired style. Lower temperatures are recommended for fine or damaged hair, while higher temperatures are suitable for thick or coarse hair.



*A detailed view of the flat iron's digital display showing '450°F', indicating its adjustable heat settings for various hair types.*

## Straightening Hair

1. Section your hair into manageable portions, approximately 1-2 inches wide.
2. Place a section of hair between the titanium plates, close to the roots.
3. Hold the iron horizontally and gently glide it down the hair section from roots to ends in one smooth, continuous motion. Avoid stopping or holding the iron in one place for too long to prevent heat damage.
4. Repeat on all sections until desired straightness is achieved.

## ISOTHERM TITANIUM PLATES

For shiny,  
frizz-free results



*Close-up view of the Neuro Smooth Flat Iron highlighting the IsoTherm titanium plates, designed for shiny, frizz-free results.*

### **Creating Curls or Waves**

1. Section your hair as you would for straightening.
2. For curls, place a section of hair between the plates, close to the roots.
3. Rotate the iron 180 degrees away from your face, then gently glide it down the hair section to the ends. The speed of the glide will determine the tightness of the curl.
4. For waves, use a similar technique but with a slightly looser rotation and faster glide.
5. Repeat on all sections.



*A hand holding the Neuro Smooth Flat Iron, illustrating its slim design which allows for styling close to the roots and hairline.*

## CARE AND MAINTENANCE

---

Proper care ensures the longevity and performance of your flat iron.

- **Cleaning:** Always unplug the appliance and allow it to cool completely before cleaning. Wipe the exterior and titanium plates with a soft, damp cloth. Do not use abrasive cleaners or immerse the appliance in water.
- **Storage:** Store the flat iron in a cool, dry place, away from moisture. Do not wrap the cord around the appliance, as this can damage the cord.

## TROUBLESHOOTING

---

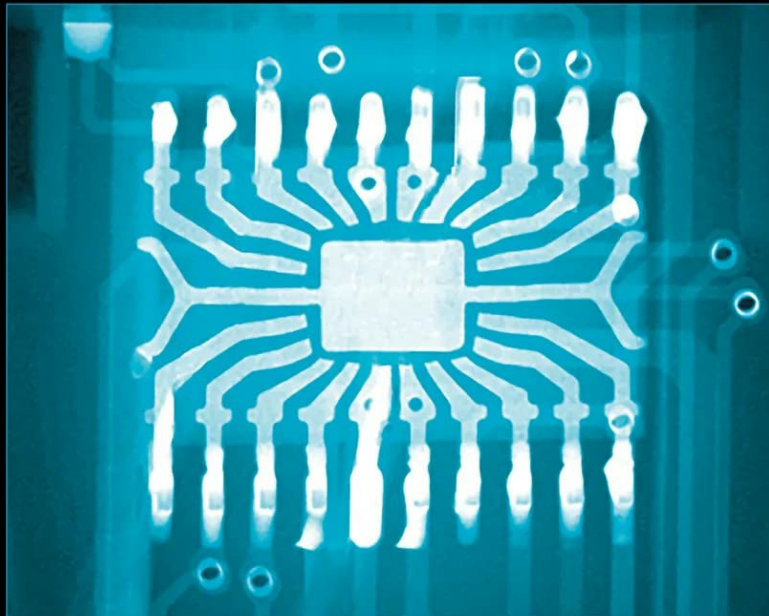
If you encounter issues with your Neuro Smooth Titanium Flat Iron, refer to the following table:

Problem	Possible Cause	Solution
Flat iron does not turn on.	No power supply.	Ensure the power cord is securely plugged into a working electrical outlet. Check the circuit breaker.
Flat iron heats up slowly or not at all.	Power issue or internal malfunction.	Verify power connection. If the issue persists, discontinue use and contact customer support.

Problem	Possible Cause	Solution
Hair is not straightening effectively.	Incorrect temperature setting, hair not dry, or sections too large.	Increase temperature if suitable for your hair type. Ensure hair is completely dry. Work with smaller, thinner sections of hair.
Hair gets snagged or pulled.	Hair not detangled, or plates not clean.	Ensure hair is thoroughly detangled before use. Clean the plates as per maintenance instructions.

## PRODUCT SPECIFICATIONS

- **Model Number:** NS15NAS
- **Brand:** Neuro by Paul Mitchell
- **Plate Material:** Titanium
- **Plate Size:** 1.5 inches (IsoTherm titanium plates)
- **Adjustable Heat:** Up to 450°F (232°C)
- **Color:** Black
- **Product Dimensions:** 10.97 x 1.72 x 1.44 inches
- **Weight:** 15.66 ounces
- **Manufacturer:** John Paul Mitchell Systems
- **UPC:** 009531140810, 009531129884



### THE TECHNOLOGY

SmartSense microchip delivers optimal, even heat for fast smoothing

*An X-ray style image revealing the internal SmartSense microchip technology, which ensures optimal and even heat distribution for fast smoothing.*

## **WARRANTY AND CUSTOMER SUPPORT**

---

This product is manufactured by John Paul Mitchell Systems. For specific warranty information, please refer to the warranty card included with your purchase or visit the official Paul Mitchell website. Keep your proof of purchase for warranty claims.

For technical assistance, troubleshooting beyond this manual, or to inquire about warranty service, please contact John Paul Mitchell Systems customer support directly. Contact details can typically be found on the product packaging or the manufacturer's official website.